

NOT OFFICIAL  
SEE ORIGINAL IN RECORDER'S  
OFFICE

2021-017133

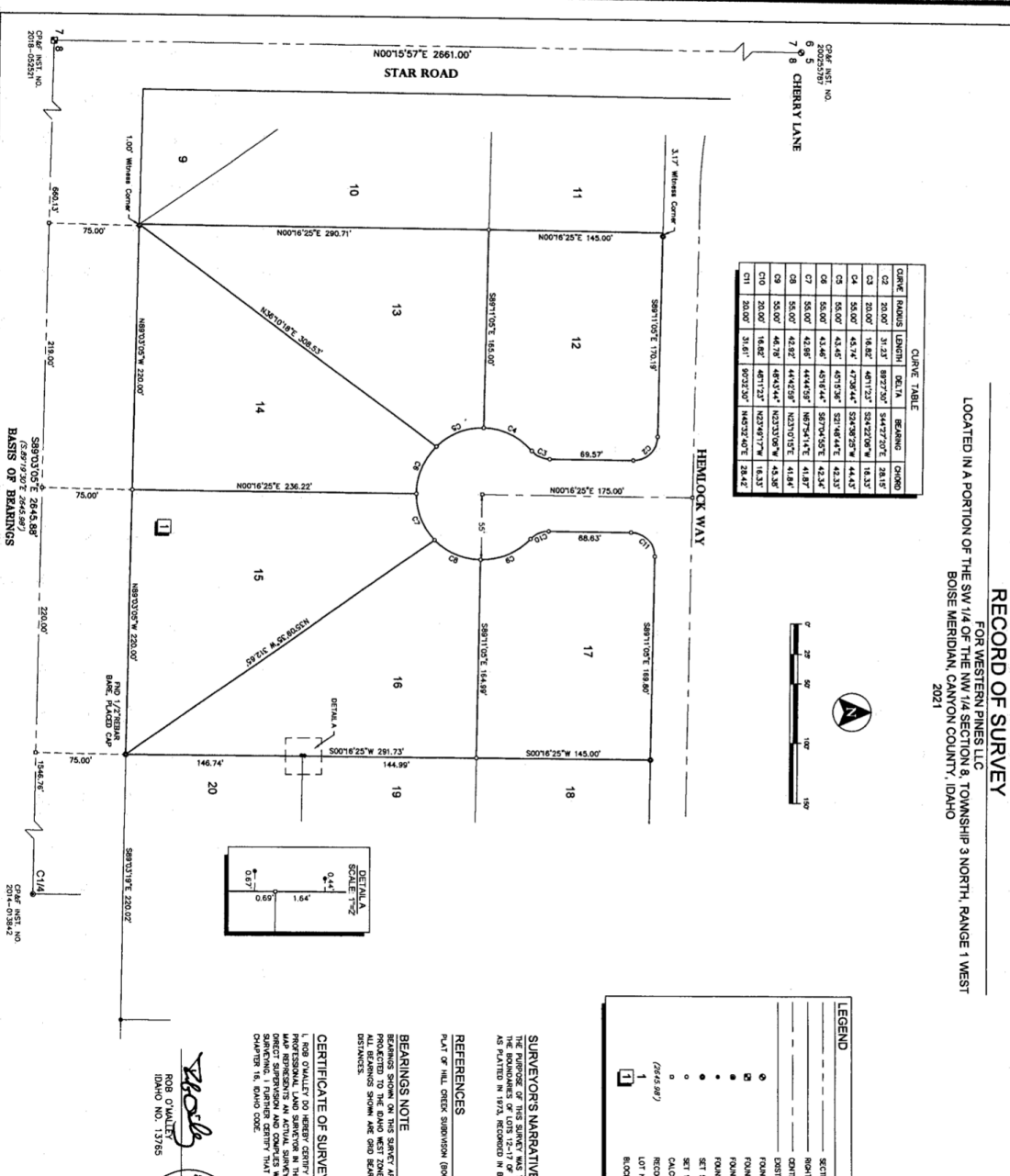
RECORDED

03/09/2021 03:42 PM



00594431202100171330010016

CHRIS YAMAMOTO  
CANYON COUNTY RECORDER  
Pgs=1 SCARDENAS \$5.00  
SURVEY  
T-O ENGINEERS



CURVE TABLE

CHORD RADIUS	LENGTH	DELTA	BEARING	CHORD	
02	20.00'	31.32'	89.72°	54.07°	38.16'
03	20.00'	16.82'	49.12°	54.07°	19.08'
04	20.00'	14.32'	42.94°	54.07°	16.35'
05	20.00'	12.42'	37.82°	54.07°	14.42'
06	20.00'	11.02'	33.42°	54.07°	12.92'
07	20.00'	10.02'	29.62°	54.07°	11.82'
08	20.00'	9.32'	26.32°	54.07°	11.02'
09	20.00'	8.82'	23.42°	54.07°	10.42'
10	20.00'	8.42'	20.92°	54.07°	9.92'
11	20.00'	8.12'	18.72°	54.07°	9.52'
12	20.00'	7.92'	16.72°	54.07°	9.22'
13	20.00'	7.72'	14.92°	54.07°	8.92'
14	20.00'	7.62'	13.32°	54.07°	8.72'
15	20.00'	7.52'	11.92°	54.07°	8.52'
16	20.00'	7.42'	10.62°	54.07°	8.42'
17	20.00'	7.32'	9.42°	54.07°	8.32'
18	20.00'	7.22'	8.32°	54.07°	8.22'
19	20.00'	7.12'	7.32°	54.07°	8.12'
20	20.00'	7.02'	6.42°	54.07°	8.02'

RECORD OF SURVEY  
FOR WESTERN PINES LLC  
LOCATED IN A PORTION OF THE SW 1/4 OF THE NW 1/4 SECTION 8, TOWNSHIP 3 NORTH, RANGE 1 WEST  
BOISE MERIDIAN, CANYON COUNTY, IDAHO  
2021



LEGEND

- SECTION
- BOUNDARY
- CURVE CENTER
- CURVE POINT
- CURVE END
- SET 1
- CALC.
- RECORD
- LOT N
- BLOCK

**SURVEYOR'S NARRATIVE**  
THE PURPOSE OF THIS SURVEY WAS TO DIVIDE THE BOUNDARIES OF LOTS 15-17 OF A 1/4 SECTION IN 1976 RECORDED IN B.L. 15802.

**REFERENCES**  
PLAT OF HILL CREEK SUBDIVISION (89C)

**BEARINGS NOTE**  
BEARINGS SHOWN ON THIS SURVEY ARE BASED ON THE BEARING AND DISTANCE MEASUREMENTS MADE BY THE SURVEYOR.

**CERTIFICATE OF SURVEY**  
I, ROB O'WALLEY DO HEREBY CERTIFY THAT THE ABOVE DESCRIBED SURVEY WAS MADE BY ME OR UNDER MY SUPERVISION AND COMPLIES WITH THE REQUIREMENTS OF CHAPTER 16, D.I.A.M. CODE.

ROB O'WALLEY  
IDAHO NO. 13785

3" LINE  
 20'-HAY LINE / LOT LINE  
 40 LOT LINE  
 1 BRASS CAP MONUMENT  
 1 ALUMINUM CAP MONUMENT  
 1 5/8" IRON ROD  
 1 1/2" IRON ROD  
 /2" REBAR  
 /2" REBAR  
 LATED POINT-MONING SET OR FOUND  
 D DATA  
 NUMBER - HILL CREEK SUBDIVISION  
 NUMBER

D RETIAGE AND MONUMENT  
 HILL CREEK SUBDIVISION  
 MON 12, PAGE 28 OF PLATS

K 12, PAGE 28 OF PLATS

I BASED UPON GPS OBSERVATIONS  
 (110) HILL CREEK SUBDIVISION  
 MON 12, PAGE 28 OF PLATS

OR

THAT I AM A LICENSED  
 SURVEYOR AND THAT THIS  
 MAP WAS PREPARED BY ME  
 OR UNDER MY SUPERVISION  
 AND THAT I AM AWARE OF  
 THE CONSEQUENCES OF  
 THIS STATEMENT.



SURVEY INDEX NO. 314-08-04-03  
**T.O. ENGINEERS**  
 323 N. BRONKHORST HWY  
 MAPLE, OHIO 43061-5123  
 PHONE (614) 442-0000 WWW.TO-ENGINEERS.COM  
**SHEET NO. 1 OF 1**