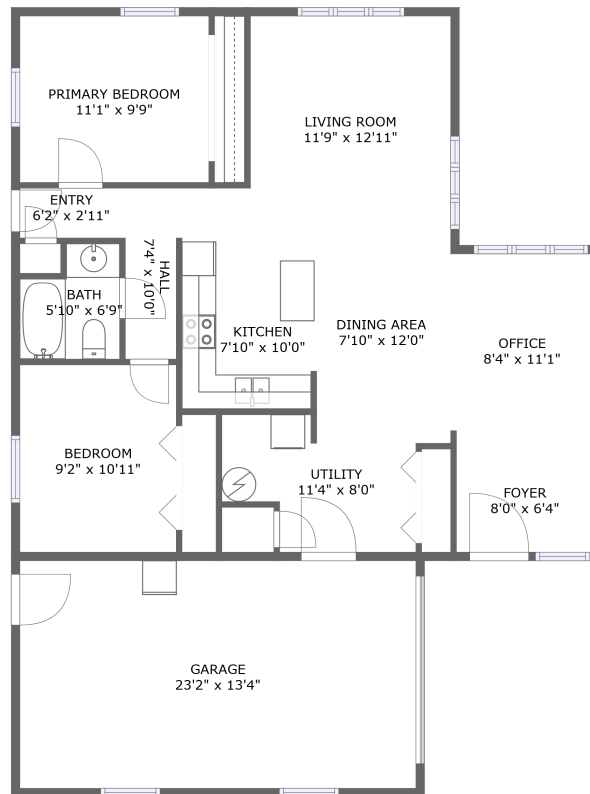



410 Manning St, Hermosa, SD, US




Property Summary


 **1** garages

 **2** bedrooms

 **1** bathrooms

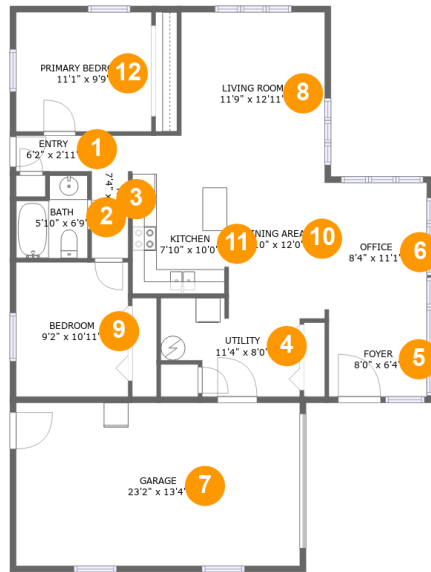
 **0** half baths

 **1** floors

 **1,002** Gross Living Area sqft

 **1,336** total sqft

410 Manning St, Hermosa, SD, US



Room Dimensions

Floor 1

Total sqft: 1336

Living area: 1002

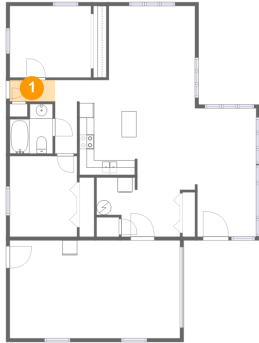
#	Room name	Dimensions	Area (sqft)	Counted as Living Area
1	Entry	6'2" x 2'11"	18 sq. ft	Yes
2	Bath	5'10" x 6'9"	34 sq. ft	Yes
3	Hall	7'4" x 10'0"	42 sq. ft	Yes
4	Utility	11'4" x 8'0"	71 sq. ft	Yes
5	Foyer	8'0" x 6'4"	51 sq. ft	Yes
6	Office	8'4" x 11'1"	92 sq. ft	Yes
7	Garage	23'2" x 13'4"	308 sq. ft	No
8	Living Room	11'9" x 12'11"	152 sq. ft	Yes
9	Bedroom	9'2" x 10'11"	100 sq. ft	Yes
10	Dining Area	7'10" x 12'0"	94 sq. ft	Yes
11	Kitchen	7'10" x 10'0"	78 sq. ft	Yes

410 Manning St, Hermosa, SD, US

#	Room name	Dimensions	Area (sqft)	Counted as Living Area
12	Primary Bedroom	11'1" x 9'9"	108 sq. ft	Yes

410 Manning St, Hermosa, SD, US

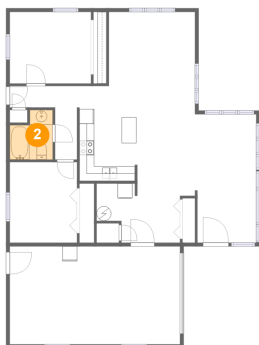
1 Floor 1 - Entry



Dimensions: 6'2" x 2'11"
Area: 18 sq. ft
Counted as Living Area:
Yes

Heated: Yes
Finished: Yes
Enclosed: Yes
Contiguous:
Yes
Permitted: Yes
Wet Space: No
Addition: No
Conversion: No

2 Floor 1 - Bath



Dimensions: 5'10" x 6'9"
Area: 34 sq. ft
Counted as Living Area:
Yes

Heated: Yes
Finished: Yes
Enclosed: Yes
Contiguous:
Yes
Permitted: Yes
Wet Space: Yes
Addition: No
Conversion: No

410 Manning St, Hermosa, SD, US

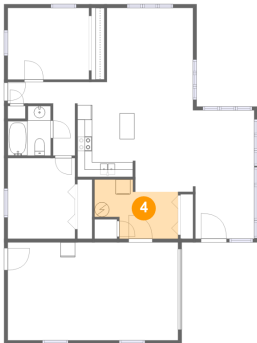
3 Floor 1 - Hall



Dimensions: 7'4" x 10'0"
Area: 42 sq. ft
Counted as Living Area:
Yes

Heated: Yes
Finished: Yes
Enclosed: Yes
Contiguous:
Yes
Permitted: Yes
Wet Space: No
Addition: No
Conversion: No

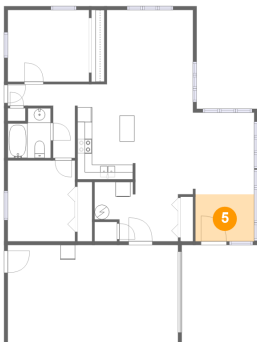
4 Floor 1 - Utility



Dimensions: 11'4" x 8'0"
Area: 71 sq. ft
Counted as Living Area:
Yes

Heated: Yes
Finished: Yes
Enclosed: Yes
Contiguous:
Yes
Permitted: Yes
Wet Space: No
Addition: No
Conversion: No

5 Floor 1 - Foyer

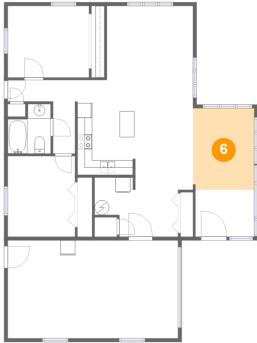


Dimensions: 8'0" x 6'4"
Area: 51 sq. ft
Counted as Living Area:
Yes

Heated: Yes
Finished: Yes
Enclosed: Yes
Contiguous:
Yes
Permitted: Yes
Wet Space: No
Addition: No
Conversion: No

410 Manning St, Hermosa, SD, US

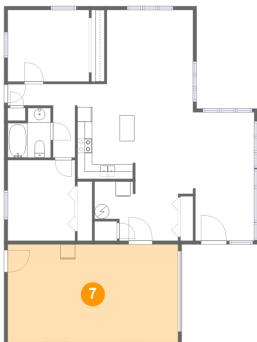
6 Floor 1 - Office



Dimensions: 8'4" x 11'1"
Area: 92 sq. ft
Counted as Living Area:
Yes

Heated: Yes
Finished: Yes
Enclosed: Yes
Contiguous:
Yes
Permitted: Yes
Wet Space: No
Addition: No
Conversion: No

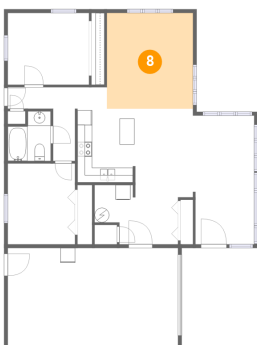
7 Floor 1 - Garage



Dimensions: 23'2" x 13'4"
Area: 308 sq. ft
Counted as Living Area: No

Heated: No
Finished: No
Enclosed: Yes
Contiguous: Yes
Permitted: Yes
Wet Space: No
Addition: No
Conversion: No

8 Floor 1 - Living Room

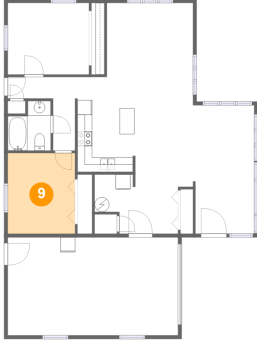


Dimensions: 11'9" x 12'11"
Area: 152 sq. ft
Counted as Living Area:
Yes

Heated: Yes
Finished: Yes
Enclosed: Yes
Contiguous:
Yes
Permitted: Yes
Wet Space: No
Addition: No
Conversion: No

410 Manning St, Hermosa, SD, US

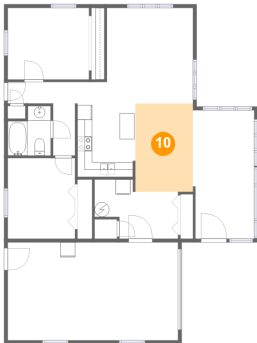
9 Floor 1 - Bedroom



Dimensions: 9'2" x 10'11"
Area: 100 sq. ft
Counted as Living Area:
Yes

Heated: Yes
Finished: Yes
Enclosed: Yes
Contiguous:
Yes
Permitted: Yes
Wet Space: No
Addition: No
Conversion: No

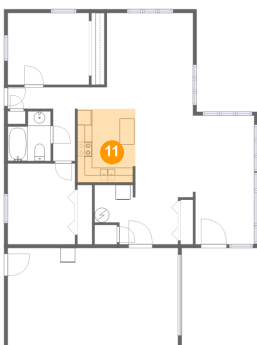
10 Floor 1 - Dining Area



Dimensions: 7'10" x 12'0"
Area: 94 sq. ft
Counted as Living Area:
Yes

Heated: Yes
Finished: Yes
Enclosed: Yes
Contiguous:
Yes
Permitted: Yes
Wet Space: No
Addition: No
Conversion: No

11 Floor 1 - Kitchen

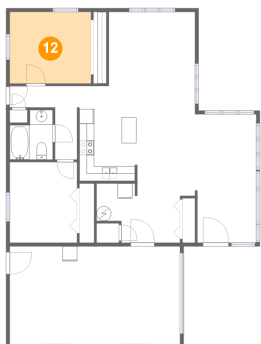


Dimensions: 7'10" x 10'0"
Area: 78 sq. ft
Counted as Living Area:
Yes

Heated: Yes
Finished: Yes
Enclosed: Yes
Contiguous:
Yes
Permitted: Yes
Wet Space: No
Addition: No
Conversion: No

410 Manning St, Hermosa, SD, US

12 Floor 1 - Primary Bedroom



Dimensions: 11'1" x 9'9"
Area: 108 sq. ft
Counted as Living Area:
Yes

Heated: Yes
Finished: Yes
Enclosed: Yes
Contiguous:
Yes
Permitted: Yes
Wet Space: No
Addition: No
Conversion: No