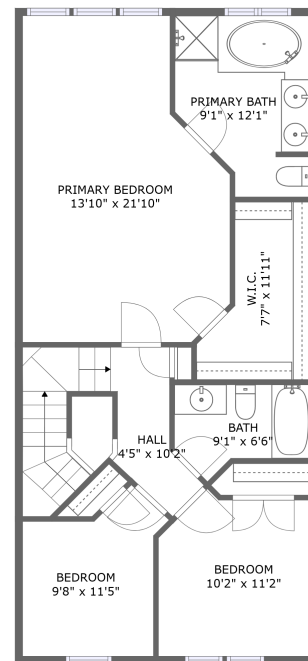
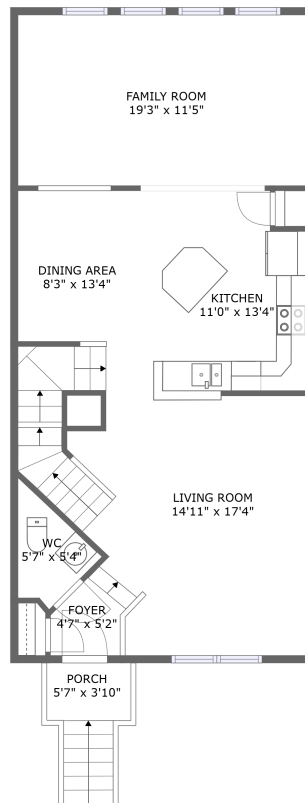
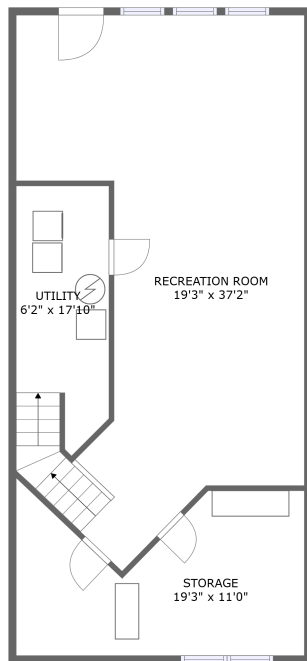


# 27 Baltic Ln, Ranson, WV, US



## Property summary


 **0** Garages

 **3** Bedrooms

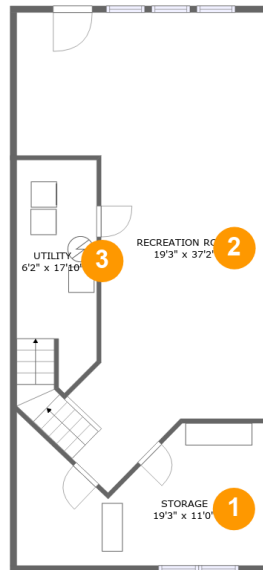
 **2** Bathrooms

 **1** Half baths

 **3** Floors

 **1,742** Gross living area sqft

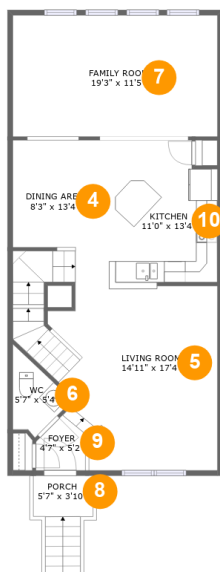
 **2,648** Total sqft

**27 Baltic Ln,Ranson,WV,US****Room dimensions**

Floor 1

Total sqft: 866 Living area: 0

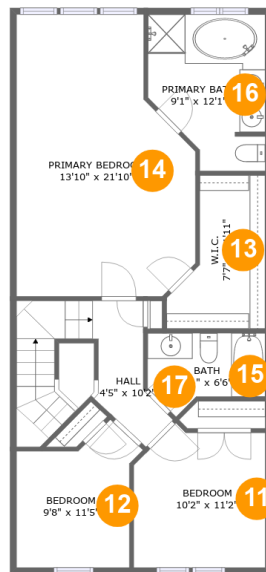
#		Dimensions	sqft	Counted as living area
1	Storage	19'3" x 11'0"	178 sq. ft	No
2	Recreation Room	19'3" x 37'2"	533 sq. ft	No
3	Utility	6'2" x 17'10"	95 sq. ft	No

**27 Baltic Ln, Ranson, WV, US****Room dimensions**

Floor 2

Total sqft: 916 Living area: 876

#		Dimensions	sqft	Counted as living area
4	Dining Area	8'3" x 13'4"	109 sq. ft	Yes
5	Living Room	14'11" x 17'4"	271 sq. ft	Yes
6	WC	5'7" x 5'4"	27 sq. ft	Yes
7	Family Room	19'3" x 11'5"	221 sq. ft	Yes
8	Porch	5'7" x 3'10"	40 sq. ft	No
9	Foyer	4'7" x 5'2"	19 sq. ft	Yes
10	Kitchen	11'0" x 13'4"	144 sq. ft	Yes

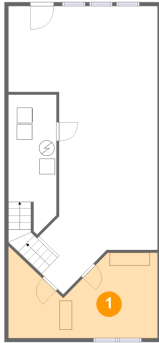
**27 Baltic Ln, Ranson, WV, US****Room dimensions**

Floor 3

Total sqft: 866 Living area: 866

#		Dimensions	sqft	Counted as living area
11	Bedroom	10'2" x 11'2"	104 sq. ft	Yes
12	Bedroom	9'8" x 11'5"	85 sq. ft	Yes
13	W.I.C.	7'7" x 11'11"	70 sq. ft	Yes
14	Primary Bedroom	13'10" x 21'10"	265 sq. ft	Yes
15	Bath	9'1" x 6'6"	47 sq. ft	Yes
16	Primary Bath	9'1" x 12'1"	95 sq. ft	Yes
17	Hall	4'5" x 10'2"	100 sq. ft	Yes

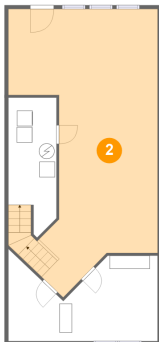
## 1 Floor 1 - Storage



Dimensions: 19'3" x 11'0"  
Area: 178 sq. ft  
Counted as living area: No

Heated: No  
Finished: No  
Enclosed: No  
Contiguous: Yes  
Permitted: Yes  
Wet space: No  
Addition: No  
Conversion: No

## 2 Floor 1 - Recreation Room

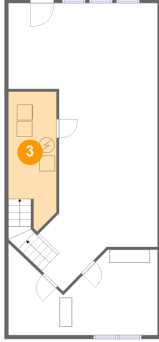


Dimensions: 19'3" x 37'2"  
Area: 533 sq. ft  
Counted as living area: No

Heated: Yes  
Finished: Yes  
Enclosed: Yes  
Contiguous: No  
Permitted: Yes  
Wet space: No  
Addition: No  
Conversion: No

# 27 Baltic Ln, Ranson, WV, US

## 3 Floor 1 - Utility



Dimensions: 6'2" x 17'10"  
Area: 95 sq. ft  
Counted as living area: No

Heated: Yes  
Finished: No  
Enclosed: Yes  
Contiguous: Yes  
Permitted: Yes  
Wet space: No  
Addition: No  
Conversion: No

## 4 Floor 2 - Dining Area



Dimensions: 8'3" x 13'4"  
Area: 109 sq. ft  
Counted as living area: Yes

Heated: Yes  
Finished: Yes  
Enclosed: Yes  
Contiguous: Yes  
Permitted: Yes  
Wet space: No  
Addition: No  
Conversion: No

## 5 Floor 2 - Living Room



Dimensions: 14'11" x 17'4"  
Area: 271 sq. ft  
Counted as living area: Yes

Heated: Yes  
Finished: Yes  
Enclosed: Yes  
Contiguous: Yes  
Permitted: Yes  
Wet space: No  
Addition: No  
Conversion: No

# 27 Baltic Ln, Ranson, WV, US

## 6 Floor 2 - WC



**Dimensions:** 5'7" x 5'4"  
**Area:** 27 sq. ft  
**Counted as living area:** Yes

**Heated:** Yes  
**Finished:** Yes  
**Enclosed:** Yes  
**Contiguous:** Yes  
**Permitted:** Yes  
**Wet space:** Yes  
**Addition:** No  
**Conversion:** No

## 7 Floor 2 - Family Room



**Dimensions:** 19'3" x 11'5"  
**Area:** 221 sq. ft  
**Counted as living area:** Yes

**Heated:** Yes  
**Finished:** Yes  
**Enclosed:** Yes  
**Contiguous:** Yes  
**Permitted:** Yes  
**Wet space:** No  
**Addition:** No  
**Conversion:** No

## 8 Floor 2 - Porch



**Dimensions:** 5'7" x 3'10"  
**Area:** 40 sq. ft  
**Counted as living area:** No

**Heated:** No  
**Finished:** Yes  
**Enclosed:** No  
**Contiguous:** Yes  
**Permitted:** Yes  
**Wet space:** No  
**Addition:** No  
**Conversion:** No

# 27 Baltic Ln, Ranson, WV, US

## 9 Floor 2 - Foyer



Dimensions: 4'7" x 5'2"  
Area: 19 sq. ft  
Counted as living area: Yes

Heated: Yes  
Finished: Yes  
Enclosed: Yes  
Contiguous: Yes  
Permitted: Yes  
Wet space: No  
Addition: No  
Conversion: No

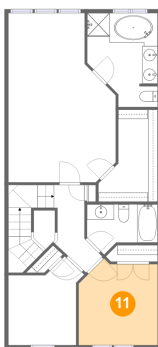
## 10 Floor 2 - Kitchen



Dimensions: 11'0" x 13'4"  
Area: 144 sq. ft  
Counted as living area: Yes

Heated: Yes  
Finished: Yes  
Enclosed: Yes  
Contiguous: Yes  
Permitted: Yes  
Wet space: No  
Addition: No  
Conversion: No

## 11 Floor 3 - Bedroom



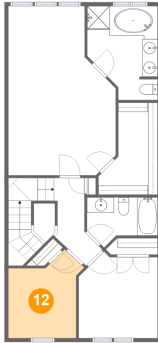
Dimensions: 10'2" x 11'2"  
Area: 104 sq. ft  
Counted as living area: Yes

Heated: Yes  
Finished: Yes  
Enclosed: Yes  
Contiguous: Yes  
Permitted: Yes  
Wet space: No  
Addition: No  
Conversion: No



# 27 Baltic Ln, Ranson, WV, US

## 12 Floor 3 - Bedroom



**Dimensions:** 9'8" x 11'5"  
**Area:** 85 sq. ft  
**Counted as living area:** Yes

**Heated:** Yes  
**Finished:** Yes  
**Enclosed:** Yes  
**Contiguous:** Yes  
**Permitted:** Yes  
**Wet space:** No  
**Addition:** No  
**Conversion:** No

## 13 Floor 3 - W.I.C.



**Dimensions:** 7'7" x 11'11"  
**Area:** 70 sq. ft  
**Counted as living area:** Yes

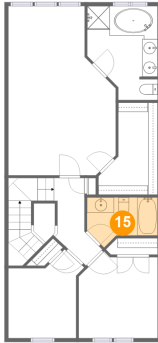
**Heated:** Yes  
**Finished:** Yes  
**Enclosed:** Yes  
**Contiguous:** Yes  
**Permitted:** Yes  
**Wet space:** No  
**Addition:** No  
**Conversion:** No

## 14 Floor 3 - Primary Bedroom



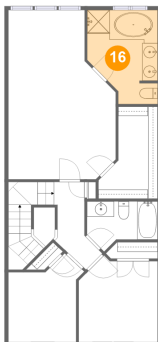
**Dimensions:** 13'10" x 21'10"  
**Area:** 265 sq. ft  
**Counted as living area:** Yes

**Heated:** Yes  
**Finished:** Yes  
**Enclosed:** Yes  
**Contiguous:** Yes  
**Permitted:** Yes  
**Wet space:** No  
**Addition:** No  
**Conversion:** No

**27 Baltic Ln, Ranson, WV, US****15 Floor 3 - Bath**

**Dimensions:** 9'1" x 6'6"  
**Area:** 47 sq. ft  
**Counted as living area:** Yes

**Heated:** Yes  
**Finished:** Yes  
**Enclosed:** Yes  
**Contiguous:** Yes  
**Permitted:** Yes  
**Wet space:** Yes  
**Addition:** No  
**Conversion:** No

**16 Floor 3 - Primary Bath**

**Dimensions:** 9'1" x 12'1"  
**Area:** 95 sq. ft  
**Counted as living area:** Yes

**Heated:** Yes  
**Finished:** Yes  
**Enclosed:** Yes  
**Contiguous:** Yes  
**Permitted:** Yes  
**Wet space:** Yes  
**Addition:** No  
**Conversion:** No

**17 Floor 3 - Hall**

**Dimensions:** 4'5" x 10'2"  
**Area:** 100 sq. ft  
**Counted as living area:** Yes

**Heated:** Yes  
**Finished:** Yes  
**Enclosed:** Yes  
**Contiguous:** Yes  
**Permitted:** Yes  
**Wet space:** No  
**Addition:** No  
**Conversion:** No