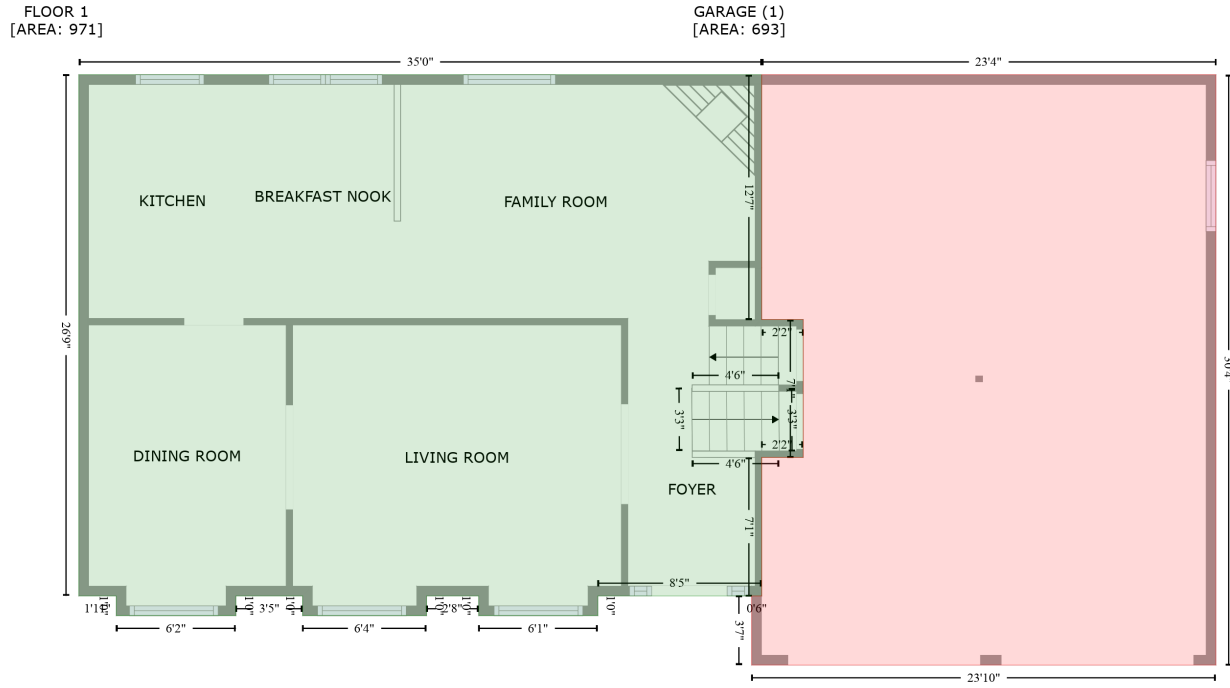


4428 N Adams Dr, Decatur, IL, US

Gross Living Area: 1781 sq. ft

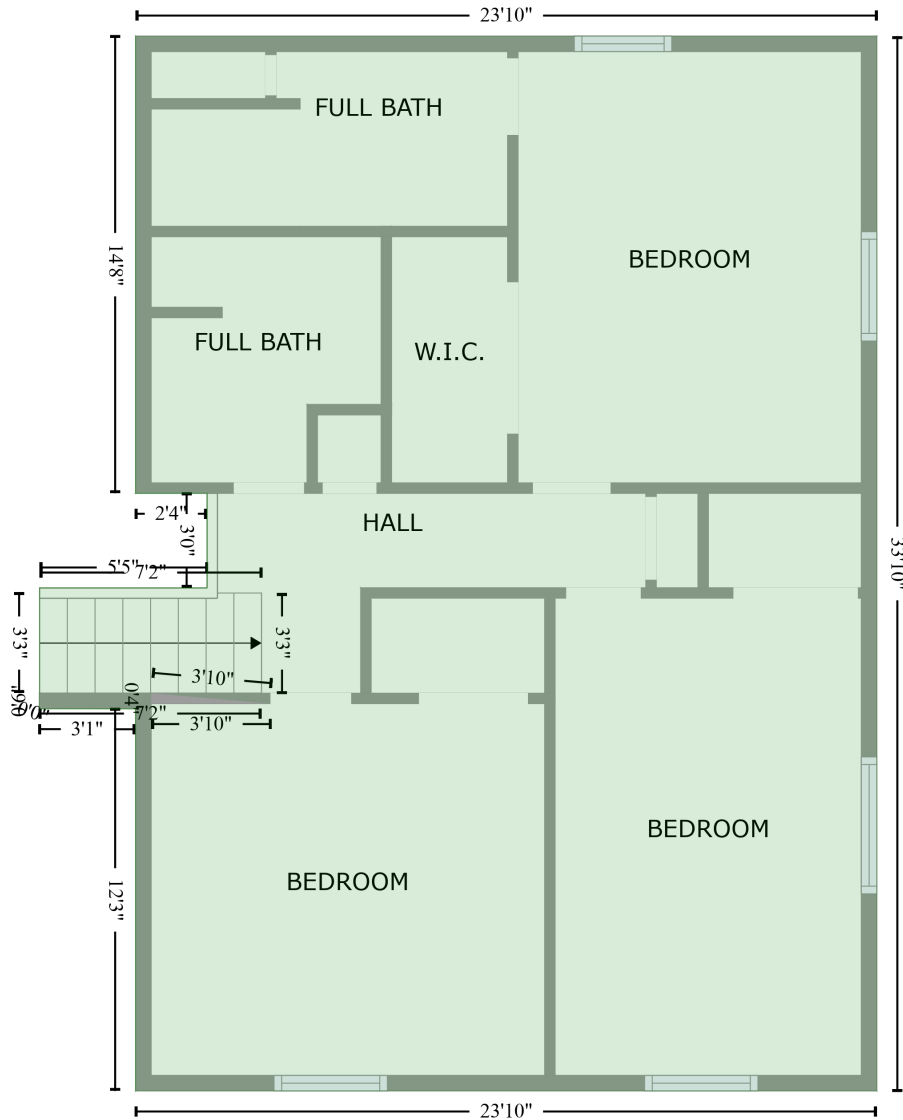


Space	Area (sq. ft)	Calculation <small>Coordinate Polygon Area Algorithm using inches</small>
FLOOR 1 (Living area)	971	$ \begin{aligned} & -((275.2 + 275.2) * (182.3 - 333.1) + (275.2 + 300.7) * (333.1 - 333.1) + (300.7 + 300.7) * (333.1 - 417.9) + (300.7 + 275.2) * (417.9 - 417.9) + (275.2 + 275.2) * (417.9 - 503.3) + (275.2 + 174.4) * \\ & (503.3 - 503.3) + (174.4 + 174.4) * (503.3 - 515.4) + (174.4 + 101) * (515.4 - 515.4) + (101 + 101) * \\ & (515.4 - 503.3) + (101 + 68.9) * (503.3 - 503.3) + (68.9 + 68.9) * (503.3 - 515.4) + (68.9 + -7.3) * \\ & (515.4 - 515.4) + (-7.3 + -7.3) * (515.4 - 503.3) + (-7.3 + -48.4) * (503.3 - 503.3) + (-48.4 + -48.4) * \\ & (503.3 - 515.4) + (-48.4 + -122) * (515.4 - 515.4) + (-122 + -122) * (515.4 - 503.3) + (-122 + -145) * \\ & (503.3 - 503.3) + (-145 + -145) * (503.3 - 182.3) + (-145 + 275.2) * (182.3 - 182.3) * 0.5 * \\ & 0.00694 \end{aligned} $
GARAGE (Non-living area)	693	$ \begin{aligned} & -((554.8 + 554.8) * (182.3 - 545.8) + (554.8 + 269.1) * (545.8 - 545.8) + (269.1 + 269.1) * (545.8 - 503.3) + (269.1 + 275.2) * (503.3 - 503.3) + (275.2 + 275.2) * (503.3 - 417.9) + (275.2 + 300.7) * \\ & (417.9 - 417.9) + (300.7 + 300.7) * (417.9 - 333.1) + (300.7 + 275.2) * (333.1 - 333.1) + (275.2 + 275.2) * (333.1 - 182.3) + (275.2 + 554.8) * (182.3 - 182.3) * 0.5 * 0.00694 \end{aligned} $

4428 N Adams Dr, Decatur, IL, US

Gross Living Area: 1781 sq. ft

FLOOR 2
[AREA: 810]



Space	Area (sq. ft)	Calculation <small>Coordinate Polygon Area Algorithm using inches</small>
FLOOR 2 (Living area)	810	$ \begin{aligned} & -((288.9 + 574.5) * (180.1 - 180.1) + (574.5 + 574.5) * (180.1 - 586.2) + (574.5 + 288.9) * (586.2 - \\ & 586.2) + (288.9 + 288.9) * (586.2 - 439.1) + (288.9 + 251.8) * (439.1 - 439) + (251.8 + 251.8) * \\ & (439 - 433) + (251.8 + 251.9) * (433 - 433.1) + (251.9 + 251.9) * (433.1 - 392.6) + (251.9 + 316.5) \\ & * (392.6 - 392.6) + (316.5 + 316.5) * (392.6 - 356.1) + (316.5 + 288.9) * (356.1 - 356.1) + (288.9 + \\ & 288.9) * (356.1 - 180.1)) * 0.5 * 0.00694 + -((294.9 + 341) * (437.1 - 437.1) + (341 + 294.9) * \\ & (437.1 - 433.1) + (294.9 + 294.9) * (433.1 - 437.1)) * 0.5 * 0.00694 \end{aligned} $