

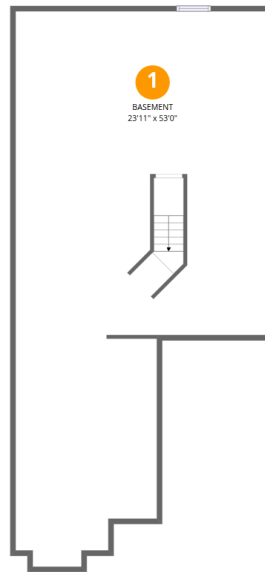
**Total Area: 1067 sq. ft**

Below Ground: 0 sq. ft, Floor 2: 1067 sq. ft

Excluded: Basement 1067 sq. ft, Garage 211 sq. ft

## Property summary





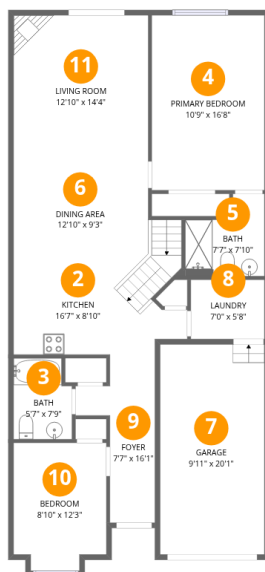
## Room dimensions

Floor 1 Below grade

Total:0sqft

Excluded: 1067sqft

#		Dimensions	sqft	Counted as living area
1	Basement	23'11" x 53'0"	1008 sq. ft	No



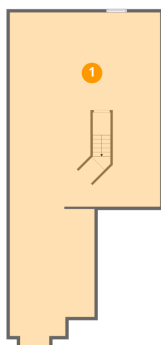
## Room dimensions

Floor 2

Total:1067sqft Excluded: 211sqft

#		Dimensions	sqft	Counted as living area
2	Kitchen	16'7" x 8'10"	132 sq. ft	Yes
3	Bath	5'7" x 7'9"	41 sq. ft	Yes
4	Primary Bedroom	10'9" x 16'8"	180 sq. ft	Yes
5	Bath	7'7" x 7'10"	48 sq. ft	Yes
6	Dining Area	12'10" x 9'3"	132 sq. ft	Yes
7	Garage	9'11" x 20'1"	200 sq. ft	No
8	Laundry	7'0" x 5'8"	40 sq. ft	Yes
9	Foyer	7'7" x 16'1"	78 sq. ft	Yes
10	Bedroom	8'10" x 12'3"	102 sq. ft	Yes
11	Living Room	12'10" x 14'4"	184 sq. ft	Yes

## 1 Floor 1 - Basement



Dimensions: 23'11" x 53'0"  
Area: 1008 sq. ft  
Counted as living area: No

Heated: Yes  
Finished: No  
Enclosed: Yes  
Contiguous: Yes  
Permitted: Yes  
Wet space: No  
Addition: No  
Conversion: No

## 2 Floor 2 - Kitchen



Dimensions: 16'7" x 8'10"  
Area: 132 sq. ft  
Counted as living area: Yes

Heated: Yes  
Finished: Yes  
Enclosed: Yes  
Contiguous: Yes  
Permitted: Yes  
Wet space: No  
Addition: No  
Conversion: No

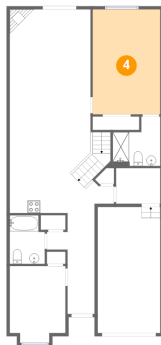
### 3 Floor 2 - Bath



Dimensions: 5'7" x 7'9"  
Area: 41 sq. ft  
Counted as living area: Yes

Heated: Yes  
Finished: Yes  
Enclosed: Yes  
Contiguous: Yes  
Permitted: Yes  
Wet space: Yes  
Addition: No  
Conversion: No

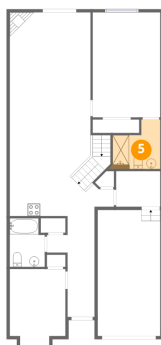
### 4 Floor 2 - Primary Bedroom



Dimensions: 10'9" x 16'8"  
Area: 180 sq. ft  
Counted as living area: Yes

Heated: Yes  
Finished: Yes  
Enclosed: Yes  
Contiguous: Yes  
Permitted: Yes  
Wet space: No  
Addition: No  
Conversion: No

### 5 Floor 2 - Bath



Dimensions: 7'7" x 7'10"  
Area: 48 sq. ft  
Counted as living area: Yes

Heated: Yes  
Finished: Yes  
Enclosed: Yes  
Contiguous: Yes  
Permitted: Yes  
Wet space: Yes  
Addition: No  
Conversion: No

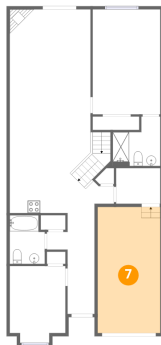
## 6 Floor 2 - Dining Area



Dimensions: 12'10" x 9'3"  
Area: 132 sq. ft  
Counted as living area: Yes

Heated: Yes  
Finished: Yes  
Enclosed: Yes  
Contiguous: Yes  
Permitted: Yes  
Wet space: No  
Addition: No  
Conversion: No

## 7 Floor 2 - Garage



Dimensions: 9'11" x 20'1"  
Area: 200 sq. ft  
Counted as living area: No

Heated: No  
Finished: No  
Enclosed: Yes  
Contiguous: Yes  
Permitted: Yes  
Wet space: No  
Addition: No  
Conversion: No

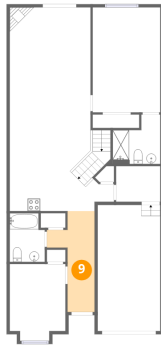
## 8 Floor 2 - Laundry



Dimensions: 7'0" x 5'8"  
Area: 40 sq. ft  
Counted as living area: Yes

Heated: Yes  
Finished: Yes  
Enclosed: Yes  
Contiguous: Yes  
Permitted: Yes  
Wet space: No  
Addition: No  
Conversion: No

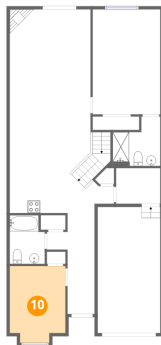
## 9 Floor 2 - Foyer



Dimensions: 7'7" x 16'1"  
Area: 78 sq. ft  
Counted as living area: Yes

Heated: Yes  
Finished: Yes  
Enclosed: Yes  
Contiguous: Yes  
Permitted: Yes  
Wet space: No  
Addition: No  
Conversion: No

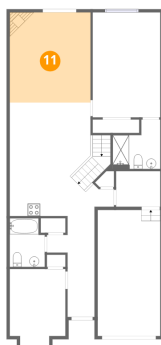
## 10 Floor 2 - Bedroom



Dimensions: 8'10" x 12'3"  
Area: 102 sq. ft  
Counted as living area: Yes

Heated: Yes  
Finished: Yes  
Enclosed: Yes  
Contiguous: Yes  
Permitted: Yes  
Wet space: No  
Addition: No  
Conversion: No

## 11 Floor 2 - Living Room



Dimensions: 12'10" x 14'4"  
Area: 184 sq. ft  
Counted as living area: Yes

Heated: Yes  
Finished: Yes  
Enclosed: Yes  
Contiguous: Yes  
Permitted: Yes  
Wet space: No  
Addition: No  
Conversion: No