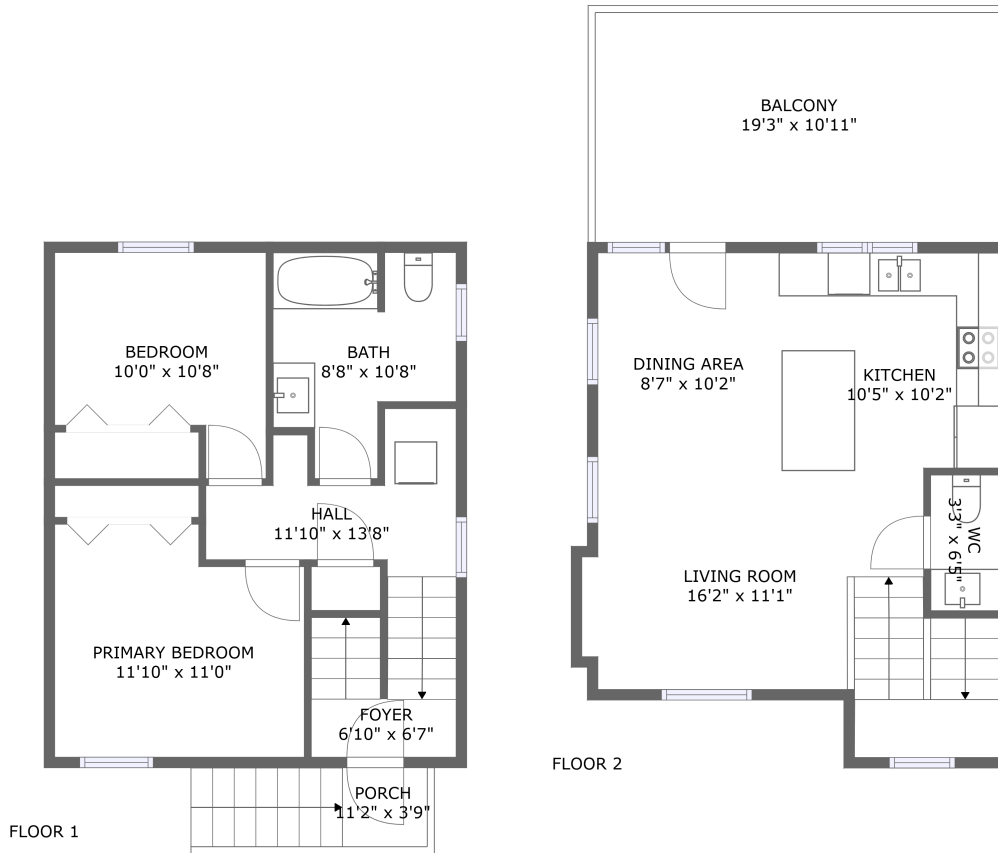


114 Ranchview Dr Carriage House, Nanaimo, British Columbia, Canada

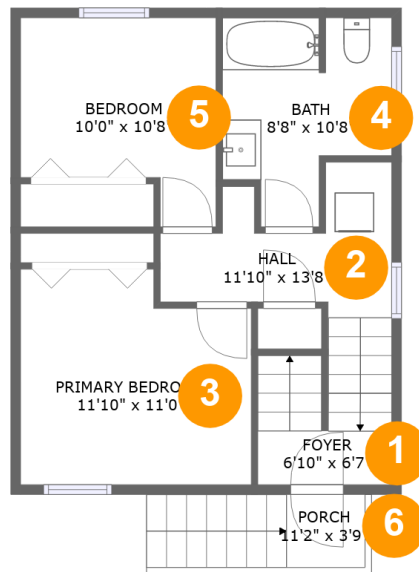


Property Summary

0 garages **2** bedrooms **1** bathrooms **1** half baths

2 floors **961** Gross Living Area sqft **1,232** total sqft

114 Ranchview Dr Carriage House, Nanaimo, British Columbia, Canada



Room Dimensions

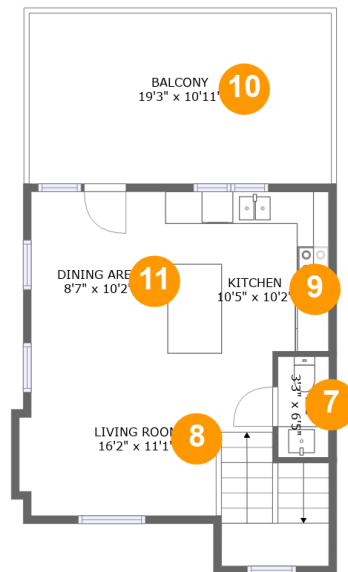
Floor 1

Total sqft: 545

Living area: 498

#	Room name	Dimensions	Area (sqft)	Counted as Living Area
1	Foyer	6'10" x 6'7"	32 sq. ft	Yes
2	Hall	11'10" x 13'8"	75 sq. ft	Yes
3	Primary Bedroom	11'10" x 11'0"	120 sq. ft	Yes
4	Bath	8'8" x 10'8"	73 sq. ft	Yes
5	Bedroom	10'0" x 10'8"	89 sq. ft	Yes
6	Porch	11'2" x 3'9"	47 sq. ft	No

114 Ranchview Dr Carriage House, Nanaimo, British Columbia, Canada



Room Dimensions

Floor 2

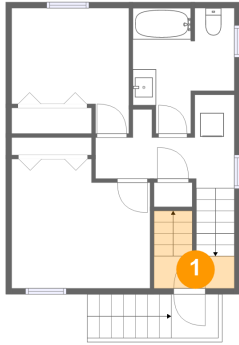
Total sqft: 687

Living area: 463

#	Room name	Dimensions	Area (sqft)	Counted as Living Area
7	Wc	3'3" x 6'5"	21 sq. ft	Yes
8	Living Room	16'2" x 11'1"	155 sq. ft	Yes
9	Kitchen	10'5" x 10'2"	106 sq. ft	Yes
10	Balcony	19'3" x 10'11"	224 sq. ft	No
11	Dining Area	8'7" x 10'2"	87 sq. ft	Yes

114 Ranchview Dr Carriage House, Nanaimo, British Columbia, Canada

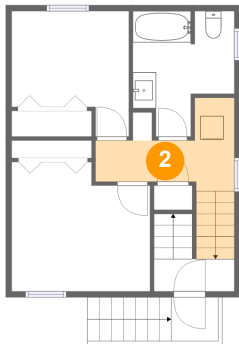
1 Floor 1 - Foyer



Dimensions: 6'10" x 6'7"
Area: 32 sq. ft
Counted as Living Area:
Yes

Heated: Yes
Finished: Yes
Enclosed: Yes
Contiguous:
Yes
Permitted: Yes
Wet Space: No
Addition: No
Conversion: No

2 Floor 1 - Hall

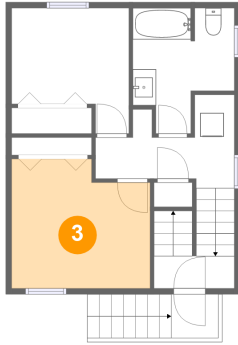


Dimensions: 11'10" x 13'8"
Area: 75 sq. ft
Counted as Living Area:
Yes

Heated: Yes
Finished: Yes
Enclosed: Yes
Contiguous:
Yes
Permitted: Yes
Wet Space: No
Addition: No
Conversion: No

114 Ranchview Dr Carriage House, Nanaimo, British Columbia, Canada

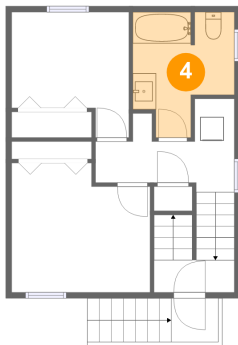
3 Floor 1 - Primary Bedroom



Dimensions: 11'10" x 11'0"
Area: 120 sq. ft
Counted as Living Area:
Yes

Heated: Yes
Finished: Yes
Enclosed: Yes
Contiguous:
Yes
Permitted: Yes
Wet Space: No
Addition: No
Conversion: No

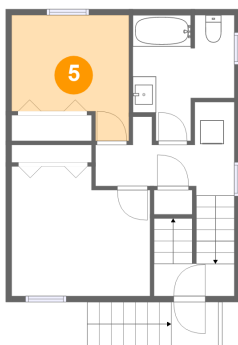
4 Floor 1 - Bath



Dimensions: 8'8" x 10'8"
Area: 73 sq. ft
Counted as Living Area:
Yes

Heated: Yes
Finished: Yes
Enclosed: Yes
Contiguous:
Yes
Permitted: Yes
Wet Space: Yes
Addition: No
Conversion: No

5 Floor 1 - Bedroom

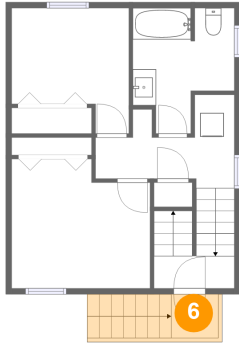


Dimensions: 10'0" x 10'8"
Area: 89 sq. ft
Counted as Living Area:
Yes

Heated: Yes
Finished: Yes
Enclosed: Yes
Contiguous:
Yes
Permitted: Yes
Wet Space: No
Addition: No
Conversion: No

114 Ranchview Dr Carriage House, Nanaimo, British Columbia, Canada

6 Floor 1 - Porch



Dimensions: 11'2" x 3'9"
Area: 47 sq. ft
Counted as Living Area: No

Heated: No
Finished: Yes
Enclosed: No
Contiguous: Yes
Permitted: Yes
Wet Space: No
Addition: No
Conversion: No

7 Floor 2 - Wc



Dimensions: 3'3" x 6'5"
Area: 21 sq. ft
Counted as Living Area: Yes

Heated: Yes
Finished: Yes
Enclosed: Yes
Contiguous: Yes
Permitted: Yes
Wet Space: Yes
Addition: No
Conversion: No

8 Floor 2 - Living Room



Dimensions: 16'2" x 11'1"
Area: 155 sq. ft
Counted as Living Area: Yes

Heated: Yes
Finished: Yes
Enclosed: Yes
Contiguous: Yes
Permitted: Yes
Wet Space: No
Addition: No
Conversion: No

114 Ranchview Dr Carriage House, Nanaimo, British Columbia, Canada

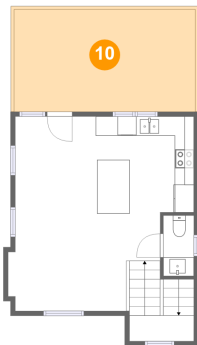
9 Floor 2 - Kitchen



Dimensions: 10'5" x 10'2"
Area: 106 sq. ft
Counted as Living Area:
Yes

Heated: Yes
Finished: Yes
Enclosed: Yes
Contiguous:
Yes
Permitted: Yes
Wet Space: No
Addition: No
Conversion: No

10 Floor 2 - Balcony



Dimensions: 19'3" x 10'11"
Area: 224 sq. ft
Counted as Living Area: No

Heated: No
Finished: Yes
Enclosed: No
Contiguous: Yes
Permitted: Yes
Wet Space: No
Addition: No
Conversion: No

11 Floor 2 - Dining Area



Dimensions: 8'7" x 10'2"
Area: 87 sq. ft
Counted as Living Area:
Yes

Heated: Yes
Finished: Yes
Enclosed: Yes
Contiguous:
Yes
Permitted: Yes
Wet Space: No
Addition: No
Conversion: No