

1034 Contentment Lane, Moneta, Bedford County, Virginia, United States, 24121

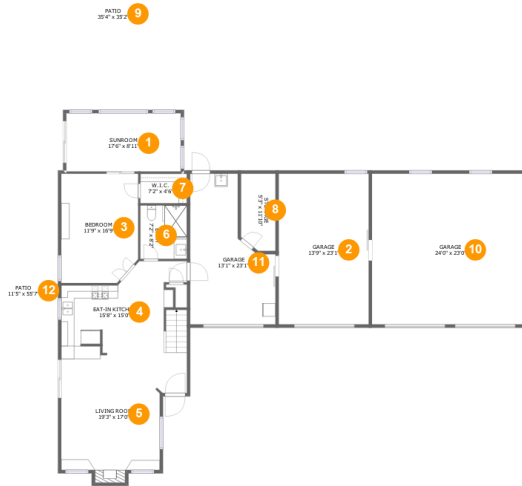


Property Summary

3 garages **3** bedrooms **2** bathrooms **0** half baths

2 floors **1,632** Gross Living Area sqft **4,666** total sqft

1034 Contentment Lane, Moneta, Bedford County, Virginia, United States, 24121



Room Dimensions

Floor 1

Total sqft: 3754

Living area: 1061

#	Room name	Dimensions	Area (sqft)	Counted as Living Area
1	Sunroom	17'6" x 8'11"	156 sq. ft	Yes
2	Garage	13'9" x 23'1"	318 sq. ft	No
3	Bedroom	11'9" x 16'9"	191 sq. ft	Yes
4	Eat-in Kitchen	15'8" x 15'0"	238 sq. ft	Yes
5	Living Room	19'3" x 17'0"	287 sq. ft	Yes
6	Bath	7'2" x 8'2"	58 sq. ft	Yes
7	W.i.c.	7'2" x 4'6"	32 sq. ft	Yes
8	Storage	5'3" x 11'10"	59 sq. ft	No
9	Patio	35'4" x 35'2"	819 sq. ft	No
10	Garage	24'0" x 23'0"	553 sq. ft	No
11	Garage	13'1" x 23'1"	234 sq. ft	No

Scan captured on Wed, 28 Aug 2024 20:43:08 GMT

Information is calculated by CubiCasa technology; deemed highly reliable but not guaranteed.

**1034 Contentment Lane, Moneta, Bedford
County, Virginia, United States, 24121**

#	Room name	Dimensions	Area (sqft)	Counted as Living Area
12	Patio	11'5" x 55'7"	602 sq. ft	No

1034 Contentment Lane, Moneta, Bedford County, Virginia, United States, 24121



Room Dimensions

Floor 2

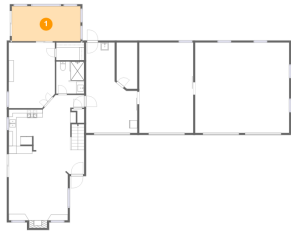
Total sqft: 912

Living area: 571

#	Room name	Dimensions	Area (sqft)	Counted as Living Area
13	Primary Bedroom	15'1" x 10'3"	155 sq. ft	Yes
14	Hall	6'8" x 6'1"	60 sq. ft	Yes
15	Laundry	2'8" x 5'7"	15 sq. ft	Yes
16	Balcony	8'6" x 4'5"	38 sq. ft	No
17	Open To Below	15'1" x 19'7"	276 sq. ft	No
18	W.i.c.	3'10" x 8'9"	34 sq. ft	Yes
19	Bath	7'7" x 5'7"	52 sq. ft	Yes
20	Bedroom	13'6" x 10'10"	159 sq. ft	Yes

1034 Contentment Lane, Moneta, Bedford County, Virginia, United States, 24121

1 Floor 1 - Sunroom



Dimensions: 17'6" x 8'11"
Area: 156 sq. ft
Counted as Living Area:
Yes

Heated: Yes
Finished: Yes
Enclosed: Yes
Contiguous:
Yes
Permitted: Yes
Wet Space: No
Addition: No
Conversion: No

2 Floor 1 - Garage



Dimensions: 13'9" x 23'1"
Area: 318 sq. ft
Counted as Living Area: No

Heated: No
Finished: No
Enclosed: Yes
Contiguous: Yes
Permitted: Yes
Wet Space: No
Addition: No
Conversion: No

1034 Contentment Lane, Moneta, Bedford County, Virginia, United States, 24121

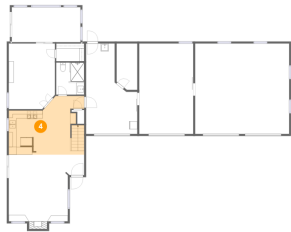
3 Floor 1 - Bedroom



Dimensions: 11'9" x 16'9"
Area: 191 sq. ft
Counted as Living Area:
Yes

Heated: Yes
Finished: Yes
Enclosed: Yes
Contiguous:
Yes
Permitted: Yes
Wet Space: No
Addition: No
Conversion: No

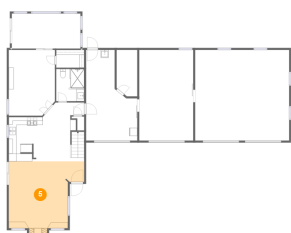
4 Floor 1 - Eat-in Kitchen



Dimensions: 15'8" x 15'0"
Area: 238 sq. ft
Counted as Living Area:
Yes

Heated: Yes
Finished: Yes
Enclosed: Yes
Contiguous:
Yes
Permitted: Yes
Wet Space: No
Addition: No
Conversion: No

5 Floor 1 - Living Room



Dimensions: 19'3" x 17'0"
Area: 287 sq. ft
Counted as Living Area:
Yes

Heated: Yes
Finished: Yes
Enclosed: Yes
Contiguous:
Yes
Permitted: Yes
Wet Space: No
Addition: No
Conversion: No

1034 Contentment Lane, Moneta, Bedford County, Virginia, United States, 24121

6 Floor 1 - Bath



Dimensions: 7'2" x 8'2"
Area: 58 sq. ft
Counted as Living Area:
Yes

Heated: Yes
Finished: Yes
Enclosed: Yes
Contiguous:
Yes
Permitted: Yes
Wet Space: Yes
Addition: No
Conversion: No

7 Floor 1 - W.i.c.



Dimensions: 7'2" x 4'6"
Area: 32 sq. ft
Counted as Living Area:
Yes

Heated: Yes
Finished: Yes
Enclosed: Yes
Contiguous:
Yes
Permitted: Yes
Wet Space: No
Addition: No
Conversion: No

8 Floor 1 - Storage

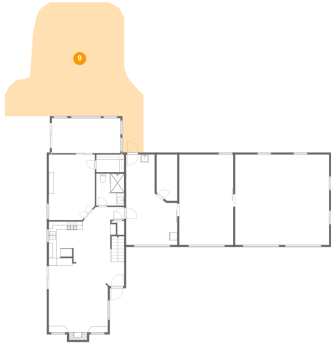


Dimensions: 5'3" x 11'10"
Area: 59 sq. ft
Counted as Living Area: No

Heated: No
Finished: No
Enclosed: No
Contiguous: Yes
Permitted: Yes
Wet Space: No
Addition: No
Conversion: No

1034 Contentment Lane, Moneta, Bedford County, Virginia, United States, 24121

9 Floor 1 - Patio



Dimensions: 35'4" x 35'2"
Area: 819 sq. ft
Counted as Living Area: No

Heated: No
Finished: Yes
Enclosed: No
Contiguous: Yes
Permitted: Yes
Wet Space: No
Addition: No
Conversion: No

10 Floor 1 - Garage



Dimensions: 24'0" x 23'0"
Area: 553 sq. ft
Counted as Living Area: No

Heated: No
Finished: No
Enclosed: Yes
Contiguous: Yes
Permitted: Yes
Wet Space: No
Addition: No
Conversion: No

11 Floor 1 - Garage



Dimensions: 13'1" x 23'1"
Area: 234 sq. ft
Counted as Living Area: No

Heated: No
Finished: No
Enclosed: Yes
Contiguous: Yes
Permitted: Yes
Wet Space: No
Addition: No
Conversion: No

1034 Contentment Lane, Moneta, Bedford County, Virginia, United States, 24121

12 Floor 1 - Patio



Dimensions: 11'5" x 55'7"
Area: 602 sq. ft
Counted as Living Area: No

Heated: No
Finished: Yes
Enclosed: No
Contiguous: Yes
Permitted: Yes
Wet Space: No
Addition: No
Conversion: No

13 Floor 2 - Primary Bedroom



Dimensions: 15'1" x 10'3"
Area: 155 sq. ft
Counted as Living Area:
Yes

Heated: Yes
Finished: Yes
Enclosed: Yes
Contiguous:
Yes
Permitted: Yes
Wet Space: No
Addition: No
Conversion: No

14 Floor 2 - Hall



Dimensions: 6'8" x 6'1"
Area: 60 sq. ft
Counted as Living Area:
Yes

Heated: Yes
Finished: Yes
Enclosed: Yes
Contiguous:
Yes
Permitted: Yes
Wet Space: No
Addition: No
Conversion: No

1034 Contentment Lane, Moneta, Bedford County, Virginia, United States, 24121

15 Floor 2 - Laundry



Dimensions: 2'8" x 5'7"
Area: 15 sq. ft
Counted as Living Area:
Yes

Heated: Yes
Finished: Yes
Enclosed: Yes
Contiguous:
Yes
Permitted: Yes
Wet Space: No
Addition: No
Conversion: No

16 Floor 2 - Balcony



Dimensions: 8'6" x 4'5"
Area: 38 sq. ft
Counted as Living Area: No

Heated: No
Finished: Yes
Enclosed: No
Contiguous: Yes
Permitted: Yes
Wet Space: No
Addition: No
Conversion: No

17 Floor 2 - Open To Below



Dimensions: 15'1" x 19'7"
Area: 276 sq. ft
Counted as Living Area: No

Heated: No
Finished: No
Enclosed: No
Contiguous: Yes
Permitted: No
Wet Space: No
Addition: No
Conversion: No

1034 Contentment Lane, Moneta, Bedford County, Virginia, United States, 24121

18 Floor 2 - W.i.c.



Dimensions: 3'10" x 8'9"
Area: 34 sq. ft
Counted as Living Area:
Yes

Heated: Yes
Finished: Yes
Enclosed: Yes
Contiguous:
Yes
Permitted: Yes
Wet Space: No
Addition: No
Conversion: No

19 Floor 2 - Bath



Dimensions: 7'7" x 5'7"
Area: 52 sq. ft
Counted as Living Area:
Yes

Heated: Yes
Finished: Yes
Enclosed: Yes
Contiguous:
Yes
Permitted: Yes
Wet Space: Yes
Addition: No
Conversion: No

20 Floor 2 - Bedroom



Dimensions: 13'6" x 10'10"
Area: 159 sq. ft
Counted as Living Area:
Yes

Heated: Yes
Finished: Yes
Enclosed: Yes
Contiguous:
Yes
Permitted: Yes
Wet Space: No
Addition: No
Conversion: No