

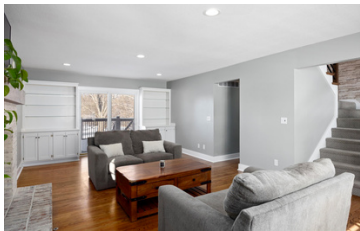


PRESENTING
HAVENSTEAD

10 +/- ACRE PARCEL

3 BED / 2.5 BATH TWO STORY HOME

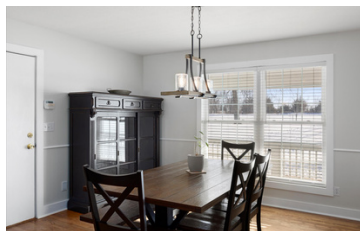
1390 N 550 ROAD
BALDWIN CITY, KS 66006



LIVING ROOM



KITCHEN



DINING



POND

Welcome to Havenstead, a beautiful 10-acre retreat in rural Baldwin City, Kansas. This property offers privacy, modern updates, and rustic charm, making it an ideal getaway. The 2-story home, built in 1989, has 3 bedrooms, 2.5 bathrooms, and a fully finished basement. Recent updates include a modern kitchen, refreshed bathrooms, and a newer HVAC system, ensuring comfort and convenience.

A fully stocked pond serves as the property's focal point, overlooked by a 60 x 40 insulated outbuilding. This impressive structure is heated and cooled, with a finished area featuring a bar, kitchenette, and half bath. The large, covered patio offers a perfect spot to relax or entertain while enjoying the pond's peaceful views.

Additional features include a garden shed and a chicken coop with a fenced area, perfect for hobby farming or enjoying rural living. The expansive acreage provides space for gardening, recreation, and soaking up the Kansas countryside. Havenstead offers the perfect balance of comfort and country living. Schedule your private tour today!

HECK



785-917-5700



HECK.REALESTATE



DANA@HECK.REALESTATE

