

Home report

1744 High Gate Lane, Robin Hood Park, Salem, Roanoke County,
Virginia, United States, 24153



Total GLA: 2968 sq. ft
Floor 1: 503 sq. ft, Floor 2: 1260 sq. ft, Floor 3: 1205 sq. ft
Excluded: Garage 671 sq. ft, Covered patio 171 sq. ft, Patio 100 sq. ft, Deck 167 sq. ft, Porch 39 sq. ft, Fireplace 13 sq. ft

Property summary

**3** Floors

**4** Bedrooms

**3** Bathrooms

Home report

**1744 High Gate Lane, Robin Hood Park, Salem, Roanoke County,
Virginia, United States, 24153**



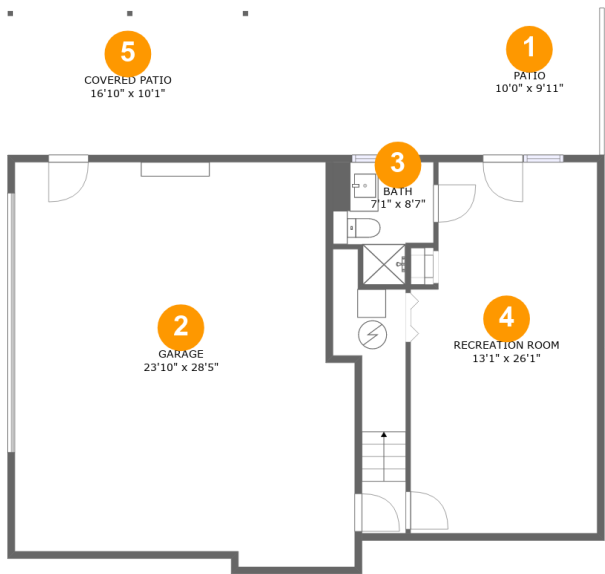
1
Half baths



1
Garages

Home report

1744 High Gate Lane, Robin Hood Park, Salem, Roanoke County,
Virginia, United States, 24153



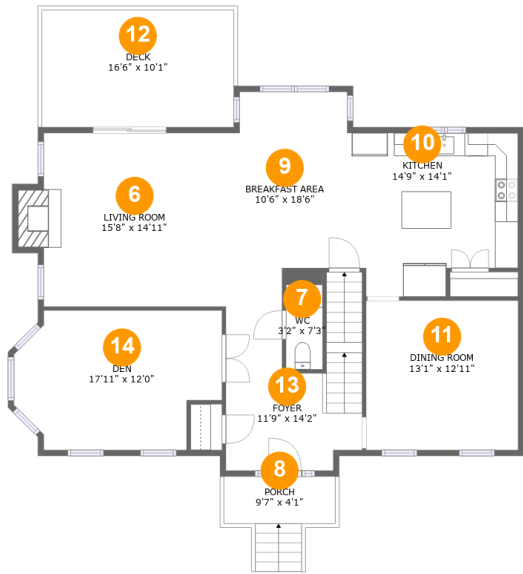
Room dimensions

Floor 1 Total:503sqft Excluded: 942sqft

#		Max Dimensions	sqft	Included
1	Patio	10'0" x 9'11"	100 sq. ft	No
2	Garage	23'10" x 28'5"	632 sq. ft	No
3	Bath	7'1" x 8'7"	49 sq. ft	Yes
4	Recreation Room	13'1" x 26'1"	324 sq. ft	Yes
5	Covered Patio	16'10" x 10'1"	171 sq. ft	No

Home report

1744 High Gate Lane, Robin Hood Park, Salem, Roanoke County,
Virginia, United States, 24153



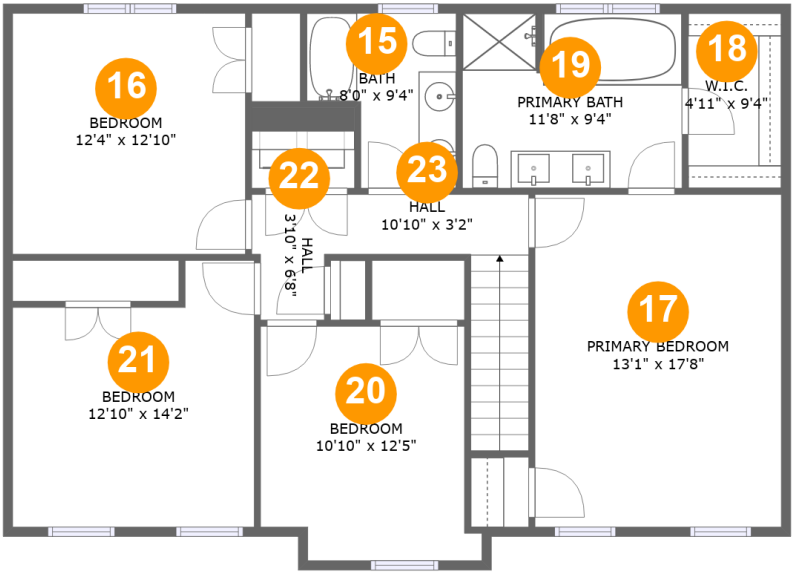
Room dimensions

Floor 2 Total:1260sqft Excluded: 219sqft

#		Max Dimensions	sqft	Included
6	Living Room	15'8" x 14'11"	246 sq. ft	Yes
7	WC	3'2" x 7'3"	26 sq. ft	Yes
8	Porch	9'7" x 4'1"	39 sq. ft	No
9	Breakfast Area	10'6" x 18'6"	171 sq. ft	Yes
10	Kitchen	14'9" x 14'1"	189 sq. ft	Yes
11	Dining Room	13'1" x 12'11"	169 sq. ft	Yes
12	Deck	16'6" x 10'1"	167 sq. ft	No
13	Foyer	11'9" x 14'2"	149 sq. ft	Yes
14	Den	17'11" x 12'0"	190 sq. ft	Yes

Home report

1744 High Gate Lane, Robin Hood Park, Salem, Roanoke County,
Virginia, United States, 24153



Room dimensions

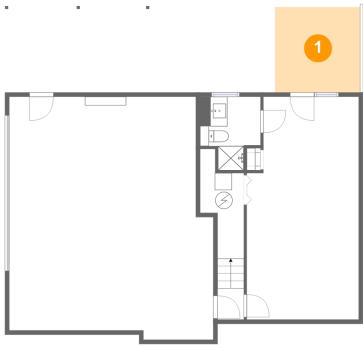
Floor 3

Total:1205sqft

Excluded: 0sqft

#		Max Dimensions	sqft	Included
15	Bath	8'0" x 9'4"	61 sq. ft	Yes
16	Bedroom	12'4" x 12'10"	159 sq. ft	Yes
17	Primary Bedroom	13'1" x 17'8"	232 sq. ft	Yes
18	W.I.C.	4'11" x 9'4"	46 sq. ft	Yes
19	Primary Bath	11'8" x 9'4"	108 sq. ft	Yes
20	Bedroom	10'10" x 12'5"	132 sq. ft	Yes
21	Bedroom	12'10" x 14'2"	159 sq. ft	Yes
22	Hall	3'10" x 6'8"	24 sq. ft	Yes
23	Hall	10'10" x 3'2"	67 sq. ft	Yes

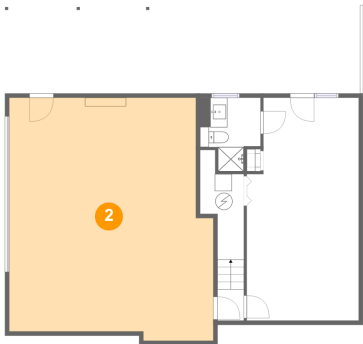
1 Floor 1 - Patio



Max Dimensions: 10'0" x 9'11"
Calculated Area: 100 sq. ft
Included: No

Heated: No
Finished: Yes
Enclosed: No
Contiguous: Yes
Permitted: Yes
Wet space: No
Addition: No
Conversion: No

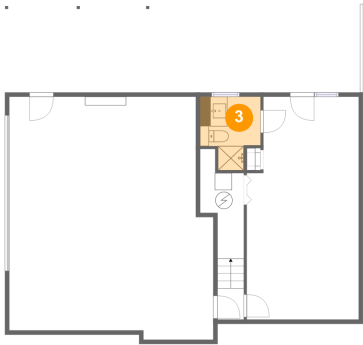
2 Floor 1 - Garage



Max Dimensions: 23'10" x 28'5"
Calculated Area: 632 sq. ft
Included: No

Heated: No
Finished: No
Enclosed: Yes
Contiguous: Yes
Permitted: Yes
Wet space: No
Addition: No
Conversion: No

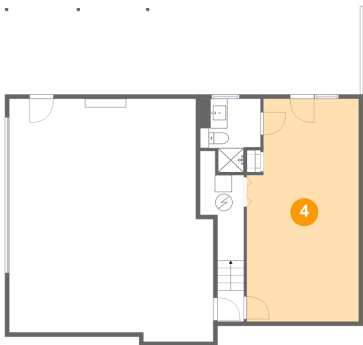
3 Floor 1 - Bath



Max Dimensions: 7'1" x 8'7"
Calculated Area: 49 sq. ft
Included: Yes

Heated: Yes
Finished: Yes
Enclosed: Yes
Contiguous: Yes
Permitted: Yes
Wet space: Yes
Addition: No
Conversion: No

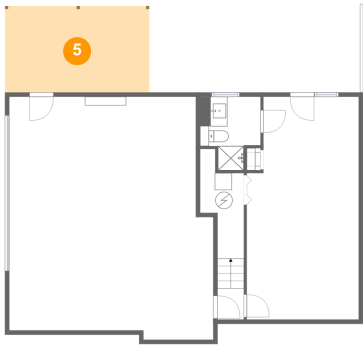
4 Floor 1 - Recreation Room



Max Dimensions: 13'1" x 26'1"
Calculated Area: 324 sq. ft
Included: Yes

Heated: Yes
Finished: Yes
Enclosed: Yes
Contiguous: Yes
Permitted: Yes
Wet space: No
Addition: No
Conversion: No

5 Floor 1 - Covered Patio

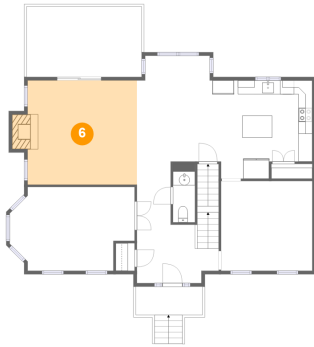


Max Dimensions: 16'10" x 10'1"
Calculated Area: 171 sq. ft
Included: No

Heated: No
Finished: Yes
Enclosed: No
Contiguous: Yes
Permitted: Yes
Wet space: No
Addition: No
Conversion: No

1744 High Gate Lane, Robin Hood Park, Salem, Roanoke County,
Virginia, United States, 24153

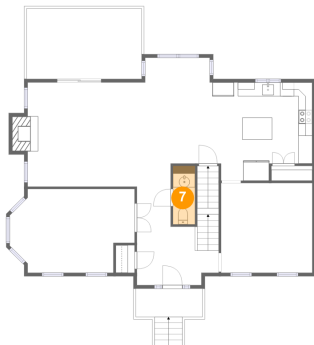
6 Floor 2 - Living Room



Max Dimensions: 15'8" x 14'11"
Calculated Area: 246 sq. ft
Included: Yes

Heated: Yes
Finished: Yes
Enclosed: Yes
Contiguous: Yes
Permitted: Yes
Wet space: No
Addition: No
Conversion: No

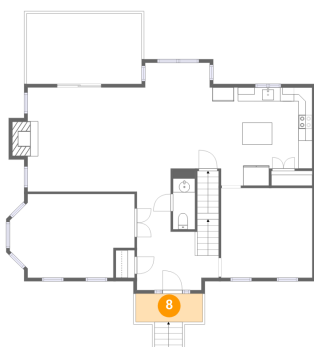
7 Floor 2 - WC



Max Dimensions: 3'2" x 7'3"
Calculated Area: 26 sq. ft
Included: Yes

Heated: Yes
Finished: Yes
Enclosed: Yes
Contiguous: Yes
Permitted: Yes
Wet space: Yes
Addition: No
Conversion: No

8 Floor 2 - Porch



Max Dimensions: 9'7" x 4'1"
Calculated Area: 39 sq. ft
Included: No

Heated: No
Finished: Yes
Enclosed: No
Contiguous: Yes
Permitted: Yes
Wet space: No
Addition: No
Conversion: No

1744 High Gate Lane, Robin Hood Park, Salem, Roanoke County,
Virginia, United States, 24153

9 Floor 2 - Breakfast Area



Max Dimensions: 10'6" x 18'6"
Calculated Area: 171 sq. ft
Included: Yes

Heated: Yes
Finished: Yes
Enclosed: Yes
Contiguous: Yes
Permitted: Yes
Wet space: No
Addition: No
Conversion: No

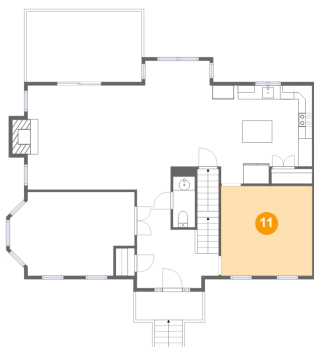
10 Floor 2 - Kitchen



Max Dimensions: 14'9" x 14'1"
Calculated Area: 189 sq. ft
Included: Yes

Heated: Yes
Finished: Yes
Enclosed: Yes
Contiguous: Yes
Permitted: Yes
Wet space: No
Addition: No
Conversion: No

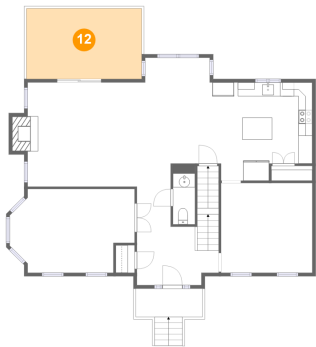
11 Floor 2 - Dining Room



Max Dimensions: 13'1" x 12'11"
Calculated Area: 169 sq. ft
Included: Yes

Heated: Yes
Finished: Yes
Enclosed: Yes
Contiguous: Yes
Permitted: Yes
Wet space: No
Addition: No
Conversion: No

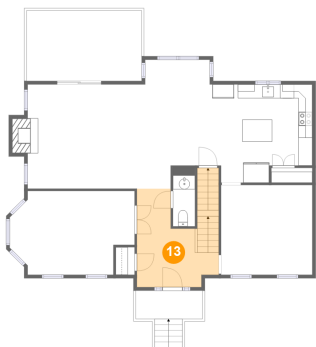
12 Floor 2 - Deck



Max Dimensions: 16'6" x 10'1"
Calculated Area: 167 sq. ft
Included: No

Heated: No
Finished: Yes
Enclosed: No
Contiguous: No
Permitted: Yes
Wet space: No
Addition: No
Conversion: No

13 Floor 2 - Foyer



Max Dimensions: 11'9" x 14'2"
Calculated Area: 149 sq. ft
Included: Yes

Heated: Yes
Finished: Yes
Enclosed: Yes
Contiguous: Yes
Permitted: Yes
Wet space: No
Addition: No
Conversion: No

14 Floor 2 - Den

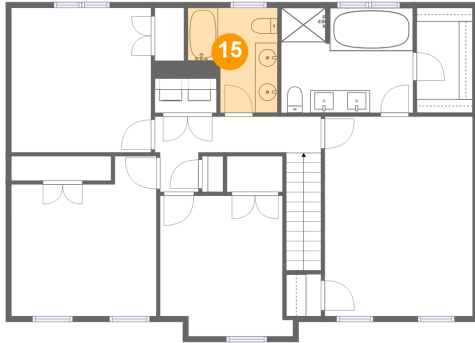


Max Dimensions: 17'11" x 12'0"
Calculated Area: 190 sq. ft
Included: Yes

Heated: Yes
Finished: Yes
Enclosed: Yes
Contiguous: Yes
Permitted: Yes
Wet space: No
Addition: No
Conversion: No

1744 High Gate Lane, Robin Hood Park, Salem, Roanoke County,
Virginia, United States, 24153

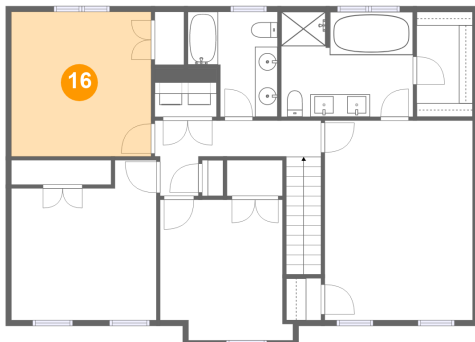
15 Floor 3 - Bath



Max Dimensions: 8'0" x 9'4"
Calculated Area: 61 sq. ft
Included: Yes

Heated: Yes
Finished: Yes
Enclosed: Yes
Contiguous: Yes
Permitted: Yes
Wet space: Yes
Addition: No
Conversion: No

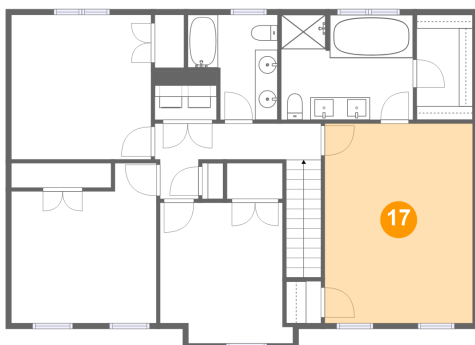
16 Floor 3 - Bedroom



Max Dimensions: 12'4" x 12'10"
Calculated Area: 159 sq. ft
Included: Yes

Heated: Yes
Finished: Yes
Enclosed: Yes
Contiguous: Yes
Permitted: Yes
Wet space: No
Addition: No
Conversion: No

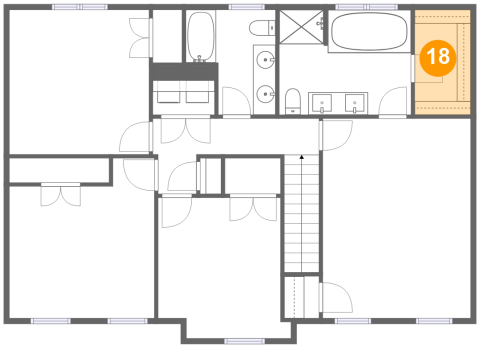
17 Floor 3 - Primary Bedroom



Max Dimensions: 13'1" x 17'8"
Calculated Area: 232 sq. ft
Included: Yes

Heated: Yes
Finished: Yes
Enclosed: Yes
Contiguous: Yes
Permitted: Yes
Wet space: No
Addition: No
Conversion: No

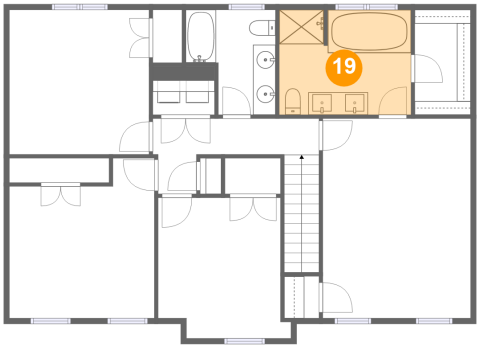
18 Floor 3 - W.I.C.



Max Dimensions: 4'11" x 9'4"
Calculated Area: 46 sq. ft
Included: Yes

Heated: Yes
Finished: Yes
Enclosed: Yes
Contiguous: Yes
Permitted: Yes
Wet space: No
Addition: No
Conversion: No

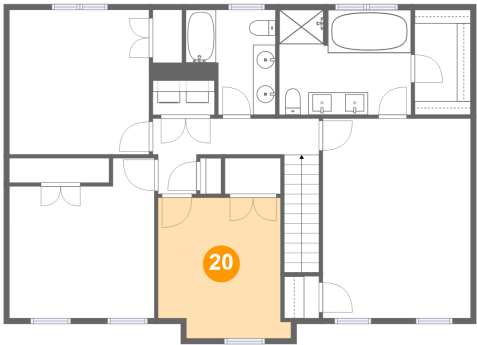
19 Floor 3 - Primary Bath



Max Dimensions: 11'8" x 9'4"
Calculated Area: 108 sq. ft
Included: Yes

Heated: Yes
Finished: Yes
Enclosed: Yes
Contiguous: Yes
Permitted: Yes
Wet space: Yes
Addition: No
Conversion: No

20 Floor 3 - Bedroom

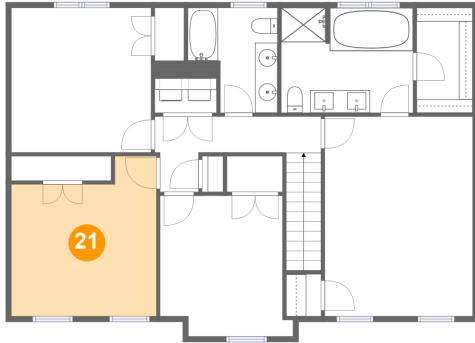


Max Dimensions: 10'10" x 12'5"
Calculated Area: 132 sq. ft
Included: Yes

Heated: Yes
Finished: Yes
Enclosed: Yes
Contiguous: Yes
Permitted: Yes
Wet space: No
Addition: No
Conversion: No

1744 High Gate Lane, Robin Hood Park, Salem, Roanoke County,
Virginia, United States, 24153

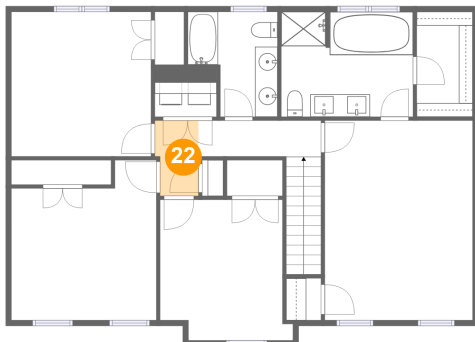
21 Floor 3 - Bedroom



Max Dimensions: 12'10" x 14'2"
Calculated Area: 159 sq. ft
Included: Yes

Heated: Yes
Finished: Yes
Enclosed: Yes
Contiguous: Yes
Permitted: Yes
Wet space: No
Addition: No
Conversion: No

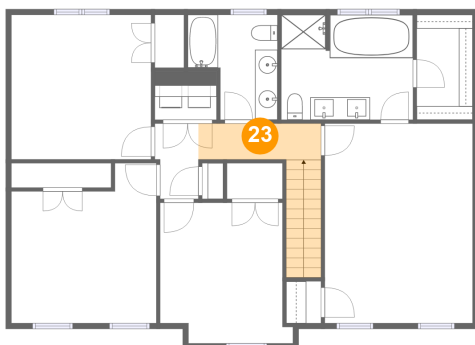
22 Floor 3 - Hall



Max Dimensions: 3'10" x 6'8"
Calculated Area: 24 sq. ft
Included: Yes

Heated: Yes
Finished: Yes
Enclosed: Yes
Contiguous: Yes
Permitted: Yes
Wet space: No
Addition: No
Conversion: No

23 Floor 3 - Hall



Max Dimensions: 10'10" x 3'2"
Calculated Area: 67 sq. ft
Included: Yes

Heated: Yes
Finished: Yes
Enclosed: Yes
Contiguous: Yes
Permitted: Yes
Wet space: No
Addition: No
Conversion: No