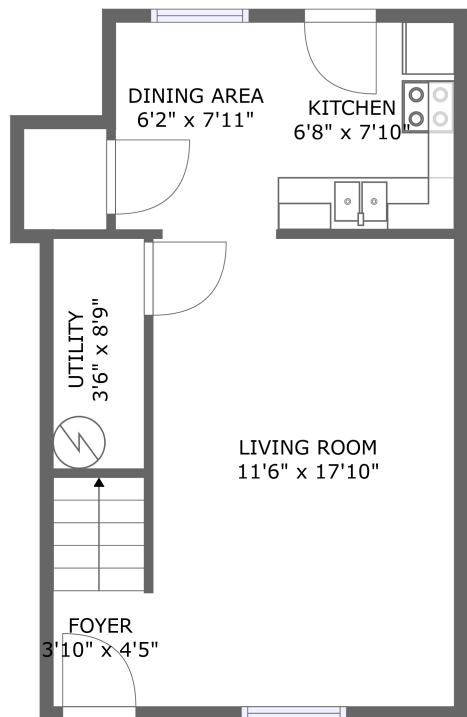
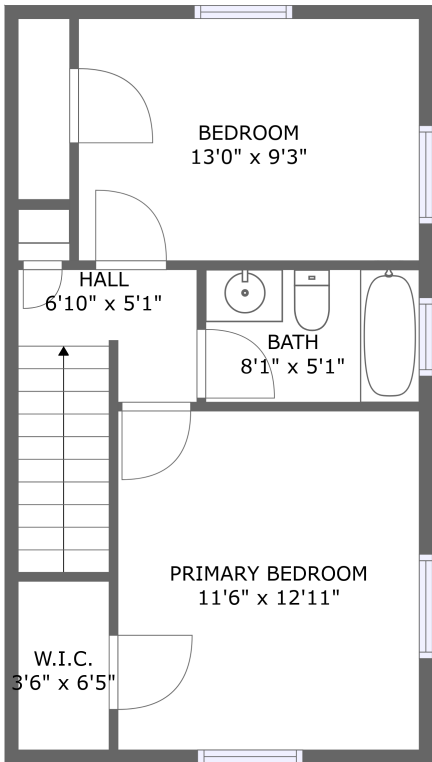


707 Bibb Street Northeast, Roanoke, Virginia 24012, United States



FLOOR 1



FLOOR 2


Total GLA: 903 sq. ft

Floor 1: 435 sq. ft, Floor 2: 468 sq. ft

Excluded:

Property summary

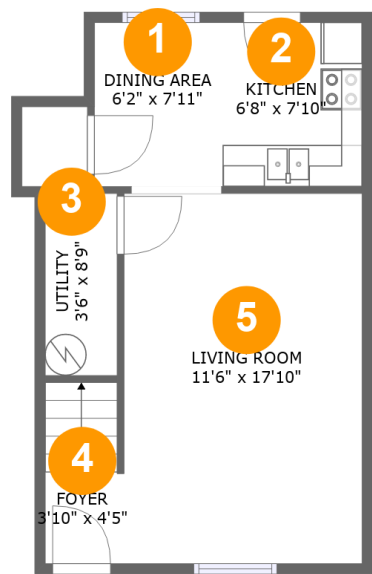
 2 Floors

 2 Bedrooms

 1 Bathrooms

Home report

707 Bibb Street Northeast, Roanoke, Virginia 24012, United States



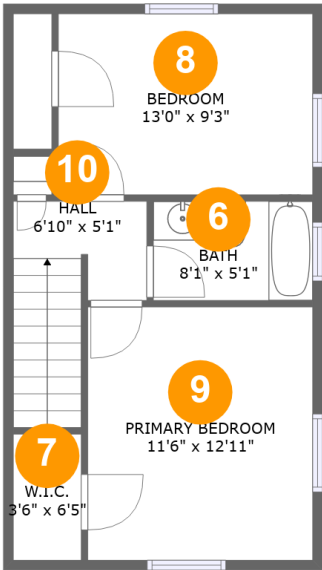
Room dimensions

Floor 1 Total:435sqft Excluded: 0sqft

#		Max Dimensions	sqft	Included
1	Dining Area	6'2" x 7'11"	49 sq. ft	Yes
2	Kitchen	6'8" x 7'10"	53 sq. ft	Yes
3	Utility	3'6" x 8'9"	30 sq. ft	Yes
4	Foyer	3'10" x 4'5"	32 sq. ft	Yes
5	Living Room	11'6" x 17'10"	204 sq. ft	Yes

Home report

707 Bibb Street Northeast, Roanoke, Virginia 24012, United States



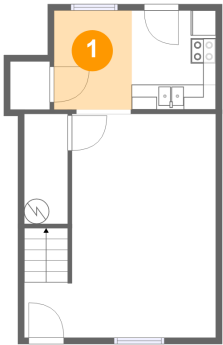
Room dimensions

Floor 2 Total:468sqft Excluded: 0sqft

#		Max Dimensions	sqft	Included
6	Bath	8'1" x 5'1"	41 sq. ft	Yes
7	W.I.C.	3'6" x 6'5"	22 sq. ft	Yes
8	Bedroom	13'0" x 9'3"	119 sq. ft	Yes
9	Primary Bedroom	11'6" x 12'11"	148 sq. ft	Yes
10	Hall	6'10" x 5'1"	56 sq. ft	Yes

707 Bibb Street Northeast, Roanoke, Virginia 24012, United States

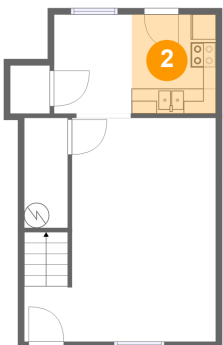
1 Floor 1 - Dining Area



Max Dimensions: 6'2" x 7'11"  
Calculated Area: 49 sq. ft  
Included: Yes

Heated: Yes  
Finished: Yes  
Enclosed: Yes  
Contiguous: Yes  
Permitted: Yes  
Wet space: No  
Addition: No  
Conversion: No

2 Floor 1 - Kitchen

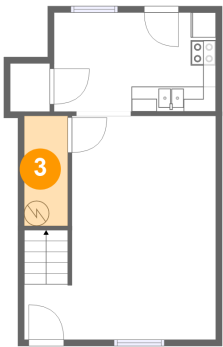


Max Dimensions: 6'8" x 7'10"  
Calculated Area: 53 sq. ft  
Included: Yes

Heated: Yes  
Finished: Yes  
Enclosed: Yes  
Contiguous: Yes  
Permitted: Yes  
Wet space: No  
Addition: No  
Conversion: No

707 Bibb Street Northeast, Roanoke, Virginia 24012, United States

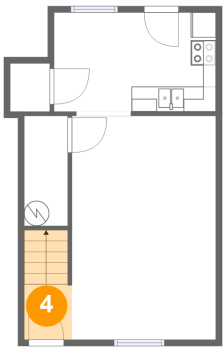
3 Floor 1 - Utility



Max Dimensions: 3'6" x 8'9"  
Calculated Area: 30 sq. ft  
Included: Yes

Heated: Yes  
Finished: Yes  
Enclosed: Yes  
Contiguous: Yes  
Permitted: Yes  
Wet space: No  
Addition: No  
Conversion: No

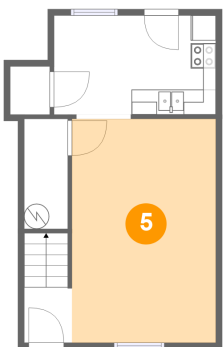
4 Floor 1 - Foyer



Max Dimensions: 3'10" x 4'5"  
Calculated Area: 32 sq. ft  
Included: Yes

Heated: Yes  
Finished: Yes  
Enclosed: Yes  
Contiguous: Yes  
Permitted: Yes  
Wet space: No  
Addition: No  
Conversion: No

5 Floor 1 - Living Room

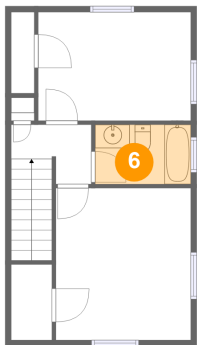


Max Dimensions: 11'6" x 17'10"  
Calculated Area: 204 sq. ft  
Included: Yes

Heated: Yes  
Finished: Yes  
Enclosed: Yes  
Contiguous: Yes  
Permitted: Yes  
Wet space: No  
Addition: No  
Conversion: No

707 Bibb Street Northeast, Roanoke, Virginia 24012, United States

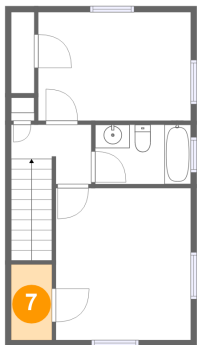
6 Floor 2 - Bath



Max Dimensions: 8'1" x 5'1"  
Calculated Area: 41 sq. ft  
Included: Yes

Heated: Yes  
Finished: Yes  
Enclosed: Yes  
Contiguous: Yes  
Permitted: Yes  
Wet space: Yes  
Addition: No  
Conversion: No

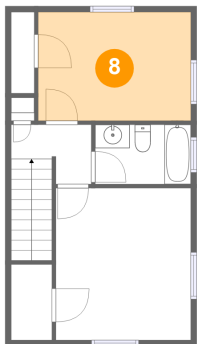
7 Floor 2 - W.I.C.



Max Dimensions: 3'6" x 6'5"  
Calculated Area: 22 sq. ft  
Included: Yes

Heated: Yes  
Finished: Yes  
Enclosed: Yes  
Contiguous: Yes  
Permitted: Yes  
Wet space: No  
Addition: No  
Conversion: No

8 Floor 2 - Bedroom

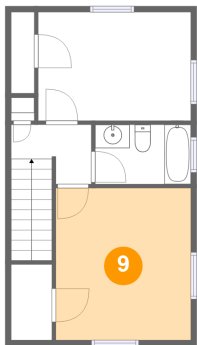


Max Dimensions: 13'0" x 9'3"  
Calculated Area: 119 sq. ft  
Included: Yes

Heated: Yes  
Finished: Yes  
Enclosed: Yes  
Contiguous: Yes  
Permitted: Yes  
Wet space: No  
Addition: No  
Conversion: No

707 Bibb Street Northeast, Roanoke, Virginia 24012, United States

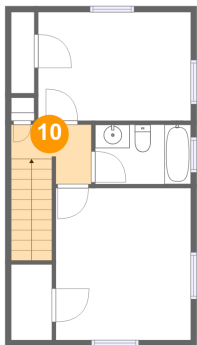
9 Floor 2 - Primary Bedroom



Max Dimensions: 11'6" x 12'11"  
Calculated Area: 148 sq. ft  
Included: Yes

Heated: Yes  
Finished: Yes  
Enclosed: Yes  
Contiguous: Yes  
Permitted: Yes  
Wet space: No  
Addition: No  
Conversion: No

10 Floor 2 - Hall



Max Dimensions: 6'10" x 5'1"  
Calculated Area: 56 sq. ft  
Included: Yes

Heated: Yes  
Finished: Yes  
Enclosed: Yes  
Contiguous: Yes  
Permitted: Yes  
Wet space: No  
Addition: No  
Conversion: No