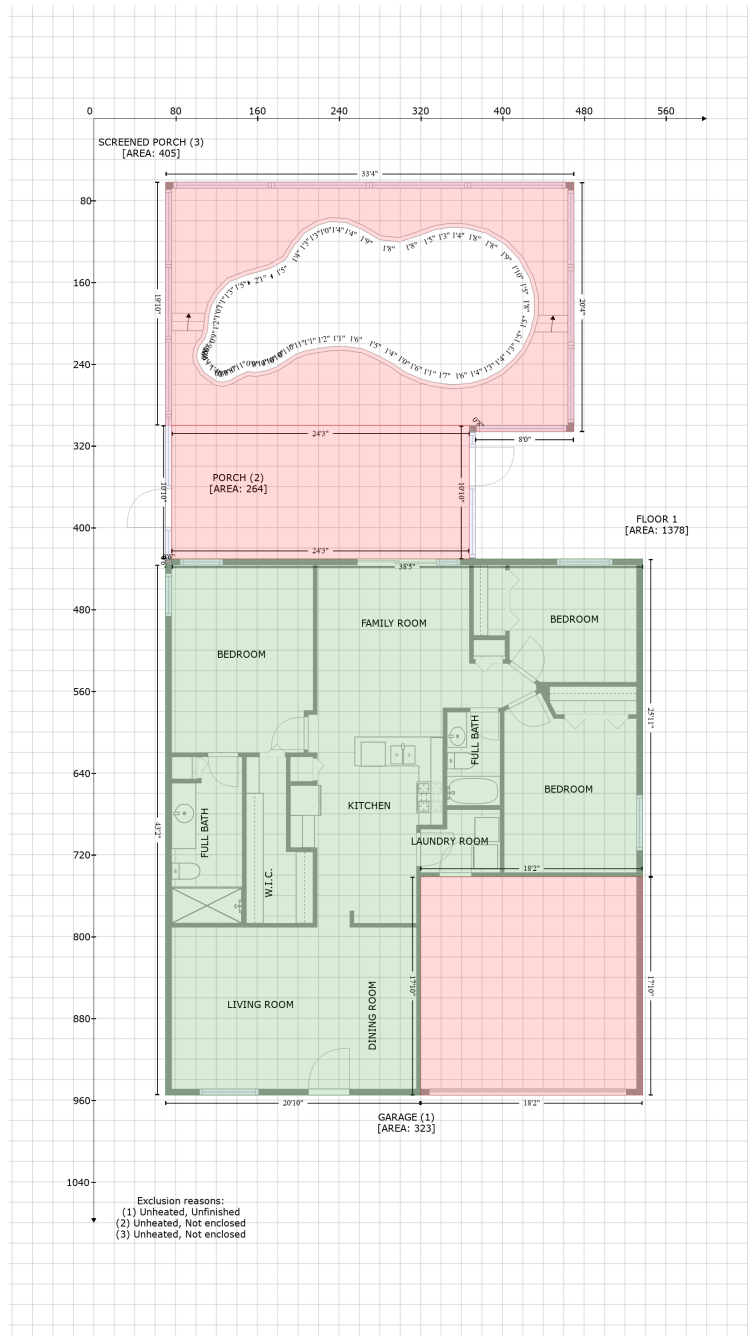


718 Somerstone Drive, Valrico, Hillsborough County, Florida, United States, 33594

Gross Living Area: 1378 sq. ft



Space	Area (sq. ft)	Calculation
FLOOR 1 (Living area)	1378	$-(537.4 + 537.4) * (430.8 - 741.5) + (537.4 + 319.9) * (741.5 - 741.5) + (319.9 + 319.9) * (741.5 - 955.2) + (319.9 + 70.2) * (955.2 - 955.2) + (70.2 + 70.2) * (955.2 - 436.8) + (70.2 + 76.2) * (436.8 - 436.8) + (76.2 + 76.2) * (436.8 - 430.8) + (76.2 + 537.4) * (430.8 - 430.8) * 0.5 * 0.00694$
GARAGE (Non-living area)	323	$-(537.4 + 537.4) * (741.5 - 955.2) + (537.4 + 319.9) * (955.2 - 955.2) + (319.9 + 319.9) * (955.2 - 741.5) + (319.9 + 537.4) * (741.5 - 741.5) * 0.5 * 0.00694$
PORCH	264	$-(367.7 + 367.7) * (300.3 - 430.8) + (367.7 + 76.2) * (430.8 - 430.8) + (76.2 + 76.2) * (430.8 -$

718 Somerstone Drive, Valrico, Hillsborough County, Florida, United States, 33594

Gross Living Area: 1378 sq. ft

Space	Area (sq. ft)	Calculation <small>Coordinate Polygon Area Algorithm using inches</small>
(Non-living area)		$300.3 + (76.2 + 367.7) * (300.3 - 300.3) * 0.5 * 0.00694$
SCREENED PORCH (Non-living area)	405	$-(70.2 + 470.1) * (62.1 - 62.1) + (470.1 + 470.1) * (62.1 - 306.3) + (470.1 + 373.7) * (306.3 - 306.3) + (373.7 + 367.7) * (306.3 - 300.3) + (367.7 + 70.2) * (300.3 - 300.3) + (70.2 + 70.2) * (300.3 - 62.1) * 0.5 * 0.00694 + -((231 + 219.2) * (100.9 - 104.2) + (219.2 + 206.4) * (104.2 - 112) + (206.4 + 196.4) * (112 - 123.8) + (196.4 + 187.8) * (123.8 - 137.8) + (187.8 + 172.8) * (137.8 - 146.5) + (172.8 + 149.2) * (146.5 - 153.2) + (149.2 + 133) * (153.2 - 159.4) + (133 + 122.2) * (159.4 - 170.5) + (122.2 + 115.6) * (170.5 - 181.7) + (115.6 + 112.5) * (181.7 - 193.3) + (112.5 + 111.4) * (193.3 - 206.9) + (111.4 + 108.6) * (206.9 - 215.8) + (108.6 + 104.5) * (215.8 - 220.7) + (104.5 + 101.7) * (220.7 - 226.2) + (101.7 + 100.9) * (226.2 - 231.2) + (100.9 + 101.3) * (231.2 - 236.8) + (101.3 + 107.6) * (236.8 - 247.8) + (107.6 + 120.4) * (247.8 - 257.2) + (120.4 + 126.4) * (257.2 - 257.8) + (126.4 + 133.4) * (257.8 - 256) + (133.4 + 140.5) * (256 - 252.2) + (140.5 + 150.1) * (252.2 - 247.5) + (150.1 + 158.6) * (247.5 - 248.2) + (158.6 + 169.9) * (248.2 - 246.3) + (169.9 + 179.3) * (246.3 - 242.6) + (179.3 + 187.8) * (242.6 - 237) + (187.8 + 196.9) * (237 - 231) + (196.9 + 206.9) * (231 - 227.1) + (206.9 + 219.3) * (227.1 - 224.9) + (219.3 + 233.4) * (224.9 - 223) + (233.4 + 246.5) * (223 - 222.8) + (246.5 + 263.8) * (222.8 - 225.3) + (263.8 + 279.6) * (225.3 - 232.5) + (279.6 + 293.7) * (232.5 - 240.3) + (293.7 + 303.8) * (240.3 - 247.5) + (303.8 + 320) * (247.5 - 254.6) + (320 + 332.9) * (254.6 - 258.1) + (332.9 + 351.5) * (258.1 - 260.5) + (351.5 + 369.3) * (260.5 - 258.7) + (369.3 + 384.4) * (258.7 - 254.2) + (384.4 + 397.7) * (254.2 - 247.1) + (397.7 + 409.8) * (247.1 - 236.6) + (409.8 + 419.7) * (236.6 - 224.8) + (419.7 + 427.1) * (224.8 - 209.1) + (427.1 + 431.3) * (209.1 - 192.8) + (431.3 + 431.1) * (192.8 - 172.9) + (431.1 + 426.9) * (172.9 - 156.7) + (426.9 + 416.2) * (156.7 - 137.1) + (416.2 + 401.6) * (137.1 - 122.2) + (401.6 + 384.1) * (122.2 - 112) + (384.1 + 365) * (112 - 107.1) + (365 + 349.1) * (107.1 - 106.3) + (349.1 + 334.2) * (106.3 - 108.7) + (334.2 + 318.2) * (108.7 - 114.5) + (318.2 + 299.1) * (114.5 - 120.6) + (299.1 + 279.6) * (120.6 - 118.4) + (279.6 + 261.6) * (118.4 - 107.9) + (261.6 + 246.9) * (107.9 - 101.7) + (246.9 + 231) * (101.7 - 100.9) * 0.5 * 0.00694$