


5279 FM 2109, Huntington, TX, US



FLOOR 1

Property summary

 **0** Garages

 **3** Bedrooms

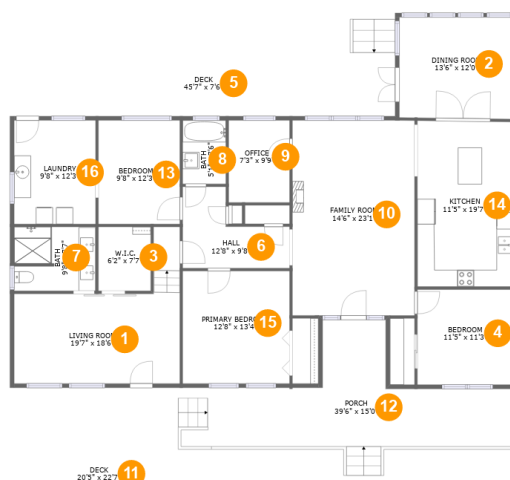
 **2** Bathrooms

 **0** Half baths

 **1** Floors

 **2,051** Gross living area sqft

 **3,185** Total sqft

5279 FM 2109, Huntington, TX, US**Room dimensions****Floor 1****Total sqft: 3185 Living area: 2051**

#		Dimensions	sqft	Counted as living area
1	Living Room	19'7" x 18'6"	233 sq. ft	Yes
2	Dining Room	13'6" x 12'0"	162 sq. ft	Yes
3	W.I.C.	6'2" x 7'7"	47 sq. ft	Yes
4	Bedroom	11'5" x 11'3"	128 sq. ft	Yes
5	Deck	45'7" x 7'6"	342 sq. ft	No
6	Hall	12'8" x 9'8"	86 sq. ft	Yes
7	Bath	9'8" x 7'7"	71 sq. ft	Yes
8	Bath	5'1" x 7'6"	38 sq. ft	Yes
9	Office	7'3" x 9'9"	70 sq. ft	Yes
10	Family Room	14'6" x 23'1"	334 sq. ft	Yes
11	Deck	20'5" x 22'7"	475 sq. ft	No

5279 FM 2109,Huntington,TX,US

#		Dimensions	sqft	Counted as living area
12	Porch	39'6" x 15'0"	317 sq. ft	No
13	Bedroom	9'8" x 12'3"	118 sq. ft	Yes
14	Kitchen	11'5" x 19'7"	223 sq. ft	Yes
15	Primary Bedroom	12'8" x 13'4"	169 sq. ft	Yes
16	Laundry	9'8" x 12'3"	118 sq. ft	Yes

1 Floor 1 - Living Room



Dimensions: 19'7" x 18'6"
Area: 233 sq. ft
Counted as living area: Yes

Heated: Yes
Finished: Yes
Enclosed: Yes
Contiguous: Yes
Permitted: Yes
Wet space: No
Addition: No
Conversion: No

2 Floor 1 - Dining Room



Dimensions: 13'6" x 12'0"
Area: 162 sq. ft
Counted as living area: Yes

Heated: Yes
Finished: Yes
Enclosed: Yes
Contiguous: Yes
Permitted: Yes
Wet space: No
Addition: No
Conversion: No

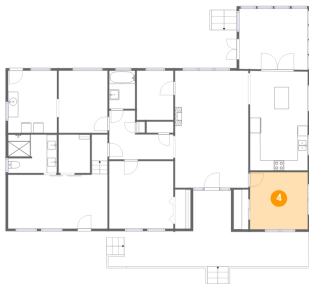
3 Floor 1 - W.I.C.



Dimensions: 6'2" x 7'7"
Area: 47 sq. ft
Counted as living area: Yes

Heated: Yes
Finished: Yes
Enclosed: Yes
Contiguous: Yes
Permitted: Yes
Wet space: No
Addition: No
Conversion: No

4 Floor 1 - Bedroom



Dimensions: 11'5" x 11'3"
Area: 128 sq. ft
Counted as living area: Yes

Heated: Yes
Finished: Yes
Enclosed: Yes
Contiguous: Yes
Permitted: Yes
Wet space: No
Addition: No
Conversion: No

5 Floor 1 - Deck



Dimensions: 45'7" x 7'6"
Area: 342 sq. ft
Counted as living area: No

Heated: No
Finished: Yes
Enclosed: No
Contiguous: Yes
Permitted: Yes
Wet space: No
Addition: No
Conversion: No

6 Floor 1 - Hall



Dimensions: 12'8" x 9'8"
Area: 86 sq. ft
Counted as living area: Yes

Heated: Yes
Finished: Yes
Enclosed: Yes
Contiguous: Yes
Permitted: Yes
Wet space: No
Addition: No
Conversion: No

7 Floor 1 - Bath



Dimensions: 9'8" x 7'7"
Area: 71 sq. ft
Counted as living area: Yes

Heated: Yes
Finished: Yes
Enclosed: Yes
Contiguous: Yes
Permitted: Yes
Wet space: Yes
Addition: No
Conversion: No

8 Floor 1 - Bath



Dimensions: 5'1" x 7'6"
Area: 38 sq. ft
Counted as living area: Yes

Heated: Yes
Finished: Yes
Enclosed: Yes
Contiguous: Yes
Permitted: Yes
Wet space: Yes
Addition: No
Conversion: No

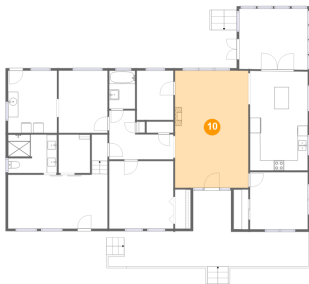
9 Floor 1 - Office



Dimensions: 7'3" x 9'9"
Area: 70 sq. ft
Counted as living area: Yes

Heated: Yes
Finished: Yes
Enclosed: Yes
Contiguous: Yes
Permitted: Yes
Wet space: No
Addition: No
Conversion: No

10 Floor 1 - Family Room



Dimensions: 14'6" x 23'1"
Area: 334 sq. ft
Counted as living area: Yes

Heated: Yes
Finished: Yes
Enclosed: Yes
Contiguous: Yes
Permitted: Yes
Wet space: No
Addition: No
Conversion: No

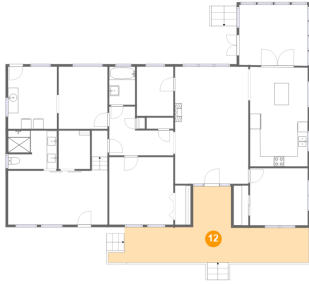
11 Floor 1 - Deck



Dimensions: 20'5" x 22'7"
Area: 475 sq. ft
Counted as living area: No

Heated: No
Finished: Yes
Enclosed: No
Contiguous: Yes
Permitted: Yes
Wet space: No
Addition: No
Conversion: No

12 Floor 1 - Porch



Dimensions: 39'6" x 15'0"
Area: 317 sq. ft
Counted as living area: No

Heated: No
Finished: Yes
Enclosed: No
Contiguous: Yes
Permitted: Yes
Wet space: No
Addition: No
Conversion: No

13 Floor 1 - Bedroom



Dimensions: 9'8" x 12'3"
Area: 118 sq. ft
Counted as living area: Yes

Heated: Yes
Finished: Yes
Enclosed: Yes
Contiguous: Yes
Permitted: Yes
Wet space: No
Addition: No
Conversion: No

14 Floor 1 - Kitchen



Dimensions: 11'5" x 19'7"
Area: 223 sq. ft
Counted as living area: Yes

Heated: Yes
Finished: Yes
Enclosed: Yes
Contiguous: Yes
Permitted: Yes
Wet space: No
Addition: No
Conversion: No

15 Floor 1 - Primary Bedroom



Dimensions: 12'8" x 13'4"
Area: 169 sq. ft
Counted as living area: Yes

Heated: Yes
Finished: Yes
Enclosed: Yes
Contiguous: Yes
Permitted: Yes
Wet space: No
Addition: No
Conversion: No

16 Floor 1 - Laundry



Dimensions: 9'8" x 12'3"
Area: 118 sq. ft
Counted as living area: Yes

Heated: Yes
Finished: Yes
Enclosed: Yes
Contiguous: Yes
Permitted: Yes
Wet space: No
Addition: No
Conversion: No