

Home report

2027 River Ridge Court, Woodbridge, Salem, Roanoke County,
Virginia, United States, 24153




Total Area: 2244 sq. ft

Floor 1: 1679 sq. ft, Floor 2: 565 sq. ft

Excluded: Patio 102 sq. ft, Screened porch 102 sq. ft, Porch 108 sq. ft, Garage 459 sq. ft, Utility 24 sq. ft, Storage 98 sq. ft, Walls: 200 sq. ft

Property summary

 2 Floors

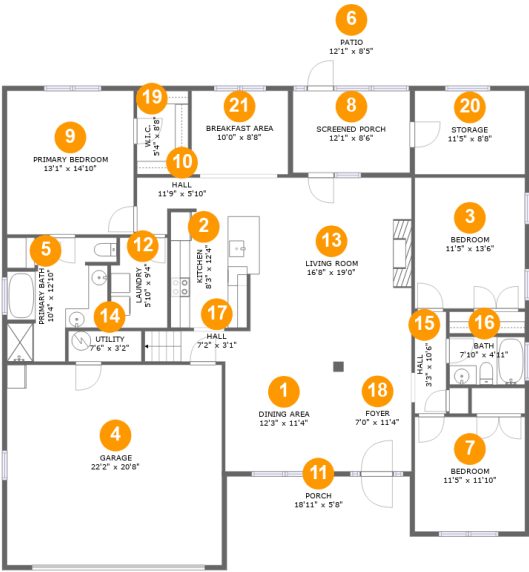
 5 Bedrooms

 3 Bathrooms

 1 Garages

Home report

2027 River Ridge Court, Woodbridge, Salem, Roanoke County, Virginia, United States, 24153



Room dimensions

Floor 1 Total:1679sqft Excluded: 893sqft

#		Max Dimensions	sqft	Included
1	Dining Area	12'3" x 11'4"	139 sq. ft	Yes
2	Kitchen	8'3" x 12'4"	99 sq. ft	Yes
3	Bedroom	11'5" x 13'6"	154 sq. ft	Yes
4	Garage	22'2" x 20'8"	459 sq. ft	No
5	Primary Bath	10'4" x 12'10"	107 sq. ft	Yes
6	Patio	12'1" x 8'5"	102 sq. ft	No
7	Bedroom	11'5" x 11'10"	135 sq. ft	Yes
8	Screened Porch	12'1" x 8'6"	102 sq. ft	No
9	Primary Bedroom	13'1" x 14'10"	194 sq. ft	Yes
10	Hall	11'9" x 5'10"	47 sq. ft	Yes
11	Porch	18'11" x 5'8"	108 sq. ft	No

Home report

**2027 River Ridge Court, Woodbridge, Salem, Roanoke County,
Virginia, United States, 24153**

#		Max Dimensions	sqft	Included
12	Laundry	5'10" x 9'4"	52 sq. ft	Yes
13	Living Room	16'8" x 19'0"	316 sq. ft	Yes
14	Utility	7'6" x 3'2"	24 sq. ft	No
15	Hall	3'3" x 10'6"	34 sq. ft	Yes
16	Bath	7'10" x 4'11"	39 sq. ft	Yes
17	Hall	7'2" x 3'1"	34 sq. ft	Yes
18	Foyer	7'0" x 11'4"	80 sq. ft	Yes
19	W.I.C.	5'4" x 8'8"	46 sq. ft	Yes
20	Storage	11'5" x 8'8"	98 sq. ft	No
21	Breakfast Area	10'0" x 8'8"	86 sq. ft	Yes

2027 River Ridge Court, Woodbridge, Salem, Roanoke County,
Virginia, United States, 24153



Room dimensions

Floor 2 Total:565sqft Excluded: 0sqft

#		Max Dimensions	sqft	Included
22	Bedroom	11'9" x 24'6"	270 sq. ft	Yes
23	Bedroom	11'9" x 14'8"	153 sq. ft	Yes
24	Hall	4'3" x 13'0"	67 sq. ft	Yes
25	Bath	7'2" x 8'4"	40 sq. ft	Yes

2027 River Ridge Court, Woodbridge, Salem, Roanoke County,
Virginia, United States, 24153

1 Floor 1 - Dining Area



Max Dimensions: 12'3" x 11'4"
Calculated Area: 139 sq. ft
Included: Yes

Heated: Yes
Finished: Yes
Enclosed: Yes
Contiguous: Yes
Permitted: Yes
Wet space: No
Addition: No
Conversion: No

2 Floor 1 - Kitchen

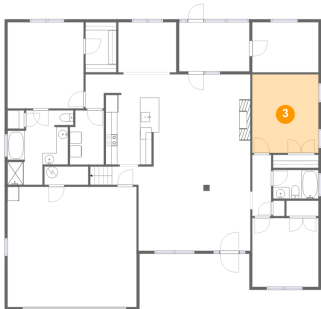


Max Dimensions: 8'3" x 12'4"
Calculated Area: 99 sq. ft
Included: Yes

Heated: Yes
Finished: Yes
Enclosed: Yes
Contiguous: Yes
Permitted: Yes
Wet space: No
Addition: No
Conversion: No

2027 River Ridge Court, Woodbridge, Salem, Roanoke County,
Virginia, United States, 24153

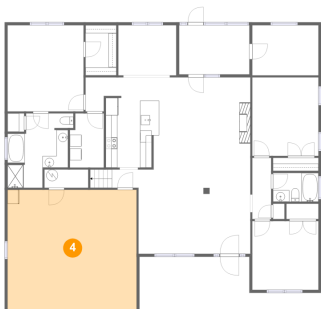
3 Floor 1 - Bedroom



Max Dimensions: 11'5" x 13'6"
Calculated Area: 154 sq. ft
Included: Yes

Heated: Yes
Finished: Yes
Enclosed: Yes
Contiguous: Yes
Permitted: Yes
Wet space: No
Addition: No
Conversion: No

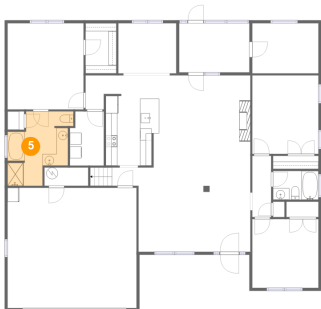
4 Floor 1 - Garage



Max Dimensions: 22'2" x 20'8"
Calculated Area: 459 sq. ft
Included: No

Heated: No
Finished: No
Enclosed: Yes
Contiguous: Yes
Permitted: Yes
Wet space: No
Addition: No
Conversion: No

5 Floor 1 - Primary Bath

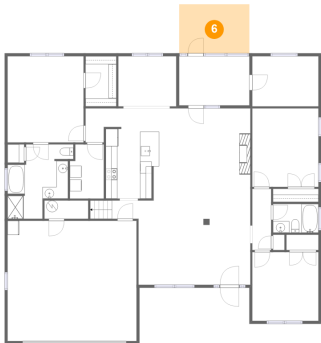


Max Dimensions: 10'4" x 12'10"
Calculated Area: 107 sq. ft
Included: Yes

Heated: Yes
Finished: Yes
Enclosed: Yes
Contiguous: Yes
Permitted: Yes
Wet space: Yes
Addition: No
Conversion: No

2027 River Ridge Court, Woodbridge, Salem, Roanoke County,
Virginia, United States, 24153

6 Floor 1 - Patio



Max Dimensions: 12'1" x 8'5"
Calculated Area: 102 sq. ft
Included: No

Heated: No
Finished: Yes
Enclosed: No
Contiguous: Yes
Permitted: Yes
Wet space: No
Addition: No
Conversion: No

7 Floor 1 - Bedroom



Max Dimensions: 11'5" x 11'10"
Calculated Area: 135 sq. ft
Included: Yes

Heated: Yes
Finished: Yes
Enclosed: Yes
Contiguous: Yes
Permitted: Yes
Wet space: No
Addition: No
Conversion: No

8 Floor 1 - Screened Porch

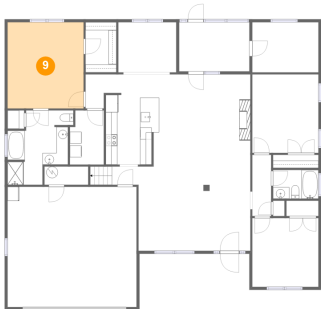


Max Dimensions: 12'1" x 8'6"
Calculated Area: 102 sq. ft
Included: No

Heated: No
Finished: Yes
Enclosed: No
Contiguous: Yes
Permitted: Yes
Wet space: No
Addition: No
Conversion: No

2027 River Ridge Court, Woodbridge, Salem, Roanoke County,
Virginia, United States, 24153

9 Floor 1 - Primary Bedroom



Max Dimensions: 13'1" x 14'10"
Calculated Area: 194 sq. ft
Included: Yes

Heated: Yes
Finished: Yes
Enclosed: Yes
Contiguous: Yes
Permitted: Yes
Wet space: No
Addition: No
Conversion: No

10 Floor 1 - Hall



Max Dimensions: 11'9" x 5'10"
Calculated Area: 47 sq. ft
Included: Yes

Heated: Yes
Finished: Yes
Enclosed: Yes
Contiguous: Yes
Permitted: Yes
Wet space: No
Addition: No
Conversion: No

11 Floor 1 - Porch



Max Dimensions: 18'11" x 5'8"
Calculated Area: 108 sq. ft
Included: No

Heated: No
Finished: Yes
Enclosed: No
Contiguous: Yes
Permitted: Yes
Wet space: No
Addition: No
Conversion: No

2027 River Ridge Court, Woodbridge, Salem, Roanoke County,
Virginia, United States, 24153

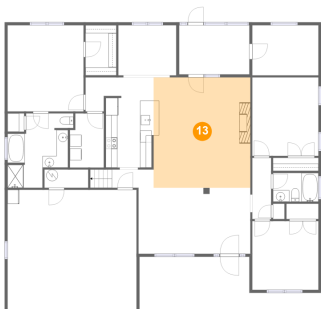
12 Floor 1 - Laundry



Max Dimensions: 5'10" x 9'4"
Calculated Area: 52 sq. ft
Included: Yes

Heated: Yes
Finished: Yes
Enclosed: Yes
Contiguous: Yes
Permitted: Yes
Wet space: No
Addition: No
Conversion: No

13 Floor 1 - Living Room



Max Dimensions: 16'8" x 19'0"
Calculated Area: 316 sq. ft
Included: Yes

Heated: Yes
Finished: Yes
Enclosed: Yes
Contiguous: Yes
Permitted: Yes
Wet space: No
Addition: No
Conversion: No

14 Floor 1 - Utility



Max Dimensions: 7'6" x 3'2"
Calculated Area: 24 sq. ft
Included: No

Heated: Yes
Finished: No
Enclosed: Yes
Contiguous: Yes
Permitted: Yes
Wet space: No
Addition: No
Conversion: No

2027 River Ridge Court, Woodbridge, Salem, Roanoke County,
Virginia, United States, 24153

15 Floor 1 - Hall



Max Dimensions: 3'3" x 10'6"
Calculated Area: 34 sq. ft
Included: Yes

Heated: Yes
Finished: Yes
Enclosed: Yes
Contiguous: Yes
Permitted: Yes
Wet space: No
Addition: No
Conversion: No

16 Floor 1 - Bath



Max Dimensions: 7'10" x 4'11"
Calculated Area: 39 sq. ft
Included: Yes

Heated: Yes
Finished: Yes
Enclosed: Yes
Contiguous: Yes
Permitted: Yes
Wet space: Yes
Addition: No
Conversion: No

17 Floor 1 - Hall



Max Dimensions: 7'2" x 3'1"
Calculated Area: 34 sq. ft
Included: Yes

Heated: Yes
Finished: Yes
Enclosed: Yes
Contiguous: Yes
Permitted: Yes
Wet space: No
Addition: No
Conversion: No

2027 River Ridge Court, Woodbridge, Salem, Roanoke County,
Virginia, United States, 24153

18 Floor 1 - Foyer



Max Dimensions: 7'0" x 11'4"
Calculated Area: 80 sq. ft
Included: Yes

Heated: Yes
Finished: Yes
Enclosed: Yes
Contiguous: Yes
Permitted: Yes
Wet space: No
Addition: No
Conversion: No

19 Floor 1 - W.I.C.



Max Dimensions: 5'4" x 8'8"
Calculated Area: 46 sq. ft
Included: Yes

Heated: Yes
Finished: Yes
Enclosed: Yes
Contiguous: Yes
Permitted: Yes
Wet space: No
Addition: No
Conversion: No

20 Floor 1 - Storage



Max Dimensions: 11'5" x 8'8"
Calculated Area: 98 sq. ft
Included: No

Heated: No
Finished: No
Enclosed: No
Contiguous: Yes
Permitted: Yes
Wet space: No
Addition: No
Conversion: No

2027 River Ridge Court, Woodbridge, Salem, Roanoke County,
Virginia, United States, 24153

21 Floor 1 - Breakfast Area



Max Dimensions: 10'0" x 8'8"
Calculated Area: 86 sq. ft
Included: Yes

Heated: Yes
Finished: Yes
Enclosed: Yes
Contiguous: Yes
Permitted: Yes
Wet space: No
Addition: No
Conversion: No

22 Floor 2 - Bedroom



Max Dimensions: 11'9" x 24'6"
Calculated Area: 270 sq. ft
Included: Yes

Heated: Yes
Finished: Yes
Enclosed: Yes
Contiguous: Yes
Permitted: Yes
Wet space: No
Addition: No
Conversion: No

23 Floor 2 - Bedroom



Max Dimensions: 11'9" x 14'8"
Calculated Area: 153 sq. ft
Included: Yes

Heated: Yes
Finished: Yes
Enclosed: Yes
Contiguous: Yes
Permitted: Yes
Wet space: No
Addition: No
Conversion: No

2027 River Ridge Court, Woodbridge, Salem, Roanoke County,
Virginia, United States, 24153

24 Floor 2 - Hall



Max Dimensions: 4'3" x 13'0"
Calculated Area: 67 sq. ft
Included: Yes

Heated: Yes
Finished: Yes
Enclosed: Yes
Contiguous: Yes
Permitted: Yes
Wet space: No
Addition: No
Conversion: No

25 Floor 2 - Bath



Max Dimensions: 7'2" x 8'4"
Calculated Area: 40 sq. ft
Included: Yes

Heated: Yes
Finished: Yes
Enclosed: Yes
Contiguous: Yes
Permitted: Yes
Wet space: Yes
Addition: No
Conversion: No