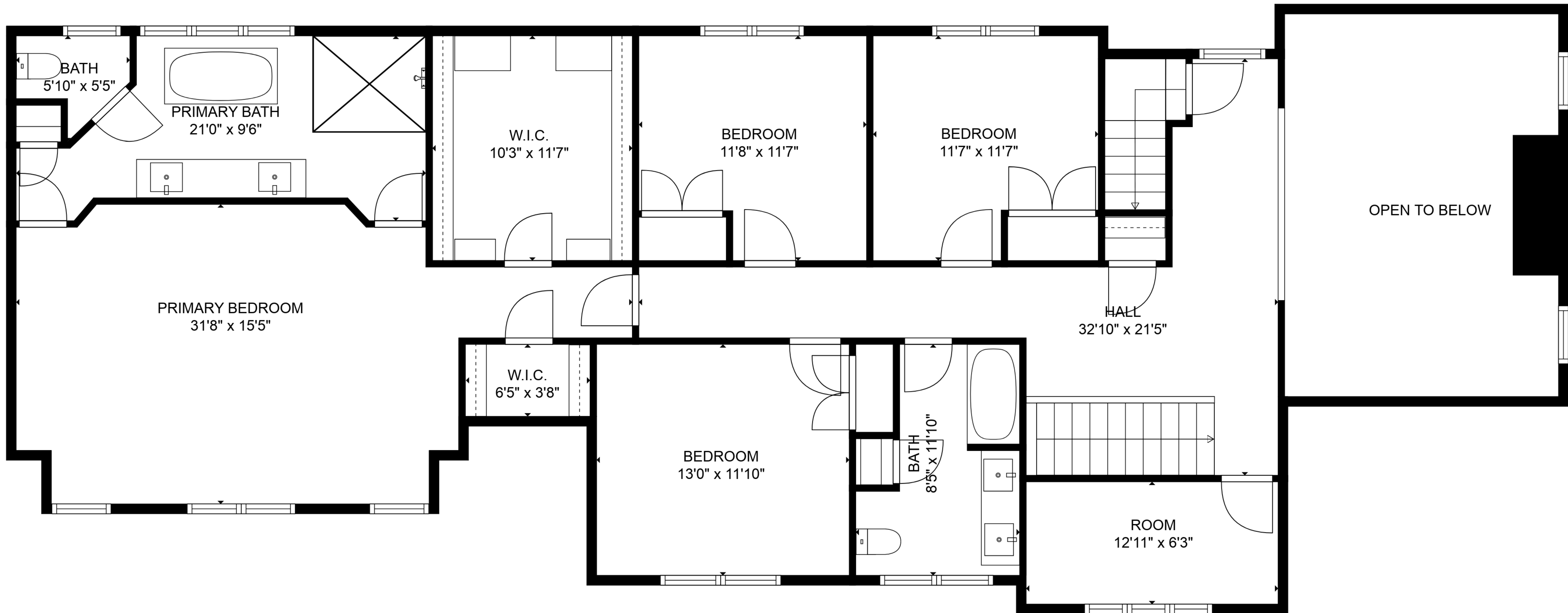


TOTAL: 3619 sq. ft

BELOW GROUND: 1426 sq. ft, FLOOR 2: 1655 sq. ft, FLOOR 3: 538 sq. ft
 EXCLUDED AREAS: OPEN TO BELOW: 276 sq. ft, LOW CEILING: 13 sq. ft, ATTIC: 29 sq. ft



Floor Plans are provided by HouseSnappers.com. Measurements are deemed highly reliable but not guaranteed.



TOTAL: 3619 sq. ft

BELOW GROUND: 1426 sq. ft, FLOOR 2: 1655 sq. ft, FLOOR 3: 538 sq. ft
 EXCLUDED AREAS: OPEN TO BELOW: 276 sq. ft, LOW CEILING: 13 sq. ft, ATTIC: 29 sq. ft



Floor Plans are provided by HouseSnappers.com. Measurements are deemed highly reliable but not guaranteed.

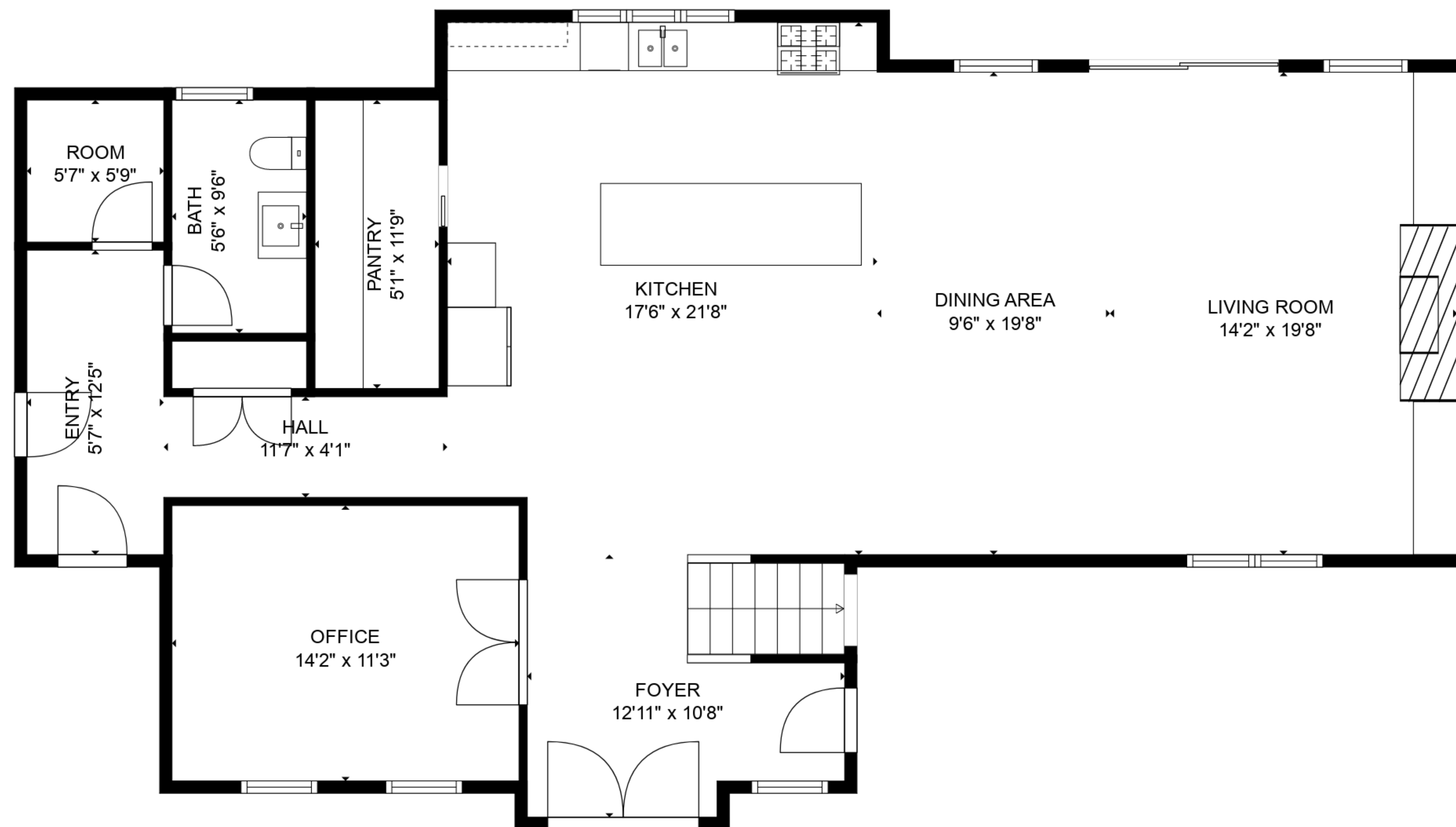
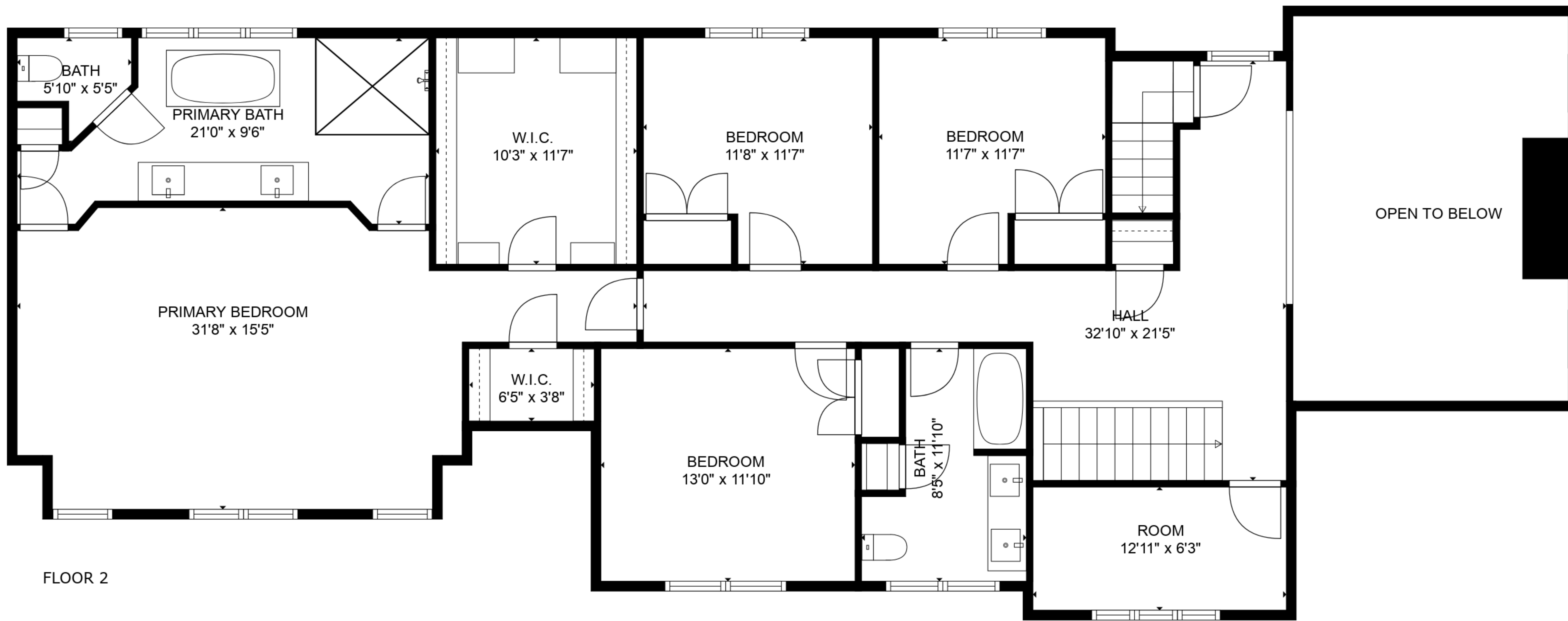


TOTAL: 3619 sq. ft

BELOW GROUND: 1426 sq. ft, FLOOR 2: 1655 sq. ft, FLOOR 3: 538 sq. ft
 EXCLUDED AREAS: OPEN TO BELOW: 276 sq. ft, LOW CEILING: 13 sq. ft, ATTIC: 29 sq. ft



Floor Plans are provided by HouseSnappers.com. Measurements are deemed highly reliable but not guaranteed.



TOTAL: 3619 sq. ft

BELOW GROUND: 1426 sq. ft, FLOOR 2: 1655 sq. ft, FLOOR 3: 538 sq. ft
 EXCLUDED AREAS: OPEN TO BELOW: 276 sq. ft, LOW CEILING: 13 sq. ft, ATTIC: 29 sq. ft



Floor Plans are provided by HouseSnappers.com. Measurements are deemed highly reliable but not guaranteed.