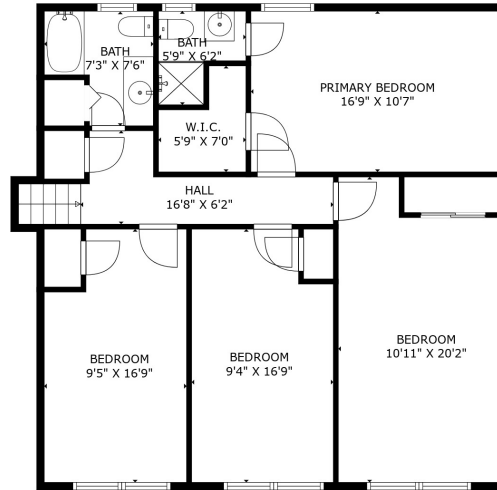
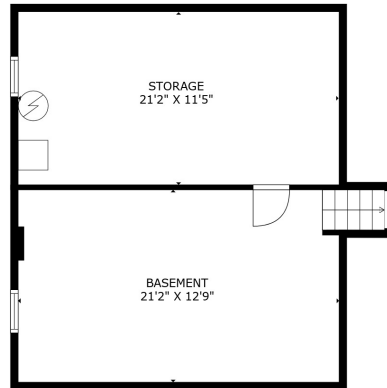


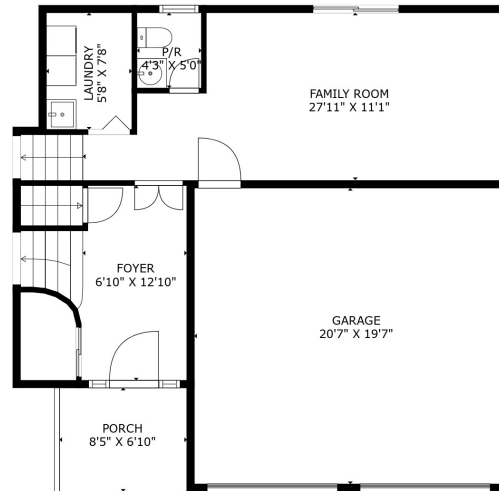
SECOND FLOOR



THIRD FLOOR



LOWER LEVEL

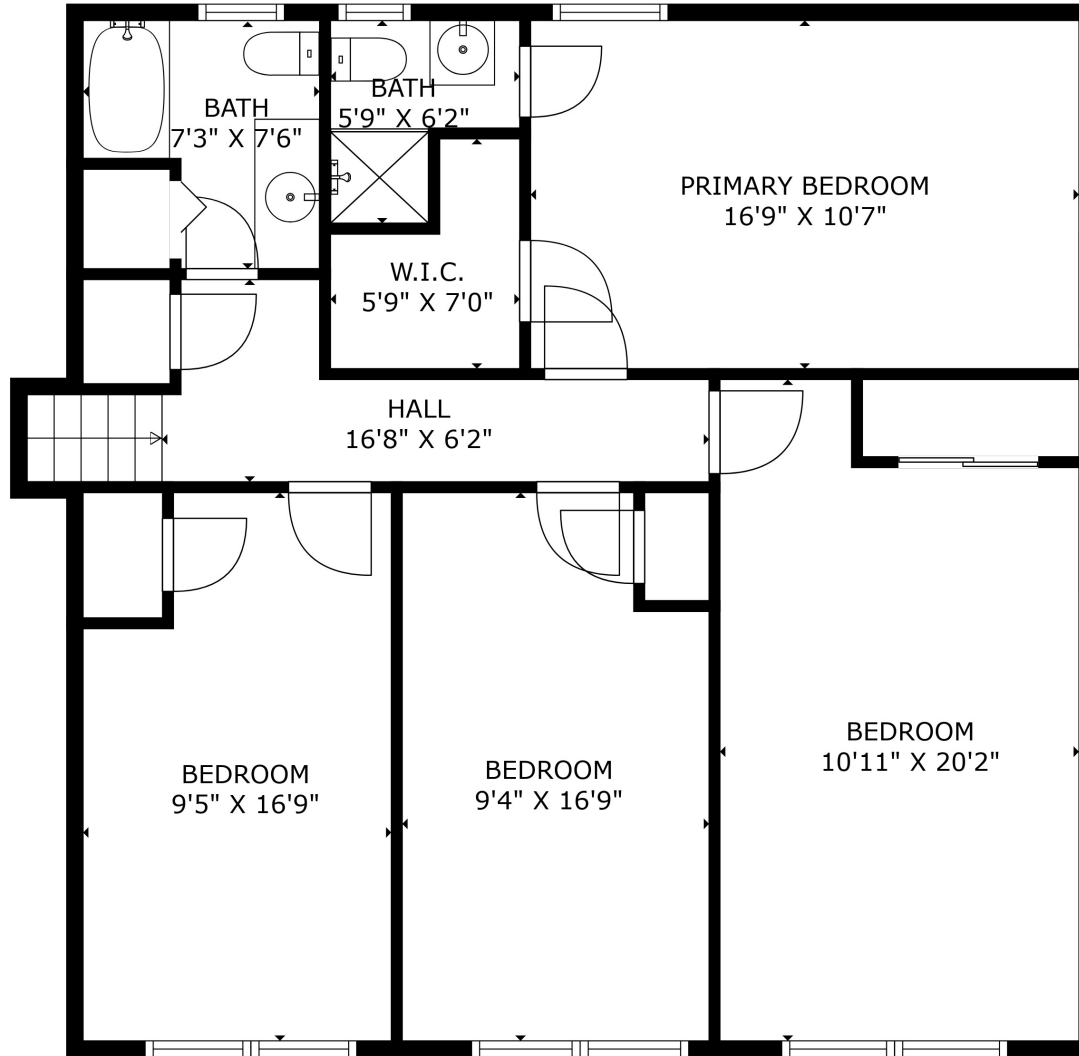


FIRST FLOOR

TOTAL: 2044 sq. ft

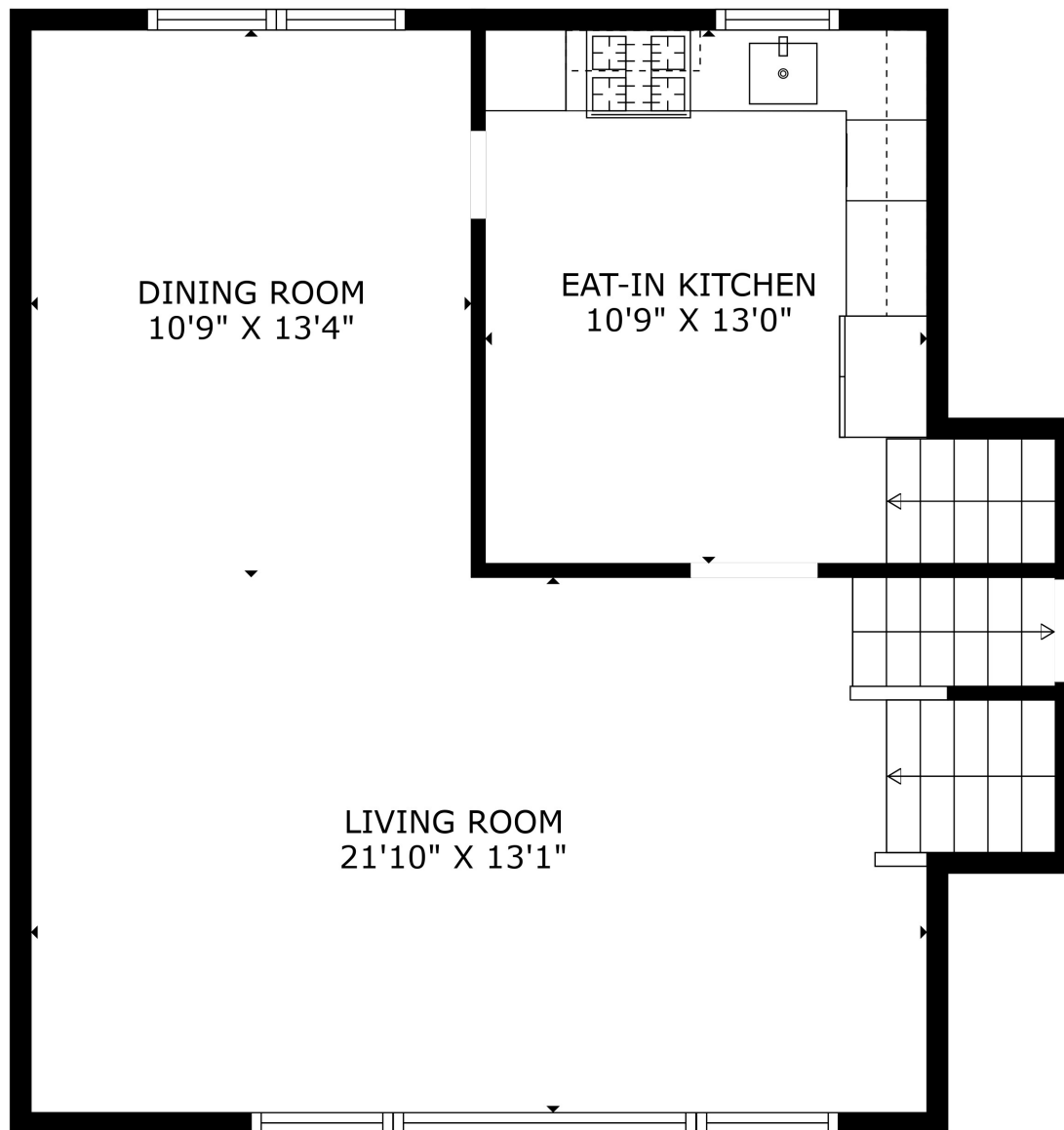
Below Ground: 0 sq. ft, FIRST FLOOR: 487 sq. ft, SECOND FLOOR: 607 sq. ft, THIRD FLOOR: 950 sq. ft
EXCLUDED AREAS: BASEMENT: 284 sq. ft, STORAGE: 242 sq. ft, GARAGE: 402 sq. ft, PORCH: 58 sq. ft

4 RUTGERS COURT, ROSELAND



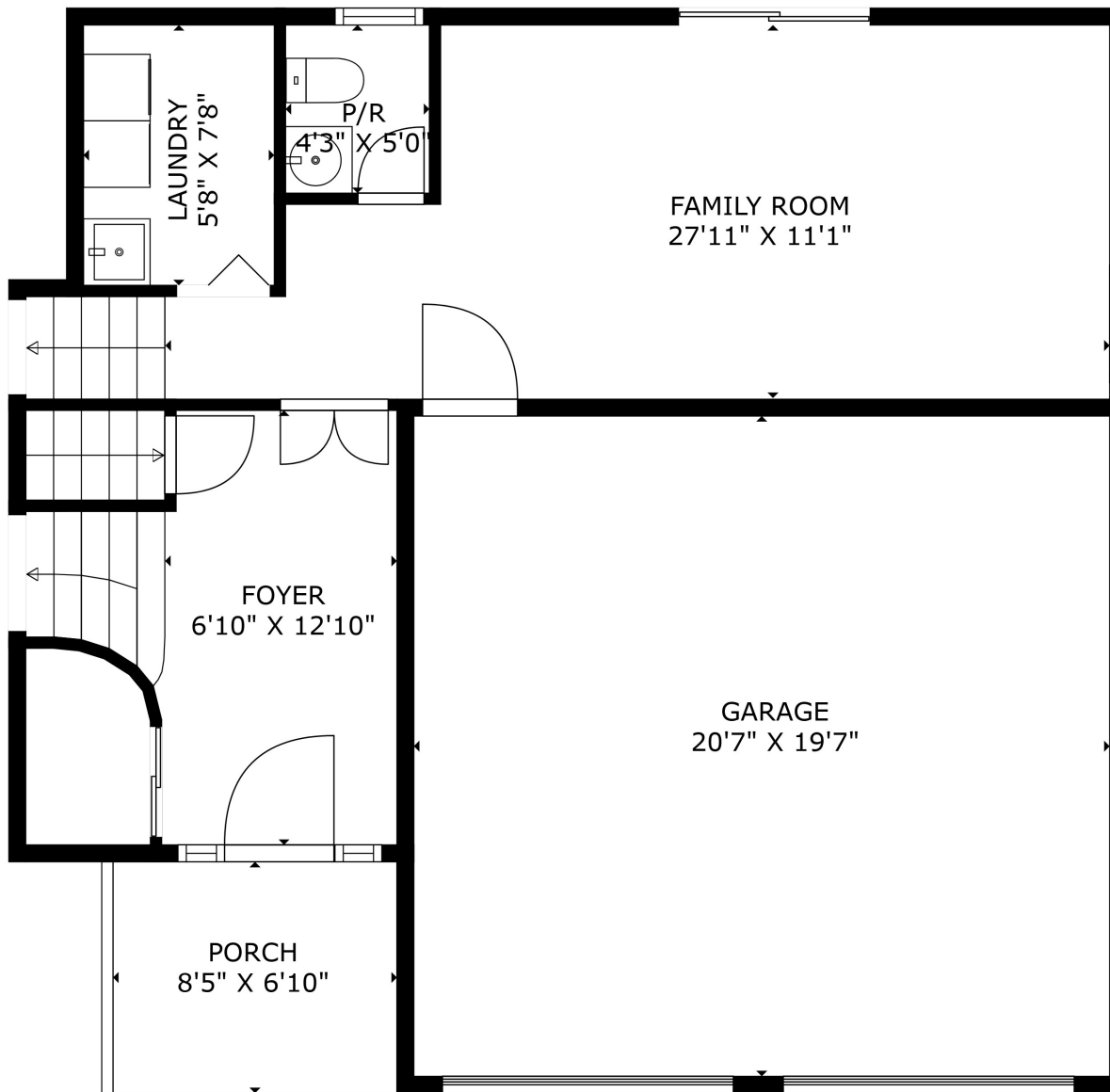
TOTAL: 2044 sq. ft

Below Ground: 0 sq. ft, FIRST FLOOR: 487 sq. ft, SECOND FLOOR: 607 sq. ft, THIRD FLOOR: 950 sq. ft
EXCLUDED AREAS: BASEMENT: 284 sq. ft, STORAGE: 242 sq. ft, GARAGE: 402 sq. ft,
PORCH: 58 sq. ft



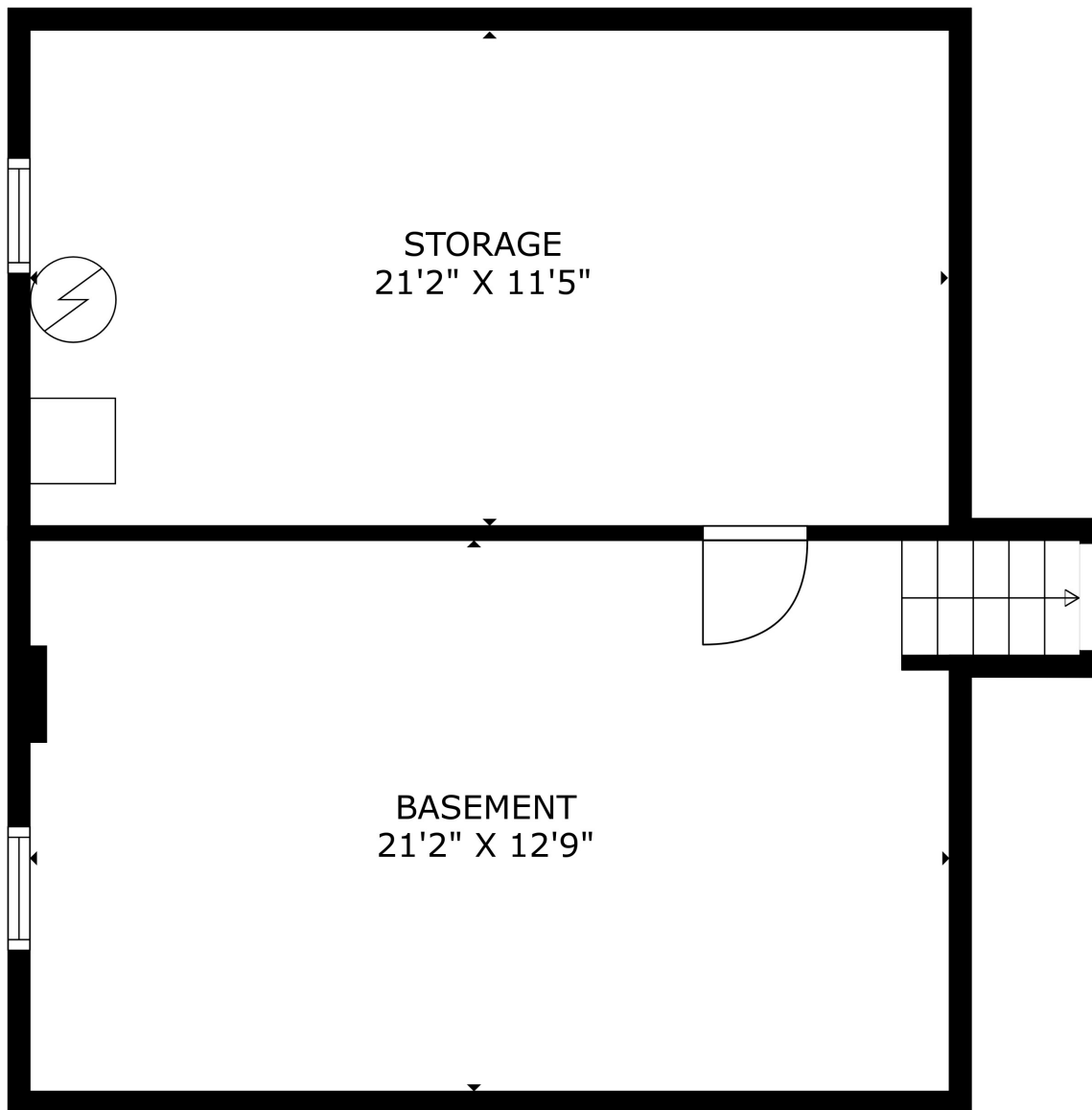
TOTAL: 2044 sq. ft

Below Ground: 0 sq. ft, FIRST FLOOR: 487 sq. ft, SECOND FLOOR: 607 sq. ft, THIRD FLOOR: 950 sq. ft
EXCLUDED AREAS: BASEMENT: 284 sq. ft, STORAGE: 242 sq. ft, GARAGE: 402 sq. ft,
PORCH: 58 sq. ft



TOTAL: 2044 sq. ft

Below Ground: 0 sq. ft, FIRST FLOOR: 487 sq. ft, SECOND FLOOR: 607 sq. ft, THIRD FLOOR: 950 sq. ft
EXCLUDED AREAS: BASEMENT: 284 sq. ft, STORAGE: 242 sq. ft, GARAGE: 402 sq. ft,
PORCH: 58 sq. ft



TOTAL: 2044 sq. ft

Below Ground: 0 sq. ft, FIRST FLOOR: 487 sq. ft, SECOND FLOOR: 607 sq. ft, THIRD FLOOR: 950 sq. ft

EXCLUDED AREAS: BASEMENT: 284 sq. ft, STORAGE: 242 sq. ft, GARAGE: 402 sq. ft,
PORCH: 58 sq. ft