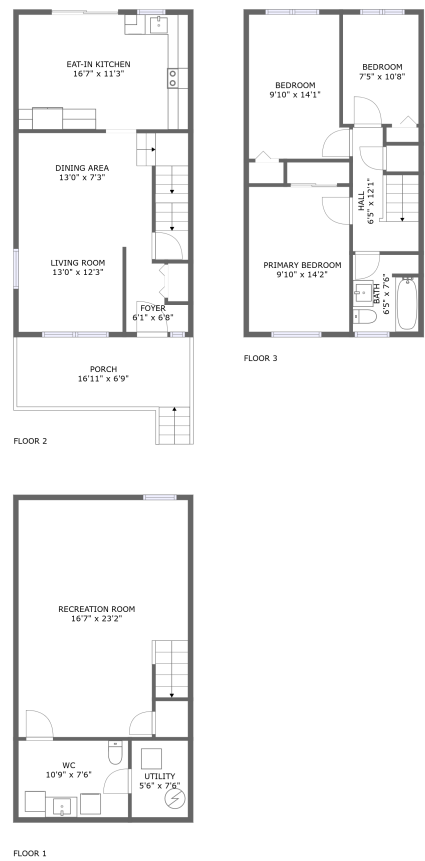



Home report

710 A Krosno Blvd,Pickering,ON,CA




Property summary




0

Garages




3

Bedrooms



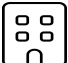
1

Bathrooms




1

Half baths




3

Floors



1,646

Gross living area sqft

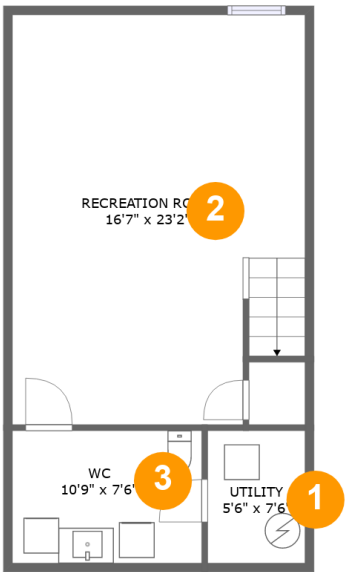


1,761

Total sqft

Home report

710 A Krosno Blvd,Pickering,ON,CA



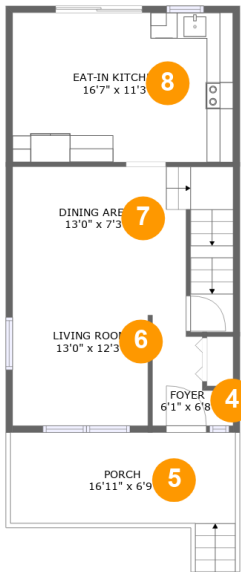
Room dimensions

Floor 1 Total sqft: 546 Living area: 546

#		Dimensions	sqft	Counted as living area
1	Utility	5'6" x 7'6"	41 sq. ft	Yes
2	Recreation Room	16'7" x 23'2"	369 sq. ft	Yes
3	WC	10'9" x 7'6"	80 sq. ft	Yes

Home report

710 A Krosno Blvd,Pickering,ON,CA



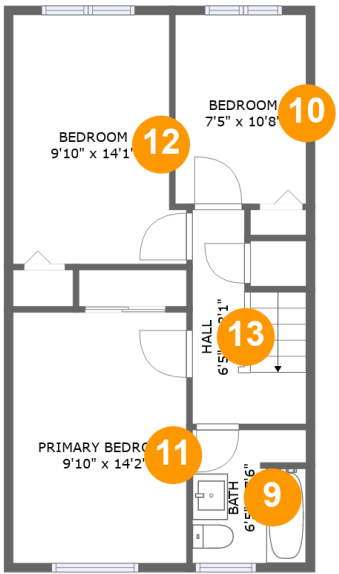
Room dimensions

Floor 2 Total sqft: 669 Living area: 554

#		Dimensions	sqft	Counted as living area
4	Foyer	6'1" x 6'8"	31 sq. ft	Yes
5	Porch	16'11" x 6'9"	115 sq. ft	No
6	Living Room	13'0" x 12'3"	140 sq. ft	Yes
7	Dining Area	13'0" x 7'3"	118 sq. ft	Yes
8	Eat-in Kitchen	16'7" x 11'3"	186 sq. ft	Yes

Home report

710 A Krosno Blvd,Pickering,ON,CA

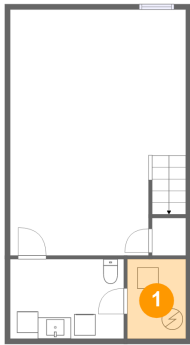


Room dimensions

Floor 3 Total sqft: 546 Living area: 546

#		Dimensions	sqft	Counted as living area
9	Bath	6'5" x 7'6"	48 sq. ft	Yes
10	Bedroom	7'5" x 10'8"	79 sq. ft	Yes
11	Primary Bedroom	9'10" x 14'2"	139 sq. ft	Yes
12	Bedroom	9'10" x 14'1"	128 sq. ft	Yes
13	Hall	6'5" x 12'1"	62 sq. ft	Yes

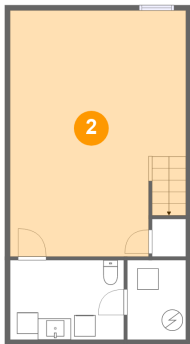
1 Floor 1 - Utility



Dimensions: 5'6" x 7'6"
Area: 41 sq. ft
Counted as living area: Yes

Heated: Yes
Finished: Yes
Enclosed: Yes
Contiguous: Yes
Permitted: Yes
Wet space: No
Addition: No
Conversion: No

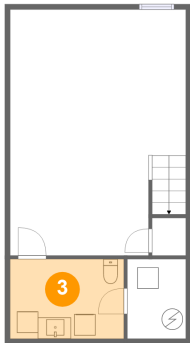
2 Floor 1 - Recreation Room



Dimensions: 16'7" x 23'2"
Area: 369 sq. ft
Counted as living area: Yes

Heated: Yes
Finished: Yes
Enclosed: Yes
Contiguous: Yes
Permitted: Yes
Wet space: No
Addition: No
Conversion: No

3 Floor 1 - WC



Dimensions: 10'9" x 7'6"
Area: 80 sq. ft
Counted as living area: Yes

Heated: Yes
Finished: Yes
Enclosed: Yes
Contiguous: Yes
Permitted: Yes
Wet space: Yes
Addition: No
Conversion: No

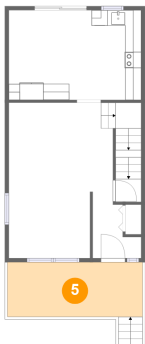
4 Floor 2 - Foyer



Dimensions: 6'1" x 6'8"
Area: 31 sq. ft
Counted as living area: Yes

Heated: Yes
Finished: Yes
Enclosed: Yes
Contiguous: Yes
Permitted: Yes
Wet space: No
Addition: No
Conversion: No

5 Floor 2 - Porch



Dimensions: 16'11" x 6'9"
Area: 115 sq. ft
Counted as living area: No

Heated: No
Finished: Yes
Enclosed: No
Contiguous: Yes
Permitted: Yes
Wet space: No
Addition: No
Conversion: No

6 Floor 2 - Living Room



Dimensions: 13'0" x 12'3"
Area: 140 sq. ft
Counted as living area: Yes

Heated: Yes
Finished: Yes
Enclosed: Yes
Contiguous: Yes
Permitted: Yes
Wet space: No
Addition: No
Conversion: No

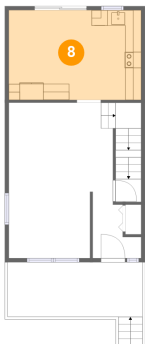
7 Floor 2 - Dining Area



Dimensions: 13'0" x 7'3"
Area: 118 sq. ft
Counted as living area: Yes

Heated: Yes
Finished: Yes
Enclosed: Yes
Contiguous: Yes
Permitted: Yes
Wet space: No
Addition: No
Conversion: No

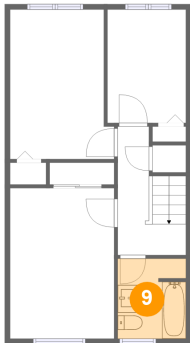
8 Floor 2 - Eat-in Kitchen



Dimensions: 16'7" x 11'3"
Area: 186 sq. ft
Counted as living area: Yes

Heated: Yes
Finished: Yes
Enclosed: Yes
Contiguous: Yes
Permitted: Yes
Wet space: No
Addition: No
Conversion: No

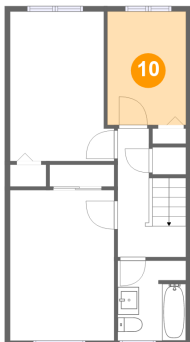
9 Floor 3 - Bath



Dimensions: 6'5" x 7'6"
Area: 48 sq. ft
Counted as living area: Yes

Heated: Yes
Finished: Yes
Enclosed: Yes
Contiguous: Yes
Permitted: Yes
Wet space: Yes
Addition: No
Conversion: No

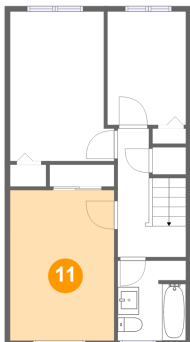
10 Floor 3 - Bedroom



Dimensions: 7'5" x 10'8"
Area: 79 sq. ft
Counted as living area: Yes

Heated: Yes
Finished: Yes
Enclosed: Yes
Contiguous: Yes
Permitted: Yes
Wet space: No
Addition: No
Conversion: No

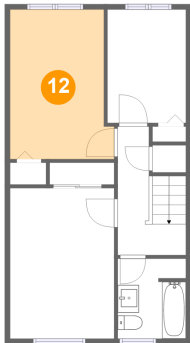
11 Floor 3 - Primary Bedroom



Dimensions: 9'10" x 14'2"
Area: 139 sq. ft
Counted as living area: Yes

Heated: Yes
Finished: Yes
Enclosed: Yes
Contiguous: Yes
Permitted: Yes
Wet space: No
Addition: No
Conversion: No

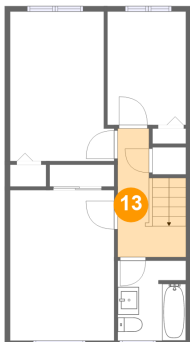
12 Floor 3 - Bedroom



Dimensions: 9'10" x 14'1"
Area: 128 sq. ft
Counted as living area: Yes

Heated: Yes
Finished: Yes
Enclosed: Yes
Contiguous: Yes
Permitted: Yes
Wet space: No
Addition: No
Conversion: No

13 Floor 3 - Hall



Dimensions: 6'5" x 12'1"
Area: 62 sq. ft
Counted as living area: Yes

Heated: Yes
Finished: Yes
Enclosed: Yes
Contiguous: Yes
Permitted: Yes
Wet space: No
Addition: No
Conversion: No