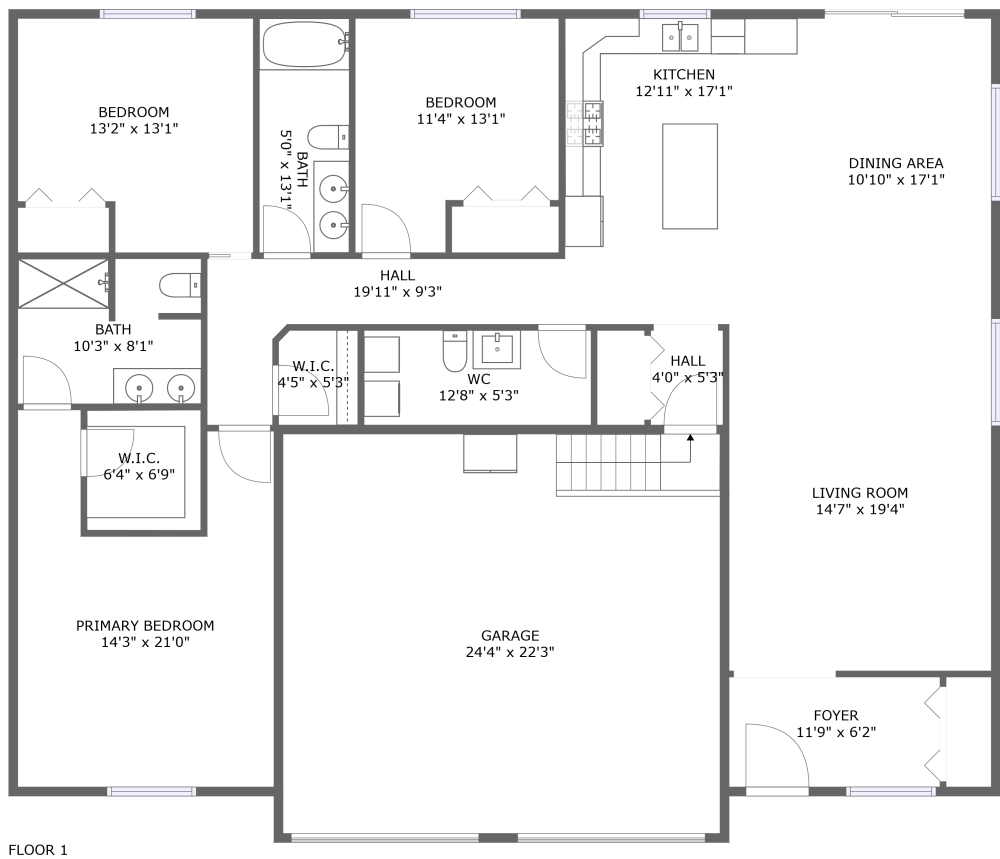


Home report

788 Stage Run Rd,Deadwood,SD,US



Total Area: 1814 sq. ft

Floor 1: 1814 sq. ft

Excluded: Garage 543 sq. ft, Walls: 133 sq. ft

Property summary

 1 Floors

 3 Bedrooms

 2 Bathrooms

Home report

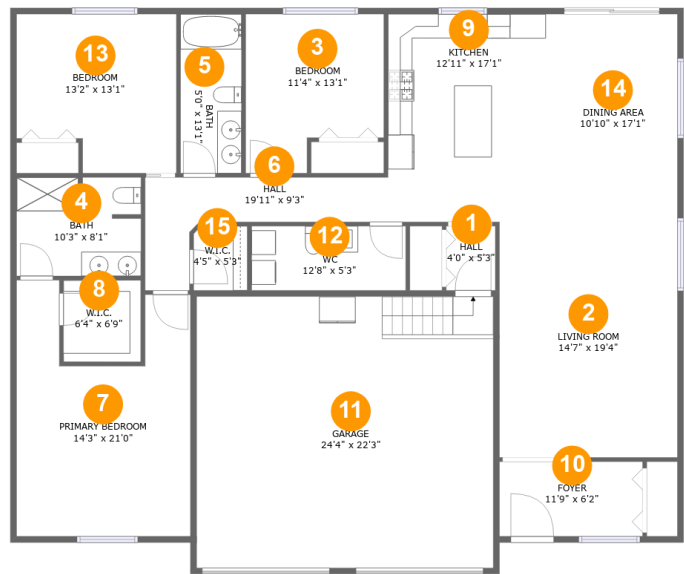
788 Stage Run Rd,Deadwood,SD,US

 **1**
Half baths

 **1**
Garages

Home report

788 Stage Run Rd,Deadwood,SD,US



Room dimensions

Floor 1 Total:1814sqft Excluded: 543sqft

| # | | Max Dimensions | sqft | Included |
|----|-----------------|----------------|------------|----------|
| 1 | Hall | 4'0" x 5'3" | 21 sq. ft | Yes |
| 2 | Living Room | 14'7" x 19'4" | 283 sq. ft | Yes |
| 3 | Bedroom | 11'4" x 13'1" | 130 sq. ft | Yes |
| 4 | Bath | 10'3" x 8'1" | 81 sq. ft | Yes |
| 5 | Bath | 5'0" x 13'1" | 66 sq. ft | Yes |
| 6 | Hall | 19'11" x 9'3" | 94 sq. ft | Yes |
| 7 | Primary Bedroom | 14'3" x 21'0" | 246 sq. ft | Yes |
| 8 | W.I.C. | 6'4" x 6'9" | 43 sq. ft | Yes |
| 9 | Kitchen | 12'11" x 17'1" | 221 sq. ft | Yes |
| 10 | Foyer | 11'9" x 6'2" | 72 sq. ft | Yes |
| 11 | Garage | 24'4" x 22'3" | 543 sq. ft | No |

Home report

788 Stage Run Rd,Deadwood,SD,US

| # | | Max Dimensions | sqft | Included |
|----|-------------|----------------|------------|----------|
| 12 | WC | 12'8" x 5'3" | 67 sq. ft | Yes |
| 13 | Bedroom | 13'2" x 13'1" | 156 sq. ft | Yes |
| 14 | Dining Area | 10'10" x 17'1" | 185 sq. ft | Yes |
| 15 | W.I.C. | 4'5" x 5'3" | 23 sq. ft | Yes |

1 Floor 1 - Hall



Max Dimensions: 4'0" x 5'3"
Calculated Area: 21 sq. ft
Included: Yes

Heated: Yes
Finished: Yes
Enclosed: Yes
Contiguous: Yes
Permitted: Yes
Wet space: No
Addition: No
Conversion: No

2 Floor 1 - Living Room



Max Dimensions: 14'7" x 19'4"
Calculated Area: 283 sq. ft
Included: Yes

Heated: Yes
Finished: Yes
Enclosed: Yes
Contiguous: Yes
Permitted: Yes
Wet space: No
Addition: No
Conversion: No

3 Floor 1 - Bedroom



Max Dimensions: 11'4" x 13'1"
Calculated Area: 130 sq. ft
Included: Yes

Heated: Yes
Finished: Yes
Enclosed: Yes
Contiguous: Yes
Permitted: Yes
Wet space: No
Addition: No
Conversion: No

4 Floor 1 - Bath



Max Dimensions: 10'3" x 8'1"
Calculated Area: 81 sq. ft
Included: Yes

Heated: Yes
Finished: Yes
Enclosed: Yes
Contiguous: Yes
Permitted: Yes
Wet space: Yes
Addition: No
Conversion: No

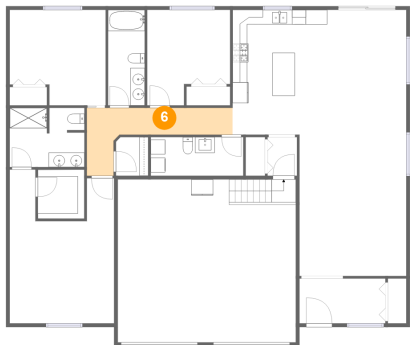
5 Floor 1 - Bath



Max Dimensions: 5'0" x 13'1"
Calculated Area: 66 sq. ft
Included: Yes

Heated: Yes
Finished: Yes
Enclosed: Yes
Contiguous: Yes
Permitted: Yes
Wet space: Yes
Addition: No
Conversion: No

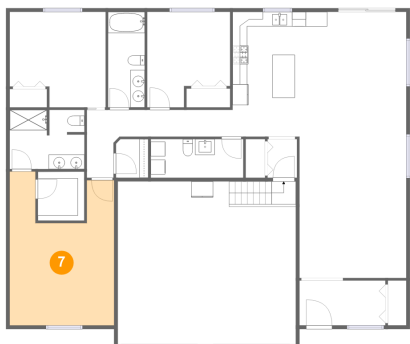
6 Floor 1 - Hall



Max Dimensions: 19'11" x 9'3"
Calculated Area: 94 sq. ft
Included: Yes

Heated: Yes
Finished: Yes
Enclosed: Yes
Contiguous: Yes
Permitted: Yes
Wet space: No
Addition: No
Conversion: No

7 Floor 1 - Primary Bedroom



Max Dimensions: 14'3" x 21'0"
Calculated Area: 246 sq. ft
Included: Yes

Heated: Yes
Finished: Yes
Enclosed: Yes
Contiguous: Yes
Permitted: Yes
Wet space: No
Addition: No
Conversion: No

8 Floor 1 - W.I.C.



Max Dimensions: 6'4" x 6'9"
Calculated Area: 43 sq. ft
Included: Yes

Heated: Yes
Finished: Yes
Enclosed: Yes
Contiguous: Yes
Permitted: Yes
Wet space: No
Addition: No
Conversion: No

9 Floor 1 - Kitchen



Max Dimensions: 12'11" x 17'1"
Calculated Area: 221 sq. ft
Included: Yes

Heated: Yes
Finished: Yes
Enclosed: Yes
Contiguous: Yes
Permitted: Yes
Wet space: No
Addition: No
Conversion: No

10 Floor 1 - Foyer



Max Dimensions: 11'9" x 6'2"
Calculated Area: 72 sq. ft
Included: Yes

Heated: Yes
Finished: Yes
Enclosed: Yes
Contiguous: Yes
Permitted: Yes
Wet space: No
Addition: No
Conversion: No

11 Floor 1 - Garage



Max Dimensions: 24'4" x 22'3"
Calculated Area: 543 sq. ft
Included: No

Heated: No
Finished: No
Enclosed: Yes
Contiguous: Yes
Permitted: Yes
Wet space: No
Addition: No
Conversion: No

12 Floor 1 - WC



Max Dimensions: 12'8" x 5'3"
Calculated Area: 67 sq. ft
Included: Yes

Heated: Yes
Finished: Yes
Enclosed: Yes
Contiguous: Yes
Permitted: Yes
Wet space: Yes
Addition: No
Conversion: No

13 Floor 1 - Bedroom



Max Dimensions: 13'2" x 13'1"
Calculated Area: 156 sq. ft
Included: Yes

Heated: Yes
Finished: Yes
Enclosed: Yes
Contiguous: Yes
Permitted: Yes
Wet space: No
Addition: No
Conversion: No

14 Floor 1 - Dining Area



Max Dimensions: 10'10" x 17'1"
Calculated Area: 185 sq. ft
Included: Yes

Heated: Yes
Finished: Yes
Enclosed: Yes
Contiguous: Yes
Permitted: Yes
Wet space: No
Addition: No
Conversion: No

Home report

788 Stage Run Rd,Deadwood,SD,US

15 Floor 1 - W.I.C.



Max Dimensions: 4'5" x 5'3"
Calculated Area: 23 sq. ft
Included: Yes

Heated: Yes
Finished: Yes
Enclosed: Yes
Contiguous: Yes
Permitted: Yes
Wet space: No
Addition: No
Conversion: No