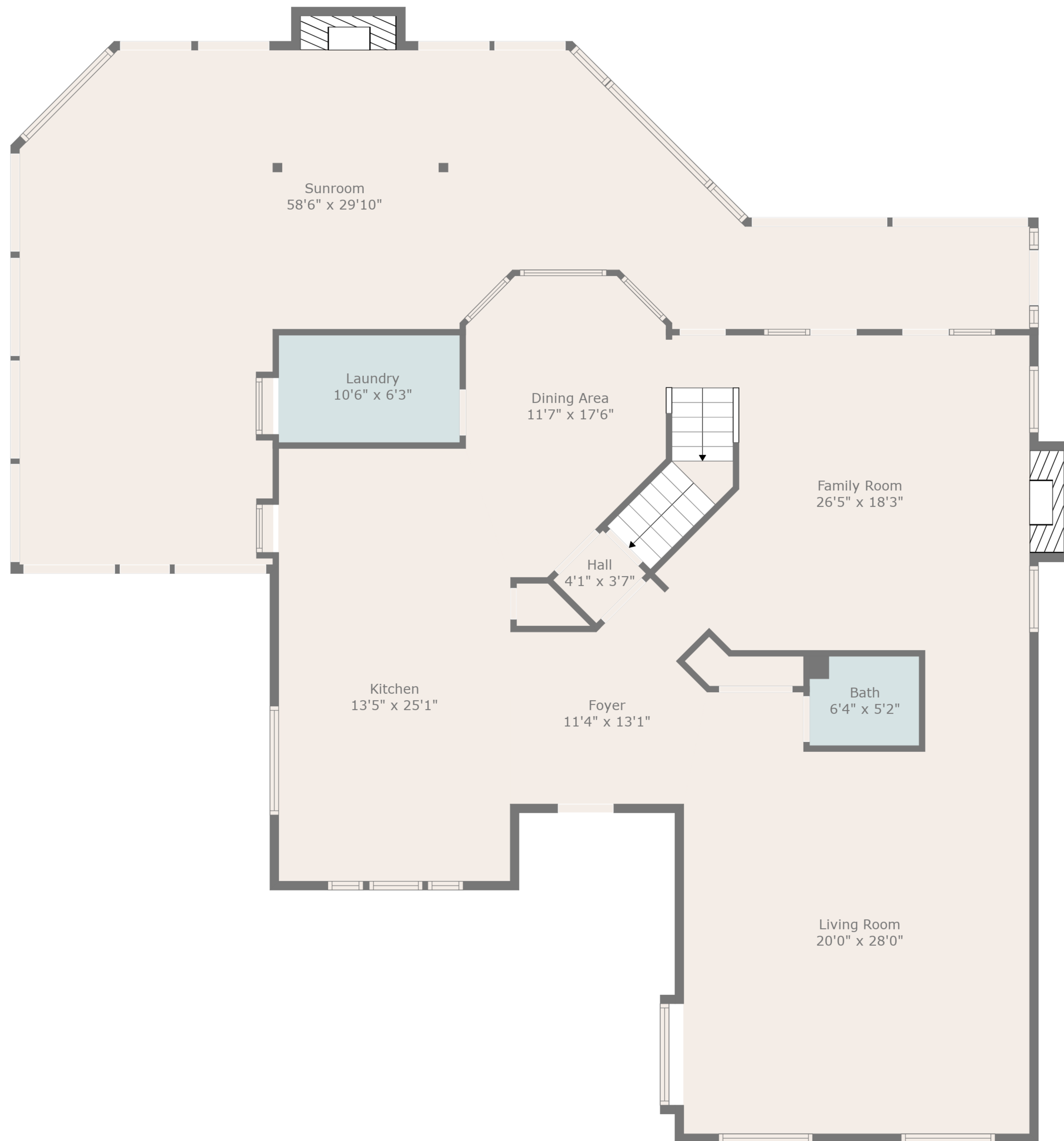


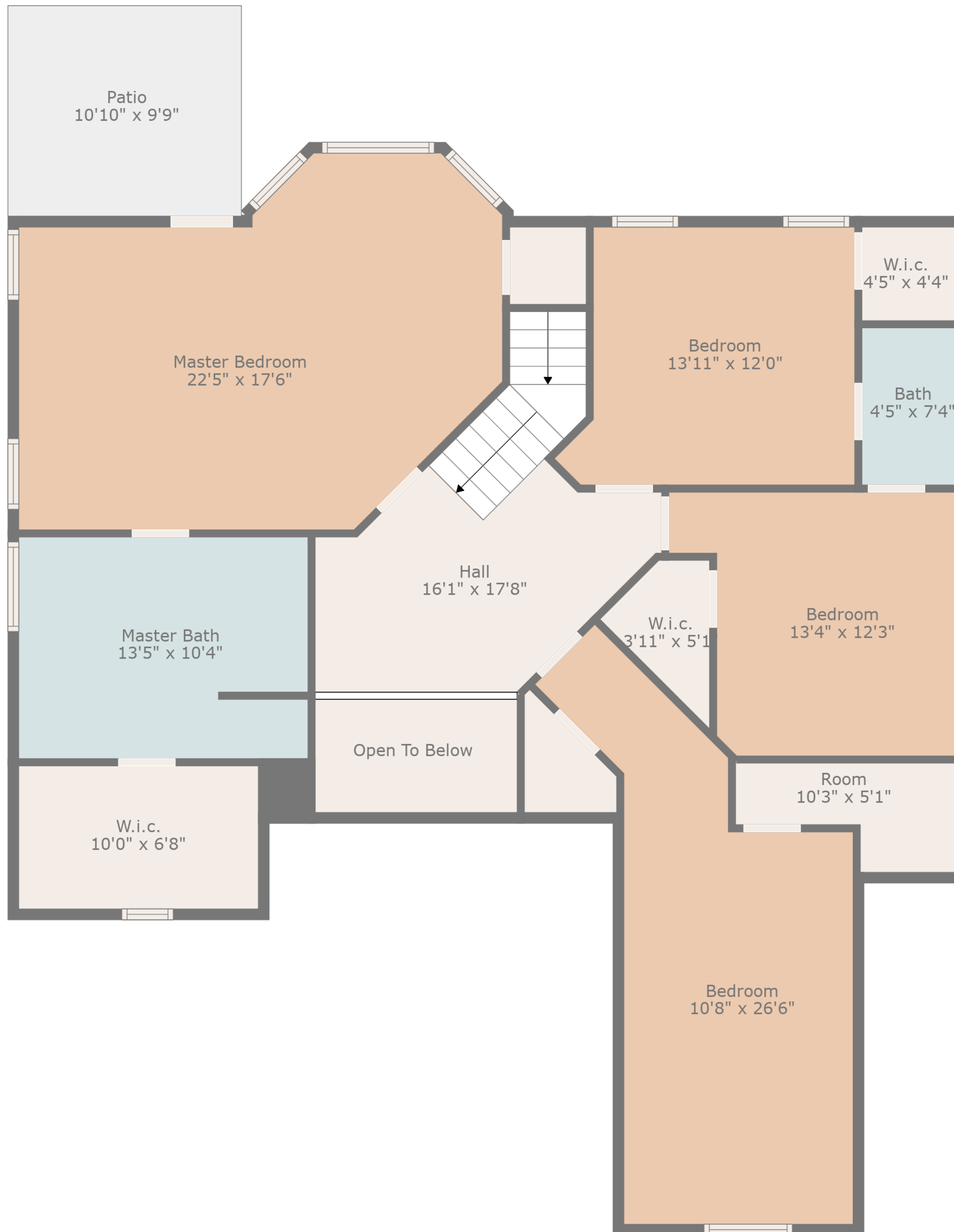
TOTAL: 5052 sq. ft

Below Ground: 1094 sq. ft, Below Ground: 2555 sq. ft, FLOOR 3: 1403 sq. ft
 EXCLUDED AREAS: GARAGE: 430 sq. ft, STORAGE: 55 sq. ft, ELECTRICAL ROOM: 33 sq. ft,
 LOW CEILING: 48 sq. ft, FIREPLACE: 41 sq. ft, BAY WINDOW: 13 sq. ft,
 PATIO: 106 sq. ft, OPEN TO BELOW: 49 sq. ft



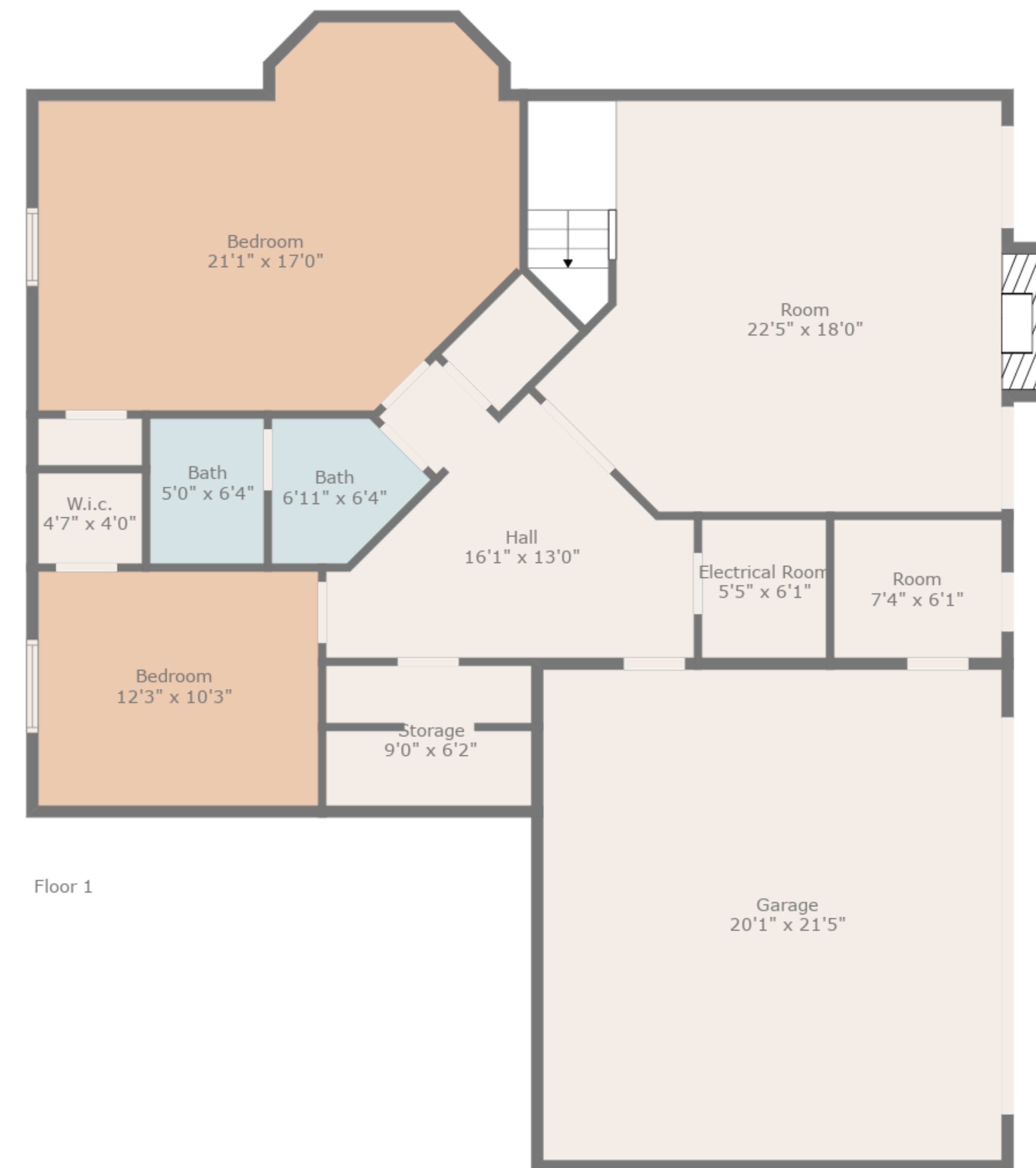
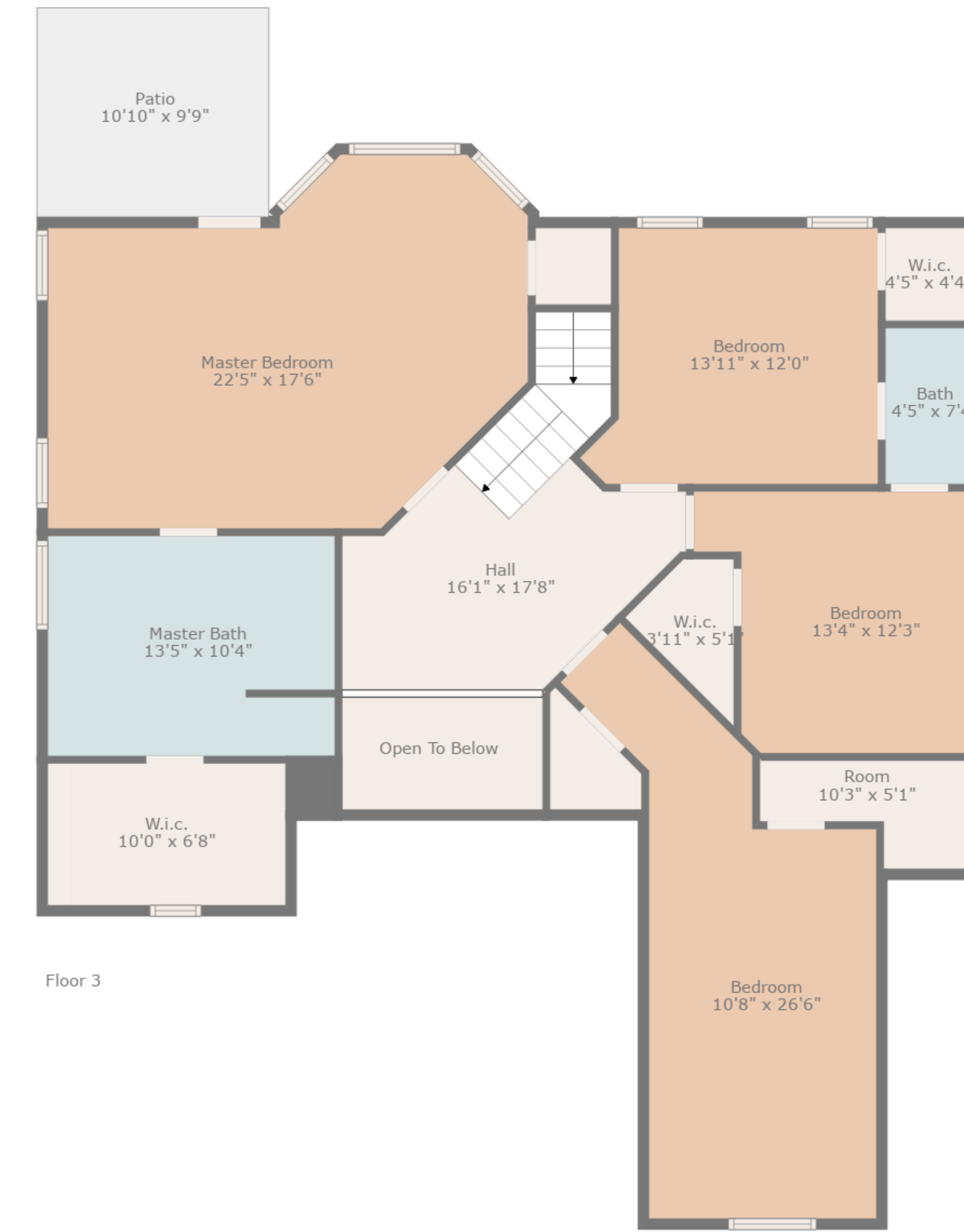
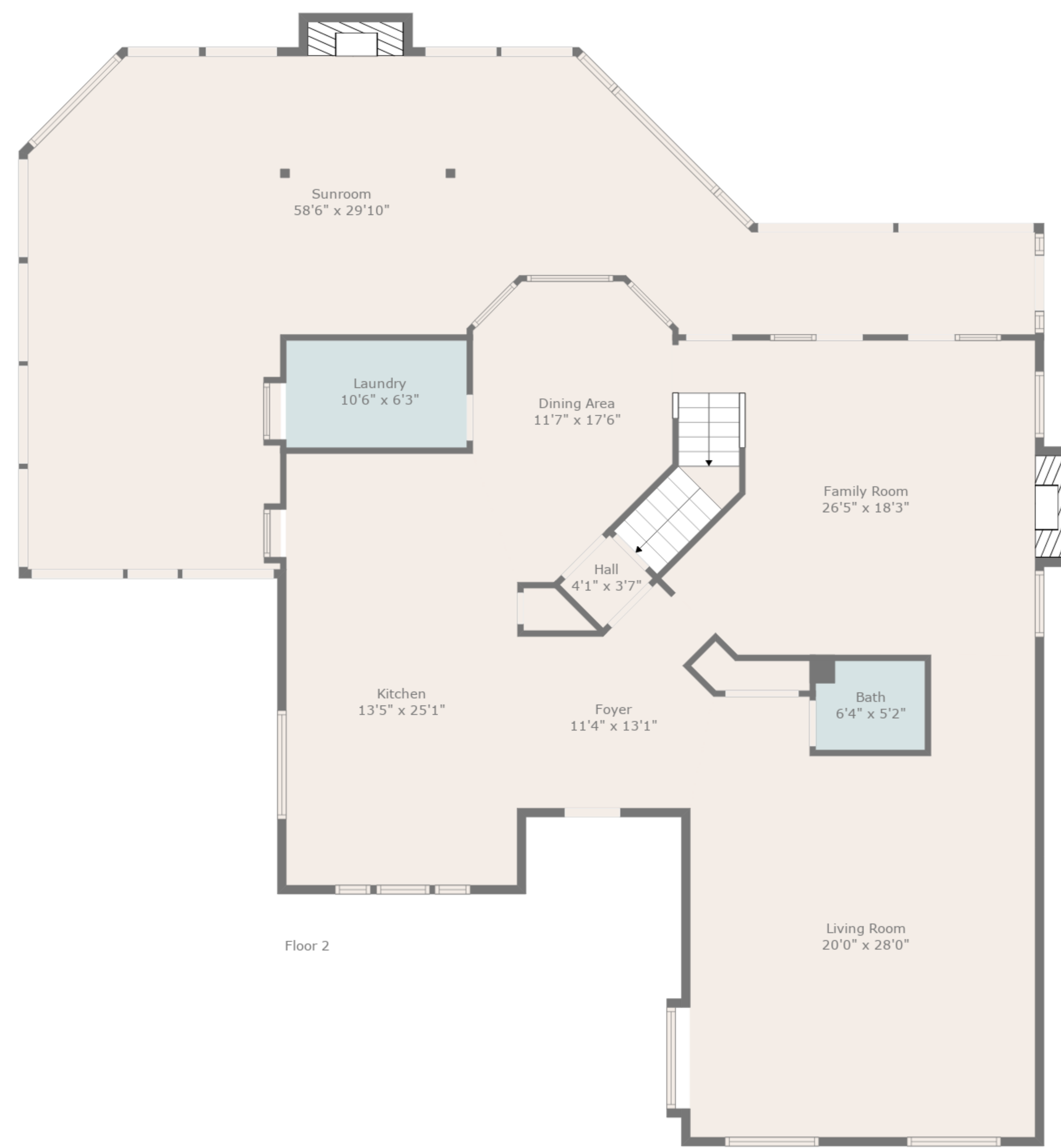
TOTAL: 5052 sq. ft

Below Ground: 1094 sq. ft, Below Ground: 2555 sq. ft, FLOOR 3: 1403 sq. ft
 EXCLUDED AREAS: GARAGE: 430 sq. ft, STORAGE: 55 sq. ft, ELECTRICAL ROOM: 33 sq. ft,
 LOW CEILING: 48 sq. ft, FIREPLACE: 41 sq. ft, BAY WINDOW: 13 sq. ft,
 PATIO: 106 sq. ft, OPEN TO BELOW: 49 sq. ft



TOTAL: 5052 sq. ft

Below Ground: 1094 sq. ft, Below Ground: 2555 sq. ft, FLOOR 3: 1403 sq. ft
 EXCLUDED AREAS: GARAGE: 430 sq. ft, STORAGE: 55 sq. ft, ELECTRICAL ROOM: 33 sq. ft,
 LOW CEILING: 48 sq. ft, FIREPLACE: 41 sq. ft, BAY WINDOW: 13 sq. ft,
 PATIO: 106 sq. ft, OPEN TO BELOW: 49 sq. ft



TOTAL: 5052 sq. ft

Below Ground: 1094 sq. ft, Below Ground: 2555 sq. ft, FLOOR 3: 1403 sq. ft
 EXCLUDED AREAS: GARAGE: 430 sq. ft, STORAGE: 55 sq. ft, ELECTRICAL ROOM: 33 sq. ft,
 LOW CEILING: 48 sq. ft, FIREPLACE: 41 sq. ft, BAY WINDOW: 13 sq. ft,
 PATIO: 106 sq. ft, OPEN TO BELOW: 49 sq. ft