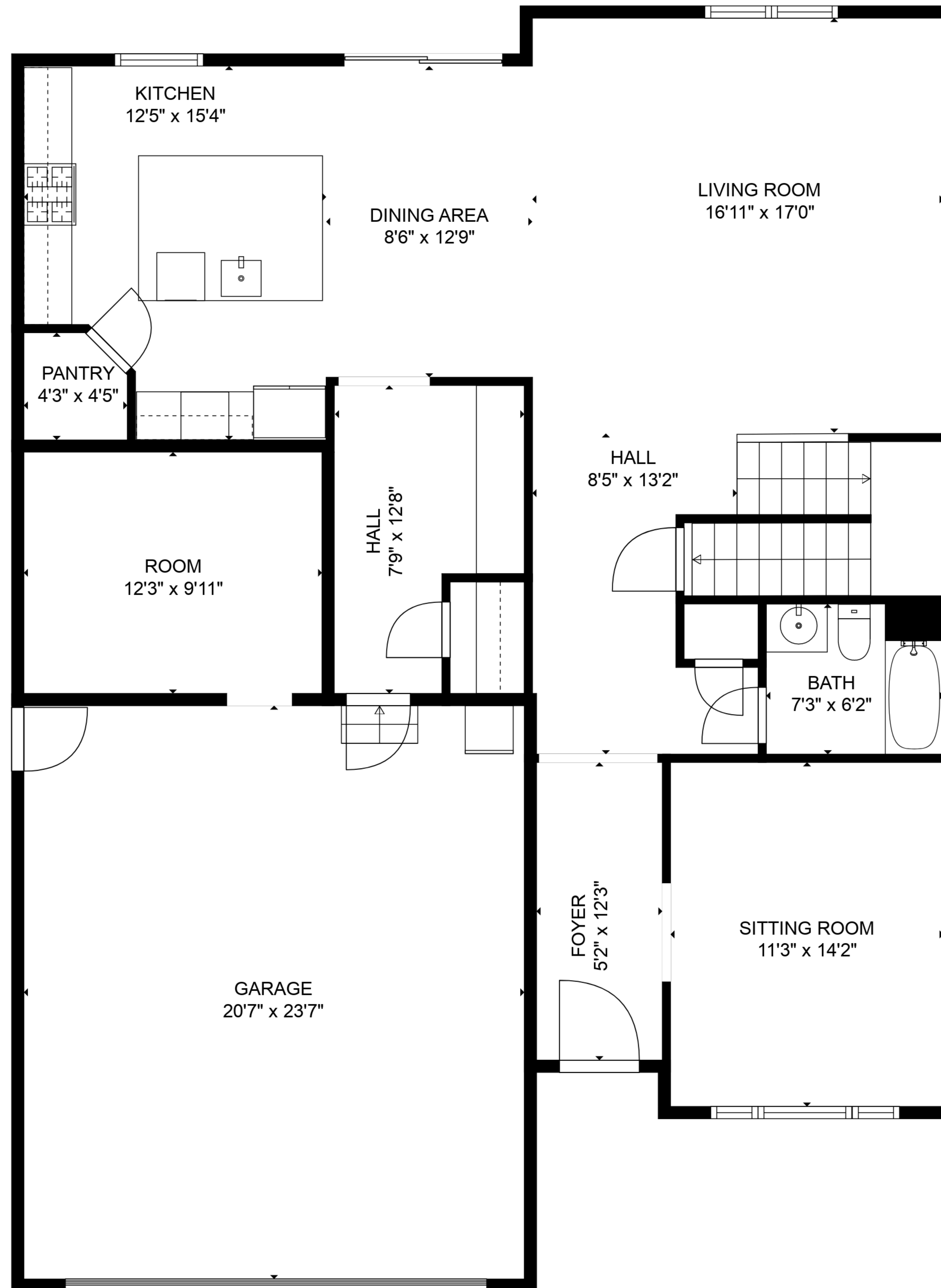


BASEMENT
25'0" x 27'3"

TOTAL: 3431 sq. ft
BELOW GROUND: 532 sq. ft, FLOOR 2: 1282 sq. ft, FLOOR 3: 1617 sq. ft
EXCLUDED AREAS: GARAGE: 484 sq. ft

SIZES AND DIMENSIONS ARE APPROXIMATE, ACTUAL MAY VARY.

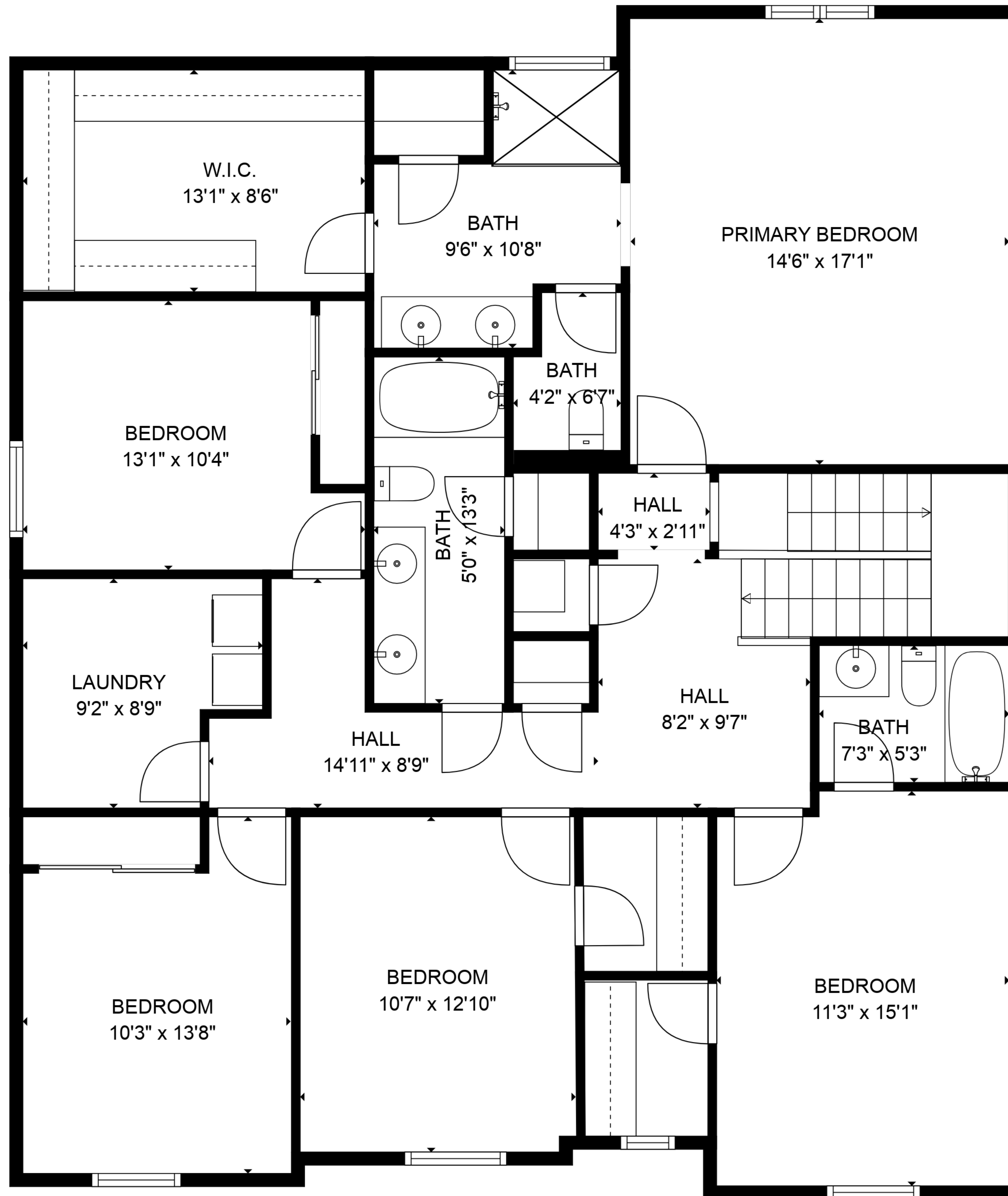


TOTAL: 3431 sq. ft

BELOW GROUND: 532 sq. ft, FLOOR 2: 1282 sq. ft, FLOOR 3: 1617 sq. ft

EXCLUDED AREAS: GARAGE: 484 sq. ft

SIZES AND DIMENSIONS ARE APPROXIMATE, ACTUAL MAY VARY.

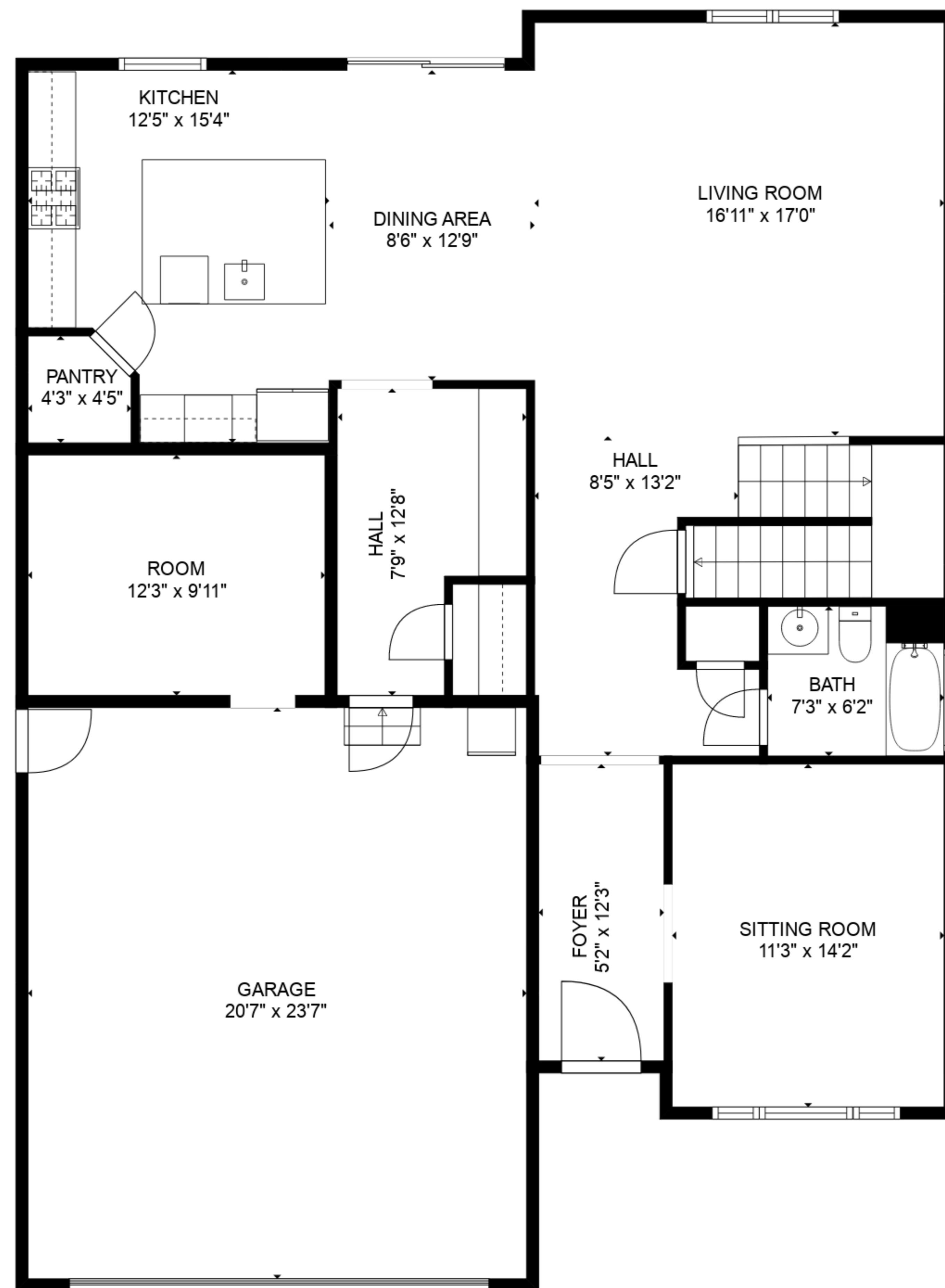


TOTAL: 3431 sq. ft

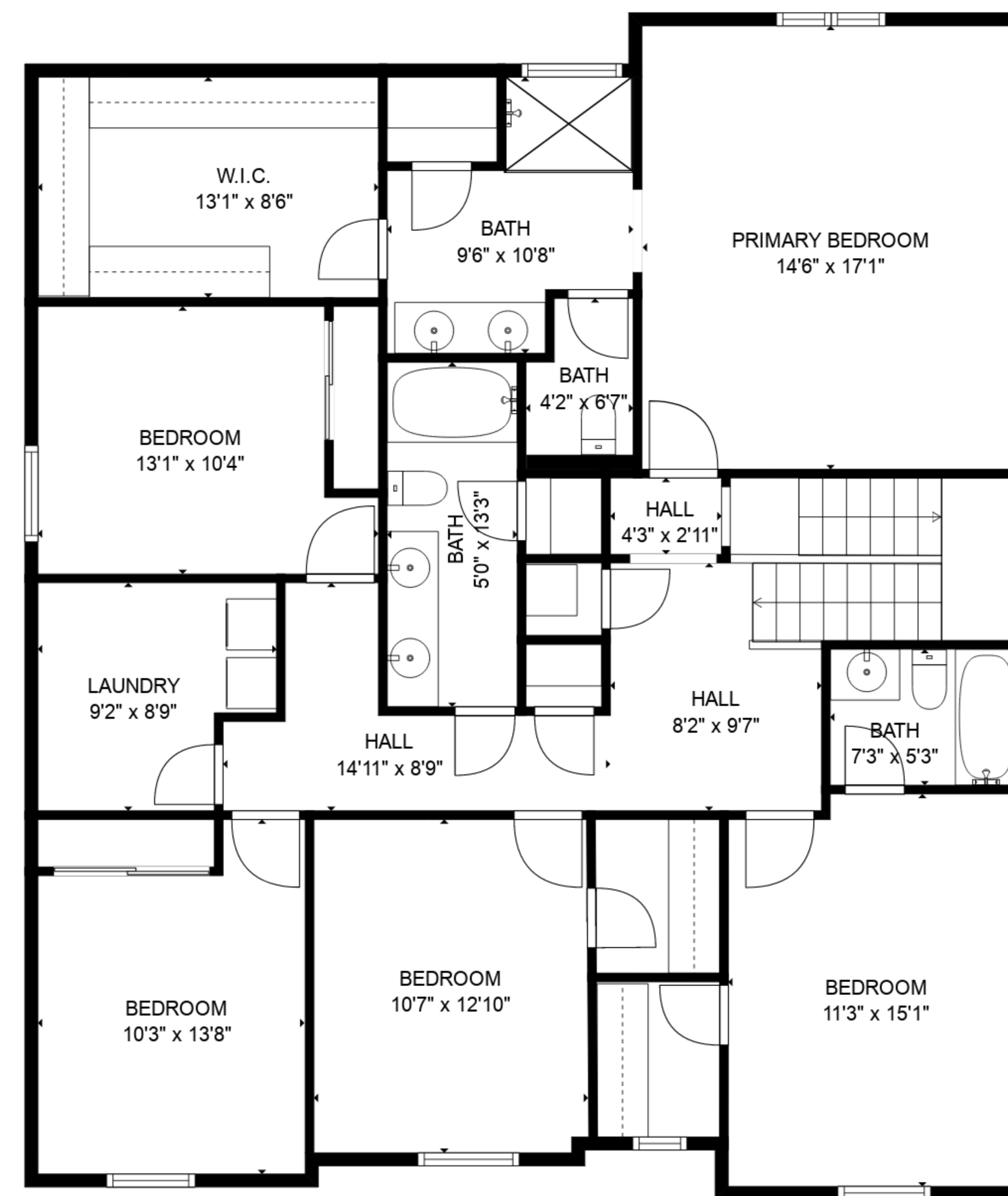
BELOW GROUND: 532 sq. ft, FLOOR 2: 1282 sq. ft, FLOOR 3: 1617 sq. ft

EXCLUDED AREAS: GARAGE: 484 sq. ft

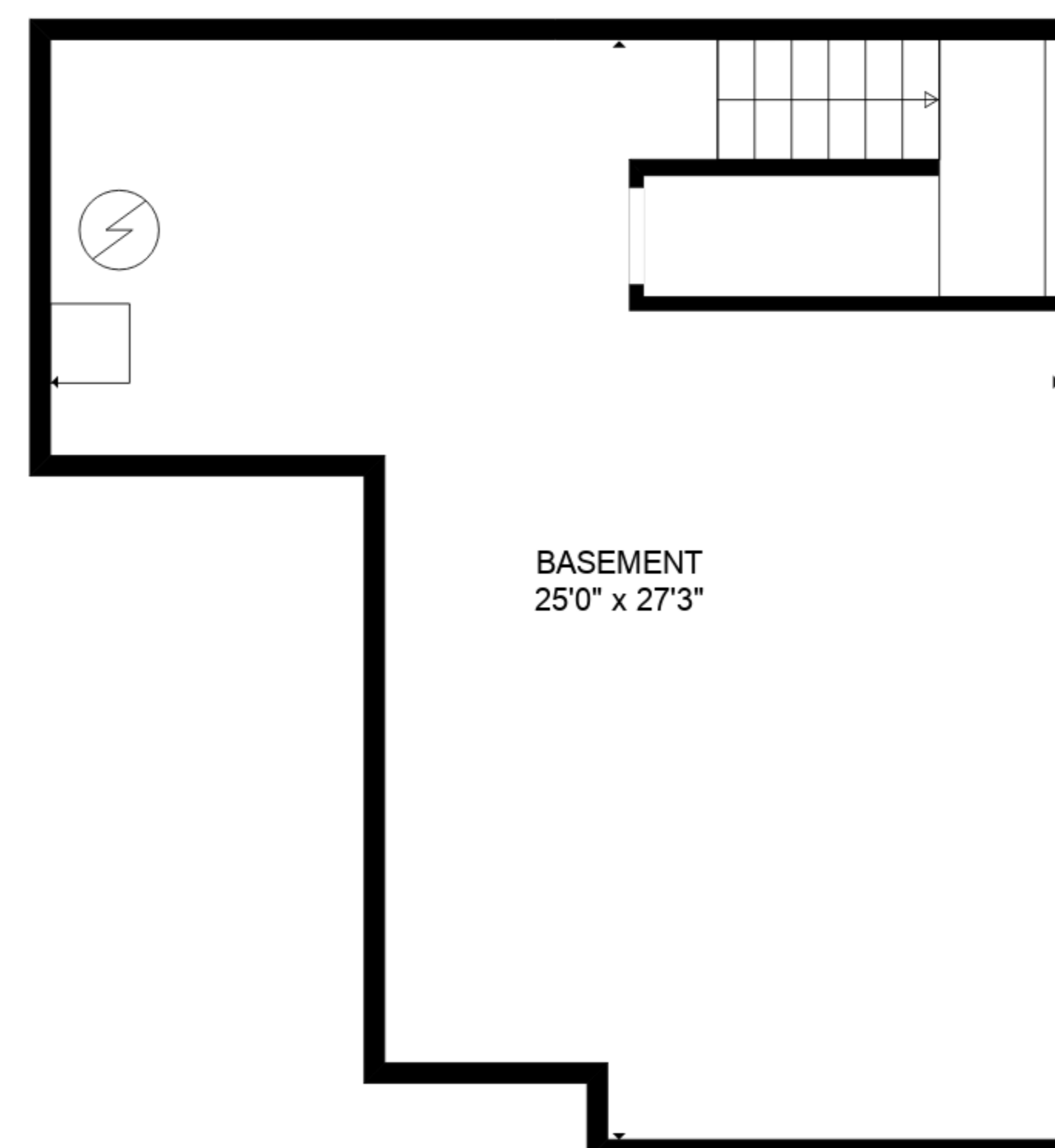
SIZES AND DIMENSIONS ARE APPROXIMATE, ACTUAL MAY VARY.



FLOOR 2



FLOOR 3



FLOOR 1

TOTAL: 3431 sq. ft
 BELOW GROUND: 532 sq. ft, FLOOR 2: 1282 sq. ft, FLOOR 3: 1617 sq. ft
 EXCLUDED AREAS: GARAGE: 484 sq. ft

SIZES AND DIMENSIONS ARE APPROXIMATE, ACTUAL MAY VARY.