



Home report


30603 Steelman Ct,Selbyville,DE,US




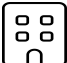
Property summary


**1** Garages


**3** Bedrooms

**3** Bathrooms

**0** Half baths

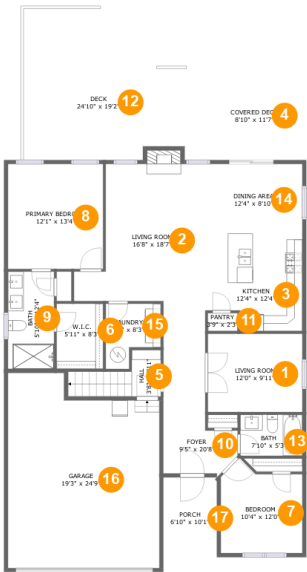
**2** Floors

**2,047** Gross living area sqft

**3,070** Total sqft

Home report

30603 Steelman Ct,Selbyville,DE,US



Room dimensions

Floor 1 Total sqft: 2462    Living area: 1439

#		Dimensions	sqft	Counted as living area
1	Living Room	12'0" x 9'11"	119 sq. ft	Yes
2	Living Room	16'8" x 18'7"	249 sq. ft	Yes
3	Kitchen	12'4" x 12'4"	141 sq. ft	Yes
4	Covered Deck	8'10" x 11'7"	103 sq. ft	No
5	Hall	3'8" x 5'11"	47 sq. ft	Yes
6	W.I.C.	5'11" x 8'3"	49 sq. ft	Yes
7	Bedroom	10'4" x 12'0"	108 sq. ft	Yes
8	Primary Bedroom	12'1" x 13'4"	161 sq. ft	Yes
9	Bath	5'10" x 12'4"	72 sq. ft	Yes
10	Foyer	9'5" x 20'8"	130 sq. ft	Yes
11	Pantry	3'9" x 2'3"	9 sq. ft	Yes

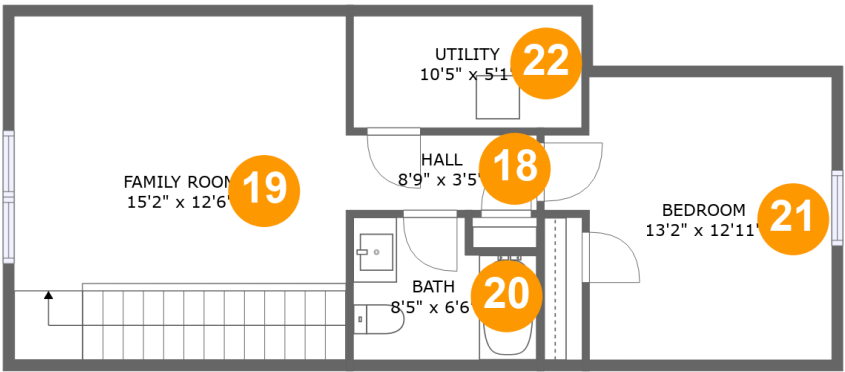
## Home report

**30603 Steelman Ct,Selbyville,DE,US**

#		Dimensions	sqft	Counted as living area
12	Deck	24'10" x 19'2"	380 sq. ft	No
13	Bath	7'10" x 5'3"	41 sq. ft	Yes
14	Dining Area	12'4" x 8'10"	109 sq. ft	Yes
15	Laundry	7'0" x 8'3"	47 sq. ft	Yes
16	Garage	19'3" x 24'9"	433 sq. ft	No
17	Porch	6'10" x 10'1"	69 sq. ft	No

Home report

30603 Steelman Ct,Selbyville,DE,US



Room dimensions

Floor 2 Total sqft: 608 Living area: 608

#		Dimensions	sqft	Counted as living area
18	Hall	8'9" x 3'5"	30 sq. ft	Yes
19	Family Room	15'2" x 12'6"	238 sq. ft	Yes
20	Bath	8'5" x 6'6"	49 sq. ft	Yes
21	Bedroom	13'2" x 12'11"	150 sq. ft	Yes
22	Utility	10'5" x 5'1"	53 sq. ft	Yes

1 Floor 1 - Living Room



Dimensions: 12'0" x 9'11"  
Area: 119 sq. ft  
Counted as living area: Yes

Heated: Yes  
Finished: Yes  
Enclosed: Yes  
Contiguous: Yes  
Permitted: Yes  
Wet space: No  
Addition: No  
Conversion: No

2 Floor 1 - Living Room



Dimensions: 16'8" x 18'7"  
Area: 249 sq. ft  
Counted as living area: Yes

Heated: Yes  
Finished: Yes  
Enclosed: Yes  
Contiguous: Yes  
Permitted: Yes  
Wet space: No  
Addition: No  
Conversion: No

3 Floor 1 - Kitchen



Dimensions: 12'4" x 12'4"  
Area: 141 sq. ft  
Counted as living area: Yes

Heated: Yes  
Finished: Yes  
Enclosed: Yes  
Contiguous: Yes  
Permitted: Yes  
Wet space: No  
Addition: No  
Conversion: No

4 Floor 1 - Covered Deck



Dimensions: 8'10" x 11'7"  
Area: 103 sq. ft  
Counted as living area: No

Heated: No  
Finished: Yes  
Enclosed: No  
Contiguous: Yes  
Permitted: Yes  
Wet space: No  
Addition: No  
Conversion: No

5 Floor 1 - Hall



Dimensions: 3'8" x 5'11"  
Area: 47 sq. ft  
Counted as living area: Yes

Heated: Yes  
Finished: Yes  
Enclosed: Yes  
Contiguous: Yes  
Permitted: Yes  
Wet space: No  
Addition: No  
Conversion: No

6 Floor 1 - W.I.C.



Dimensions: 5'11" x 8'3"  
Area: 49 sq. ft  
Counted as living area: Yes

Heated: Yes  
Finished: Yes  
Enclosed: Yes  
Contiguous: Yes  
Permitted: Yes  
Wet space: No  
Addition: No  
Conversion: No

7 Floor 1 - Bedroom



Dimensions: 10'4" x 12'0"  
Area: 108 sq. ft  
Counted as living area: Yes

Heated: Yes  
Finished: Yes  
Enclosed: Yes  
Contiguous: Yes  
Permitted: Yes  
Wet space: No  
Addition: No  
Conversion: No

8 Floor 1 - Primary Bedroom



Dimensions: 12'1" x 13'4"  
Area: 161 sq. ft  
Counted as living area: Yes

Heated: Yes  
Finished: Yes  
Enclosed: Yes  
Contiguous: Yes  
Permitted: Yes  
Wet space: No  
Addition: No  
Conversion: No

9 Floor 1 - Bath



Dimensions: 5'10" x 12'4"  
Area: 72 sq. ft  
Counted as living area: Yes

Heated: Yes  
Finished: Yes  
Enclosed: Yes  
Contiguous: Yes  
Permitted: Yes  
Wet space: Yes  
Addition: No  
Conversion: No

10 Floor 1 - Foyer



Dimensions: 9'5" x 20'8"  
Area: 130 sq. ft  
Counted as living area: Yes

Heated: Yes  
Finished: Yes  
Enclosed: Yes  
Contiguous: Yes  
Permitted: Yes  
Wet space: No  
Addition: No  
Conversion: No

11 Floor 1 - Pantry



Dimensions: 3'9" x 2'3"  
Area: 9 sq. ft  
Counted as living area: Yes

Heated: Yes  
Finished: Yes  
Enclosed: Yes  
Contiguous: Yes  
Permitted: Yes  
Wet space: No  
Addition: No  
Conversion: No



12 Floor 1 - Deck



Dimensions: 24'10" x 19'2"  
Area: 380 sq. ft  
Counted as living area: No

Heated: No  
Finished: Yes  
Enclosed: No  
Contiguous: Yes  
Permitted: Yes  
Wet space: No  
Addition: No  
Conversion: No

13 Floor 1 - Bath



Dimensions: 7'10" x 5'3"  
Area: 41 sq. ft  
Counted as living area: Yes

Heated: Yes  
Finished: Yes  
Enclosed: Yes  
Contiguous: Yes  
Permitted: Yes  
Wet space: Yes  
Addition: No  
Conversion: No

14 Floor 1 - Dining Area



Dimensions: 12'4" x 8'10"  
Area: 109 sq. ft  
Counted as living area: Yes

Heated: Yes  
Finished: Yes  
Enclosed: Yes  
Contiguous: Yes  
Permitted: Yes  
Wet space: No  
Addition: No  
Conversion: No

## 15 Floor 1 - Laundry



Dimensions: 7'0" x 8'3"  
Area: 47 sq. ft  
Counted as living area: Yes

Heated: Yes  
Finished: Yes  
Enclosed: Yes  
Contiguous: Yes  
Permitted: Yes  
Wet space: No  
Addition: No  
Conversion: No

## 16 Floor 1 - Garage



Dimensions: 19'3" x 24'9"  
Area: 433 sq. ft  
Counted as living area: No

Heated: No  
Finished: No  
Enclosed: Yes  
Contiguous: Yes  
Permitted: Yes  
Wet space: No  
Addition: No  
Conversion: No

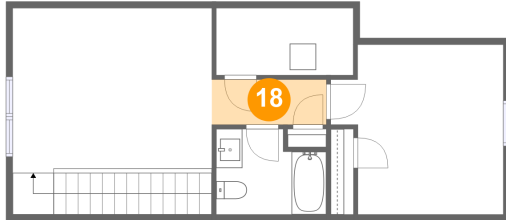
## 17 Floor 1 - Porch



Dimensions: 6'10" x 10'1"  
Area: 69 sq. ft  
Counted as living area: No

Heated: No  
Finished: Yes  
Enclosed: No  
Contiguous: Yes  
Permitted: Yes  
Wet space: No  
Addition: No  
Conversion: No

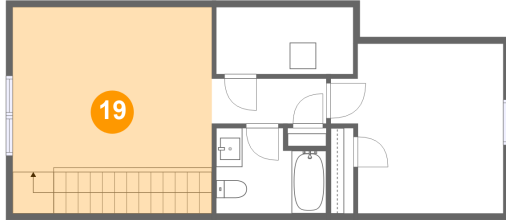
## 18 Floor 2 - Hall



Dimensions: 8'9" x 3'5"  
Area: 30 sq. ft  
Counted as living area: Yes

Heated: Yes  
Finished: Yes  
Enclosed: Yes  
Contiguous: Yes  
Permitted: Yes  
Wet space: No  
Addition: No  
Conversion: No

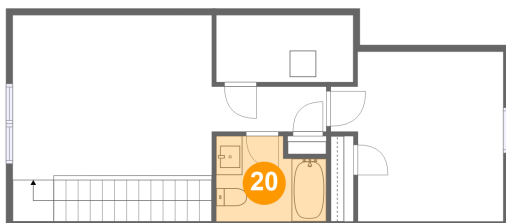
## 19 Floor 2 - Family Room



Dimensions: 15'2" x 12'6"  
Area: 238 sq. ft  
Counted as living area: Yes

Heated: Yes  
Finished: Yes  
Enclosed: Yes  
Contiguous: Yes  
Permitted: Yes  
Wet space: No  
Addition: No  
Conversion: No

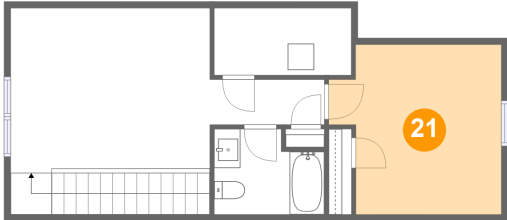
## 20 Floor 2 - Bath



Dimensions: 8'5" x 6'6"  
Area: 49 sq. ft  
Counted as living area: Yes

Heated: Yes  
Finished: Yes  
Enclosed: Yes  
Contiguous: Yes  
Permitted: Yes  
Wet space: Yes  
Addition: No  
Conversion: No

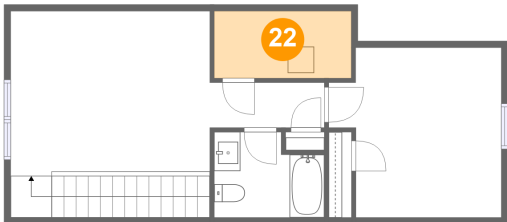
21 Floor 2 - Bedroom



Dimensions: 13'2" x 12'11"  
Area: 150 sq. ft  
Counted as living area: Yes

Heated: Yes  
Finished: Yes  
Enclosed: Yes  
Contiguous: Yes  
Permitted: Yes  
Wet space: No  
Addition: No  
Conversion: No

22 Floor 2 - Utility



Dimensions: 10'5" x 5'1"  
Area: 53 sq. ft  
Counted as living area: Yes

Heated: Yes  
Finished: Yes  
Enclosed: Yes  
Contiguous: Yes  
Permitted: Yes  
Wet space: No  
Addition: No  
Conversion: No