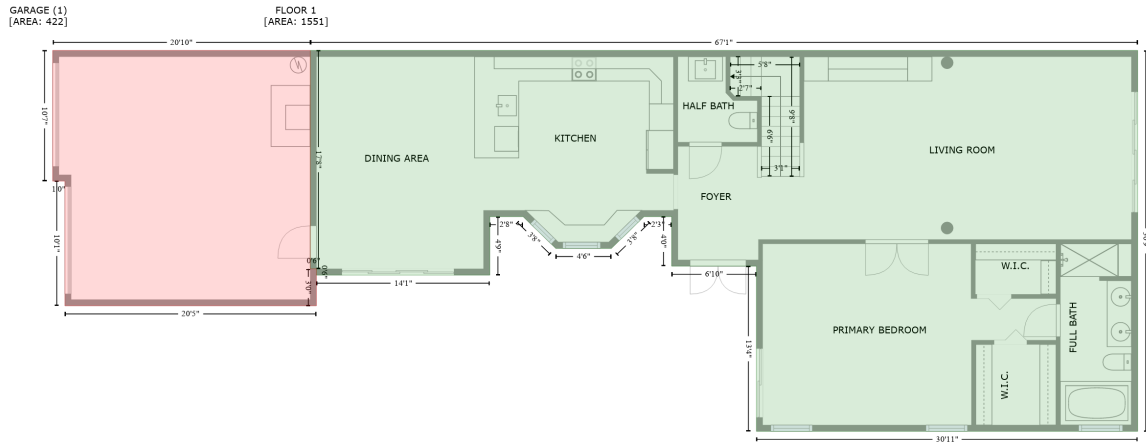


450 Northeast 16th Avenue, Victoria Park, Fort Lauderdale, Broward County, Florida, United States, 33301

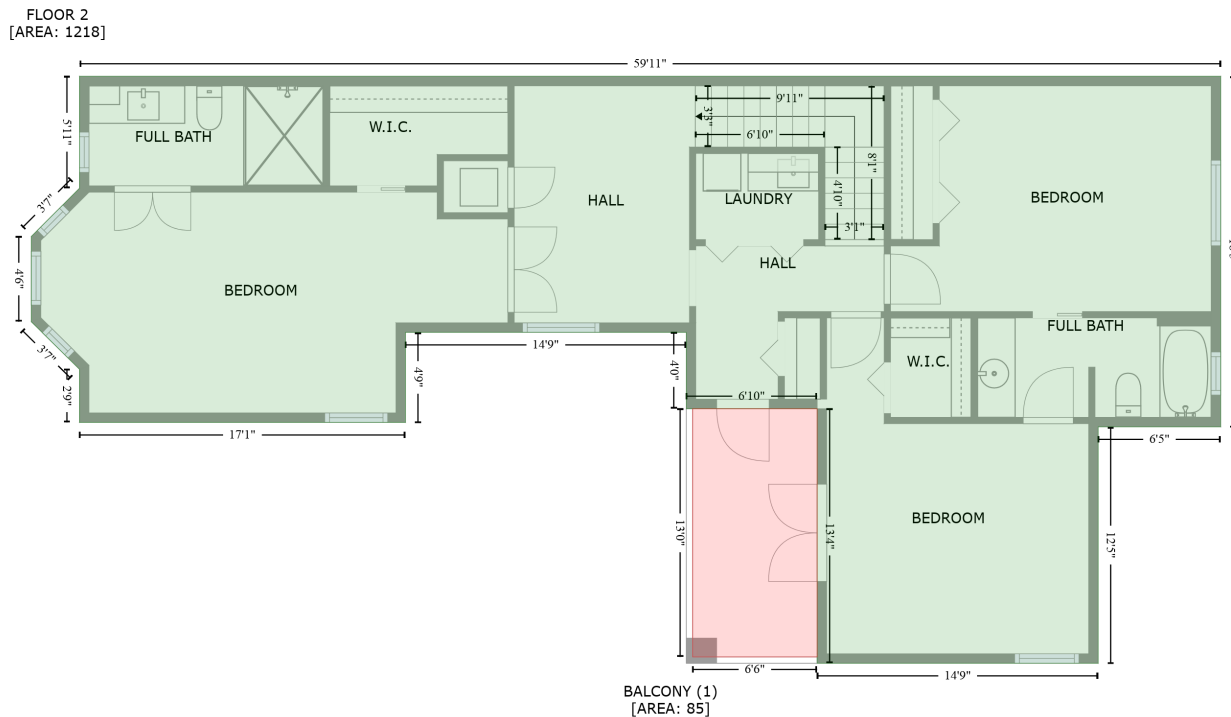
Gross Living Area: 2769 sq. ft



Space	Area (sq. ft)	Calculation <small>Coordinate Polygon Area Algorithm using inches</small>
FLOOR 1 (Living area)	1551	$ \begin{aligned} & -((724.7 + 724.7) * (427.3 - 796.7) + (724.7 + 354) * (796.7 - 796.7) + (354 + 354) * (796.7 - 636.5) \\ & + (354 + 271.6) * (636.5 - 636.5) + (271.6 + 271.6) * (636.5 - 588.5) + (271.6 + 244.8) * \\ & (588.5 - 588.5) + (244.8 + 213) * (588.5 - 619.3) + (213 + 158.9) * (619.3 - 619.3) + (158.9 + \\ & 127.1) * (619.3 - 588.5) + (127.1 + 94.8) * (588.5 - 588.5) + (94.8 + 94.8) * (588.5 - 645.2) + (94.8 \\ & + -73.8) * (645.2 - 645.2) + (-73.8 + -73.8) * (645.2 - 639.2) + (-73.8 + -79.8) * (639.2 - 639.2) + \\ & (-79.8 + -79.8) * (639.2 - 427.3) + (-79.8 + 724.7) * (427.3 - 427.3)) * 0.5 * 0.00694 \end{aligned} $
GARAGE (Non-living area)	422	$ \begin{aligned} & -((-79.8 + -79.8) * (427.3 - 639.2) + (-79.8 + -73.8) * (639.2 - 639.2) + (-73.8 + -73.8) * (639.2 - 675) \\ & + (-73.8 + -318.4) * (675 - 675) + (-318.4 + -318.4) * (675 - 554) + (-318.4 + -330.3) * (554 - 554) \\ & + (-330.3 + -330.3) * (554 - 427.3) + (-330.3 + -79.8) * (427.3 - 427.3)) * 0.5 * 0.00694 \end{aligned} $

450 Northeast 16th Avenue, Victoria Park, Fort Lauderdale, Broward County, Florida, United States, 33301

Gross Living Area: 2769 sq. ft



Space	Area (sq. ft)	Calculation
FLOOR 2 (Living area)	1218	Coordinate Polygon Area Algorithm using inches $-((608.2 + 608.2) * (427.3 - 647.9) + (608.2 + 531) * (647.9 - 647.9) + (531 + 531) * (647.9 - 796.7) + (531 + 354) * (796.7 - 796.7) + (354 + 354) * (796.7 - 636.5) + (354 + 271.6) * (636.5 - 636.5) + (271.6 + 271.6) * (636.5 - 588.5) + (271.6 + 94.8) * (588.5 - 588.5) + (94.8 + 94.8) * (588.5 - 645.2) + (94.8 + -110.5) * (645.2 - 645.2) + (-110.5 + -110.5) * (645.2 - 611.7) + (-110.5 + -140.8) * (611.7 - 581.8) + (-140.8 + -140.8) * (581.8 - 528.1) + (-140.8 + -110.5) * (528.1 - 497.8) + (-110.5 + -110.5) * (497.8 - 427.3) + (-110.5 + 608.2) * (427.3 - 427.3)) * 0.5 * 0.00694$
BALCONY (Non-living area)	85	$-((354 + 354) * (636.5 - 792.7) + (354 + 275.6) * (792.7 - 792.7) + (275.6 + 275.6) * (792.7 - 636.5) + (275.6 + 354) * (636.5 - 636.5)) * 0.5 * 0.00694$