

Home report

503 Kindred Crescent, Kemptville, United Counties of Leeds and
Grenville, Ontario, Canada, K0G 1J0



Total Area: 1876 sq. ft

Below Ground: 0 sq. ft, Floor 2: 821 sq. ft, Floor 3: 1055 sq. ft
Excluded: Utility 281 sq. ft, Recreationroom 404 sq. ft, Fireplace 10 sq. ft, Opentobelow 196 sq. ft, Walls: 207 sq. ft

Property summary

 **3** Floors

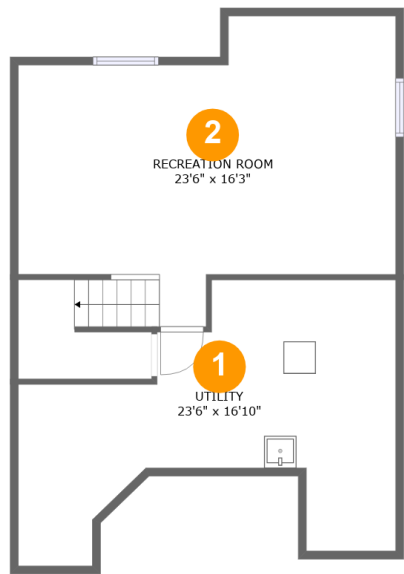
 **3** Bedrooms

 **2** Bathrooms

 **1** Half baths

Home report

503 Kindred Crescent, Kemptville, United Counties of Leeds and
Grenville, Ontario, Canada, K0G 1J0



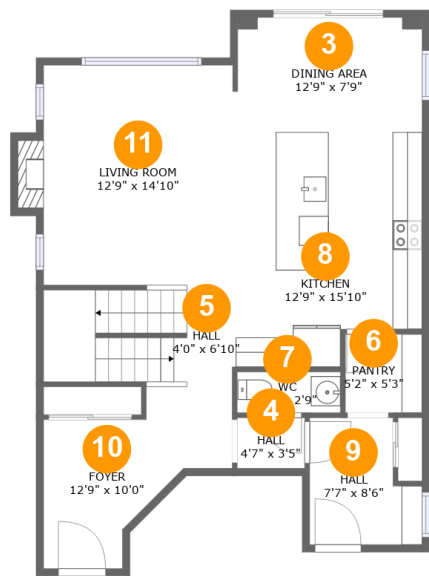
Room dimensions

Floor 1 Below ground Total:0sqft Excluded: 685sqft

#		Max Dimensions	sqft	Included
1	Utility	23'6" x 16'10"	270 sq. ft	No
2	Recreation Room	23'6" x 16'3"	400 sq. ft	No

Home report

503 Kindred Crescent, Kemptville, United Counties of Leeds and
Grenville, Ontario, Canada, K0G 1J0



Room dimensions

Floor 2 Total:821sqft Excluded: 10sqft

#		Max Dimensions	sqft	Included
3	Dining Area	12'9" x 7'9"	97 sq. ft	Yes
4	Hall	4'7" x 3'5"	16 sq. ft	Yes
5	Hall	4'0" x 6'10"	83 sq. ft	Yes
6	Pantry	5'2" x 5'3"	27 sq. ft	Yes
7	WC	7'0" x 2'9"	19 sq. ft	Yes
8	Kitchen	12'9" x 15'10"	188 sq. ft	Yes
9	Hall	7'7" x 8'6"	56 sq. ft	Yes
10	Foyer	12'9" x 10'0"	99 sq. ft	Yes
11	Living Room	12'9" x 14'10"	197 sq. ft	Yes

Home report

503 Kindred Crescent, Kemptville, United Counties of Leeds and
Grenville, Ontario, Canada, K0G 1J0



Room dimensions

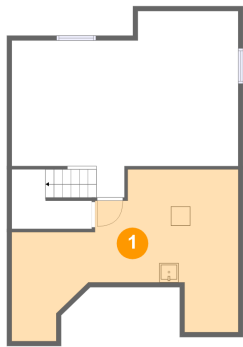
Floor 3

Total:1055sqft

Excluded: 196sqft

#		Max Dimensions	sqft	Included
12	W.I.C.	9'7" x 5'10"	55 sq. ft	Yes
13	Bath	8'4" x 7'5"	62 sq. ft	Yes
14	Family Room	18'4" x 10'2"	186 sq. ft	Yes
15	Hall	6'9" x 29'11"	186 sq. ft	Yes
16	Laundry	4'5" x 7'11"	35 sq. ft	Yes
17	Open To Below	12'9" x 18'1"	196 sq. ft	No
18	Bath	9'7" x 5'6"	53 sq. ft	Yes
19	Bedroom	11'7" x 12'3"	128 sq. ft	Yes
20	Bedroom	9'7" x 12'0"	102 sq. ft	Yes
21	Primary Bedroom	12'5" x 15'5"	174 sq. ft	Yes

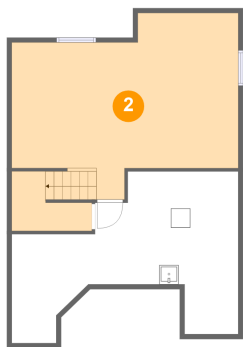
1 Floor 1 - Utility



Max Dimensions: 23'6" x 16'10"
Calculated Area: 270 sq. ft
Included: No

Heated: Yes
Finished: No
Enclosed: Yes
Contiguous: Yes
Permitted: Yes
Wet space: No
Addition: No
Conversion: No

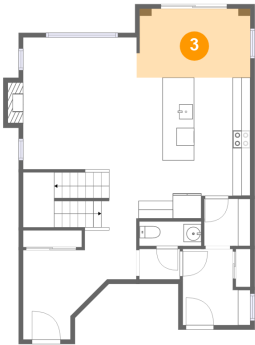
2 Floor 1 - Recreation Room



Max Dimensions: 23'6" x 16'3"
Calculated Area: 400 sq. ft
Included: No

Heated: Yes
Finished: No
Enclosed: Yes
Contiguous: Yes
Permitted: Yes
Wet space: No
Addition: No
Conversion: No

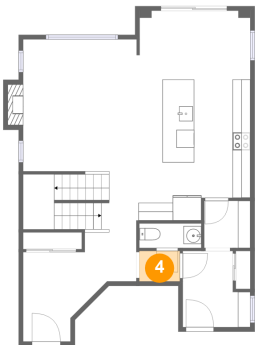
3 Floor 2 - Dining Area



Max Dimensions: 12'9" x 7'9"
Calculated Area: 97 sq. ft
Included: Yes

Heated: Yes
Finished: Yes
Enclosed: Yes
Contiguous: Yes
Permitted: Yes
Wet space: No
Addition: No
Conversion: No

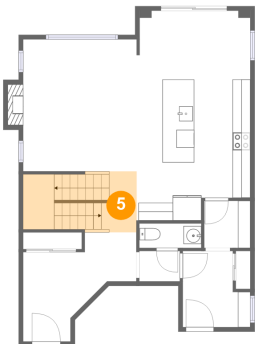
4 Floor 2 - Hall



Max Dimensions: 4'7" x 3'5"
Calculated Area: 16 sq. ft
Included: Yes

Heated: Yes
Finished: Yes
Enclosed: Yes
Contiguous: Yes
Permitted: Yes
Wet space: No
Addition: No
Conversion: No

5 Floor 2 - Hall



Max Dimensions: 4'0" x 6'10"
Calculated Area: 83 sq. ft
Included: Yes

Heated: Yes
Finished: Yes
Enclosed: Yes
Contiguous: Yes
Permitted: Yes
Wet space: No
Addition: No
Conversion: No

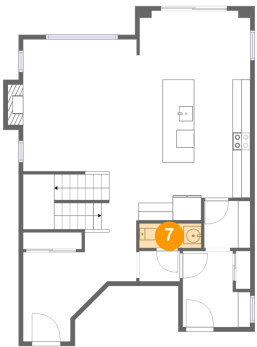
6 Floor 2 - Pantry



Max Dimensions: 5'2" x 5'3"
Calculated Area: 27 sq. ft
Included: Yes

Heated: Yes
Finished: Yes
Enclosed: Yes
Contiguous: Yes
Permitted: Yes
Wet space: No
Addition: No
Conversion: No

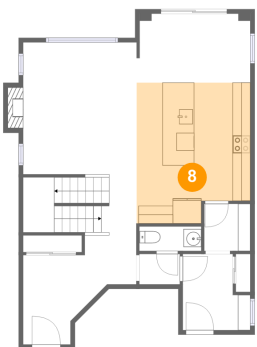
7 Floor 2 - WC



Max Dimensions: 7'0" x 2'9"
Calculated Area: 19 sq. ft
Included: Yes

Heated: Yes
Finished: Yes
Enclosed: Yes
Contiguous: Yes
Permitted: Yes
Wet space: Yes
Addition: No
Conversion: No

8 Floor 2 - Kitchen



Max Dimensions: 12'9" x
15'10"
Calculated Area: 188 sq. ft
Included: Yes

Heated: Yes
Finished: Yes
Enclosed: Yes
Contiguous: Yes
Permitted: Yes
Wet space: No
Addition: No
Conversion: No

503 Kindred Crescent, Kemptville, United Counties of Leeds and
Grenville, Ontario, Canada, K0G 1J0

9 Floor 2 - Hall



Max Dimensions: 7'7" x 8'6"
Calculated Area: 56 sq. ft
Included: Yes

Heated: Yes
Finished: Yes
Enclosed: Yes
Contiguous: Yes
Permitted: Yes
Wet space: No
Addition: No
Conversion: No

10 Floor 2 - Foyer



Max Dimensions: 12'9" x 10'0"
Calculated Area: 99 sq. ft
Included: Yes

Heated: Yes
Finished: Yes
Enclosed: Yes
Contiguous: Yes
Permitted: Yes
Wet space: No
Addition: No
Conversion: No

11 Floor 2 - Living Room



Max Dimensions: 12'9" x 14'10"
Calculated Area: 197 sq. ft
Included: Yes

Heated: Yes
Finished: Yes
Enclosed: Yes
Contiguous: Yes
Permitted: Yes
Wet space: No
Addition: No
Conversion: No

12 Floor 3 - W.I.C.



Max Dimensions: 9'7" x 5'10"
Calculated Area: 55 sq. ft
Included: Yes

Heated: Yes
Finished: Yes
Enclosed: Yes
Contiguous: Yes
Permitted: Yes
Wet space: No
Addition: No
Conversion: No

13 Floor 3 - Bath



Max Dimensions: 8'4" x 7'5"
Calculated Area: 62 sq. ft
Included: Yes

Heated: Yes
Finished: Yes
Enclosed: Yes
Contiguous: Yes
Permitted: Yes
Wet space: Yes
Addition: No
Conversion: No

14 Floor 3 - Family Room



Max Dimensions: 18'4" x 10'2"
Calculated Area: 186 sq. ft
Included: Yes

Heated: Yes
Finished: Yes
Enclosed: Yes
Contiguous: Yes
Permitted: Yes
Wet space: No
Addition: No
Conversion: No

503 Kindred Crescent, Kemptville, United Counties of Leeds and
Grenville, Ontario, Canada, K0G 1J0

15 Floor 3 - Hall



Max Dimensions: 6'9" x 29'11"
Calculated Area: 186 sq. ft
Included: Yes

Heated: Yes
Finished: Yes
Enclosed: Yes
Contiguous: Yes
Permitted: Yes
Wet space: No
Addition: No
Conversion: No

16 Floor 3 - Laundry



Max Dimensions: 4'5" x 7'11"
Calculated Area: 35 sq. ft
Included: Yes

Heated: Yes
Finished: Yes
Enclosed: Yes
Contiguous: Yes
Permitted: Yes
Wet space: No
Addition: No
Conversion: No

17 Floor 3 - Open To Below



Max Dimensions: 12'9" x 18'1"
Calculated Area: 196 sq. ft
Included: No

Heated: No
Finished: No
Enclosed: No
Contiguous: Yes
Permitted: No
Wet space: No
Addition: No
Conversion: No

18 Floor 3 - Bath



Max Dimensions: 9'7" x 5'6"
Calculated Area: 53 sq. ft
Included: Yes

Heated: Yes
Finished: Yes
Enclosed: Yes
Contiguous: Yes
Permitted: Yes
Wet space: Yes
Addition: No
Conversion: No

19 Floor 3 - Bedroom



Max Dimensions: 11'7" x 12'3"
Calculated Area: 128 sq. ft
Included: Yes

Heated: Yes
Finished: Yes
Enclosed: Yes
Contiguous: Yes
Permitted: Yes
Wet space: No
Addition: No
Conversion: No

20 Floor 3 - Bedroom



Max Dimensions: 9'7" x 12'0"
Calculated Area: 102 sq. ft
Included: Yes

Heated: Yes
Finished: Yes
Enclosed: Yes
Contiguous: Yes
Permitted: Yes
Wet space: No
Addition: No
Conversion: No

503 Kindred Crescent, Kemptville, United Counties of Leeds and
Grenville, Ontario, Canada, K0G 1J0

21 Floor 3 - Primary Bedroom



Max Dimensions: 12'5" x
15'5"
Calculated Area: 174 sq. ft
Included: Yes

Heated: Yes
Finished: Yes
Enclosed: Yes
Contiguous:
Yes
Permitted: Yes
Wet space: No
Addition: No
Conversion: No