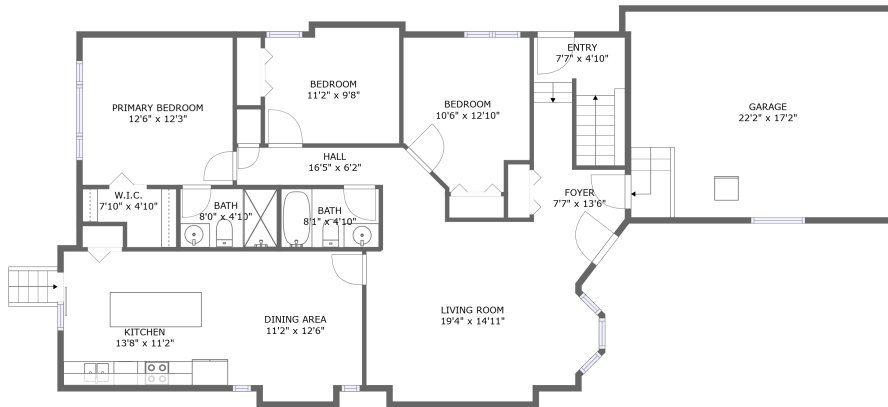
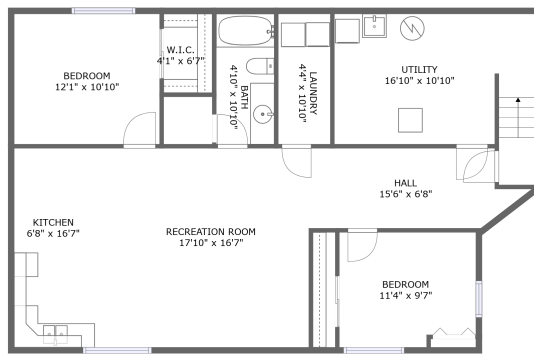


306 Philip Lee Crescent, Peguis, Transcona, Winnipeg, Manitoba, Canada, R3W 0J3







FLOOR 2



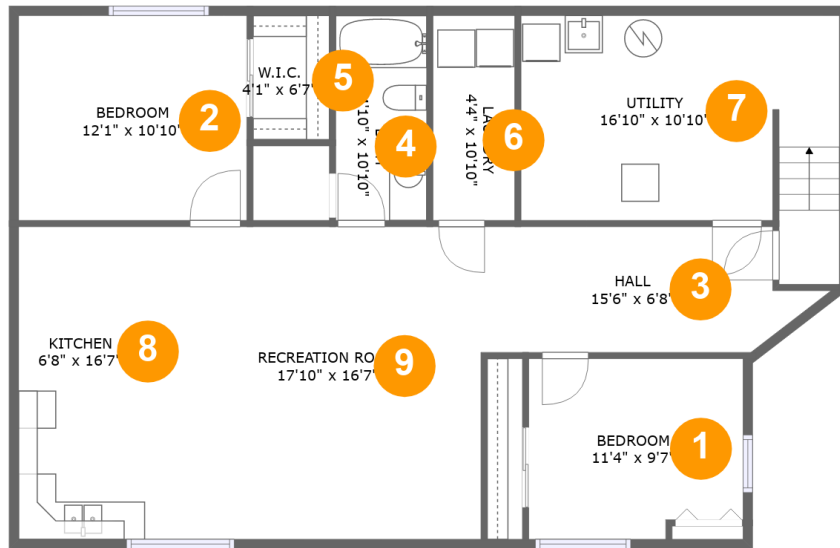
FLOOR 1

Property Summary

 **1** garages  **5** bedrooms  **3** bathrooms  **0** half baths

 **2** floors  **2,291** Gross Living Area sqft  **3,017** total sqft

306 Philip Lee Crescent, Peguis, Transcona, Winnipeg, Manitoba, Canada, R3W 0J3



Room Dimensions

Floor 1

Total sqft: 1218

Living area: 897

#	Room name	Dimensions	Area (sqft)	Counted as Living Area
1	Bedroom	11'4" x 9'7"	104 sq. ft	Yes
2	Bedroom	12'1" x 10'10"	131 sq. ft	Yes
3	Hall	15'6" x 6'8"	106 sq. ft	Yes
4	Bath	4'10" x 10'10"	52 sq. ft	No
5	W.i.c.	4'1" x 6'7"	27 sq. ft	Yes
6	Laundry	4'4" x 10'10"	47 sq. ft	No
7	Utility	16'10" x 10'10"	192 sq. ft	No
8	Kitchen	6'8" x 16'7"	111 sq. ft	Yes
9	Recreation Room	17'10" x 16'7"	295 sq. ft	Yes

306 Philip Lee Crescent, Peguis, Transcona, Winnipeg, Manitoba, Canada, R3W 0J3



Room Dimensions

Floor 2

Total sqft: 1799

Living area: 1394

#	Room name	Dimensions	Area (sqft)	Counted as Living Area
10	Primary Bedroom	12'6" x 12'3"	153 sq. ft	Yes
11	Garage	22'2" x 17'2"	373 sq. ft	No
12	Bedroom	10'6" x 12'10"	121 sq. ft	Yes
13	Kitchen	13'8" x 11'2"	152 sq. ft	Yes
14	Entry	7'7" x 4'10"	62 sq. ft	Yes
15	Dining Area	11'2" x 12'6"	133 sq. ft	Yes
16	Bath	8'0" x 4'10"	39 sq. ft	Yes
17	W.i.c.	7'10" x 4'10"	30 sq. ft	Yes
18	Bath	8'1" x 4'10"	39 sq. ft	Yes
19	Living Room	19'4" x 14'11"	249 sq. ft	Yes
20	Foyer	7'7" x 13'6"	70 sq. ft	Yes

Scan captured on Sun, 25 Aug 2024 22:30:18 GMT

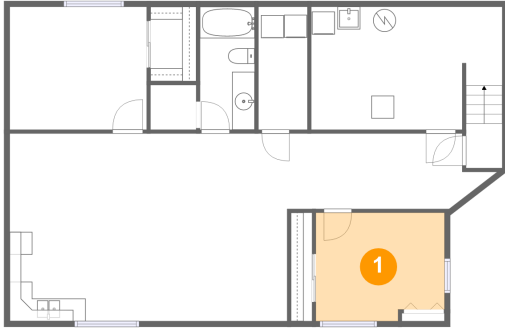
Information is calculated by CubiCasa technology; deemed highly reliable but not guaranteed.

**306 Philip Lee Crescent, Peguis, Transcona,
Winnipeg, Manitoba, Canada, R3W 0J3**

#	Room name	Dimensions	Area (sqft)	Counted as Living Area
21	Bedroom	11'2" x 9'8"	104 sq. ft	Yes
22	Hall	16'5" x 6'2"	64 sq. ft	Yes

306 Philip Lee Crescent, Peguis, Transcona, Winnipeg, Manitoba, Canada, R3W 0J3

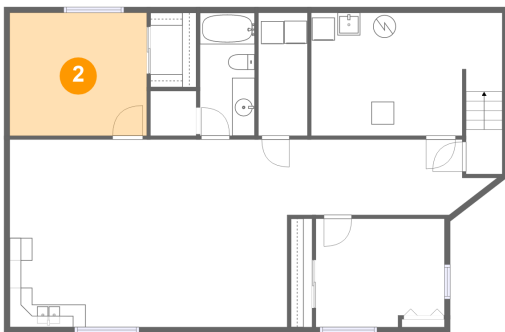
1 Floor 1 - Bedroom



Dimensions: 11'4" x 9'7"
Area: 104 sq. ft
Counted as Living Area:
Yes

Heated: Yes
Finished: Yes
Enclosed: Yes
Contiguous:
Yes
Permitted: Yes
Wet Space: No
Addition: No
Conversion: No

2 Floor 1 - Bedroom

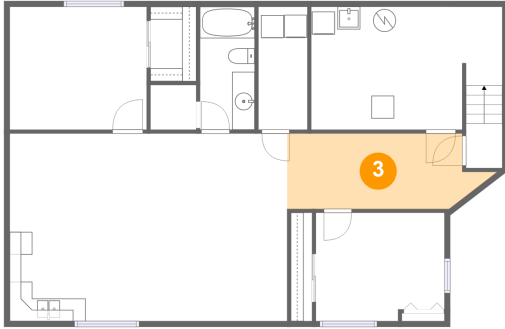


Dimensions: 12'1" x 10'10"
Area: 131 sq. ft
Counted as Living Area:
Yes

Heated: Yes
Finished: Yes
Enclosed: Yes
Contiguous:
Yes
Permitted: Yes
Wet Space: No
Addition: No
Conversion: No

306 Philip Lee Crescent, Peguis, Transcona, Winnipeg, Manitoba, Canada, R3W 0J3

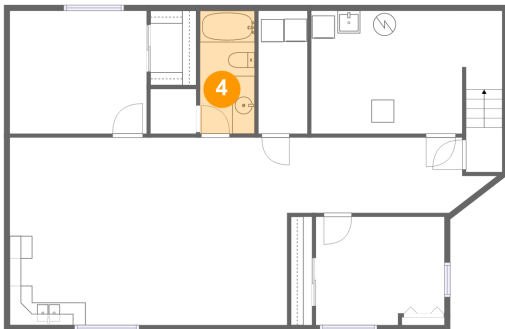
3 Floor 1 - Hall



Dimensions: 15'6" x 6'8"
Area: 106 sq. ft
Counted as Living Area:
Yes

Heated: Yes
Finished: Yes
Enclosed: Yes
Contiguous:
Yes
Permitted: Yes
Wet Space: No
Addition: No
Conversion: No

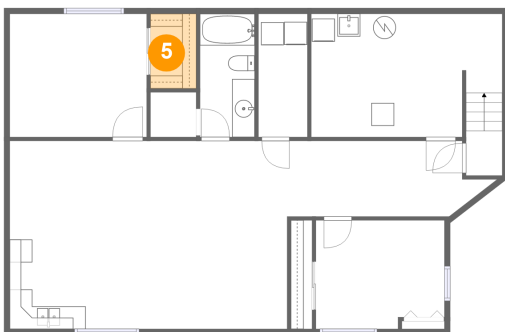
4 Floor 1 - Bath



Dimensions: 4'10" x 10'10"
Area: 52 sq. ft
Counted as Living Area: No

Heated: Yes
Finished: Yes
Enclosed: Yes
Contiguous: Yes
Permitted: Yes
Wet Space: Yes
Addition: No
Conversion: No

5 Floor 1 - W.i.c.

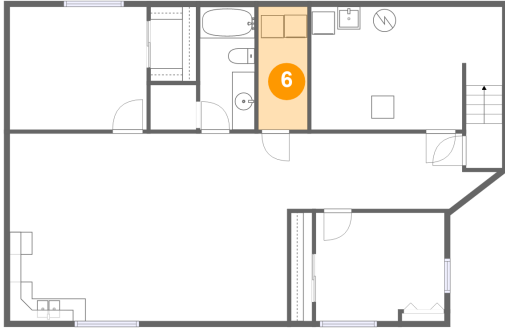


Dimensions: 4'1" x 6'7"
Area: 27 sq. ft
Counted as Living Area:
Yes

Heated: Yes
Finished: Yes
Enclosed: Yes
Contiguous:
Yes
Permitted: Yes
Wet Space: No
Addition: No
Conversion: No

306 Philip Lee Crescent, Peguis, Transcona, Winnipeg, Manitoba, Canada, R3W 0J3

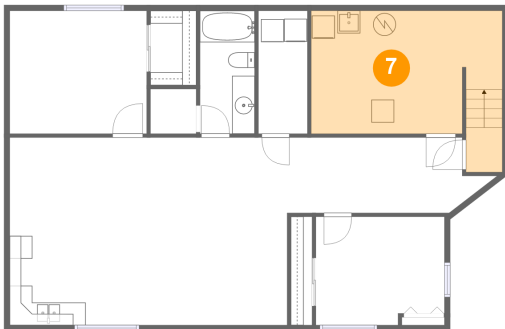
6 Floor 1 - Laundry



Dimensions: 4'4" x 10'10"
Area: 47 sq. ft
Counted as Living Area: No

Heated: No
Finished: No
Enclosed: Yes
Contiguous: Yes
Permitted: Yes
Wet Space: No
Addition: No
Conversion: No

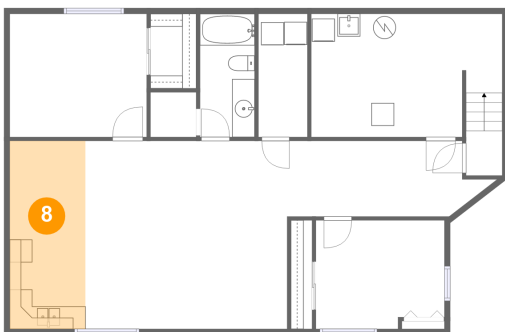
7 Floor 1 - Utility



Dimensions: 16'10" x 10'10"
Area: 192 sq. ft
Counted as Living Area: No

Heated: No
Finished: No
Enclosed: Yes
Contiguous: Yes
Permitted: Yes
Wet Space: No
Addition: No
Conversion: No

8 Floor 1 - Kitchen

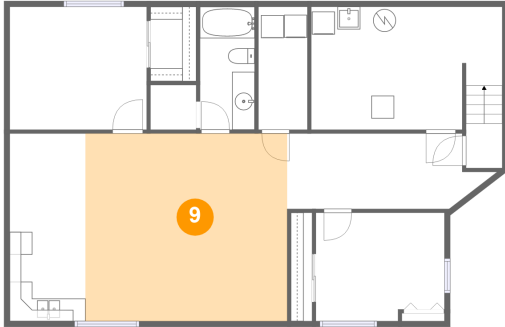


Dimensions: 6'8" x 16'7"
Area: 111 sq. ft
Counted as Living Area:
Yes

Heated: Yes
Finished: Yes
Enclosed: Yes
Contiguous:
Yes
Permitted: Yes
Wet Space: No
Addition: No
Conversion: No

306 Philip Lee Crescent, Peguis, Transcona, Winnipeg, Manitoba, Canada, R3W 0J3

9 Floor 1 - Recreation Room



Dimensions: 17'10" x 16'7"
Area: 295 sq. ft
Counted as Living Area:
Yes

Heated: Yes
Finished: Yes
Enclosed: Yes
Contiguous:
Yes
Permitted: Yes
Wet Space: No
Addition: No
Conversion: No

10 Floor 2 - Primary Bedroom



Dimensions: 12'6" x 12'3"
Area: 153 sq. ft
Counted as Living Area:
Yes

Heated: Yes
Finished: Yes
Enclosed: Yes
Contiguous:
Yes
Permitted: Yes
Wet Space: No
Addition: No
Conversion: No

11 Floor 2 - Garage



Dimensions: 22'2" x 17'2"
Area: 373 sq. ft
Counted as Living Area: No

Heated: No
Finished: No
Enclosed: Yes
Contiguous: Yes
Permitted: Yes
Wet Space: No
Addition: No
Conversion: No

306 Philip Lee Crescent, Peguis, Transcona, Winnipeg, Manitoba, Canada, R3W 0J3

12 Floor 2 - Bedroom



Dimensions: 10'6" x 12'10"
Area: 121 sq. ft
Counted as Living Area:
Yes

Heated: Yes
Finished: Yes
Enclosed: Yes
Contiguous:
Yes
Permitted: Yes
Wet Space: No
Addition: No
Conversion: No

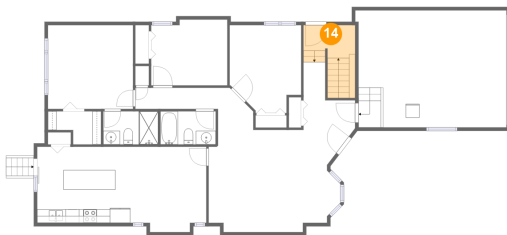
13 Floor 2 - Kitchen



Dimensions: 13'8" x 11'2"
Area: 152 sq. ft
Counted as Living Area:
Yes

Heated: Yes
Finished: Yes
Enclosed: Yes
Contiguous:
Yes
Permitted: Yes
Wet Space: No
Addition: No
Conversion: No

14 Floor 2 - Entry

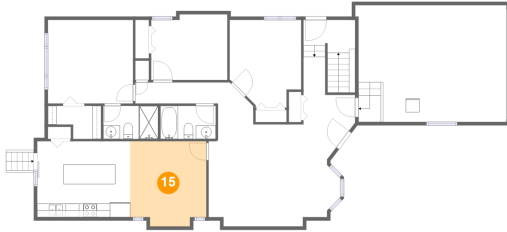


Dimensions: 7'7" x 4'10"
Area: 62 sq. ft
Counted as Living Area:
Yes

Heated: Yes
Finished: Yes
Enclosed: Yes
Contiguous:
Yes
Permitted: Yes
Wet Space: No
Addition: No
Conversion: No

306 Philip Lee Crescent, Peguis, Transcona, Winnipeg, Manitoba, Canada, R3W 0J3

15 Floor 2 - Dining Area



Dimensions: 11'2" x 12'6"
Area: 133 sq. ft
Counted as Living Area:
Yes

Heated: Yes
Finished: Yes
Enclosed: Yes
Contiguous:
Yes
Permitted: Yes
Wet Space: No
Addition: No
Conversion: No

16 Floor 2 - Bath



Dimensions: 8'0" x 4'10"
Area: 39 sq. ft
Counted as Living Area:
Yes

Heated: Yes
Finished: Yes
Enclosed: Yes
Contiguous:
Yes
Permitted: Yes
Wet Space: Yes
Addition: No
Conversion: No

17 Floor 2 - W.i.c.



Dimensions: 7'10" x 4'10"
Area: 30 sq. ft
Counted as Living Area:
Yes

Heated: Yes
Finished: Yes
Enclosed: Yes
Contiguous:
Yes
Permitted: Yes
Wet Space: No
Addition: No
Conversion: No

306 Philip Lee Crescent, Peguis, Transcona, Winnipeg, Manitoba, Canada, R3W 0J3

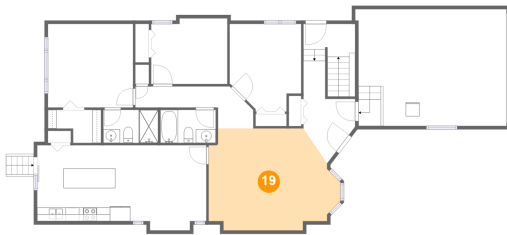
18 Floor 2 - Bath



Dimensions: 8'1" x 4'10"
Area: 39 sq. ft
Counted as Living Area:
Yes

Heated: Yes
Finished: Yes
Enclosed: Yes
Contiguous:
Yes
Permitted: Yes
Wet Space: Yes
Addition: No
Conversion: No

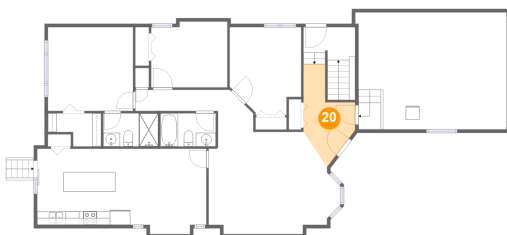
19 Floor 2 - Living Room



Dimensions: 19'4" x 14'11"
Area: 249 sq. ft
Counted as Living Area:
Yes

Heated: Yes
Finished: Yes
Enclosed: Yes
Contiguous:
Yes
Permitted: Yes
Wet Space: No
Addition: No
Conversion: No

20 Floor 2 - Foyer



Dimensions: 7'7" x 13'6"
Area: 70 sq. ft
Counted as Living Area:
Yes

Heated: Yes
Finished: Yes
Enclosed: Yes
Contiguous:
Yes
Permitted: Yes
Wet Space: No
Addition: No
Conversion: No

306 Philip Lee Crescent, Peguis, Transcona, Winnipeg, Manitoba, Canada, R3W 0J3

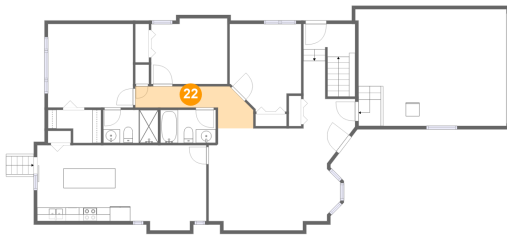
21 Floor 2 - Bedroom



Dimensions: 11'2" x 9'8"
Area: 104 sq. ft
Counted as Living Area:
Yes

Heated: Yes
Finished: Yes
Enclosed: Yes
Contiguous:
Yes
Permitted: Yes
Wet Space: No
Addition: No
Conversion: No

22 Floor 2 - Hall



Dimensions: 16'5" x 6'2"
Area: 64 sq. ft
Counted as Living Area:
Yes

Heated: Yes
Finished: Yes
Enclosed: Yes
Contiguous:
Yes
Permitted: Yes
Wet Space: No
Addition: No
Conversion: No