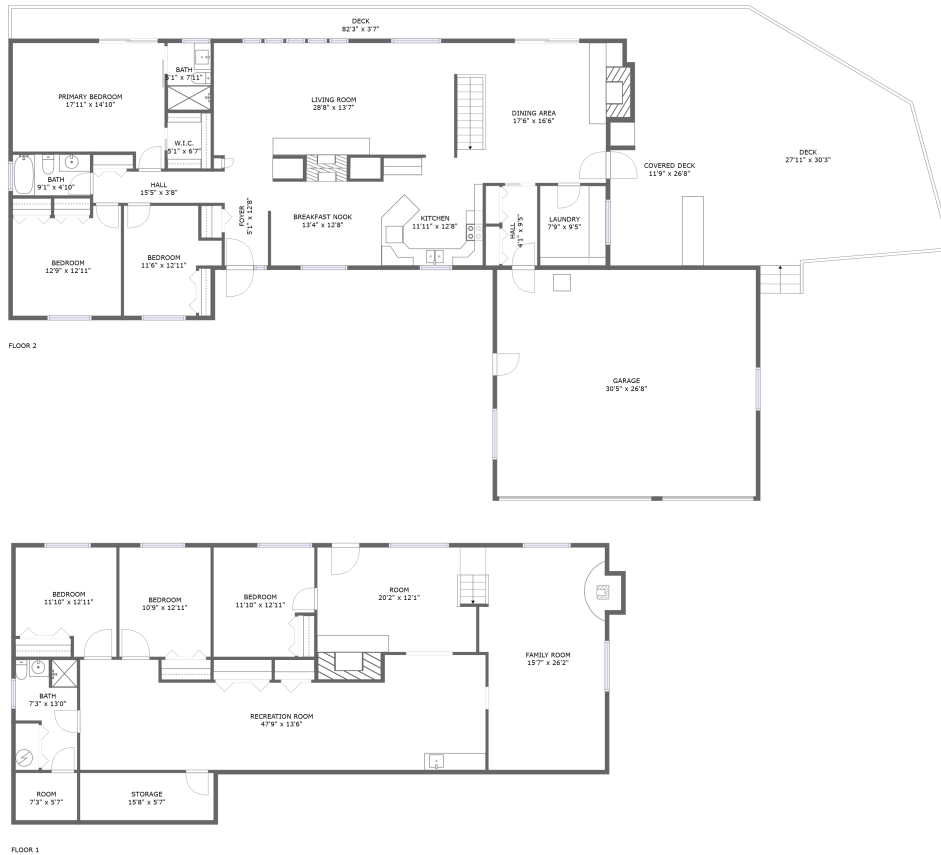


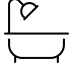



1544 Juniper Drive, Pocatello, Bannock County, Idaho, United States, 83204



Property Summary

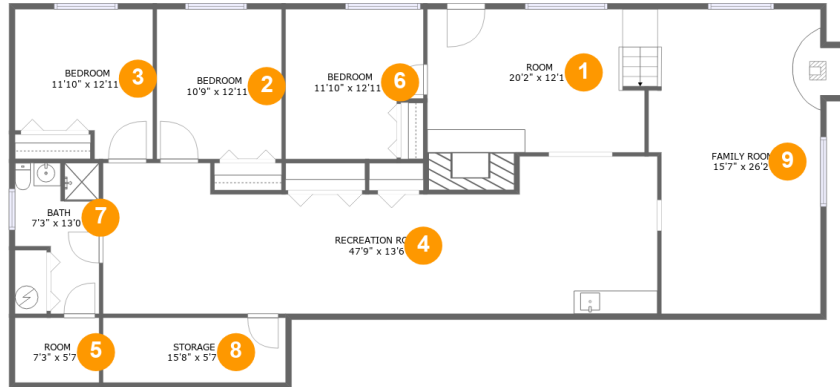
 **1** garages  **6** bedrooms  **3** bathrooms  **0** half baths

 **2** floors

 **4,009** Gross Living Area sqft

 **6,254** total sqft

1544 Juniper Drive, Pocatello, Bannock County, Idaho, United States, 83204



Room Dimensions

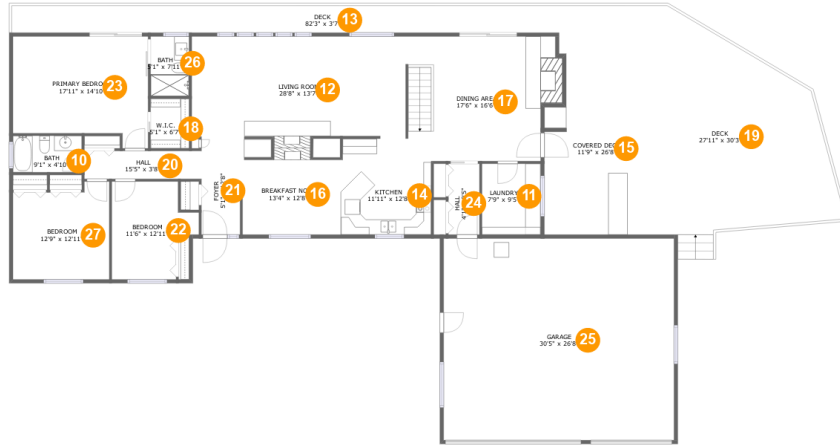
Floor 1

Total sqft: 2068

Living area: 1920

#	Room name	Dimensions	Area (sqft)	Counted as Living Area
1	Room	20'2" x 12'1"	270 sq. ft	Yes
2	Bedroom	10'9" x 12'11"	139 sq. ft	Yes
3	Bedroom	11'10" x 12'11"	136 sq. ft	Yes
4	Recreation Room	47'9" x 13'6"	555 sq. ft	Yes
5	Room	7'3" x 5'7"	40 sq. ft	No
6	Bedroom	11'10" x 12'11"	141 sq. ft	Yes
7	Bath	7'3" x 13'0"	75 sq. ft	Yes
8	Storage	15'8" x 5'7"	88 sq. ft	No
9	Family Room	15'7" x 26'2"	367 sq. ft	Yes

1544 Juniper Drive, Pocatello, Bannock County, Idaho, United States, 83204



Room Dimensions

Floor 2

Total sqft: 4186

Living area: 2089

#	Room name	Dimensions	Area (sqft)	Counted as Living Area
10	Bath	9'1" x 4'10"	44 sq. ft	Yes
11	Laundry	7'9" x 9'5"	73 sq. ft	Yes
12	Living Room	28'8" x 13'7"	393 sq. ft	Yes
13	Deck	82'3" x 3'7"	295 sq. ft	No
14	Kitchen	11'11" x 12'8"	142 sq. ft	Yes
15	Covered Deck	11'9" x 26'8"	287 sq. ft	No
16	Breakfast Nook	13'4" x 12'8"	140 sq. ft	Yes
17	Dining Area	17'6" x 16'6"	312 sq. ft	Yes
18	W.i.c.	5'1" x 6'7"	34 sq. ft	Yes
19	Deck	27'11" x 30'3"	644 sq. ft	No
20	Hall	15'5" x 3'8"	57 sq. ft	Yes

Scan captured on Tue, 25 Jun 2024 18:50:26 GMT

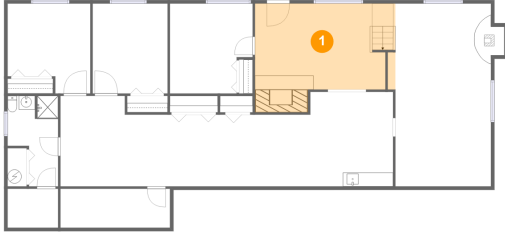
Information is calculated by CubiCasa technology; deemed highly reliable but not guaranteed.

**1544 Juniper Drive, Pocatello, Bannock County,
Idaho, United States, 83204**

#	Room name	Dimensions	Area (sqft)	Counted as Living Area
21	Foyer	5'1" x 12'8"	65 sq. ft	Yes
22	Bedroom	11'6" x 12'11"	120 sq. ft	Yes
23	Primary Bedroom	17'11" x 14'10"	235 sq. ft	Yes
24	Hall	4'1" x 9'5"	39 sq. ft	Yes
25	Garage	30'5" x 26'8"	813 sq. ft	No
26	Bath	5'1" x 7'11"	40 sq. ft	Yes
27	Bedroom	12'9" x 12'11"	151 sq. ft	Yes

1544 Juniper Drive, Pocatello, Bannock County, Idaho, United States, 83204

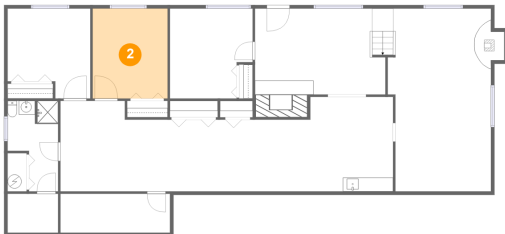
1 Floor 1 - Room



Dimensions: 20'2" x 12'1"
Area: 270 sq. ft
Counted as Living Area:
Yes

Heated: Yes
Finished: Yes
Enclosed: Yes
Contiguous:
Yes
Permitted: Yes
Wet Space: No
Addition: No
Conversion: No

2 Floor 1 - Bedroom

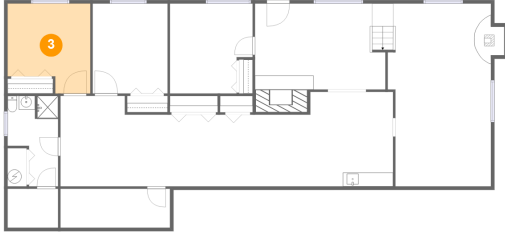


Dimensions: 10'9" x 12'11"
Area: 139 sq. ft
Counted as Living Area:
Yes

Heated: Yes
Finished: Yes
Enclosed: Yes
Contiguous:
Yes
Permitted: Yes
Wet Space: No
Addition: No
Conversion: No

1544 Juniper Drive, Pocatello, Bannock County, Idaho, United States, 83204

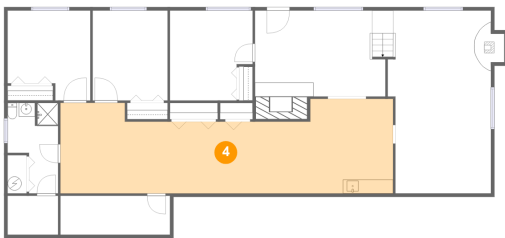
3 Floor 1 - Bedroom



Dimensions: 11'10" x 12'11"
Area: 136 sq. ft
Counted as Living Area:
Yes

Heated: Yes
Finished: Yes
Enclosed: Yes
Contiguous:
Yes
Permitted: Yes
Wet Space: No
Addition: No
Conversion: No

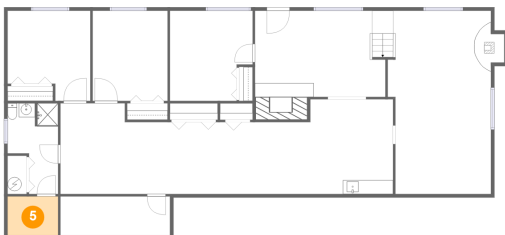
4 Floor 1 - Recreation Room



Dimensions: 47'9" x 13'6"
Area: 555 sq. ft
Counted as Living Area:
Yes

Heated: Yes
Finished: Yes
Enclosed: Yes
Contiguous:
Yes
Permitted: Yes
Wet Space: No
Addition: No
Conversion: No

5 Floor 1 - Room

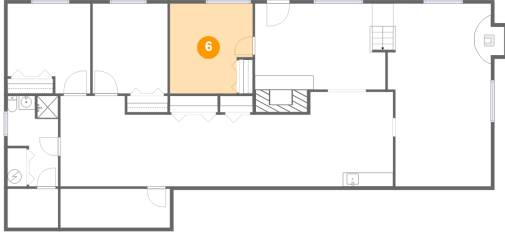


Dimensions: 7'3" x 5'7"
Area: 40 sq. ft
Counted as Living Area: No

Heated: No
Finished: No
Enclosed: Yes
Contiguous: Yes
Permitted: Yes
Wet Space: No
Addition: No
Conversion: No

1544 Juniper Drive, Pocatello, Bannock County, Idaho, United States, 83204

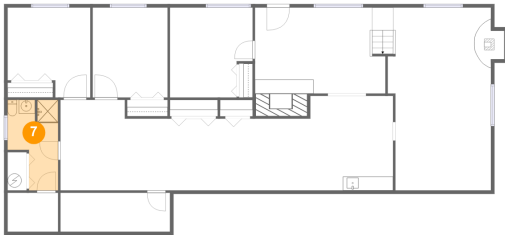
6 Floor 1 - Bedroom



Dimensions: 11'10" x 12'11"
Area: 141 sq. ft
Counted as Living Area:
Yes

Heated: Yes
Finished: Yes
Enclosed: Yes
Contiguous:
Yes
Permitted: Yes
Wet Space: No
Addition: No
Conversion: No

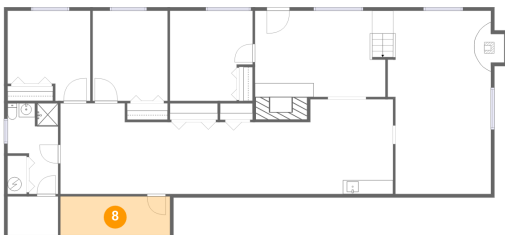
7 Floor 1 - Bath



Dimensions: 7'3" x 13'0"
Area: 75 sq. ft
Counted as Living Area:
Yes

Heated: Yes
Finished: Yes
Enclosed: Yes
Contiguous:
Yes
Permitted: Yes
Wet Space: Yes
Addition: No
Conversion: No

8 Floor 1 - Storage

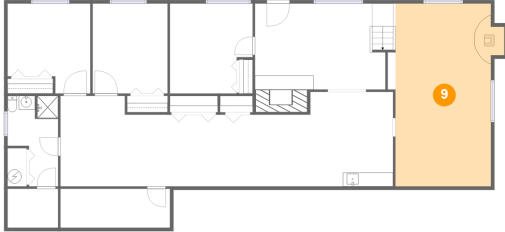


Dimensions: 15'8" x 5'7"
Area: 88 sq. ft
Counted as Living Area: No

Heated: No
Finished: No
Enclosed: No
Contiguous: Yes
Permitted: Yes
Wet Space: No
Addition: No
Conversion: No

1544 Juniper Drive, Pocatello, Bannock County, Idaho, United States, 83204

9 Floor 1 - Family Room



Dimensions: 15'7" x 26'2"
Area: 367 sq. ft
Counted as Living Area:
Yes

Heated: Yes
Finished: Yes
Enclosed: Yes
Contiguous:
Yes
Permitted: Yes
Wet Space: No
Addition: No
Conversion: No

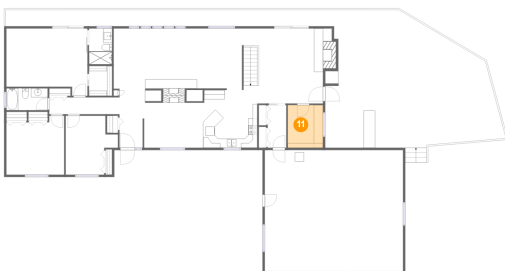
10 Floor 2 - Bath



Dimensions: 9'1" x 4'10"
Area: 44 sq. ft
Counted as Living Area:
Yes

Heated: Yes
Finished: Yes
Enclosed: Yes
Contiguous:
Yes
Permitted: Yes
Wet Space: Yes
Addition: No
Conversion: No

11 Floor 2 - Laundry

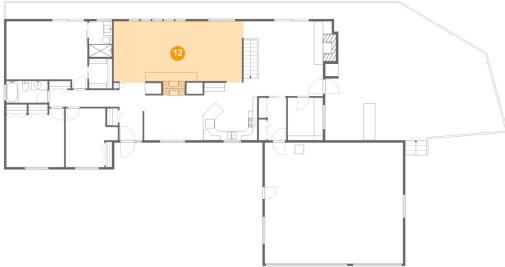


Dimensions: 7'9" x 9'5"
Area: 73 sq. ft
Counted as Living Area:
Yes

Heated: Yes
Finished: Yes
Enclosed: Yes
Contiguous:
Yes
Permitted: Yes
Wet Space: No
Addition: No
Conversion: No

1544 Juniper Drive, Pocatello, Bannock County, Idaho, United States, 83204

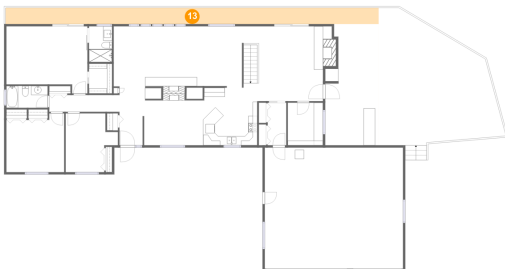
12 Floor 2 - Living Room



Dimensions: 28'8" x 13'7"
Area: 393 sq. ft
Counted as Living Area:
Yes

Heated: Yes
Finished: Yes
Enclosed: Yes
Contiguous:
Yes
Permitted: Yes
Wet Space: No
Addition: No
Conversion: No

13 Floor 2 - Deck



Dimensions: 82'3" x 3'7"
Area: 295 sq. ft
Counted as Living Area: No

Heated: No
Finished: Yes
Enclosed: No
Contiguous: Yes
Permitted: Yes
Wet Space: No
Addition: No
Conversion: No

14 Floor 2 - Kitchen

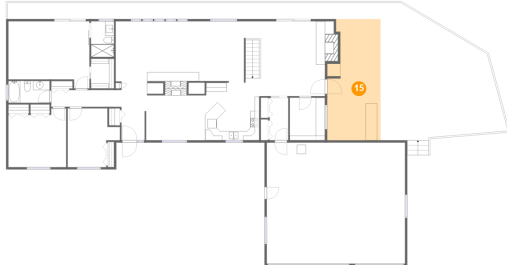


Dimensions: 11'11" x 12'8"
Area: 142 sq. ft
Counted as Living Area:
Yes

Heated: Yes
Finished: Yes
Enclosed: Yes
Contiguous:
Yes
Permitted: Yes
Wet Space: No
Addition: No
Conversion: No

1544 Juniper Drive, Pocatello, Bannock County, Idaho, United States, 83204

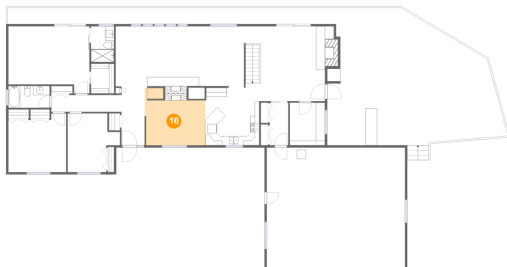
15 Floor 2 - Covered Deck



Dimensions: 11'9" x 26'8"
Area: 287 sq. ft
Counted as Living Area: No

Heated: No
Finished: Yes
Enclosed: No
Contiguous: Yes
Permitted: Yes
Wet Space: No
Addition: No
Conversion: No

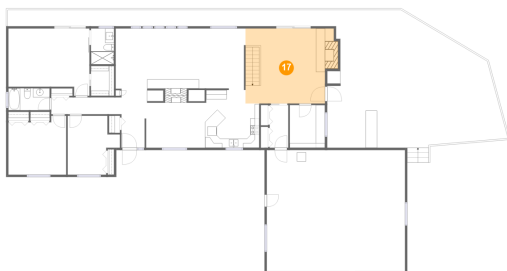
16 Floor 2 - Breakfast Nook



Dimensions: 13'4" x 12'8"
Area: 140 sq. ft
Counted as Living Area: Yes

Heated: Yes
Finished: Yes
Enclosed: Yes
Contiguous: Yes
Permitted: Yes
Wet Space: No
Addition: No
Conversion: No

17 Floor 2 - Dining Area



Dimensions: 17'6" x 16'6"
Area: 312 sq. ft
Counted as Living Area: Yes

Heated: Yes
Finished: Yes
Enclosed: Yes
Contiguous: Yes
Permitted: Yes
Wet Space: No
Addition: No
Conversion: No

1544 Juniper Drive, Pocatello, Bannock County, Idaho, United States, 83204

18 Floor 2 - W.i.c.



Dimensions: 5'1" x 6'7"
Area: 34 sq. ft
Counted as Living Area:
Yes

Heated: Yes
Finished: Yes
Enclosed: Yes
Contiguous:
Yes
Permitted: Yes
Wet Space: No
Addition: No
Conversion: No

19 Floor 2 - Deck



Dimensions: 27'11" x 30'3"
Area: 644 sq. ft
Counted as Living Area: No

Heated: No
Finished: Yes
Enclosed: No
Contiguous: Yes
Permitted: Yes
Wet Space: No
Addition: No
Conversion: No

20 Floor 2 - Hall

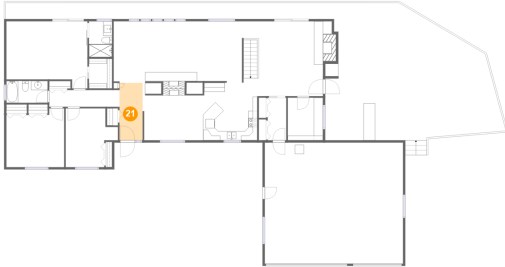


Dimensions: 15'5" x 3'8"
Area: 57 sq. ft
Counted as Living Area:
Yes

Heated: Yes
Finished: Yes
Enclosed: Yes
Contiguous:
Yes
Permitted: Yes
Wet Space: No
Addition: No
Conversion: No

1544 Juniper Drive, Pocatello, Bannock County, Idaho, United States, 83204

21 Floor 2 - Foyer



Dimensions: 5'1" x 12'8"
Area: 65 sq. ft
Counted as Living Area:
Yes

Heated: Yes
Finished: Yes
Enclosed: Yes
Contiguous:
Yes
Permitted: Yes
Wet Space: No
Addition: No
Conversion: No

22 Floor 2 - Bedroom



Dimensions: 11'6" x 12'11"
Area: 120 sq. ft
Counted as Living Area:
Yes

Heated: Yes
Finished: Yes
Enclosed: Yes
Contiguous:
Yes
Permitted: Yes
Wet Space: No
Addition: No
Conversion: No

23 Floor 2 - Primary Bedroom



Dimensions: 17'11" x 14'10"
Area: 235 sq. ft
Counted as Living Area:
Yes

Heated: Yes
Finished: Yes
Enclosed: Yes
Contiguous:
Yes
Permitted: Yes
Wet Space: No
Addition: No
Conversion: No

1544 Juniper Drive, Pocatello, Bannock County, Idaho, United States, 83204

24 Floor 2 - Hall



Dimensions: 4'1" x 9'5"
Area: 39 sq. ft
Counted as Living Area: Yes

Heated: Yes
Finished: Yes
Enclosed: Yes
Contiguous: Yes
Permitted: Yes
Wet Space: No
Addition: No
Conversion: No

25 Floor 2 - Garage



Dimensions: 30'5" x 26'8"
Area: 813 sq. ft
Counted as Living Area: No

Heated: No
Finished: No
Enclosed: Yes
Contiguous: Yes
Permitted: Yes
Wet Space: No
Addition: No
Conversion: No

26 Floor 2 - Bath



Dimensions: 5'1" x 7'11"
Area: 40 sq. ft
Counted as Living Area: Yes

Heated: Yes
Finished: Yes
Enclosed: Yes
Contiguous: Yes
Permitted: Yes
Wet Space: Yes
Addition: No
Conversion: No

1544 Juniper Drive, Pocatello, Bannock County, Idaho, United States, 83204

27 Floor 2 - Bedroom



Dimensions: 12'9" x 12'11"
Area: 151 sq. ft
Counted as Living Area:
Yes

Heated: Yes
Finished: Yes
Enclosed: Yes
Contiguous:
Yes
Permitted: Yes
Wet Space: No
Addition: No
Conversion: No