



4275 Southeast 61st Avenue, Hillsboro, Washington County, Oregon, United States, 97123



Property summary

 **1** Garages

 **3** Bedrooms

 **3** Bathrooms

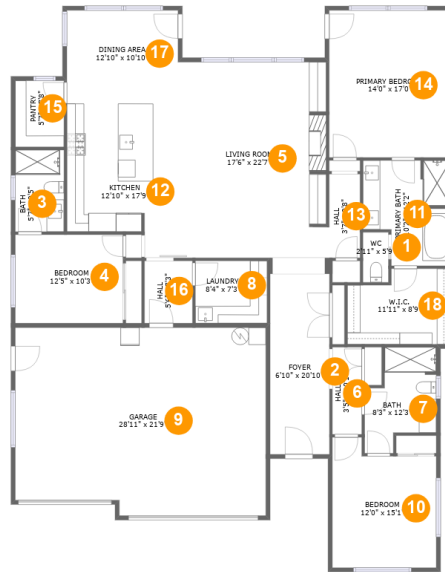
 **0** Half baths

 **1** Floors

 **2,236**
Gross living
area sqft

 **2,872**
Total sqft

4275 Southeast 61st Avenue, Hillsboro, Washington County, Oregon, United States, 97123



Room dimensions

Floor 1

Total sqft: 2872 Living area: 2236

#		Dimensions	sqft	Counted as living area
1	WC	2'11" x 5'9"	17 sq. ft	Yes
2	Foyer	6'10" x 20'10"	143 sq. ft	Yes
3	Bath	5'7" x 9'5"	53 sq. ft	Yes
4	Bedroom	12'5" x 10'3"	127 sq. ft	Yes
5	Living Room	17'6" x 22'7"	386 sq. ft	Yes
6	Hall	3'5" x 10'1"	34 sq. ft	Yes
7	Bath	8'3" x 12'3"	78 sq. ft	Yes
8	Laundry	8'4" x 7'3"	60 sq. ft	Yes
9	Garage	28'11" x 21'9"	607 sq. ft	No
10	Bedroom	12'0" x 15'1"	162 sq. ft	Yes
11	Primary Bath	10'2" x 12'2"	108 sq. ft	Yes

**4275 Southeast 61st Avenue, Hillsboro, Washington
County, Oregon, United States, 97123**

#		Dimensions	sqft	Counted as living area
12	Kitchen	12'10" x 17'9"	200 sq. ft	Yes
13	Hall	3'7" x 9'8"	34 sq. ft	Yes
14	Primary Bedroom	14'0" x 17'0"	238 sq. ft	Yes
15	Pantry	5'7" x 7'8"	43 sq. ft	Yes
16	Hall	5'6" x 7'3"	40 sq. ft	Yes
17	Dining Area	12'10" x 10'10"	139 sq. ft	Yes
18	W.I.C.	11'11" x 8'9"	95 sq. ft	Yes

4275 Southeast 61st Avenue, Hillsboro, Washington County, Oregon, United States, 97123

1 Floor 1 - WC



Dimensions: 2'11" x 5'9"
Area: 17 sq. ft
Counted as living area: Yes

Heated: Yes
Finished: Yes
Enclosed: Yes
Contiguous: Yes
Permitted: Yes
Wet space: Yes
Addition: No
Conversion: No

2 Floor 1 - Foyer



Dimensions: 6'10" x 20'10"
Area: 143 sq. ft
Counted as living area: Yes

Heated: Yes
Finished: Yes
Enclosed: Yes
Contiguous: Yes
Permitted: Yes
Wet space: No
Addition: No
Conversion: No

4275 Southeast 61st Avenue, Hillsboro, Washington County, Oregon, United States, 97123

3 Floor 1 - Bath



Dimensions: 5'7" x 9'5"
Area: 53 sq. ft
Counted as living area: Yes

Heated: Yes
Finished: Yes
Enclosed: Yes
Contiguous: Yes
Permitted: Yes
Wet space: Yes
Addition: No
Conversion: No

4 Floor 1 - Bedroom



Dimensions: 12'5" x 10'3"
Area: 127 sq. ft
Counted as living area: Yes

Heated: Yes
Finished: Yes
Enclosed: Yes
Contiguous: Yes
Permitted: Yes
Wet space: No
Addition: No
Conversion: No

5 Floor 1 - Living Room



Dimensions: 17'6" x 22'7"
Area: 386 sq. ft
Counted as living area: Yes

Heated: Yes
Finished: Yes
Enclosed: Yes
Contiguous: Yes
Permitted: Yes
Wet space: No
Addition: No
Conversion: No

4275 Southeast 61st Avenue, Hillsboro, Washington County, Oregon, United States, 97123

6 Floor 1 - Hall



Dimensions: 3'5" x 10'1"
Area: 34 sq. ft
Counted as living area: Yes

Heated: Yes
Finished: Yes
Enclosed: Yes
Contiguous: Yes
Permitted: Yes
Wet space: No
Addition: No
Conversion: No

7 Floor 1 - Bath



Dimensions: 8'3" x 12'3"
Area: 78 sq. ft
Counted as living area: Yes

Heated: Yes
Finished: Yes
Enclosed: Yes
Contiguous: Yes
Permitted: Yes
Wet space: Yes
Addition: No
Conversion: No

8 Floor 1 - Laundry

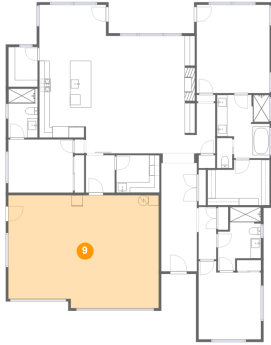


Dimensions: 8'4" x 7'3"
Area: 60 sq. ft
Counted as living area: Yes

Heated: Yes
Finished: Yes
Enclosed: Yes
Contiguous: Yes
Permitted: Yes
Wet space: No
Addition: No
Conversion: No

4275 Southeast 61st Avenue, Hillsboro, Washington County, Oregon, United States, 97123

9 Floor 1 - Garage



Dimensions: 28'11" x 21'9"
Area: 607 sq. ft
Counted as living area: No

Heated: No
Finished: No
Enclosed: Yes
Contiguous: Yes
Permitted: Yes
Wet space: No
Addition: No
Conversion: No

10 Floor 1 - Bedroom



Dimensions: 12'0" x 15'1"
Area: 162 sq. ft
Counted as living area: Yes

Heated: Yes
Finished: Yes
Enclosed: Yes
Contiguous: Yes
Permitted: Yes
Wet space: No
Addition: No
Conversion: No

11 Floor 1 - Primary Bath

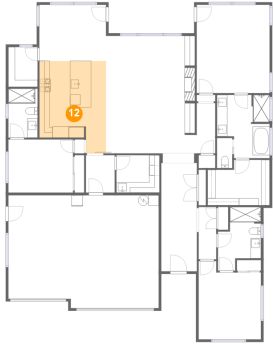


Dimensions: 10'2" x 12'2"
Area: 108 sq. ft
Counted as living area: Yes

Heated: Yes
Finished: Yes
Enclosed: Yes
Contiguous: Yes
Permitted: Yes
Wet space: Yes
Addition: No
Conversion: No

4275 Southeast 61st Avenue, Hillsboro, Washington County, Oregon, United States, 97123

12 Floor 1 - Kitchen



Dimensions: 12'10" x 17'9"
Area: 200 sq. ft
Counted as living area: Yes

Heated: Yes
Finished: Yes
Enclosed: Yes
Contiguous: Yes
Permitted: Yes
Wet space: No
Addition: No
Conversion: No

13 Floor 1 - Hall



Dimensions: 3'7" x 9'8"
Area: 34 sq. ft
Counted as living area: Yes

Heated: Yes
Finished: Yes
Enclosed: Yes
Contiguous: Yes
Permitted: Yes
Wet space: No
Addition: No
Conversion: No

14 Floor 1 - Primary Bedroom



Dimensions: 14'0" x 17'0"
Area: 238 sq. ft
Counted as living area: Yes

Heated: Yes
Finished: Yes
Enclosed: Yes
Contiguous: Yes
Permitted: Yes
Wet space: No
Addition: No
Conversion: No

4275 Southeast 61st Avenue, Hillsboro, Washington County, Oregon, United States, 97123

15 Floor 1 - Pantry



Dimensions: 5'7" x 7'8"
Area: 43 sq. ft
Counted as living area: Yes

Heated: Yes
Finished: Yes
Enclosed: Yes
Contiguous: Yes
Permitted: Yes
Wet space: No
Addition: No
Conversion: No

16 Floor 1 - Hall



Dimensions: 5'6" x 7'3"
Area: 40 sq. ft
Counted as living area: Yes

Heated: Yes
Finished: Yes
Enclosed: Yes
Contiguous: Yes
Permitted: Yes
Wet space: No
Addition: No
Conversion: No

17 Floor 1 - Dining Area



Dimensions: 12'10" x 10'10"
Area: 139 sq. ft
Counted as living area: Yes

Heated: Yes
Finished: Yes
Enclosed: Yes
Contiguous: Yes
Permitted: Yes
Wet space: No
Addition: No
Conversion: No

**4275 Southeast 61st Avenue, Hillsboro, Washington
County, Oregon, United States, 97123**

18 Floor 1 - W.I.C.



Dimensions: 11'11" x 8'9"
Area: 95 sq. ft
Counted as living area: Yes

Heated: Yes
Finished: Yes
Enclosed: Yes
Contiguous: Yes
Permitted: Yes
Wet space: No
Addition: No
Conversion: No