

Home data report

37116 Snickersville Turnpike,Purcellville,VA,US



Total Area: 2292 sq. ft

Below Ground: 899 sq. ft, 1st Floor: 1393 sq. ft

Excluded: Screened porch 225 sq. ft, Porch 215 sq. ft, Fireplace 9 sq. ft, Walls: 164 sq. ft

Property summary

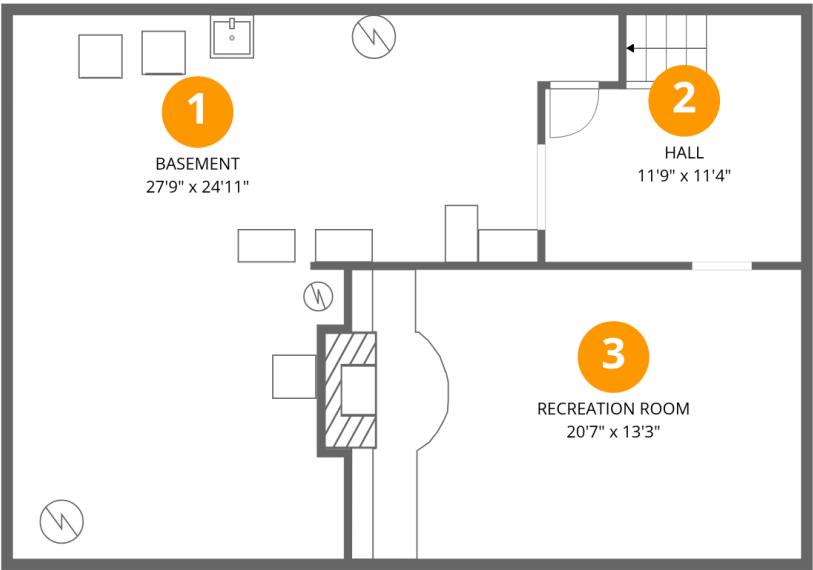
 **2** Floors

 **4** Bedrooms

 **2** Bathrooms

Home data report

37116 Snickersville Turnpike,Purcellville,VA,US



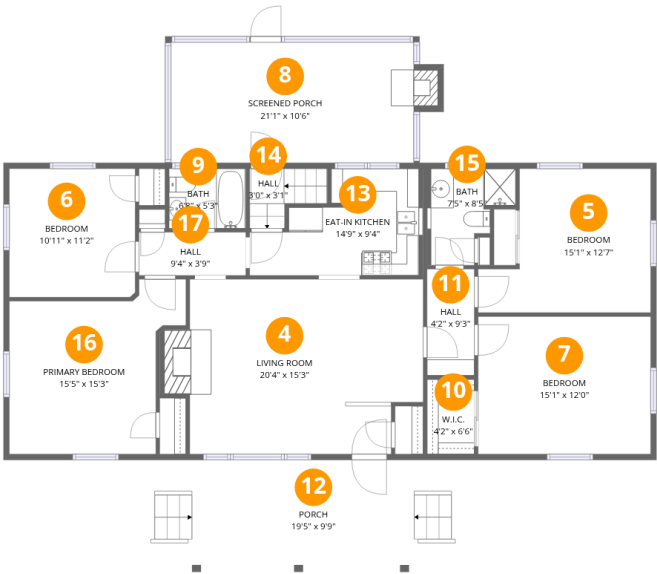
Room dimensions

Floor 1 Below grade Total:899sqft Excluded: 0sqft

#		Dimensions	sqft	Counted as living area
1	Basement	27'9" x 24'11"	481 sq. ft	Yes
2	Hall	11'9" x 11'4"	120 sq. ft	Yes
3	Recreation Room	20'7" x 13'3"	279 sq. ft	Yes

Home data report

37116 Snickersville Turnpike,Purcellville,VA,US



Room dimensions

Floor 2

Total:1393sqft Excluded: 449sqft

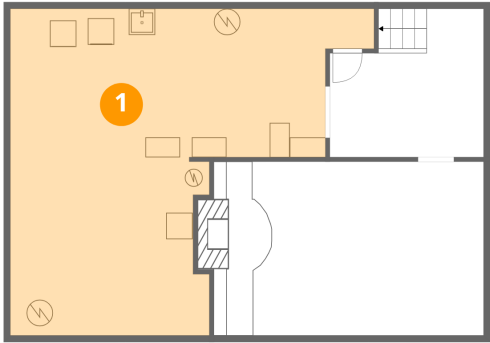
#		Dimensions	sqft	Counted as living area
4	Living Room	20'4" x 15'3"	313 sq. ft	Yes
5	Bedroom	15'1" x 12'7"	157 sq. ft	Yes
6	Bedroom	10'11" x 11'2"	123 sq. ft	Yes
7	Bedroom	15'1" x 12'0"	181 sq. ft	Yes
8	Screened Porch	21'1" x 10'6"	230 sq. ft	No
9	Bath	6'8" x 5'3"	35 sq. ft	Yes
10	W.I.C.	4'2" x 6'6"	27 sq. ft	Yes
11	Hall	4'2" x 9'3"	38 sq. ft	Yes
12	Porch	19'5" x 9'9"	215 sq. ft	No
13	Eat-in Kitchen	14'9" x 9'4"	109 sq. ft	Yes
14	Hall	3'0" x 3'1"	27 sq. ft	Yes

Home data report

37116 Snickersville Turnpike,Purcellville,VA,US

#		Dimensions	sqft	Counted as living area
15	Bath	7'5" x 8'5"	50 sq. ft	Yes
16	Primary Bedroom	15'5" x 15'3"	184 sq. ft	Yes
17	Hall	9'4" x 3'9"	35 sq. ft	Yes

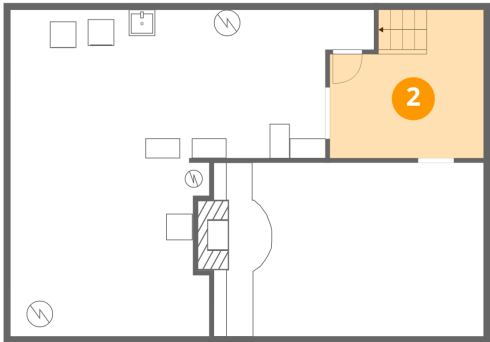
1 Floor 1 - Basement



Dimensions: 27'9" x 24'11"
Area: 481 sq. ft
Counted as living area: Yes

Heated: Yes
Finished: Yes
Enclosed: Yes
Contiguous: Yes
Permitted: Yes
Wet space: No
Addition: No
Conversion: No

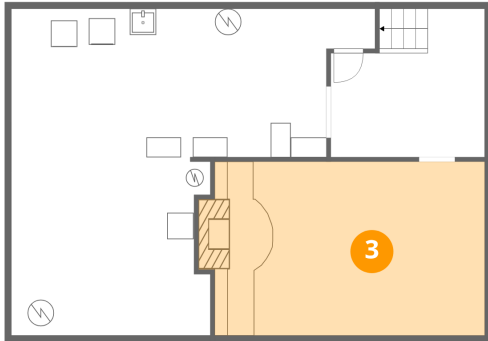
2 Floor 1 - Hall



Dimensions: 11'9" x 11'4"
Area: 120 sq. ft
Counted as living area: Yes

Heated: Yes
Finished: Yes
Enclosed: Yes
Contiguous: Yes
Permitted: Yes
Wet space: No
Addition: No
Conversion: No

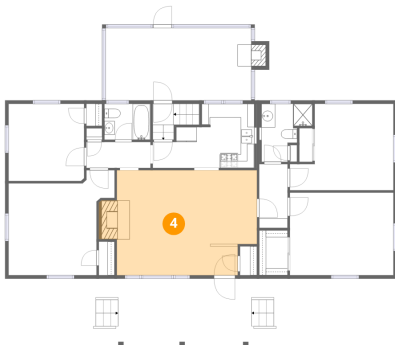
3 Floor 1 - Recreation Room



Dimensions: 20'7" x 13'3"
Area: 279 sq. ft
Counted as living area: Yes

Heated: Yes
Finished: Yes
Enclosed: Yes
Contiguous: Yes
Permitted: Yes
Wet space: No
Addition: No
Conversion: No

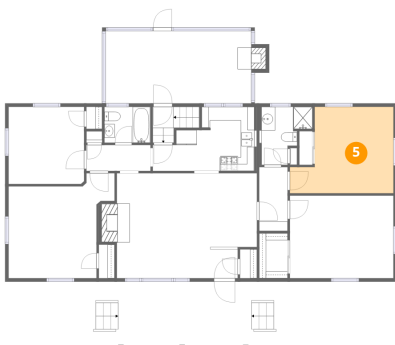
4 Floor 2 - Living Room



Dimensions: 20'4" x 15'3"
Area: 313 sq. ft
Counted as living area: Yes

Heated: Yes
Finished: Yes
Enclosed: Yes
Contiguous: Yes
Permitted: Yes
Wet space: No
Addition: No
Conversion: No

5 Floor 2 - Bedroom



Dimensions: 15'1" x 12'7"
Area: 157 sq. ft
Counted as living area: Yes

Heated: Yes
Finished: Yes
Enclosed: Yes
Contiguous: Yes
Permitted: Yes
Wet space: No
Addition: No
Conversion: No

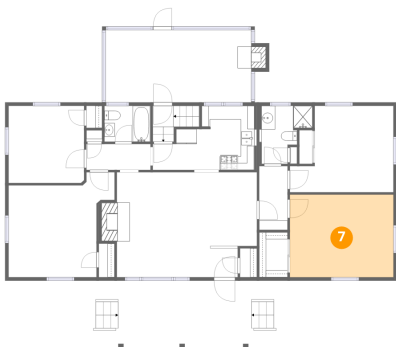
6 Floor 2 - Bedroom



Dimensions: 10'11" x 11'2"
Area: 123 sq. ft
Counted as living area: Yes

Heated: Yes
Finished: Yes
Enclosed: Yes
Contiguous: Yes
Permitted: Yes
Wet space: No
Addition: No
Conversion: No

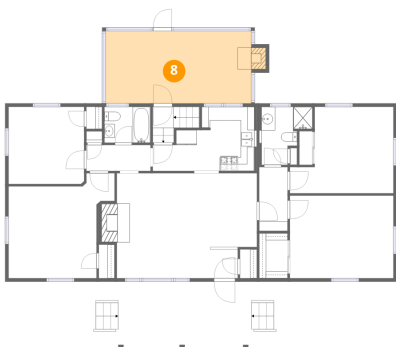
7 Floor 2 - Bedroom



Dimensions: 15'1" x 12'0"
Area: 181 sq. ft
Counted as living area: Yes

Heated: Yes
Finished: Yes
Enclosed: Yes
Contiguous: Yes
Permitted: Yes
Wet space: No
Addition: No
Conversion: No

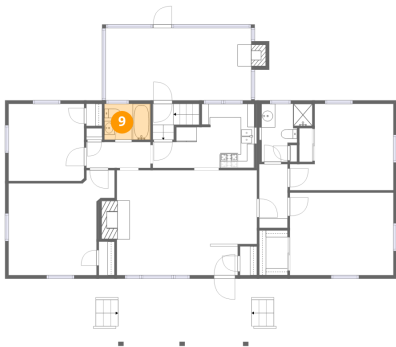
8 Floor 2 - Screened Porch



Dimensions: 21'1" x 10'6"
Area: 230 sq. ft
Counted as living area: No

Heated: No
Finished: No
Enclosed: No
Contiguous: Yes
Permitted: Yes
Wet space: No
Addition: No
Conversion: No

9 Floor 2 - Bath



Dimensions: 6'8" x 5'3"
Area: 35 sq. ft
Counted as living area: Yes

Heated: Yes
Finished: Yes
Enclosed: Yes
Contiguous: Yes
Permitted: Yes
Wet space: Yes
Addition: No
Conversion: No

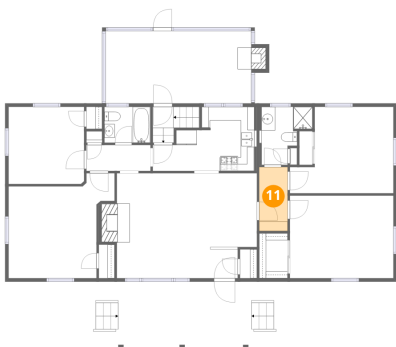
10 Floor 2 - W.I.C.



Dimensions: 4'2" x 6'6"
Area: 27 sq. ft
Counted as living area: Yes

Heated: Yes
Finished: Yes
Enclosed: Yes
Contiguous: Yes
Permitted: Yes
Wet space: No
Addition: No
Conversion: No

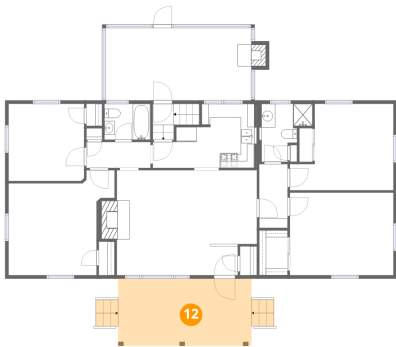
11 Floor 2 - Hall



Dimensions: 4'2" x 9'3"
Area: 38 sq. ft
Counted as living area: Yes

Heated: Yes
Finished: Yes
Enclosed: Yes
Contiguous: Yes
Permitted: Yes
Wet space: No
Addition: No
Conversion: No

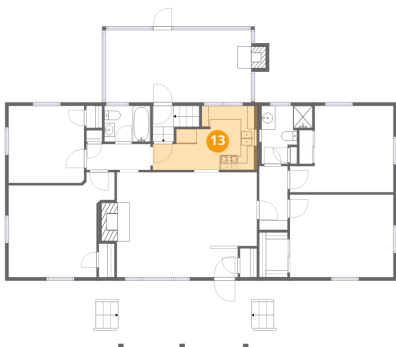
12 Floor 2 - Porch



Dimensions: 19'5" x 9'9"
Area: 215 sq. ft
Counted as living area: No

Heated: No
Finished: No
Enclosed: No
Contiguous: Yes
Permitted: Yes
Wet space: No
Addition: No
Conversion: No

13 Floor 2 - Eat-in Kitchen



Dimensions: 14'9" x 9'4"
Area: 109 sq. ft
Counted as living area: Yes

Heated: Yes
Finished: Yes
Enclosed: Yes
Contiguous: Yes
Permitted: Yes
Wet space: No
Addition: No
Conversion: No

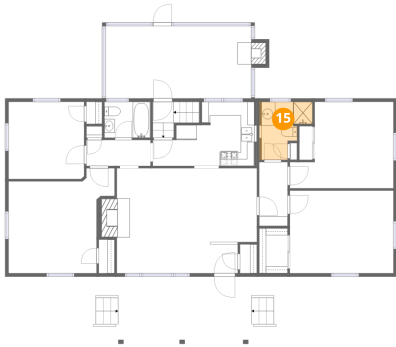
14 Floor 2 - Hall



Dimensions: 3'0" x 3'1"
Area: 27 sq. ft
Counted as living area: Yes

Heated: Yes
Finished: Yes
Enclosed: Yes
Contiguous: Yes
Permitted: Yes
Wet space: No
Addition: No
Conversion: No

15 Floor 2 - Bath



Dimensions: 7'5" x 8'5"
Area: 50 sq. ft
Counted as living area: Yes

Heated: Yes
Finished: Yes
Enclosed: Yes
Contiguous: Yes
Permitted: Yes
Wet space: Yes
Addition: No
Conversion: No

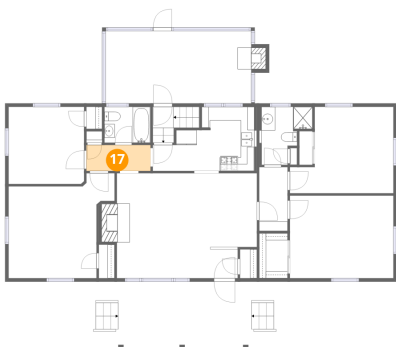
16 Floor 2 - Primary Bedroom



Dimensions: 15'5" x 15'3"
Area: 184 sq. ft
Counted as living area: Yes

Heated: Yes
Finished: Yes
Enclosed: Yes
Contiguous: Yes
Permitted: Yes
Wet space: No
Addition: No
Conversion: No

17 Floor 2 - Hall



Dimensions: 9'4" x 3'9"
Area: 35 sq. ft
Counted as living area: Yes

Heated: Yes
Finished: Yes
Enclosed: Yes
Contiguous: Yes
Permitted: Yes
Wet space: No
Addition: No
Conversion: No