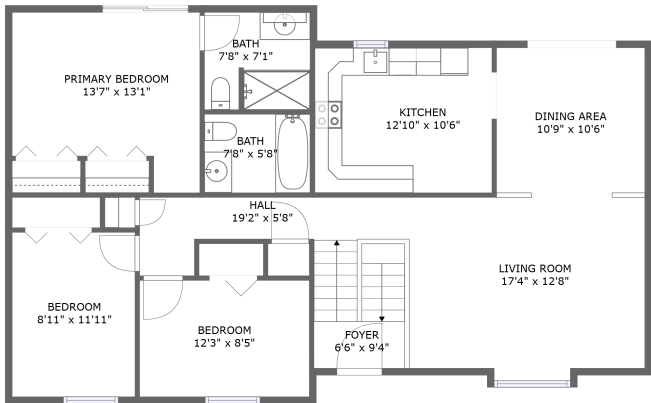
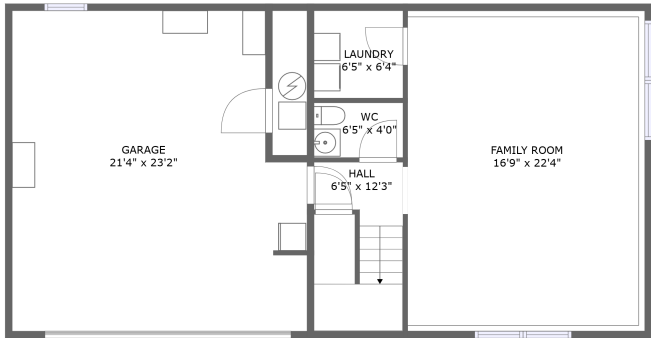


Home report

1340 Ironwood Court, Edgelawn Randall, Aurora, Kane County,
Illinois, United States, 60506



FLOOR 2



FLOOR 1


Total Area: 1744 sq. ft

Floor 1: 582 sq. ft, Floor 2: 1162 sq. ft

Excluded: Garage 462 sq. ft, Embedded window 6 sq. ft, Walls: 162 sq. ft

Property summary

 2 Floors

 3 Bedrooms

 2 Bathrooms

Home report

**1340 Ironwood Court, Edgelawn Randall, Aurora, Kane County,
Illinois, United States, 60506**



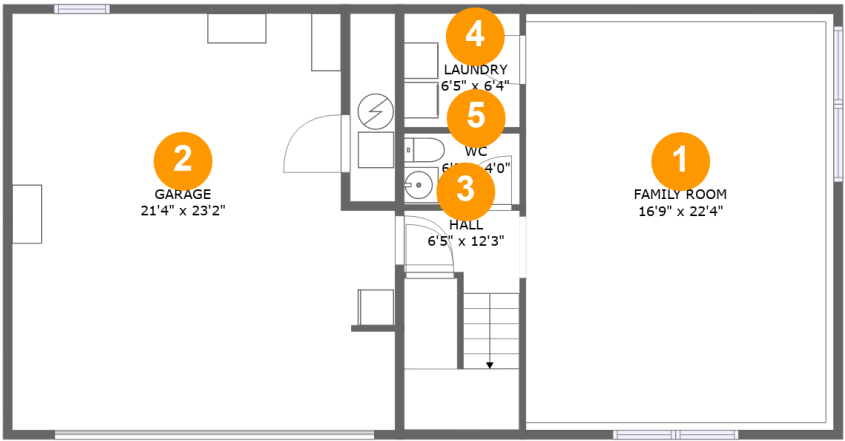
1
Half baths



1
Garages

Home report

1340 Ironwood Court, Edgelawn Randall, Aurora, Kane County,
Illinois, United States, 60506



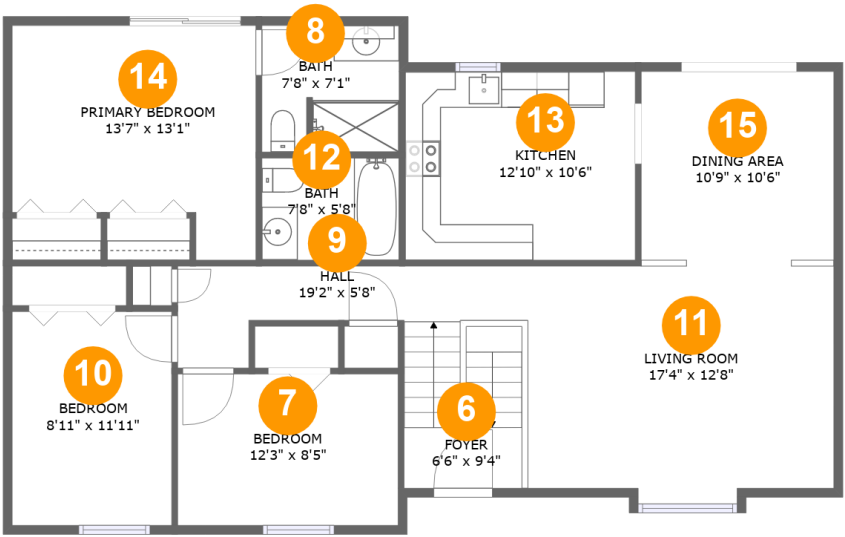
Room dimensions

Floor 1 Total:582sqft Excluded: 462sqft

#		Max Dimensions	sqft	Included
1	Family Room	16'9" x 22'4"	398 sq. ft	Yes
2	Garage	21'4" x 23'2"	461 sq. ft	No
3	Hall	6'5" x 12'3"	51 sq. ft	Yes
4	Laundry	6'5" x 6'4"	41 sq. ft	Yes
5	WC	6'5" x 4'0"	26 sq. ft	Yes

Home report

1340 Ironwood Court, Edgelawn Randall, Aurora, Kane County, Illinois, United States, 60506



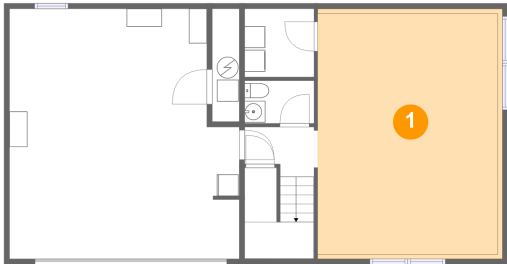
Room dimensions

Floor 2 Total:1162sqft Excluded: 6sqft

#		Max Dimensions	sqft	Included
6	Foyer	6'6" x 9'4"	61 sq. ft	Yes
7	Bedroom	12'3" x 8'5"	103 sq. ft	Yes
8	Bath	7'8" x 7'1"	53 sq. ft	Yes
9	Hall	19'2" x 5'8"	68 sq. ft	Yes
10	Bedroom	8'11" x 11'11"	106 sq. ft	Yes
11	Living Room	17'4" x 12'8"	218 sq. ft	Yes
12	Bath	7'8" x 5'8"	43 sq. ft	Yes
13	Kitchen	12'10" x 10'6"	135 sq. ft	Yes
14	Primary Bedroom	13'7" x 13'1"	150 sq. ft	Yes
15	Dining Area	10'9" x 10'6"	113 sq. ft	Yes

1340 Ironwood Court, Edgelawn Randall, Aurora, Kane County,
Illinois, United States, 60506

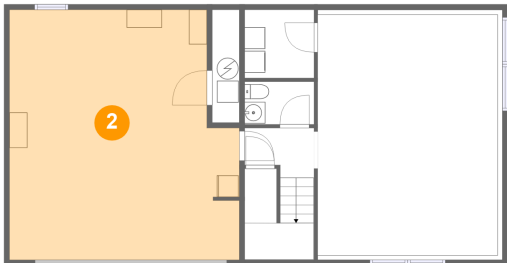
1 Floor 1 - Family Room



Max Dimensions: 16'9" x 22'4"
Calculated Area: 398 sq. ft
Included: Yes

Heated: Yes
Finished: Yes
Enclosed: Yes
Contiguous: Yes
Permitted: Yes
Wet space: No
Addition: No
Conversion: No

2 Floor 1 - Garage



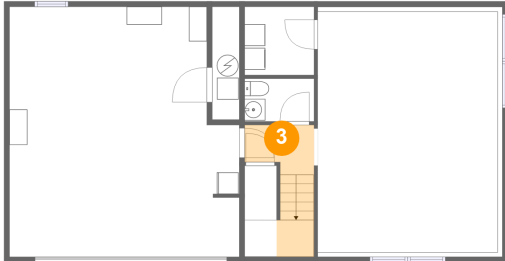
Max Dimensions: 21'4" x 23'2"
Calculated Area: 461 sq. ft
Included: No

Heated: No
Finished: No
Enclosed: Yes
Contiguous: Yes
Permitted: Yes
Wet space: No
Addition: No
Conversion: No

Home report

1340 Ironwood Court, Edgelawn Randall, Aurora, Kane County,
Illinois, United States, 60506

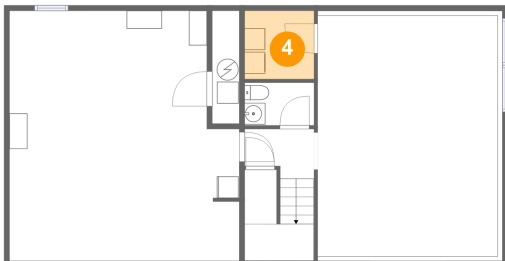
3 Floor 1 - Hall



Max Dimensions: 6'5" x 12'3"
Calculated Area: 51 sq. ft
Included: Yes

Heated: Yes
Finished: Yes
Enclosed: Yes
Contiguous: Yes
Permitted: Yes
Wet space: No
Addition: No
Conversion: No

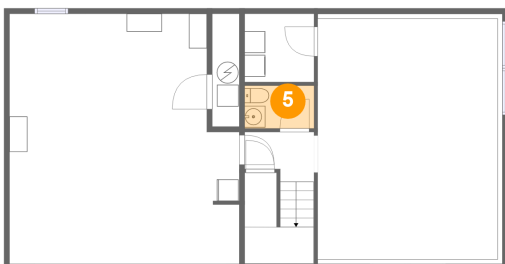
4 Floor 1 - Laundry



Max Dimensions: 6'5" x 6'4"
Calculated Area: 41 sq. ft
Included: Yes

Heated: Yes
Finished: Yes
Enclosed: Yes
Contiguous: Yes
Permitted: Yes
Wet space: No
Addition: No
Conversion: No

5 Floor 1 - WC



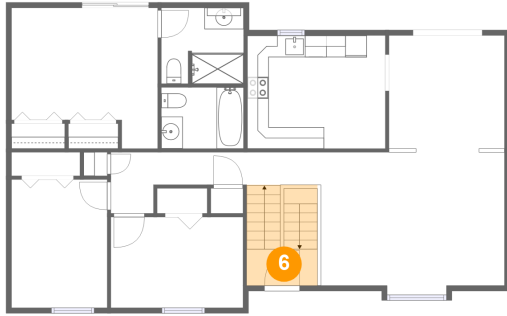
Max Dimensions: 6'5" x 4'0"
Calculated Area: 26 sq. ft
Included: Yes

Heated: Yes
Finished: Yes
Enclosed: Yes
Contiguous: Yes
Permitted: Yes
Wet space: Yes
Addition: No
Conversion: No

Home report

1340 Ironwood Court, Edgelawn Randall, Aurora, Kane County,
Illinois, United States, 60506

6 Floor 2 - Foyer



Max Dimensions: 6'6" x 9'4"
Calculated Area: 61 sq. ft
Included: Yes

Heated: Yes
Finished: Yes
Enclosed: Yes
Contiguous: Yes
Permitted: Yes
Wet space: No
Addition: No
Conversion: No

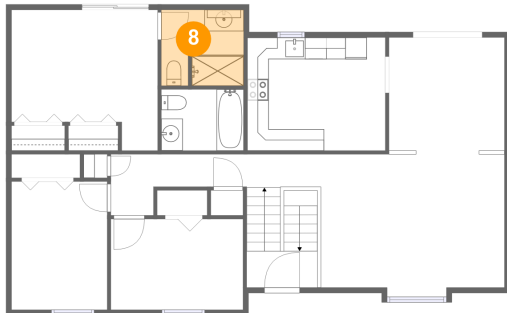
7 Floor 2 - Bedroom



Max Dimensions: 12'3" x 8'5"
Calculated Area: 103 sq. ft
Included: Yes

Heated: Yes
Finished: Yes
Enclosed: Yes
Contiguous: Yes
Permitted: Yes
Wet space: No
Addition: No
Conversion: No

8 Floor 2 - Bath

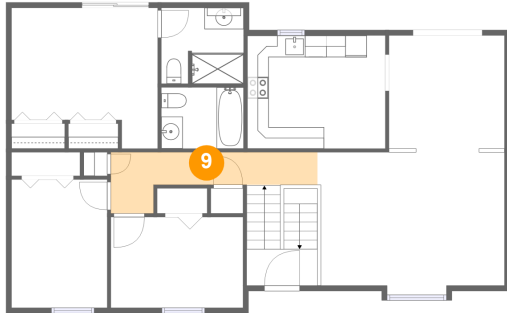


Max Dimensions: 7'8" x 7'1"
Calculated Area: 53 sq. ft
Included: Yes

Heated: Yes
Finished: Yes
Enclosed: Yes
Contiguous: Yes
Permitted: Yes
Wet space: Yes
Addition: No
Conversion: No

1340 Ironwood Court, Edgelawn Randall, Aurora, Kane County,
Illinois, United States, 60506

9 Floor 2 - Hall



Max Dimensions: 19'2" x 5'8"
Calculated Area: 68 sq. ft
Included: Yes

Heated: Yes
Finished: Yes
Enclosed: Yes
Contiguous: Yes
Permitted: Yes
Wet space: No
Addition: No
Conversion: No

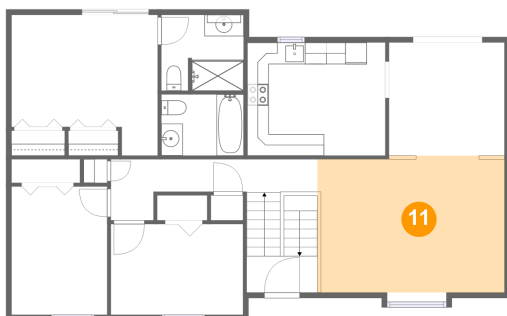
10 Floor 2 - Bedroom



Max Dimensions: 8'11" x 11'11"
Calculated Area: 106 sq. ft
Included: Yes

Heated: Yes
Finished: Yes
Enclosed: Yes
Contiguous: Yes
Permitted: Yes
Wet space: No
Addition: No
Conversion: No

11 Floor 2 - Living Room



Max Dimensions: 17'4" x 12'8"
Calculated Area: 218 sq. ft
Included: Yes

Heated: Yes
Finished: Yes
Enclosed: Yes
Contiguous: Yes
Permitted: Yes
Wet space: No
Addition: No
Conversion: No

1340 Ironwood Court, Edgelawn Randall, Aurora, Kane County,
Illinois, United States, 60506

12 Floor 2 - Bath



Max Dimensions: 7'8" x 5'8"
Calculated Area: 43 sq. ft
Included: Yes

Heated: Yes
Finished: Yes
Enclosed: Yes
Contiguous: Yes
Permitted: Yes
Wet space: Yes
Addition: No
Conversion: No

13 Floor 2 - Kitchen



Max Dimensions: 12'10" x 10'6"
Calculated Area: 135 sq. ft
Included: Yes

Heated: Yes
Finished: Yes
Enclosed: Yes
Contiguous: Yes
Permitted: Yes
Wet space: No
Addition: No
Conversion: No

14 Floor 2 - Primary Bedroom



Max Dimensions: 13'7" x 13'1"
Calculated Area: 150 sq. ft
Included: Yes

Heated: Yes
Finished: Yes
Enclosed: Yes
Contiguous: Yes
Permitted: Yes
Wet space: No
Addition: No
Conversion: No

1340 Ironwood Court, Edgelawn Randall, Aurora, Kane County,
Illinois, United States, 60506

15 Floor 2 - Dining Area



Max Dimensions: 10'9" x 10'6"
Calculated Area: 113 sq. ft
Included: Yes

Heated: Yes
Finished: Yes
Enclosed: Yes
Contiguous: Yes
Permitted: Yes
Wet space: No
Addition: No
Conversion: No