

## Home data report

**2400 Pileus Road, Spanish Springs, Sparks, Washoe County, Nevada, United States, 89441**



**Total Area: 2619 sq. ft**

1st Floor: 2619 sq. ft

Excluded: Garage 688 sq. ft, Walls: 151 sq. ft

## Property summary

 **1** Floors

 **5** Bedrooms

 **2** Bathrooms

Home data report

**2400 Pileus Road, Spanish Springs, Sparks, Washoe County,  
Nevada, United States, 89441**



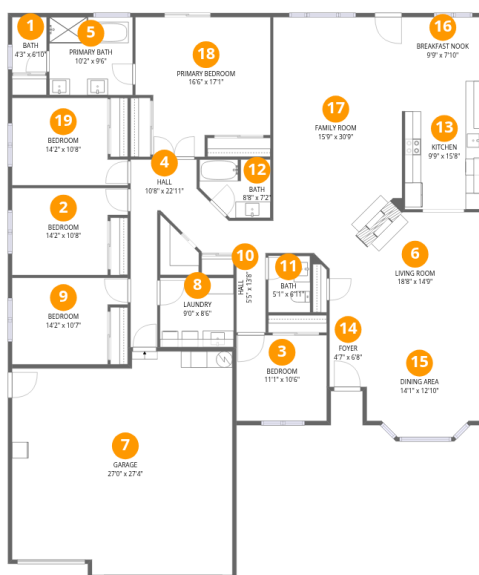
**1**  
Half baths



**1**  
Garages

## Home data report

2400 Pileus Road, Spanish Springs, Sparks, Washoe County, Nevada, United States, 89441



## Room dimensions

Floor 1

Total:2619sqft Excluded: 688sqft

#		Dimensions	sqft	Counted as living area
1	Bath	4'3" x 6'10"	29 sq. ft	Yes
2	Bedroom	14'2" x 10'8"	133 sq. ft	Yes
3	Bedroom	11'1" x 10'6"	116 sq. ft	Yes
4	Hall	10'8" x 22'11"	138 sq. ft	Yes
5	Primary Bath	10'2" x 9'6"	97 sq. ft	Yes
6	Living Room	18'8" x 14'9"	240 sq. ft	Yes
7	Garage	27'0" x 27'4"	688 sq. ft	No
8	Laundry	9'0" x 8'6"	77 sq. ft	Yes
9	Bedroom	14'2" x 10'7"	132 sq. ft	Yes
10	Hall	5'5" x 13'8"	56 sq. ft	Yes
11	Bath	5'1" x 6'11"	35 sq. ft	Yes

Home data report

**2400 Pileus Road, Spanish Springs, Sparks, Washoe County,  
Nevada, United States, 89441**

#		Dimensions	sqft	Counted as living area
12	Bath	8'8" x 7'2"	54 sq. ft	Yes
13	Kitchen	9'9" x 15'8"	149 sq. ft	Yes
14	Foyer	4'7" x 6'8"	30 sq. ft	Yes
15	Dining Area	14'1" x 12'10"	170 sq. ft	Yes
16	Breakfast Nook	9'9" x 7'10"	77 sq. ft	Yes
17	Family Room	15'9" x 30'9"	448 sq. ft	Yes
18	Primary Bedroom	16'6" x 17'1"	245 sq. ft	Yes
19	Bedroom	14'2" x 10'8"	133 sq. ft	Yes

2400 Pileus Road, Spanish Springs, Sparks, Washoe County,  
Nevada, United States, 89441

**1** Floor 1 - Bath

---



Dimensions: 4'3" x 6'10"  
Area: 29 sq. ft  
Counted as living area: Yes

Heated: Yes  
Finished: Yes  
Enclosed: Yes  
Contiguous: Yes  
Permitted: Yes  
Wet space: No  
Addition: No  
Conversion: No

**2** Floor 1 - Bedroom

---



Dimensions: 14'2" x 10'8"  
Area: 133 sq. ft  
Counted as living area: Yes

Heated: Yes  
Finished: Yes  
Enclosed: Yes  
Contiguous: Yes  
Permitted: Yes  
Wet space: No  
Addition: No  
Conversion: No

2400 Pileus Road, Spanish Springs, Sparks, Washoe County, Nevada, United States, 89441

**3** Floor 1 - Bedroom



Dimensions: 11'1" x 10'6"  
Area: 116 sq. ft  
Counted as living area: Yes

Heated: Yes  
Finished: Yes  
Enclosed: Yes  
Contiguous: Yes  
Permitted: Yes  
Wet space: No  
Addition: No  
Conversion: No

**4** Floor 1 - Hall



Dimensions: 10'8" x 22'11"  
Area: 138 sq. ft  
Counted as living area: Yes

Heated: Yes  
Finished: Yes  
Enclosed: Yes  
Contiguous: Yes  
Permitted: Yes  
Wet space: No  
Addition: No  
Conversion: No

**5** Floor 1 - Primary Bath

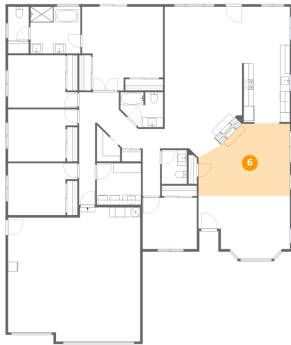


Dimensions: 10'2" x 9'6"  
Area: 97 sq. ft  
Counted as living area: Yes

Heated: Yes  
Finished: Yes  
Enclosed: Yes  
Contiguous: Yes  
Permitted: Yes  
Wet space: Yes  
Addition: No  
Conversion: No

2400 Pileus Road, Spanish Springs, Sparks, Washoe County, Nevada, United States, 89441

**6** Floor 1 - Living Room



Dimensions: 18'8" x 14'9"  
Area: 240 sq. ft  
Counted as living area: Yes

Heated: Yes  
Finished: Yes  
Enclosed: Yes  
Contiguous: Yes  
Permitted: Yes  
Wet space: No  
Addition: No  
Conversion: No

**7** Floor 1 - Garage



Dimensions: 27'0" x 27'4"  
Area: 688 sq. ft  
Counted as living area: No

Heated: No  
Finished: No  
Enclosed: Yes  
Contiguous: Yes  
Permitted: Yes  
Wet space: No  
Addition: No  
Conversion: No

**8** Floor 1 - Laundry



Dimensions: 9'0" x 8'6"  
Area: 77 sq. ft  
Counted as living area: Yes

Heated: Yes  
Finished: Yes  
Enclosed: Yes  
Contiguous: Yes  
Permitted: Yes  
Wet space: No  
Addition: No  
Conversion: No

2400 Pileus Road, Spanish Springs, Sparks, Washoe County, Nevada, United States, 89441

9 Floor 1 - Bedroom



Dimensions: 14'2" x 10'7"  
Area: 132 sq. ft  
Counted as living area: Yes

Heated: Yes  
Finished: Yes  
Enclosed: Yes  
Contiguous: Yes  
Permitted: Yes  
Wet space: No  
Addition: No  
Conversion: No

10 Floor 1 - Hall



Dimensions: 5'5" x 13'8"  
Area: 56 sq. ft  
Counted as living area: Yes

Heated: Yes  
Finished: Yes  
Enclosed: Yes  
Contiguous: Yes  
Permitted: Yes  
Wet space: No  
Addition: No  
Conversion: No

11 Floor 1 - Bath



Dimensions: 5'1" x 6'11"  
Area: 35 sq. ft  
Counted as living area: Yes

Heated: Yes  
Finished: Yes  
Enclosed: Yes  
Contiguous: Yes  
Permitted: Yes  
Wet space: Yes  
Addition: No  
Conversion: No

2400 Pileus Road, Spanish Springs, Sparks, Washoe County, Nevada, United States, 89441

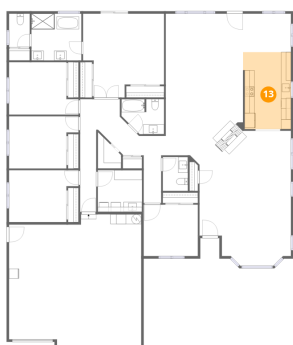
**12** Floor 1 - Bath



Dimensions: 8'8" x 7'2"  
Area: 54 sq. ft  
Counted as living area: Yes

Heated: Yes  
Finished: Yes  
Enclosed: Yes  
Contiguous: Yes  
Permitted: Yes  
Wet space: Yes  
Addition: No  
Conversion: No

**13** Floor 1 - Kitchen



Dimensions: 9'9" x 15'8"  
Area: 149 sq. ft  
Counted as living area: Yes

Heated: Yes  
Finished: Yes  
Enclosed: Yes  
Contiguous: Yes  
Permitted: Yes  
Wet space: No  
Addition: No  
Conversion: No

**14** Floor 1 - Foyer



Dimensions: 4'7" x 6'8"  
Area: 30 sq. ft  
Counted as living area: Yes

Heated: Yes  
Finished: Yes  
Enclosed: Yes  
Contiguous: Yes  
Permitted: Yes  
Wet space: No  
Addition: No  
Conversion: No

2400 Pileus Road, Spanish Springs, Sparks, Washoe County, Nevada, United States, 89441

**15** Floor 1 - Dining Area



Dimensions: 14'1" x 12'10"  
Area: 170 sq. ft  
Counted as living area: Yes

Heated: Yes  
Finished: Yes  
Enclosed: Yes  
Contiguous: Yes  
Permitted: Yes  
Wet space: No  
Addition: No  
Conversion: No

**16** Floor 1 - Breakfast Nook



Dimensions: 9'9" x 7'10"  
Area: 77 sq. ft  
Counted as living area: Yes

Heated: Yes  
Finished: Yes  
Enclosed: Yes  
Contiguous: Yes  
Permitted: Yes  
Wet space: No  
Addition: No  
Conversion: No

**17** Floor 1 - Family Room



Dimensions: 15'9" x 30'9"  
Area: 448 sq. ft  
Counted as living area: Yes

Heated: Yes  
Finished: Yes  
Enclosed: Yes  
Contiguous: Yes  
Permitted: Yes  
Wet space: No  
Addition: No  
Conversion: No

2400 Pileus Road, Spanish Springs, Sparks, Washoe County,  
Nevada, United States, 89441

**18** Floor 1 - Primary Bedroom

---



Dimensions: 16'6" x 17'1"  
Area: 245 sq. ft  
Counted as living area: Yes

Heated: Yes  
Finished: Yes  
Enclosed: Yes  
Contiguous: Yes  
Permitted: Yes  
Wet space: No  
Addition: No  
Conversion: No

**19** Floor 1 - Bedroom

---



Dimensions: 14'2" x 10'8"  
Area: 133 sq. ft  
Counted as living area: Yes

Heated: Yes  
Finished: Yes  
Enclosed: Yes  
Contiguous: Yes  
Permitted: Yes  
Wet space: No  
Addition: No  
Conversion: No