


1552 Glen Hollow Lane North, Lake Highlander, Dunedin, Pinellas County, Florida, United States,



Property summary

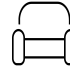
 **1** Garages

 **4** Bedrooms

 **3** Bathrooms

 **0** Half baths

 **1** Floors

 **2,213** Gross living area sqft

 **4,032** Total sqft

1552 Glen Hollow Lane North, Lake Highlander, Dunedin, Pinellas County, Florida, United States,



Room dimensions

Floor 1

Total sqft: 4032 Living area: 2213

#		Dimensions	sqft	Counted as living area
1	Bedroom	13'9" x 10'10"	149 sq. ft	Yes
2	Family Room	13'2" x 21'1"	230 sq. ft	Yes
3	Bath	8'8" x 10'1"	62 sq. ft	Yes
4	Primary Bedroom	12'0" x 16'2"	193 sq. ft	Yes
5	Hall	8'4" x 5'1"	30 sq. ft	Yes
6	Cl	13'9" x 2'3"	31 sq. ft	Yes
7	Porch	47'3" x 15'2"	654 sq. ft	No
8	Screened Porch	47'3" x 22'5"	1060 sq. ft	No
9	Living Room	16'1" x 16'7"	234 sq. ft	Yes
10	Foyer	8'4" x 7'2"	59 sq. ft	Yes
11	Dining Room	11'7" x 16'2"	156 sq. ft	Yes

Scan captured on Wed, 12 Mar 2025 16:47:39 GMT

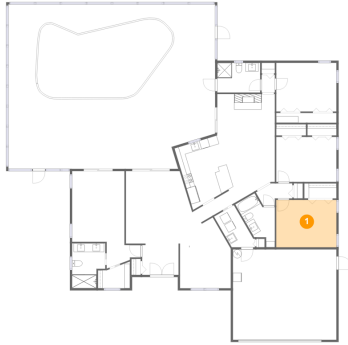
Information is calculated by Cubicasa technology deemed highly reliable but not guaranteed.

**1552 Glen Hollow Lane North, Lake Highlander,
Dunedin, Pinellas County, Florida, United States,**

#		Dimensions	sqft	Counted as living area
12	W.I.C.	7'4" x 6'0"	35 sq. ft	Yes
13	Bedroom	13'10" x 10'3"	141 sq. ft	Yes
14	Garage	23'8" x 20'8"	488 sq. ft	No
15	Swimming Pool	30'6" x 14'11"	453 sq. ft	No
16	Hall	21'2" x 3'5"	70 sq. ft	Yes
17	Cl	7'4" x 3'5"	25 sq. ft	Yes
18	Bedroom	13'10" x 11'1"	153 sq. ft	Yes
19	Hall	7'9" x 5'11"	33 sq. ft	Yes
20	Bath	9'10" x 6'9"	67 sq. ft	Yes
21	Kitchen	10'4" x 15'0"	139 sq. ft	Yes
22	Bath	7'7" x 10'3"	69 sq. ft	Yes
23	Laundry	6'5" x 9'7"	50 sq. ft	Yes

1552 Glen Hollow Lane North, Lake Highlander, Dunedin, Pinellas County, Florida, United States,

1 Floor 1 - Bedroom



Dimensions: 13'9" x 10'10"
Area: 149 sq. ft
Counted as living area: Yes

Heated: Yes
Finished: Yes
Enclosed: Yes
Contiguous: Yes
Permitted: Yes
Wet space: No
Addition: No
Conversion: No

2 Floor 1 - Family Room



Dimensions: 13'2" x 21'1"
Area: 230 sq. ft
Counted as living area: Yes

Heated: Yes
Finished: Yes
Enclosed: Yes
Contiguous: Yes
Permitted: Yes
Wet space: No
Addition: No
Conversion: No

1552 Glen Hollow Lane North, Lake Highlander, Dunedin, Pinellas County, Florida, United States,

3 Floor 1 - Bath



Dimensions: 8'8" x 10'1"
Area: 62 sq. ft
Counted as living area: Yes

Heated: Yes
Finished: Yes
Enclosed: Yes
Contiguous: Yes
Permitted: Yes
Wet space: Yes
Addition: No
Conversion: No

4 Floor 1 - Primary Bedroom



Dimensions: 12'0" x 16'2"
Area: 193 sq. ft
Counted as living area: Yes

Heated: Yes
Finished: Yes
Enclosed: Yes
Contiguous: Yes
Permitted: Yes
Wet space: No
Addition: No
Conversion: No

5 Floor 1 - Hall



Dimensions: 8'4" x 5'1"
Area: 30 sq. ft
Counted as living area: Yes

Heated: Yes
Finished: Yes
Enclosed: Yes
Contiguous: Yes
Permitted: Yes
Wet space: No
Addition: No
Conversion: No

1552 Glen Hollow Lane North, Lake Highlander, Dunedin, Pinellas County, Florida, United States,

6 Floor 1 - Cl



Dimensions: 13'9" x 2'3"
Area: 31 sq. ft
Counted as living area: Yes

Heated: Yes
Finished: Yes
Enclosed: Yes
Contiguous: Yes
Permitted: Yes
Wet space: No
Addition: No
Conversion: No

7 Floor 1 - Porch



Dimensions: 47'3" x 15'2"
Area: 654 sq. ft
Counted as living area: No

Heated: No
Finished: Yes
Enclosed: No
Contiguous: Yes
Permitted: Yes
Wet space: No
Addition: No
Conversion: No

8 Floor 1 - Screened Porch

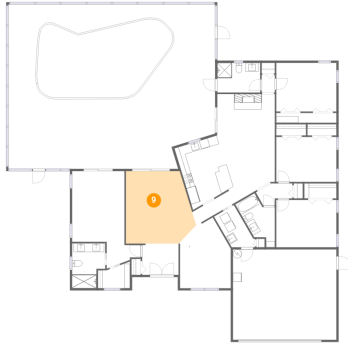


Dimensions: 47'3" x 22'5"
Area: 1060 sq. ft
Counted as living area: No

Heated: No
Finished: Yes
Enclosed: No
Contiguous: Yes
Permitted: Yes
Wet space: No
Addition: No
Conversion: No

1552 Glen Hollow Lane North, Lake Highlander, Dunedin, Pinellas County, Florida, United States,

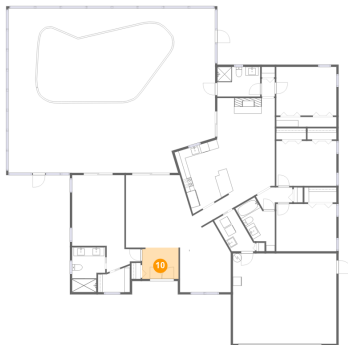
9 Floor 1 - Living Room



Dimensions: 16'1" x 16'7"
Area: 234 sq. ft
Counted as living area: Yes

Heated: Yes
Finished: Yes
Enclosed: Yes
Contiguous: Yes
Permitted: Yes
Wet space: No
Addition: No
Conversion: No

10 Floor 1 - Foyer



Dimensions: 8'4" x 7'2"
Area: 59 sq. ft
Counted as living area: Yes

Heated: Yes
Finished: Yes
Enclosed: Yes
Contiguous: Yes
Permitted: Yes
Wet space: No
Addition: No
Conversion: No

11 Floor 1 - Dining Room



Dimensions: 11'7" x 16'2"
Area: 156 sq. ft
Counted as living area: Yes

Heated: Yes
Finished: Yes
Enclosed: Yes
Contiguous: Yes
Permitted: Yes
Wet space: No
Addition: No
Conversion: No

1552 Glen Hollow Lane North, Lake Highlander, Dunedin, Pinellas County, Florida, United States,

12 Floor 1 - W.I.C.



Dimensions: 7'4" x 6'0"
Area: 35 sq. ft
Counted as living area: Yes

Heated: Yes
Finished: Yes
Enclosed: Yes
Contiguous: Yes
Permitted: Yes
Wet space: No
Addition: No
Conversion: No

13 Floor 1 - Bedroom



Dimensions: 13'10" x 10'3"
Area: 141 sq. ft
Counted as living area: Yes

Heated: Yes
Finished: Yes
Enclosed: Yes
Contiguous: Yes
Permitted: Yes
Wet space: No
Addition: No
Conversion: No

14 Floor 1 - Garage

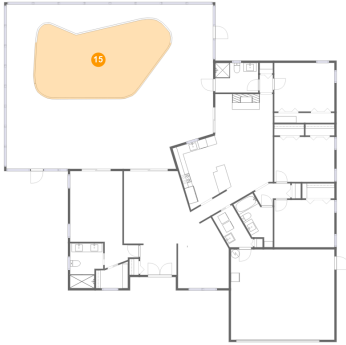


Dimensions: 23'8" x 20'8"
Area: 488 sq. ft
Counted as living area: No

Heated: No
Finished: No
Enclosed: Yes
Contiguous: Yes
Permitted: Yes
Wet space: No
Addition: No
Conversion: No

1552 Glen Hollow Lane North, Lake Highlander, Dunedin, Pinellas County, Florida, United States,

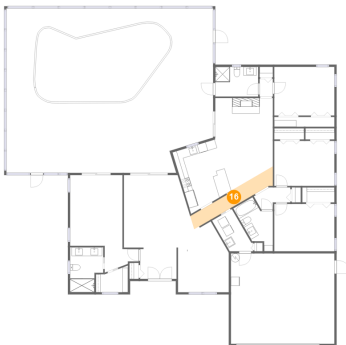
15 Floor 1 - Swimming Pool



Dimensions: 30'6" x 14'11"
Area: 453 sq. ft
Counted as living area: No

Heated: No
Finished: No
Enclosed: No
Contiguous: Yes
Permitted: No
Wet space: No
Addition: No
Conversion: No

16 Floor 1 - Hall



Dimensions: 21'2" x 3'5"
Area: 70 sq. ft
Counted as living area: Yes

Heated: Yes
Finished: Yes
Enclosed: Yes
Contiguous: Yes
Permitted: Yes
Wet space: No
Addition: No
Conversion: No

17 Floor 1 - Cl



Dimensions: 7'4" x 3'5"
Area: 25 sq. ft
Counted as living area: Yes

Heated: Yes
Finished: Yes
Enclosed: Yes
Contiguous: Yes
Permitted: Yes
Wet space: No
Addition: No
Conversion: No

1552 Glen Hollow Lane North, Lake Highlander, Dunedin, Pinellas County, Florida, United States,

18 Floor 1 - Bedroom



Dimensions: 13'10" x 11'1"
Area: 153 sq. ft
Counted as living area: Yes

Heated: Yes
Finished: Yes
Enclosed: Yes
Contiguous: Yes
Permitted: Yes
Wet space: No
Addition: No
Conversion: No

19 Floor 1 - Hall



Dimensions: 7'9" x 5'11"
Area: 33 sq. ft
Counted as living area: Yes

Heated: Yes
Finished: Yes
Enclosed: Yes
Contiguous: Yes
Permitted: Yes
Wet space: No
Addition: No
Conversion: No

20 Floor 1 - Bath



Dimensions: 9'10" x 6'9"
Area: 67 sq. ft
Counted as living area: Yes

Heated: Yes
Finished: Yes
Enclosed: Yes
Contiguous: Yes
Permitted: Yes
Wet space: Yes
Addition: No
Conversion: No

1552 Glen Hollow Lane North, Lake Highlander, Dunedin, Pinellas County, Florida, United States,

21 Floor 1 - Kitchen



Dimensions: 10'4" x 15'0"
Area: 139 sq. ft
Counted as living area: Yes

Heated: Yes
Finished: Yes
Enclosed: Yes
Contiguous: Yes
Permitted: Yes
Wet space: No
Addition: No
Conversion: No

22 Floor 1 - Bath



Dimensions: 7'7" x 10'3"
Area: 69 sq. ft
Counted as living area: Yes

Heated: Yes
Finished: Yes
Enclosed: Yes
Contiguous: Yes
Permitted: Yes
Wet space: Yes
Addition: No
Conversion: No

23 Floor 1 - Laundry



Dimensions: 6'5" x 9'7"
Area: 50 sq. ft
Counted as living area: Yes

Heated: Yes
Finished: Yes
Enclosed: Yes
Contiguous: Yes
Permitted: Yes
Wet space: No
Addition: No
Conversion: No