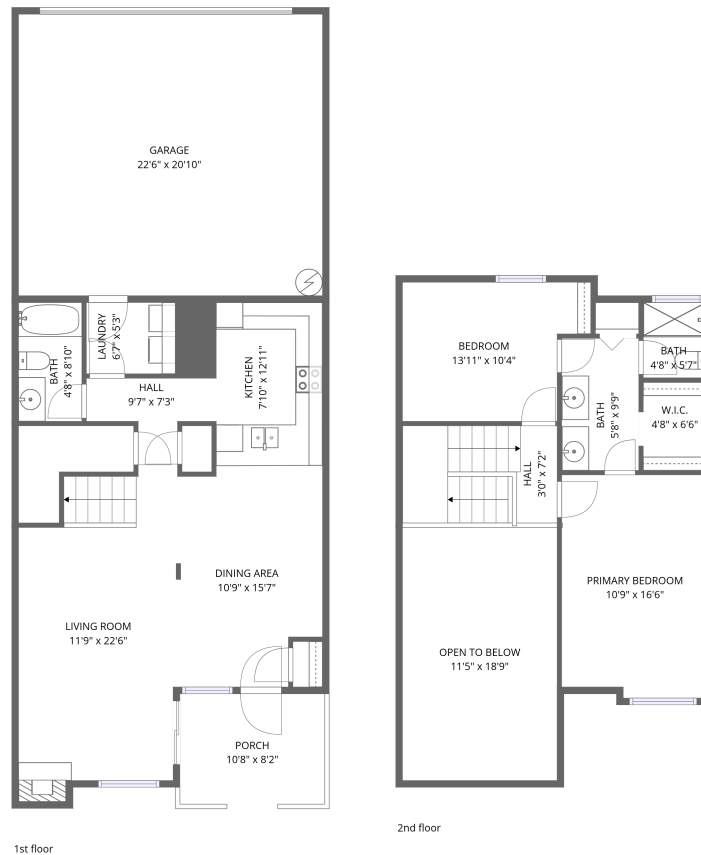


# Home data report

## 1021 Tyler Way, Sparks, Nevada 89431, United States




**Total Area: 1253 sq. ft**

1st Floor: 721 sq. ft, 2nd Floor: 532 sq. ft

Excluded: Garage 469 sq. ft, Porch 88 sq. ft, Fireplace 8 sq. ft, Open to below 214 sq. ft, Walls: 113 sq. ft

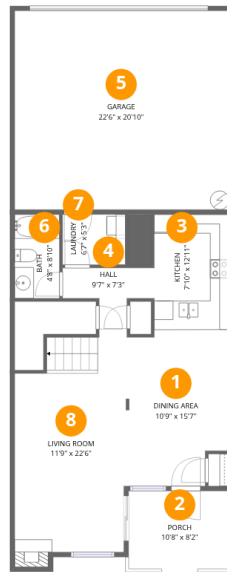
### Property summary

 **2** Floors

 **2** Bedrooms

 **2** Bathrooms

 **1** Garages



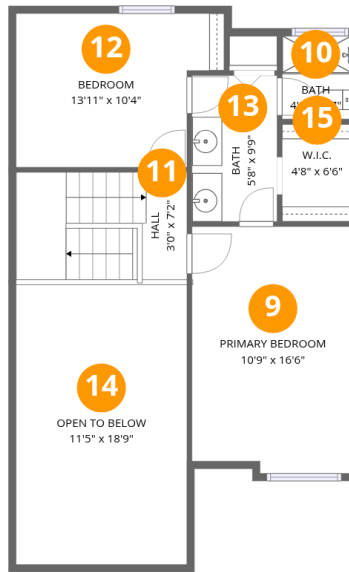
## Room dimensions

Floor 1

Total:721sqft

Excluded: 565sqft

#		Dimensions	sqft	Counted as living area
1	Dining Area	10'9" x 15'7"	167 sq. ft	Yes
2	Porch	10'8" x 8'2"	87 sq. ft	No
3	Kitchen	7'10" x 12'11"	101 sq. ft	Yes
4	Hall	9'7" x 7'3"	70 sq. ft	Yes
5	Garage	22'6" x 20'10"	467 sq. ft	No
6	Bath	4'8" x 8'10"	41 sq. ft	Yes
7	Laundry	6'7" x 5'3"	35 sq. ft	Yes
8	Living Room	11'9" x 22'6"	265 sq. ft	Yes



## Room dimensions

Floor 2

Total:532sqft

Excluded: 214sqft

#		Dimensions	sqft	Counted as living area
9	Primary Bedroom	10'9" x 16'6"	177 sq. ft	Yes
10	Bath	4'8" x 5'7"	26 sq. ft	Yes
11	Hall	3'0" x 7'2"	22 sq. ft	Yes
12	Bedroom	13'11" x 10'4"	144 sq. ft	Yes
13	Bath	5'8" x 9'9"	56 sq. ft	Yes
14	Open To Below	11'5" x 18'9"	214 sq. ft	No
15	W.I.C.	4'8" x 6'6"	31 sq. ft	Yes

## 1 Floor 1 - Dining Area

---



Dimensions: 10'9" x 15'7"  
Area: 167 sq. ft  
Counted as living area: Yes

Heated: Yes  
Finished: Yes  
Enclosed: Yes  
Contiguous: Yes  
Permitted: Yes  
Wet space: No  
Addition: No  
Conversion: No

## 2 Floor 1 - Porch

---



Dimensions: 10'8" x 8'2"  
Area: 87 sq. ft  
Counted as living area: No

Heated: No  
Finished: No  
Enclosed: No  
Contiguous: Yes  
Permitted: Yes  
Wet space: No  
Addition: No  
Conversion: No

### 3 Floor 1 - Kitchen



Dimensions: 7'10" x 12'11"  
Area: 101 sq. ft  
Counted as living area: Yes

Heated: Yes  
Finished: Yes  
Enclosed: Yes  
Contiguous: Yes  
Permitted: Yes  
Wet space: No  
Addition: No  
Conversion: No

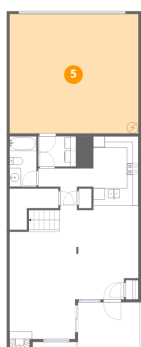
### 4 Floor 1 - Hall



Dimensions: 9'7" x 7'3"  
Area: 70 sq. ft  
Counted as living area: Yes

Heated: Yes  
Finished: Yes  
Enclosed: Yes  
Contiguous: Yes  
Permitted: Yes  
Wet space: No  
Addition: No  
Conversion: No

### 5 Floor 1 - Garage



Dimensions: 22'6" x 20'10"  
Area: 467 sq. ft  
Counted as living area: No

Heated: No  
Finished: No  
Enclosed: Yes  
Contiguous: Yes  
Permitted: Yes  
Wet space: No  
Addition: No  
Conversion: No

## 6 Floor 1 - Bath



Dimensions: 4'8" x 8'10"  
Area: 41 sq. ft  
Counted as living area: Yes

Heated: Yes  
Finished: Yes  
Enclosed: Yes  
Contiguous: Yes  
Permitted: Yes  
Wet space: Yes  
Addition: No  
Conversion: No

## 7 Floor 1 - Laundry



Dimensions: 6'7" x 5'3"  
Area: 35 sq. ft  
Counted as living area: Yes

Heated: Yes  
Finished: Yes  
Enclosed: Yes  
Contiguous: Yes  
Permitted: Yes  
Wet space: No  
Addition: No  
Conversion: No

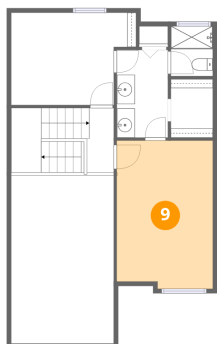
## 8 Floor 1 - Living Room



Dimensions: 11'9" x 22'6"  
Area: 265 sq. ft  
Counted as living area: Yes

Heated: Yes  
Finished: Yes  
Enclosed: Yes  
Contiguous: Yes  
Permitted: Yes  
Wet space: No  
Addition: No  
Conversion: No

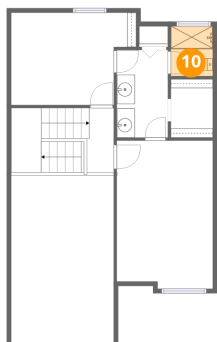
## 9 Floor 2 - Primary Bedroom



Dimensions: 10'9" x 16'6"  
Area: 177 sq. ft  
Counted as living area: Yes

Heated: Yes  
Finished: Yes  
Enclosed: Yes  
Contiguous: Yes  
Permitted: Yes  
Wet space: No  
Addition: No  
Conversion: No

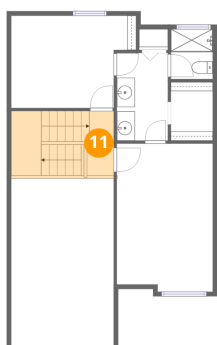
## 10 Floor 2 - Bath



Dimensions: 4'8" x 5'7"  
Area: 26 sq. ft  
Counted as living area: Yes

Heated: Yes  
Finished: Yes  
Enclosed: Yes  
Contiguous: Yes  
Permitted: Yes  
Wet space: Yes  
Addition: No  
Conversion: No

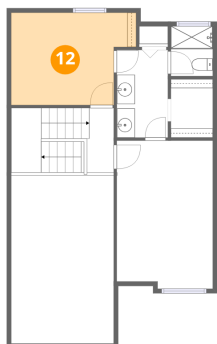
## 11 Floor 2 - Hall



Dimensions: 3'0" x 7'2"  
Area: 22 sq. ft  
Counted as living area: Yes

Heated: Yes  
Finished: Yes  
Enclosed: Yes  
Contiguous: Yes  
Permitted: Yes  
Wet space: No  
Addition: No  
Conversion: No

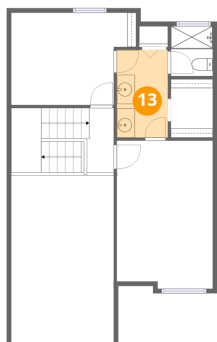
## 12 Floor 2 - Bedroom



Dimensions: 13'11" x 10'4"  
Area: 144 sq. ft  
Counted as living area: Yes

Heated: Yes  
Finished: Yes  
Enclosed: Yes  
Contiguous: Yes  
Permitted: Yes  
Wet space: No  
Addition: No  
Conversion: No

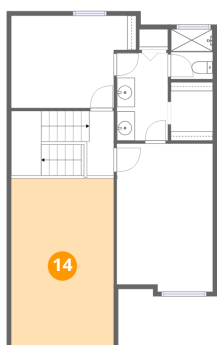
## 13 Floor 2 - Bath



Dimensions: 5'8" x 9'9"  
Area: 56 sq. ft  
Counted as living area: Yes

Heated: Yes  
Finished: Yes  
Enclosed: Yes  
Contiguous: Yes  
Permitted: Yes  
Wet space: Yes  
Addition: No  
Conversion: No

## 14 Floor 2 - Open To Below

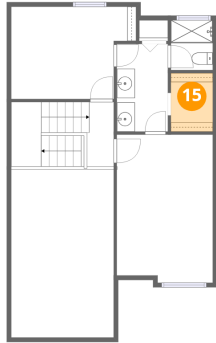


Dimensions: 11'5" x 18'9"  
Area: 214 sq. ft  
Counted as living area: No

Heated: No  
Finished: No  
Enclosed: No  
Contiguous: Yes  
Permitted: No  
Wet space: No  
Addition: No  
Conversion: No

**15** Floor 2 - W.I.C.

---



Dimensions: 4'8" x 6'6"  
Area: 31 sq. ft  
Counted as living area: Yes

Heated: Yes  
Finished: Yes  
Enclosed: Yes  
Contiguous: Yes  
Permitted: Yes  
Wet space: No  
Addition: No  
Conversion: No