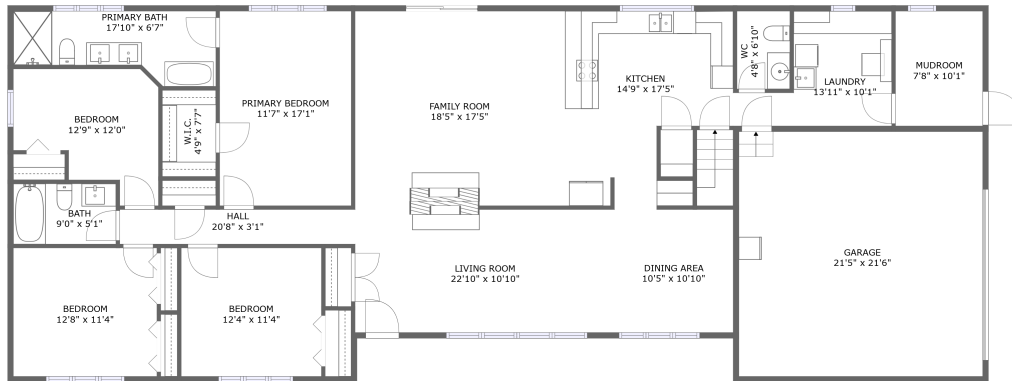
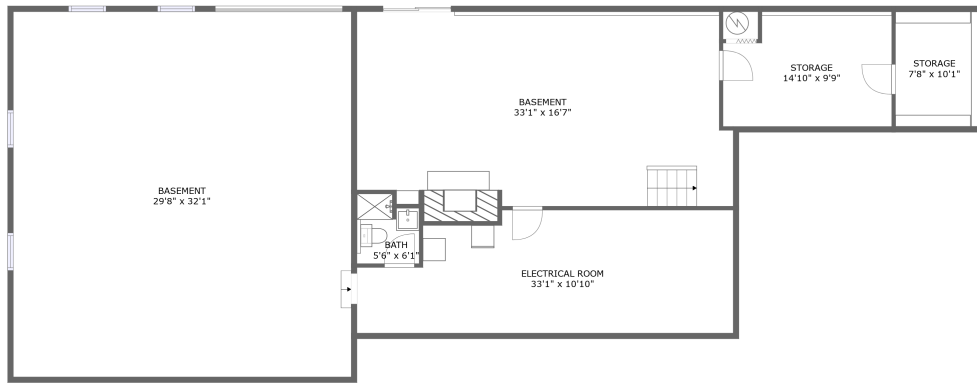


1081 Woodcliff Drive, Coleman, South Elgin, Kane County, Illinois, United States, 60177




FLOOR 2



FLOOR 1

Property summary


 **1** Garages

 **4** Bedrooms

 **3** Bathrooms

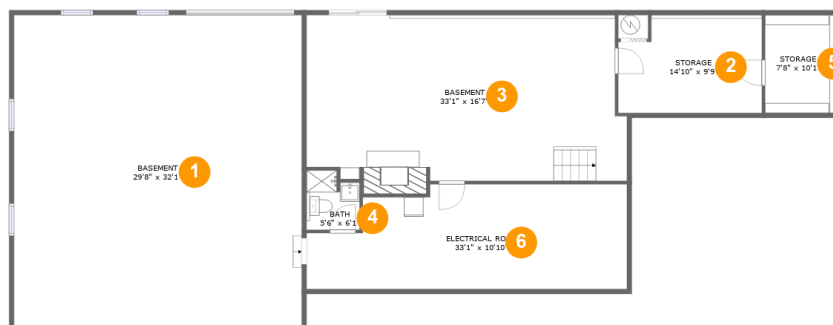
 **1** Half baths

 **2** Floors

 **3,173** Gross living area sqft

 **4,978** Total sqft

1081 Woodcliff Drive, Coleman, South Elgin, Kane County, Illinois, United States, 60177



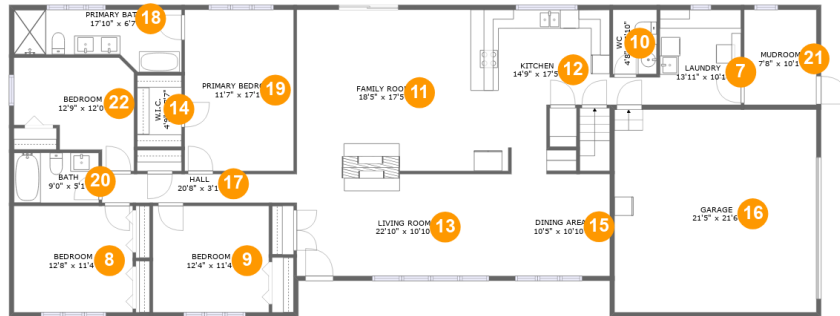
Room dimensions

Floor 1

Total sqft: 2246 Living area: 1018

#		Dimensions	sqft	Counted as living area
1	Basement	29'8" x 32'1"	955 sq. ft	Yes
2	Storage	14'10" x 9'9"	140 sq. ft	No
3	Basement	33'1" x 16'7"	556 sq. ft	No
4	Bath	5'6" x 6'1"	30 sq. ft	No
5	Storage	7'8" x 10'1"	78 sq. ft	No
6	Room	33'1" x 10'10"	320 sq. ft	No

1081 Woodcliff Drive, Coleman, South Elgin, Kane County, Illinois, United States, 60177



Room dimensions

Floor 2

Total sqft: 2732 Living area: 2155

#		Dimensions	sqft	Counted as living area
7	Utility	13'11" x 10'1"	103 sq. ft	Yes
8	Bedroom	12'8" x 11'4"	143 sq. ft	Yes
9	Bedroom	12'4" x 11'4"	139 sq. ft	Yes
10	Bath	4'8" x 6'10"	32 sq. ft	Yes
11	Living Room	18'5" x 17'5"	320 sq. ft	Yes
12	Kitchen	14'9" x 17'5"	213 sq. ft	Yes
13	Living Room	22'10" x 10'10"	247 sq. ft	Yes
14	Cl	4'9" x 7'7"	36 sq. ft	Yes
15	Dining Room	10'5" x 10'10"	113 sq. ft	Yes
16	Garage	21'5" x 21'6"	462 sq. ft	No
17	Hall	20'8" x 3'1"	63 sq. ft	Yes

Scan captured on Mon, 23 Dec 2024 16:17:36 GMT

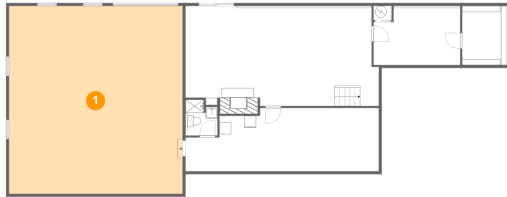
Information is calculated by Cubicasa technology deemed highly reliable but not guaranteed.

**1081 Woodcliff Drive, Coleman, South Elgin, Kane
County, Illinois, United States, 60177**

#		Dimensions	sqft	Counted as living area
18	Bath	17'10" x 6'7"	95 sq. ft	Yes
19	Bedroom	11'7" x 17'1"	198 sq. ft	Yes
20	Bath	9'0" x 5'1"	48 sq. ft	Yes
21	Mudroom	7'8" x 10'1"	78 sq. ft	No
22	Bedroom	12'9" x 12'0"	118 sq. ft	Yes

1081 Woodcliff Drive, Coleman, South Elgin, Kane County, Illinois, United States, 60177

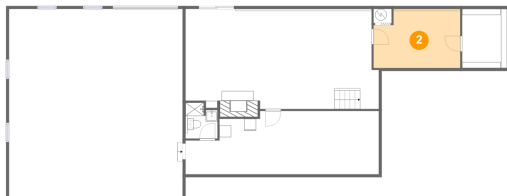
1 Floor 1 - Basement



Dimensions: 29'8" x 32'1"
Area: 955 sq. ft
Counted as living area: Yes

Heated: Yes
Finished: Yes
Enclosed: Yes
Contiguous: Yes
Permitted: Yes
Wet space: No
Addition: No
Conversion: No

2 Floor 1 - Storage

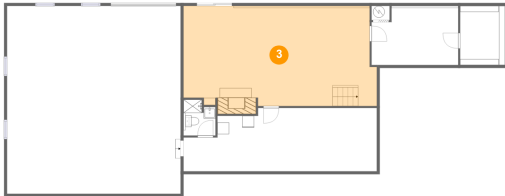


Dimensions: 14'10" x 9'9"
Area: 140 sq. ft
Counted as living area: No

Heated: No
Finished: No
Enclosed: No
Contiguous: Yes
Permitted: Yes
Wet space: No
Addition: No
Conversion: No

1081 Woodcliff Drive, Coleman, South Elgin, Kane County, Illinois, United States, 60177

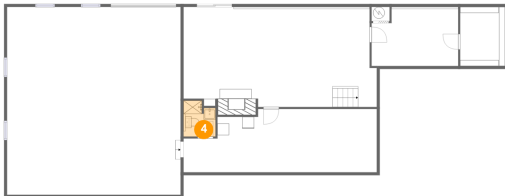
3 Floor 1 - Basement



Dimensions: 33'1" x 16'7"
Area: 556 sq. ft
Counted as living area: No

Heated: Yes
Finished: No
Enclosed: Yes
Contiguous: Yes
Permitted: Yes
Wet space: No
Addition: No
Conversion: No

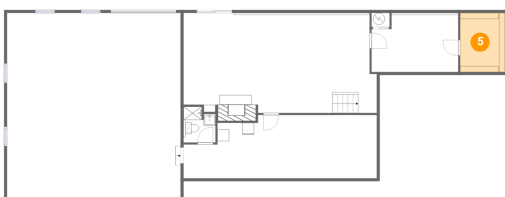
4 Floor 1 - Bath



Dimensions: 5'6" x 6'1"
Area: 30 sq. ft
Counted as living area: No

Heated: Yes
Finished: No
Enclosed: Yes
Contiguous: Yes
Permitted: Yes
Wet space: Yes
Addition: No
Conversion: No

5 Floor 1 - Storage

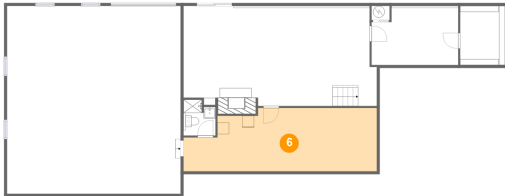


Dimensions: 7'8" x 10'1"
Area: 78 sq. ft
Counted as living area: No

Heated: No
Finished: No
Enclosed: No
Contiguous: Yes
Permitted: Yes
Wet space: No
Addition: No
Conversion: No

1081 Woodcliff Drive, Coleman, South Elgin, Kane County, Illinois, United States, 60177

6 Floor 1 - Room



Dimensions: 33'1" x 10'10"
Area: 320 sq. ft
Counted as living area: No

Heated: No
Finished: No
Enclosed: Yes
Contiguous: Yes
Permitted: Yes
Wet space: No
Addition: No
Conversion: No

7 Floor 2 - Utility



Dimensions: 13'11" x 10'1"
Area: 103 sq. ft
Counted as living area: Yes

Heated: Yes
Finished: Yes
Enclosed: Yes
Contiguous: Yes
Permitted: Yes
Wet space: No
Addition: No
Conversion: No

8 Floor 2 - Bedroom



Dimensions: 12'8" x 11'4"
Area: 143 sq. ft
Counted as living area: Yes

Heated: Yes
Finished: Yes
Enclosed: Yes
Contiguous: Yes
Permitted: Yes
Wet space: No
Addition: No
Conversion: No

1081 Woodcliff Drive, Coleman, South Elgin, Kane County, Illinois, United States, 60177

9 Floor 2 - Bedroom



Dimensions: 12'4" x 11'4"
Area: 139 sq. ft
Counted as living area: Yes

Heated: Yes
Finished: Yes
Enclosed: Yes
Contiguous: Yes
Permitted: Yes
Wet space: No
Addition: No
Conversion: No

10 Floor 2 - Bath



Dimensions: 4'8" x 6'10"
Area: 32 sq. ft
Counted as living area: Yes

Heated: Yes
Finished: Yes
Enclosed: Yes
Contiguous: Yes
Permitted: Yes
Wet space: Yes
Addition: No
Conversion: No

11 Floor 2 - Living Room



Dimensions: 18'5" x 17'5"
Area: 320 sq. ft
Counted as living area: Yes

Heated: Yes
Finished: Yes
Enclosed: Yes
Contiguous: Yes
Permitted: Yes
Wet space: No
Addition: No
Conversion: No

**1081 Woodcliff Drive, Coleman, South Elgin, Kane
County, Illinois, United States, 60177**

12 Floor 2 - Kitchen



Dimensions: 14'9" x 17'5"
Area: 213 sq. ft
Counted as living area: Yes

Heated: Yes
Finished: Yes
Enclosed: Yes
Contiguous: Yes
Permitted: Yes
Wet space: No
Addition: No
Conversion: No

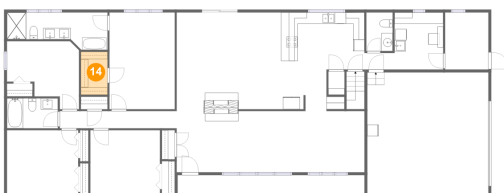
13 Floor 2 - Living Room



Dimensions: 22'10" x 10'10"
Area: 247 sq. ft
Counted as living area: Yes

Heated: Yes
Finished: Yes
Enclosed: Yes
Contiguous: Yes
Permitted: Yes
Wet space: No
Addition: No
Conversion: No

14 Floor 2 - Cl



Dimensions: 4'9" x 7'7"
Area: 36 sq. ft
Counted as living area: Yes

Heated: Yes
Finished: Yes
Enclosed: Yes
Contiguous: Yes
Permitted: Yes
Wet space: No
Addition: No
Conversion: No

1081 Woodcliff Drive, Coleman, South Elgin, Kane County, Illinois, United States, 60177

15 Floor 2 - Dining Room



Dimensions: 10'5" x 10'10"
Area: 113 sq. ft
Counted as living area: Yes

Heated: Yes
Finished: Yes
Enclosed: Yes
Contiguous: Yes
Permitted: Yes
Wet space: No
Addition: No
Conversion: No

16 Floor 2 - Garage



Dimensions: 21'5" x 21'6"
Area: 462 sq. ft
Counted as living area: No

Heated: No
Finished: No
Enclosed: Yes
Contiguous: Yes
Permitted: Yes
Wet space: No
Addition: No
Conversion: No

17 Floor 2 - Hall



Dimensions: 20'8" x 3'1"
Area: 63 sq. ft
Counted as living area: Yes

Heated: Yes
Finished: Yes
Enclosed: Yes
Contiguous: Yes
Permitted: Yes
Wet space: No
Addition: No
Conversion: No

1081 Woodcliff Drive, Coleman, South Elgin, Kane County, Illinois, United States, 60177

18 Floor 2 - Bath



Dimensions: 17'10" x 6'7"
Area: 95 sq. ft
Counted as living area: Yes

Heated: Yes
Finished: Yes
Enclosed: Yes
Contiguous: Yes
Permitted: Yes
Wet space: Yes
Addition: No
Conversion: No

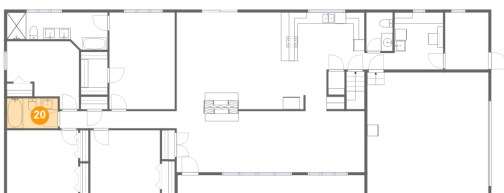
19 Floor 2 - Bedroom



Dimensions: 11'7" x 17'1"
Area: 198 sq. ft
Counted as living area: Yes

Heated: Yes
Finished: Yes
Enclosed: Yes
Contiguous: Yes
Permitted: Yes
Wet space: No
Addition: No
Conversion: No

20 Floor 2 - Bath



Dimensions: 9'0" x 5'1"
Area: 48 sq. ft
Counted as living area: Yes

Heated: Yes
Finished: Yes
Enclosed: Yes
Contiguous: Yes
Permitted: Yes
Wet space: Yes
Addition: No
Conversion: No

**1081 Woodcliff Drive, Coleman, South Elgin, Kane
County, Illinois, United States, 60177**

21 Floor 2 - Mudroom



Dimensions: 7'8" x 10'1"
Area: 78 sq. ft
Counted as living area: No

Heated: Yes
Finished: No
Enclosed: Yes
Contiguous: Yes
Permitted: Yes
Wet space: No
Addition: No
Conversion: No

22 Floor 2 - Bedroom



Dimensions: 12'9" x 12'0"
Area: 118 sq. ft
Counted as living area: Yes

Heated: Yes
Finished: Yes
Enclosed: Yes
Contiguous: Yes
Permitted: Yes
Wet space: No
Addition: No
Conversion: No