

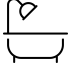




6378 Spring Run Drive, Homeplace, Roanoke, Roanoke County, Virginia, United States, 24018

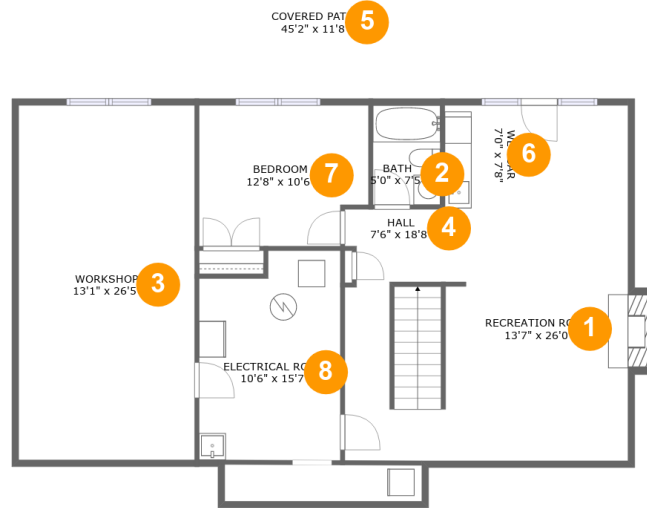


Property Summary

 **1** garages  **5** bedrooms  **3** bathrooms  **1** half baths

 **3** floors  **3,446** Gross Living Area sqft  **5,967** total sqft

6378 Spring Run Drive, Homeplace, Roanoke, Roanoke County, Virginia, United States, 24018



Room Dimensions

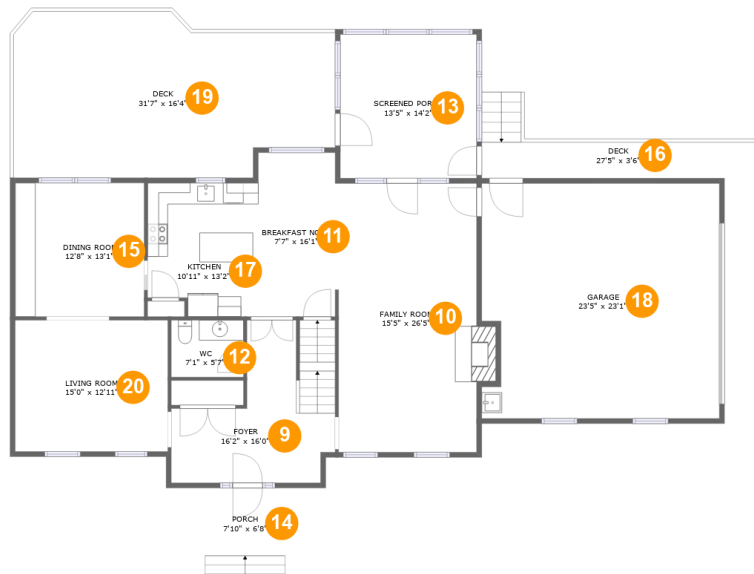
Floor 1

Total sqft: 1861

Living area: 735

#	Room name	Dimensions	Area (sqft)	Counted as Living Area
1	Recreation Room	13'7" x 26'0"	317 sq. ft	Yes
2	Bath	5'0" x 7'5"	37 sq. ft	Yes
3	Workshop	13'1" x 26'5"	346 sq. ft	No
4	Hall	7'6" x 18'8"	131 sq. ft	Yes
5	Covered Patio	45'2" x 11'8"	528 sq. ft	No
6	Wet Bar	7'0" x 7'8"	54 sq. ft	Yes
7	Bedroom	12'8" x 10'6"	126 sq. ft	Yes
8	Electrical Room	10'6" x 15'7"	154 sq. ft	No

6378 Spring Run Drive, Homeplace, Roanoke, Roanoke County, Virginia, United States, 24018



Room Dimensions

Floor 2

Total sqft: 2741

Living area: 1346

#	Room name	Dimensions	Area (sqft)	Counted as Living Area
9	Foyer	16'2" x 16'0"	187 sq. ft	Yes
10	Family Room	15'5" x 26'5"	373 sq. ft	Yes
11	Breakfast Nook	7'7" x 16'1"	123 sq. ft	Yes
12	Wc	7'1" x 5'7"	40 sq. ft	Yes
13	Screened Porch	13'5" x 14'2"	190 sq. ft	No
14	Porch	7'10" x 6'8"	52 sq. ft	No
15	Dining Room	12'8" x 13'1"	167 sq. ft	Yes
16	Deck	27'5" x 3'6"	97 sq. ft	No
17	Kitchen	10'11" x 13'2"	135 sq. ft	Yes
18	Garage	23'5" x 23'1"	528 sq. ft	No
19	Deck	31'7" x 16'4"	460 sq. ft	No

Scan captured on Tue, 02 Jul 2024 18:26:12 GMT

Information is calculated by CubiCasa technology; deemed highly reliable but not guaranteed.

**6378 Spring Run Drive, Homeplace, Roanoke,
Roanoke County, Virginia, United States, 24018**

#	Room name	Dimensions	Area (sqft)	Counted as Living Area
20	Living Room	15'0" x 12'11"	194 sq. ft	Yes

6378 Spring Run Drive, Homeplace, Roanoke, Roanoke County, Virginia, United States, 24018



Room Dimensions

Floor 3

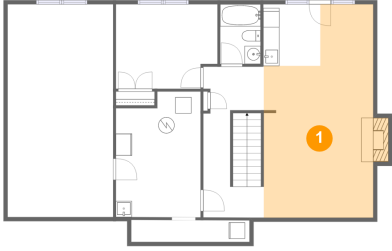
Total sqft: 1365

Living area: 1365

#	Room name	Dimensions	Area (sqft)	Counted as Living Area
21	Primary Bath	13'9" x 12'5"	143 sq. ft	Yes
22	Primary Bedroom	13'7" x 18'7"	253 sq. ft	Yes
23	Bedroom	15'0" x 12'11"	168 sq. ft	Yes
24	Bedroom	14'8" x 16'0"	203 sq. ft	Yes
25	Bath	9'5" x 9'5"	72 sq. ft	Yes
26	Hall	19'6" x 3'4"	97 sq. ft	Yes
27	W.i.c.	7'5" x 7'6"	56 sq. ft	Yes
28	Bedroom	11'8" x 13'2"	153 sq. ft	Yes

6378 Spring Run Drive, Homeplace, Roanoke, Roanoke County, Virginia, United States, 24018

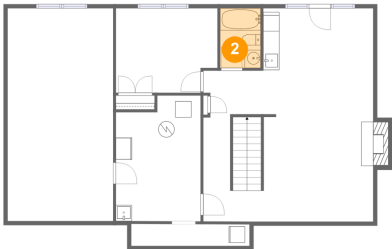
1 Floor 1 - Recreation Room



Dimensions: 13'7" x 26'0"
Area: 317 sq. ft
Counted as Living Area:
Yes

Heated: Yes
Finished: Yes
Enclosed: Yes
Contiguous:
Yes
Permitted: Yes
Wet Space: No
Addition: No
Conversion: No

2 Floor 1 - Bath

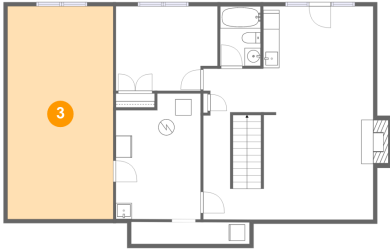


Dimensions: 5'0" x 7'5"
Area: 37 sq. ft
Counted as Living Area:
Yes

Heated: Yes
Finished: Yes
Enclosed: Yes
Contiguous:
Yes
Permitted: Yes
Wet Space: Yes
Addition: No
Conversion: No

6378 Spring Run Drive, Homeplace, Roanoke, Roanoke County, Virginia, United States, 24018

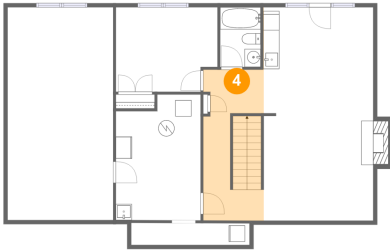
3 Floor 1 - Workshop



Dimensions: 13'1" x 26'5"
Area: 346 sq. ft
Counted as Living Area: No

Heated: No
Finished: No
Enclosed: Yes
Contiguous: No
Permitted: Yes
Wet Space: No
Addition: No
Conversion: No

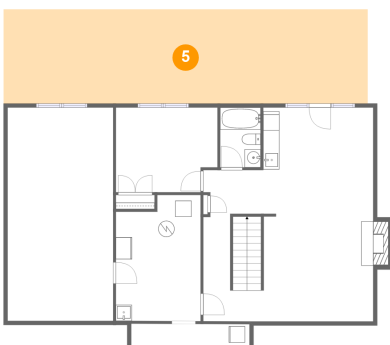
4 Floor 1 - Hall



Dimensions: 7'6" x 18'8"
Area: 131 sq. ft
Counted as Living Area:
Yes

Heated: Yes
Finished: Yes
Enclosed: Yes
Contiguous:
Yes
Permitted: Yes
Wet Space: No
Addition: No
Conversion: No

5 Floor 1 - Covered Patio



Dimensions: 45'2" x 11'8"
Area: 528 sq. ft
Counted as Living Area: No

Heated: No
Finished: No
Enclosed: No
Contiguous: Yes
Permitted: Yes
Wet Space: No
Addition: No
Conversion: No

6378 Spring Run Drive, Homeplace, Roanoke, Roanoke County, Virginia, United States, 24018

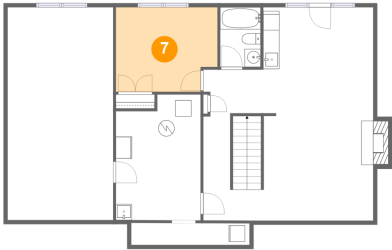
6 Floor 1 - Wet Bar



Dimensions: 7'0" x 7'8"
Area: 54 sq. ft
Counted as Living Area:
Yes

Heated: Yes
Finished: Yes
Enclosed: Yes
Contiguous:
Yes
Permitted: Yes
Wet Space: No
Addition: No
Conversion: No

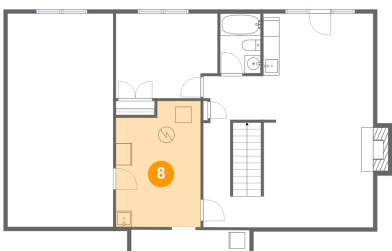
7 Floor 1 - Bedroom



Dimensions: 12'8" x 10'6"
Area: 126 sq. ft
Counted as Living Area:
Yes

Heated: Yes
Finished: Yes
Enclosed: Yes
Contiguous:
Yes
Permitted: Yes
Wet Space: No
Addition: No
Conversion: No

8 Floor 1 - Electrical Room

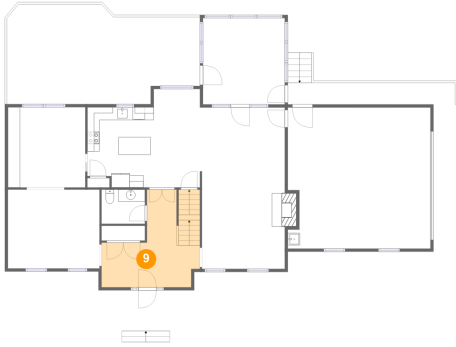


Dimensions: 10'6" x 15'7"
Area: 154 sq. ft
Counted as Living Area: No

Heated: No
Finished: No
Enclosed: Yes
Contiguous: Yes
Permitted: Yes
Wet Space: No
Addition: No
Conversion: No

6378 Spring Run Drive, Homeplace, Roanoke, Roanoke County, Virginia, United States, 24018

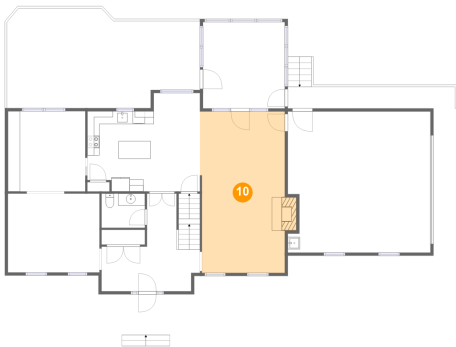
9 Floor 2 - Foyer



Dimensions: 16'2" x 16'0"
Area: 187 sq. ft
Counted as Living Area:
Yes

Heated: Yes
Finished: Yes
Enclosed: Yes
Contiguous:
Yes
Permitted: Yes
Wet Space: No
Addition: No
Conversion: No

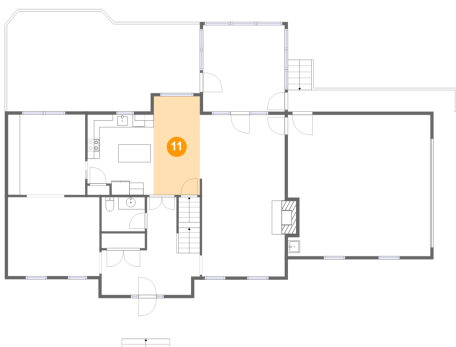
10 Floor 2 - Family Room



Dimensions: 15'5" x 26'5"
Area: 373 sq. ft
Counted as Living Area:
Yes

Heated: Yes
Finished: Yes
Enclosed: Yes
Contiguous:
Yes
Permitted: Yes
Wet Space: No
Addition: No
Conversion: No

11 Floor 2 - Breakfast Nook

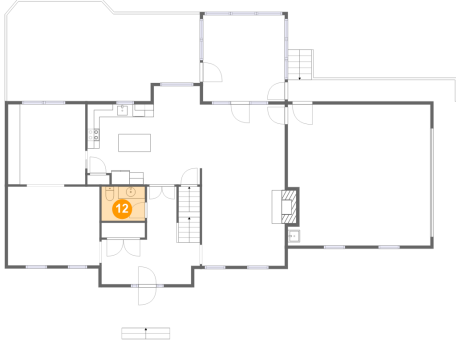


Dimensions: 7'7" x 16'1"
Area: 123 sq. ft
Counted as Living Area:
Yes

Heated: Yes
Finished: Yes
Enclosed: Yes
Contiguous:
Yes
Permitted: Yes
Wet Space: No
Addition: No
Conversion: No

6378 Spring Run Drive, Homeplace, Roanoke, Roanoke County, Virginia, United States, 24018

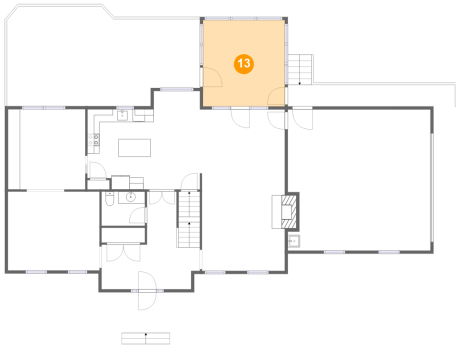
12 Floor 2 - Wc



Dimensions: 7'1" x 5'7"
Area: 40 sq. ft
Counted as Living Area:
Yes

Heated: Yes
Finished: Yes
Enclosed: Yes
Contiguous:
Yes
Permitted: Yes
Wet Space: Yes
Addition: No
Conversion: No

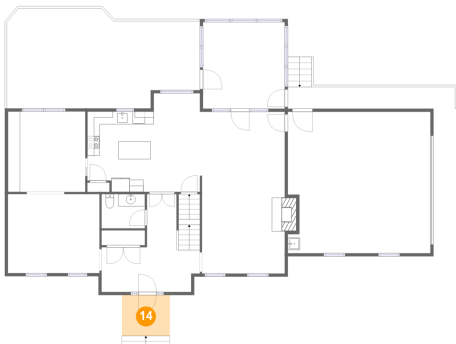
13 Floor 2 - Screened Porch



Dimensions: 13'5" x 14'2"
Area: 190 sq. ft
Counted as Living Area: No

Heated: No
Finished: No
Enclosed: No
Contiguous: Yes
Permitted: Yes
Wet Space: No
Addition: No
Conversion: No

14 Floor 2 - Porch

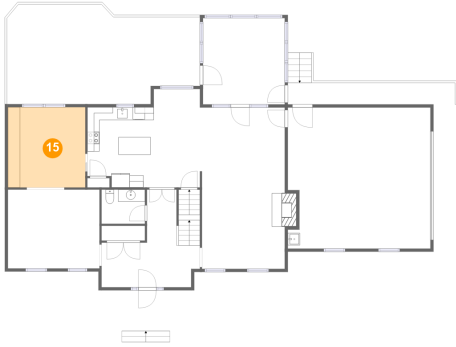


Dimensions: 7'10" x 6'8"
Area: 52 sq. ft
Counted as Living Area: No

Heated: No
Finished: No
Enclosed: No
Contiguous: Yes
Permitted: Yes
Wet Space: No
Addition: No
Conversion: No

6378 Spring Run Drive, Homeplace, Roanoke, Roanoke County, Virginia, United States, 24018

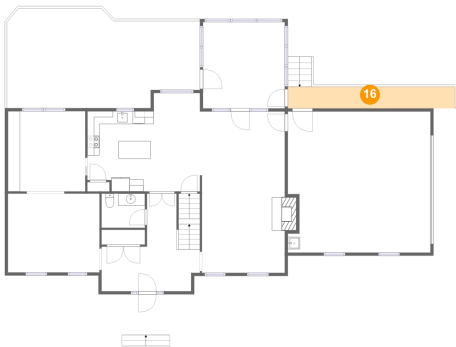
15 Floor 2 - Dining Room



Dimensions: 12'8" x 13'1"
Area: 167 sq. ft
Counted as Living Area:
Yes

Heated: Yes
Finished: Yes
Enclosed: Yes
Contiguous:
Yes
Permitted: Yes
Wet Space: No
Addition: No
Conversion: No

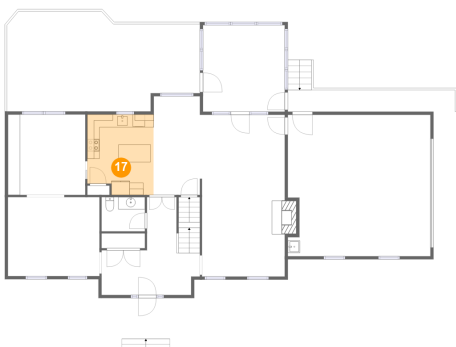
16 Floor 2 - Deck



Dimensions: 27'5" x 3'6"
Area: 97 sq. ft
Counted as Living Area: No

Heated: No
Finished: No
Enclosed: No
Contiguous: Yes
Permitted: Yes
Wet Space: No
Addition: No
Conversion: No

17 Floor 2 - Kitchen

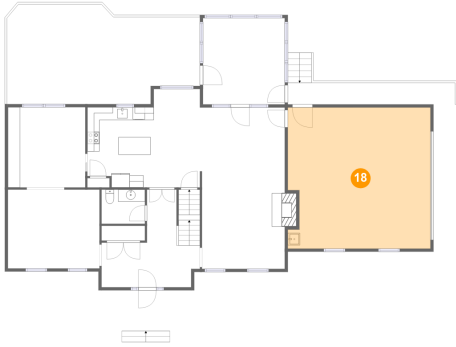


Dimensions: 10'11" x 13'2"
Area: 135 sq. ft
Counted as Living Area:
Yes

Heated: Yes
Finished: Yes
Enclosed: Yes
Contiguous:
Yes
Permitted: Yes
Wet Space: No
Addition: No
Conversion: No

6378 Spring Run Drive, Homeplace, Roanoke, Roanoke County, Virginia, United States, 24018

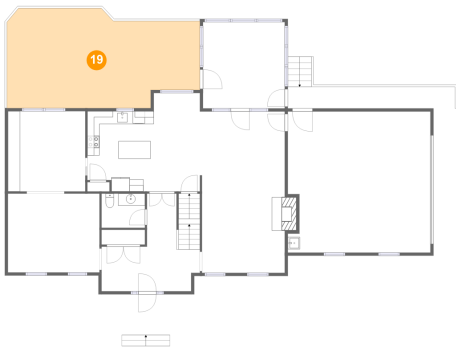
18 Floor 2 - Garage



Dimensions: 23'5" x 23'1"
Area: 528 sq. ft
Counted as Living Area: No

Heated: No
Finished: No
Enclosed: Yes
Contiguous: Yes
Permitted: Yes
Wet Space: No
Addition: No
Conversion: No

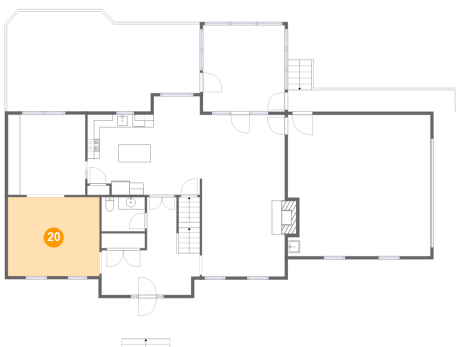
19 Floor 2 - Deck



Dimensions: 31'7" x 16'4"
Area: 460 sq. ft
Counted as Living Area: No

Heated: No
Finished: No
Enclosed: No
Contiguous: No
Permitted: Yes
Wet Space: No
Addition: No
Conversion: No

20 Floor 2 - Living Room

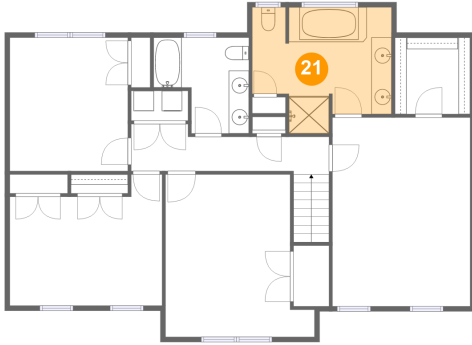


Dimensions: 15'0" x 12'11"
Area: 194 sq. ft
Counted as Living Area:
Yes

Heated: Yes
Finished: Yes
Enclosed: Yes
Contiguous:
Yes
Permitted: Yes
Wet Space: No
Addition: No
Conversion: No

6378 Spring Run Drive, Homeplace, Roanoke, Roanoke County, Virginia, United States, 24018

21 Floor 3 - Primary Bath



Dimensions: 13'9" x 12'5"
Area: 143 sq. ft
Counted as Living Area:
Yes

Heated: Yes
Finished: Yes
Enclosed: Yes
Contiguous:
Yes
Permitted: Yes
Wet Space: Yes
Addition: No
Conversion: No

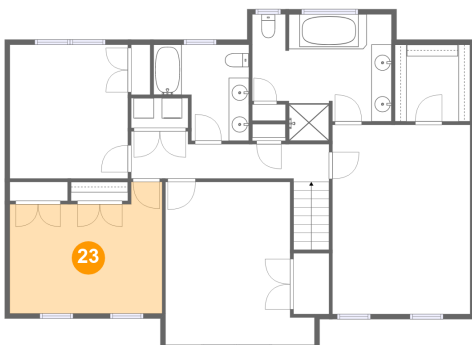
22 Floor 3 - Primary Bedroom



Dimensions: 13'7" x 18'7"
Area: 253 sq. ft
Counted as Living Area:
Yes

Heated: Yes
Finished: Yes
Enclosed: Yes
Contiguous:
Yes
Permitted: Yes
Wet Space: No
Addition: No
Conversion: No

23 Floor 3 - Bedroom



Dimensions: 15'0" x 12'11"
Area: 168 sq. ft
Counted as Living Area:
Yes

Heated: Yes
Finished: Yes
Enclosed: Yes
Contiguous:
Yes
Permitted: Yes
Wet Space: No
Addition: No
Conversion: No

6378 Spring Run Drive, Homeplace, Roanoke, Roanoke County, Virginia, United States, 24018

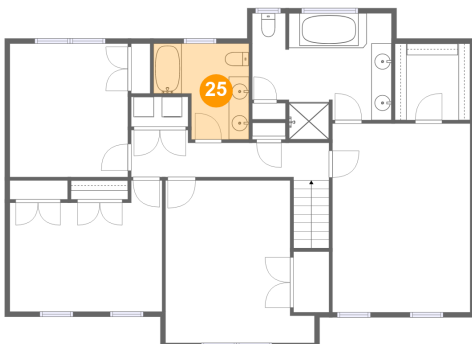
24 Floor 3 - Bedroom



Dimensions: 14'8" x 16'0"
Area: 203 sq. ft
Counted as Living Area:
Yes

Heated: Yes
Finished: Yes
Enclosed: Yes
Contiguous:
Yes
Permitted: Yes
Wet Space: No
Addition: No
Conversion: No

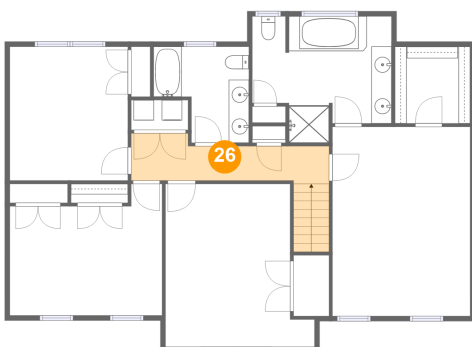
25 Floor 3 - Bath



Dimensions: 9'5" x 9'5"
Area: 72 sq. ft
Counted as Living Area:
Yes

Heated: Yes
Finished: Yes
Enclosed: Yes
Contiguous:
Yes
Permitted: Yes
Wet Space: Yes
Addition: No
Conversion: No

26 Floor 3 - Hall

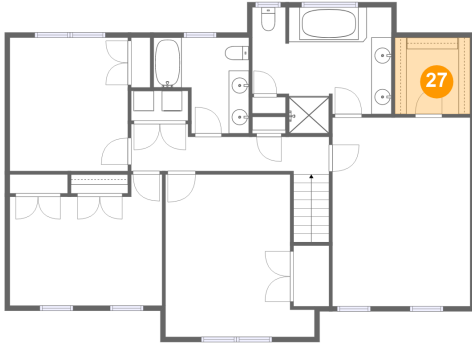


Dimensions: 19'6" x 3'4"
Area: 97 sq. ft
Counted as Living Area:
Yes

Heated: Yes
Finished: Yes
Enclosed: Yes
Contiguous:
Yes
Permitted: Yes
Wet Space: No
Addition: No
Conversion: No

6378 Spring Run Drive, Homeplace, Roanoke, Roanoke County, Virginia, United States, 24018

27 Floor 3 - W.i.c.



Dimensions: 7'5" x 7'6"
Area: 56 sq. ft
Counted as Living Area:
Yes

Heated: Yes
Finished: Yes
Enclosed: Yes
Contiguous:
Yes
Permitted: Yes
Wet Space: No
Addition: No
Conversion: No

28 Floor 3 - Bedroom



Dimensions: 11'8" x 13'2"
Area: 153 sq. ft
Counted as Living Area:
Yes

Heated: Yes
Finished: Yes
Enclosed: Yes
Contiguous:
Yes
Permitted: Yes
Wet Space: No
Addition: No
Conversion: No