

3593 Brughs Mill Road, Fincastle, Botetourt County, Virginia, United States, 24090




Property Summary

 **1** garages

 **4** bedrooms

 **2** bathrooms

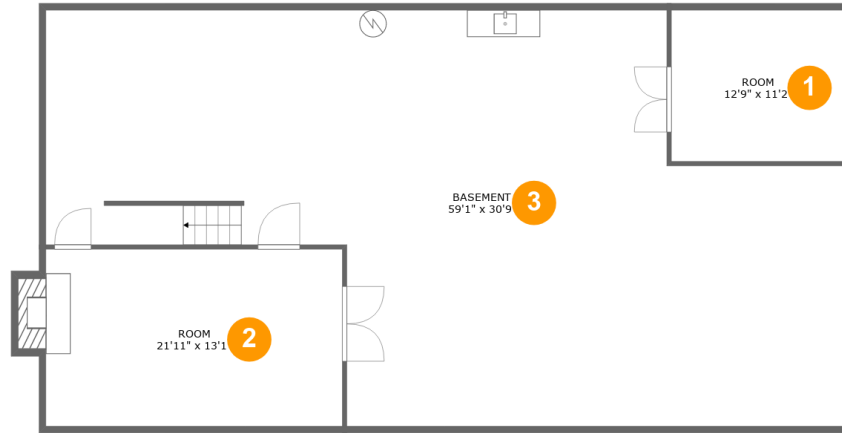
 **0** half baths

 **2** floors

 **1,900** Gross Living Area sqft

 **4,936** total sqft

3593 Brughs Mill Road, Fincastle, Botetourt County, Virginia, United States, 24090



Room Dimensions

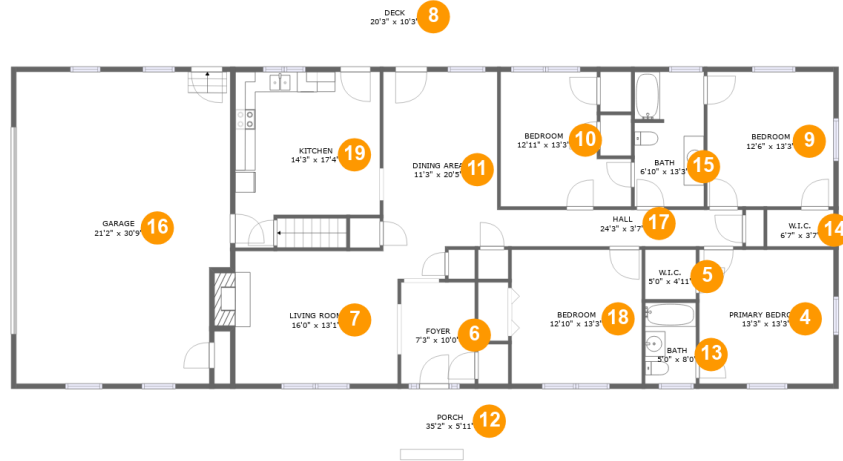
Floor 1

Total sqft: 1922

Living area: 0

#	Room name	Dimensions	Area (sqft)	Counted as Living Area
1	Room	12'9" x 11'2"	143 sq. ft	No
2	Room	21'11" x 13'1"	298 sq. ft	No
3	Basement	59'1" x 30'9"	1368 sq. ft	No

3593 Brughs Mill Road, Fincastle, Botetourt County, Virginia, United States, 24090



Room Dimensions

Floor 2

Total sqft: 3014

Living area: 1900

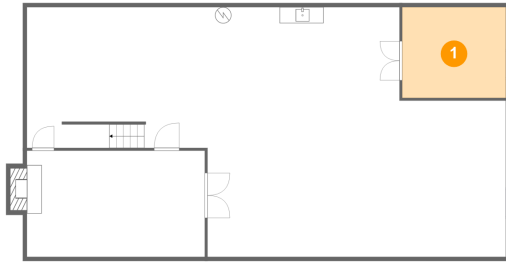
#	Room name	Dimensions	Area (sqft)	Counted as Living Area
4	Primary Bedroom	13'3" x 13'3"	175 sq. ft	Yes
5	W.i.c.	5'0" x 4'11"	24 sq. ft	Yes
6	Foyer	7'3" x 10'0"	73 sq. ft	Yes
7	Living Room	16'0" x 13'1"	219 sq. ft	Yes
8	Deck	20'3" x 10'3"	209 sq. ft	No
9	Bedroom	12'6" x 13'3"	166 sq. ft	Yes
10	Bedroom	12'11" x 13'3"	142 sq. ft	Yes
11	Dining Area	11'3" x 20'5"	211 sq. ft	Yes
12	Porch	35'2" x 5'11"	209 sq. ft	No
13	Bath	5'0" x 8'0"	40 sq. ft	Yes
14	W.i.c.	6'7" x 3'7"	24 sq. ft	Yes

**3593 Brughs Mill Road, Fincastle, Botetourt
County, Virginia, United States, 24090**

#	Room name	Dimensions	Area (sqft)	Counted as Living Area
15	Bath	6'10" x 13'3"	90 sq. ft	Yes
16	Garage	21'2" x 30'9"	626 sq. ft	No
17	Hall	24'3" x 3'7"	87 sq. ft	Yes
18	Bedroom	12'10" x 13'3"	170 sq. ft	Yes
19	Kitchen	14'3" x 17'4"	214 sq. ft	Yes

3593 Brughs Mill Road, Fincastle, Botetourt County, Virginia, United States, 24090

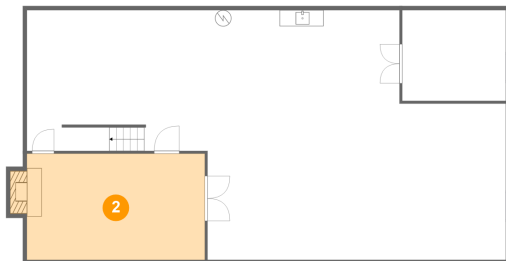
1 Floor 1 - Room



Dimensions: 12'9" x 11'2"
Area: 143 sq. ft
Counted as Living Area: No

Heated: Yes
Finished: Yes
Enclosed: Yes
Contiguous: No
Permitted: Yes
Wet Space: No
Addition: No
Conversion: No

2 Floor 1 - Room

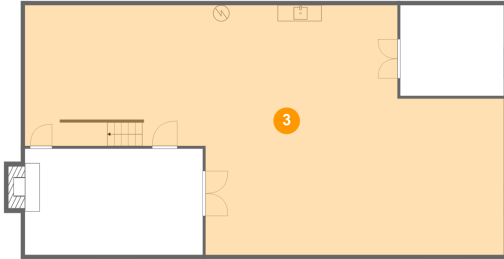


Dimensions: 21'11" x 13'1"
Area: 298 sq. ft
Counted as Living Area: No

Heated: Yes
Finished: Yes
Enclosed: Yes
Contiguous: No
Permitted: Yes
Wet Space: No
Addition: No
Conversion: No

3593 Brughs Mill Road, Fincastle, Botetourt County, Virginia, United States, 24090

3 Floor 1 - Basement



Dimensions: 59'1" x 30'9"
Area: 1368 sq. ft
Counted as Living Area: No

Heated: No
Finished: No
Enclosed: Yes
Contiguous: Yes
Permitted: Yes
Wet Space: No
Addition: No
Conversion: No

4 Floor 2 - Primary Bedroom



Dimensions: 13'3" x 13'3"
Area: 175 sq. ft
Counted as Living Area: Yes

Heated: Yes
Finished: Yes
Enclosed: Yes
Contiguous: Yes
Permitted: Yes
Wet Space: No
Addition: No
Conversion: No

5 Floor 2 - W.i.c.



Dimensions: 5'0" x 4'11"
Area: 24 sq. ft
Counted as Living Area: Yes

Heated: Yes
Finished: Yes
Enclosed: Yes
Contiguous: Yes
Permitted: Yes
Wet Space: No
Addition: No
Conversion: No

3593 Brughs Mill Road, Fincastle, Botetourt County, Virginia, United States, 24090

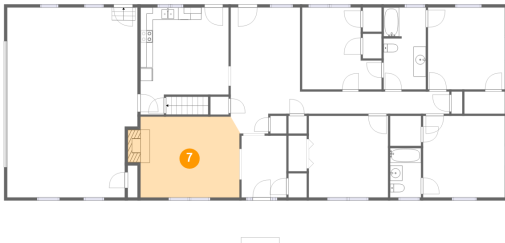
6 Floor 2 - Foyer



Dimensions: 7'3" x 10'0"
Area: 73 sq. ft
Counted as Living Area:
Yes

Heated: Yes
Finished: Yes
Enclosed: Yes
Contiguous:
Yes
Permitted: Yes
Wet Space: No
Addition: No
Conversion: No

7 Floor 2 - Living Room



Dimensions: 16'0" x 13'1"
Area: 219 sq. ft
Counted as Living Area:
Yes

Heated: Yes
Finished: Yes
Enclosed: Yes
Contiguous:
Yes
Permitted: Yes
Wet Space: No
Addition: No
Conversion: No

8 Floor 2 - Deck



Dimensions: 20'3" x 10'3"
Area: 209 sq. ft
Counted as Living Area: No

Heated: No
Finished: Yes
Enclosed: No
Contiguous: Yes
Permitted: Yes
Wet Space: No
Addition: No
Conversion: No

3593 Brughs Mill Road, Fincastle, Botetourt County, Virginia, United States, 24090

9 Floor 2 - Bedroom



Dimensions: 12'6" x 13'3"
Area: 166 sq. ft
Counted as Living Area:
Yes

Heated: Yes
Finished: Yes
Enclosed: Yes
Contiguous:
Yes
Permitted: Yes
Wet Space: No
Addition: No
Conversion: No

10 Floor 2 - Bedroom



Dimensions: 12'11" x 13'3"
Area: 142 sq. ft
Counted as Living Area:
Yes

Heated: Yes
Finished: Yes
Enclosed: Yes
Contiguous:
Yes
Permitted: Yes
Wet Space: No
Addition: No
Conversion: No

11 Floor 2 - Dining Area

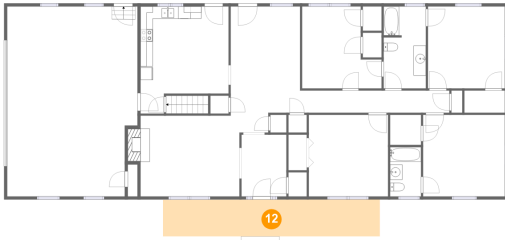


Dimensions: 11'3" x 20'5"
Area: 211 sq. ft
Counted as Living Area:
Yes

Heated: Yes
Finished: Yes
Enclosed: Yes
Contiguous:
Yes
Permitted: Yes
Wet Space: No
Addition: No
Conversion: No

3593 Brughs Mill Road, Fincastle, Botetourt County, Virginia, United States, 24090

12 Floor 2 - Porch



Dimensions: 35'2" x 5'11"
Area: 209 sq. ft
Counted as Living Area: No

Heated: No
Finished: Yes
Enclosed: No
Contiguous: Yes
Permitted: Yes
Wet Space: No
Addition: No
Conversion: No

13 Floor 2 - Bath



Dimensions: 5'0" x 8'0"
Area: 40 sq. ft
Counted as Living Area:
Yes

Heated: Yes
Finished: Yes
Enclosed: Yes
Contiguous:
Yes
Permitted: Yes
Wet Space: Yes
Addition: No
Conversion: No

14 Floor 2 - W.i.c.



Dimensions: 6'7" x 3'7"
Area: 24 sq. ft
Counted as Living Area:
Yes

Heated: Yes
Finished: Yes
Enclosed: Yes
Contiguous:
Yes
Permitted: Yes
Wet Space: No
Addition: No
Conversion: No

3593 Brughs Mill Road, Fincastle, Botetourt County, Virginia, United States, 24090

15 Floor 2 - Bath



Dimensions: 6'10" x 13'3"
Area: 90 sq. ft
Counted as Living Area: Yes

Heated: Yes
Finished: Yes
Enclosed: Yes
Contiguous: Yes
Permitted: Yes
Wet Space: Yes
Addition: No
Conversion: No

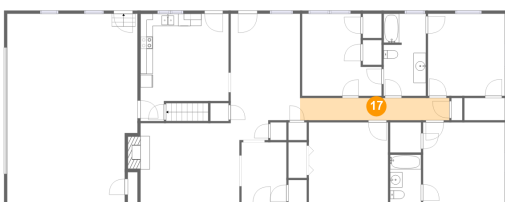
16 Floor 2 - Garage



Dimensions: 21'2" x 30'9"
Area: 626 sq. ft
Counted as Living Area: No

Heated: No
Finished: No
Enclosed: Yes
Contiguous: Yes
Permitted: Yes
Wet Space: No
Addition: No
Conversion: No

17 Floor 2 - Hall



Dimensions: 24'3" x 3'7"
Area: 87 sq. ft
Counted as Living Area: Yes

Heated: Yes
Finished: Yes
Enclosed: Yes
Contiguous: Yes
Permitted: Yes
Wet Space: No
Addition: No
Conversion: No

3593 Brughs Mill Road, Fincastle, Botetourt County, Virginia, United States, 24090

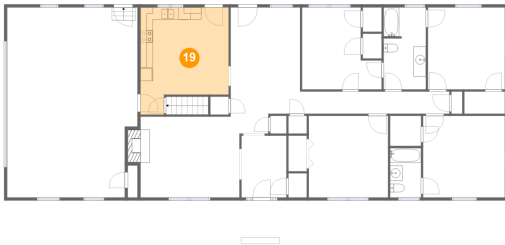
18 Floor 2 - Bedroom



Dimensions: 12'10" x 13'3"
Area: 170 sq. ft
Counted as Living Area:
Yes

Heated: Yes
Finished: Yes
Enclosed: Yes
Contiguous:
Yes
Permitted: Yes
Wet Space: No
Addition: No
Conversion: No

19 Floor 2 - Kitchen



Dimensions: 14'3" x 17'4"
Area: 214 sq. ft
Counted as Living Area:
Yes

Heated: Yes
Finished: Yes
Enclosed: Yes
Contiguous:
Yes
Permitted: Yes
Wet Space: No
Addition: No
Conversion: No