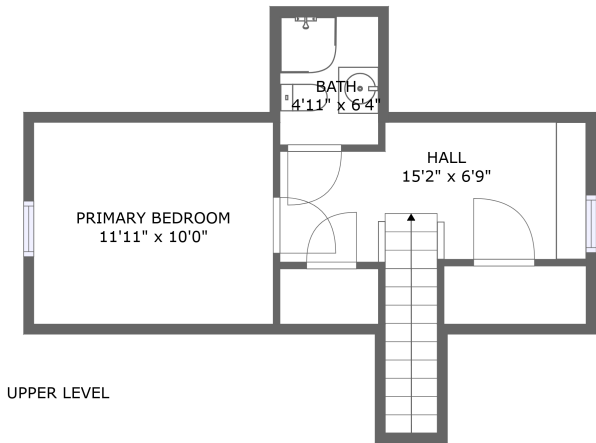
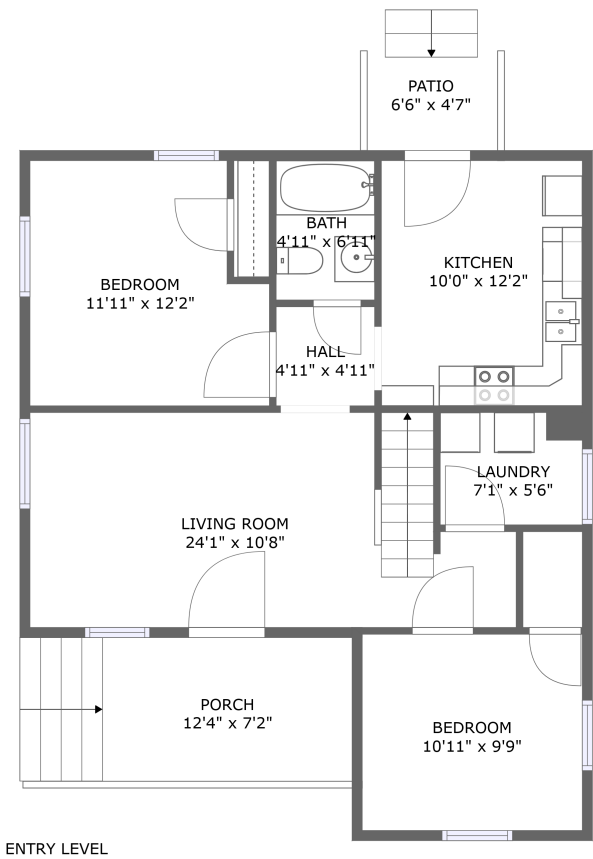


Home report

1404 10th Street Northeast, Roanoke, Roanoke city, Virginia,
United States, 24012




Total GLA: 1097 sq. ft

Floor 1: 806 sq. ft, Floor 2: 291 sq. ft

Excluded: Patio 30 sq. ft, Porch 88 sq. ft, Low ceiling 71 sq. ft

Property summary

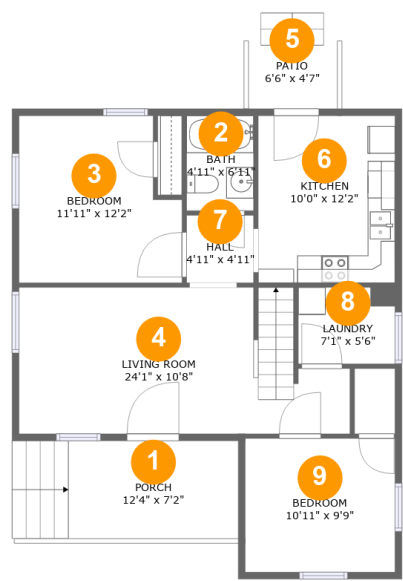
 **2** Floors

 **3** Bedrooms

 **2** Bathrooms

Home report

1404 10th Street Northeast, Roanoke, Roanoke city, Virginia,
United States, 24012



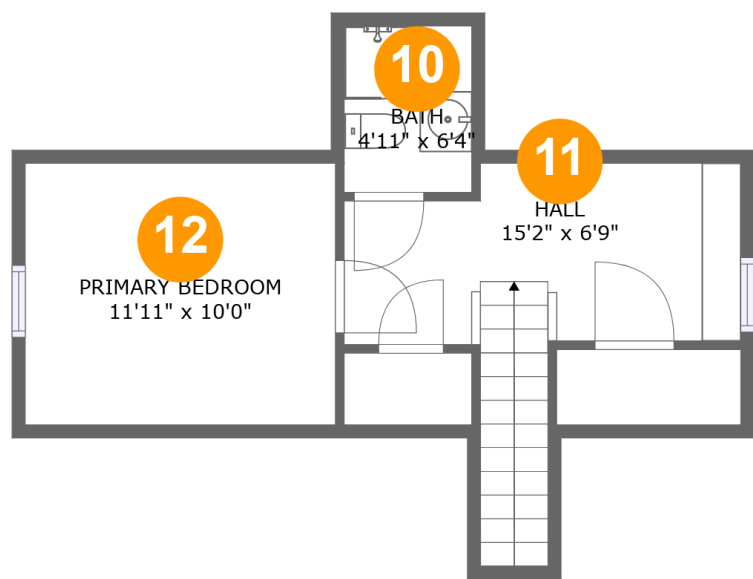
Room dimensions

Floor 1 Total:806sqft Excluded: 118sqft

#		Max Dimensions	sqft	Included
1	Porch	12'4" x 7'2"	88 sq. ft	No
2	Bath	4'11" x 6'11"	34 sq. ft	Yes
3	Bedroom	11'11" x 12'2"	132 sq. ft	Yes
4	Living Room	24'1" x 10'8"	232 sq. ft	Yes
5	Patio	6'6" x 4'7"	30 sq. ft	No
6	Kitchen	10'0" x 12'2"	121 sq. ft	Yes
7	Hall	4'11" x 4'11"	24 sq. ft	Yes
8	Laundry	7'1" x 5'6"	39 sq. ft	Yes
9	Bedroom	10'11" x 9'9"	106 sq. ft	Yes

Home report

1404 10th Street Northeast, Roanoke, Roanoke city, Virginia,
United States, 24012



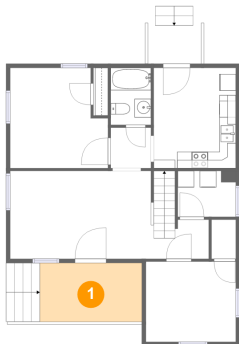
Room dimensions

Floor 2 Total:291sqft Excluded: 71sqft

#		Max Dimensions	sqft	Included
10	Bath	4'11" x 6'4"	31 sq. ft	Yes
11	Hall	15'2" x 6'9"	119 sq. ft	Yes
12	Primary Bedroom	11'11" x 10'0"	92 sq. ft	Yes

1404 10th Street Northeast, Roanoke, Roanoke city, Virginia,
United States, 24012

1 Floor 1 - Porch



Max Dimensions: 12'4" x 7'2"
Calculated Area: 88 sq. ft
Included: No

Heated: No
Finished: Yes
Enclosed: No
Contiguous: Yes
Permitted: Yes
Wet space: No
Addition: No
Conversion: No

2 Floor 1 - Bath

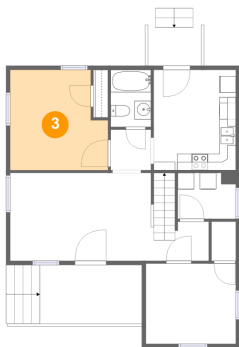


Max Dimensions: 4'11" x 6'11"
Calculated Area: 34 sq. ft
Included: Yes

Heated: Yes
Finished: Yes
Enclosed: Yes
Contiguous: Yes
Permitted: Yes
Wet space: Yes
Addition: No
Conversion: No

1404 10th Street Northeast, Roanoke, Roanoke city, Virginia,
United States, 24012

3 Floor 1 - Bedroom



Max Dimensions: 11'11" x 12'2"
Calculated Area: 132 sq. ft
Included: Yes

Heated: Yes
Finished: Yes
Enclosed: Yes
Contiguous: Yes
Permitted: Yes
Wet space: No
Addition: No
Conversion: No

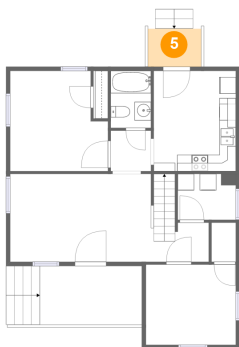
4 Floor 1 - Living Room



Max Dimensions: 24'1" x 10'8"
Calculated Area: 232 sq. ft
Included: Yes

Heated: Yes
Finished: Yes
Enclosed: Yes
Contiguous: Yes
Permitted: Yes
Wet space: No
Addition: No
Conversion: No

5 Floor 1 - Patio

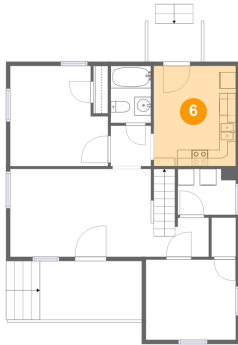


Max Dimensions: 6'6" x 4'7"
Calculated Area: 30 sq. ft
Included: No

Heated: No
Finished: Yes
Enclosed: No
Contiguous: Yes
Permitted: Yes
Wet space: No
Addition: No
Conversion: No

1404 10th Street Northeast, Roanoke, Roanoke city, Virginia,
United States, 24012

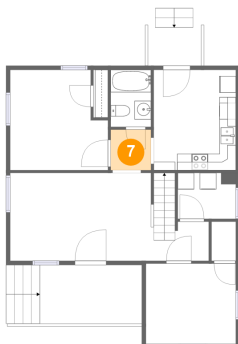
6 Floor 1 - Kitchen



Max Dimensions: 10'0" x 12'2"
Calculated Area: 121 sq. ft
Included: Yes

Heated: Yes
Finished: Yes
Enclosed: Yes
Contiguous: Yes
Permitted: Yes
Wet space: No
Addition: No
Conversion: No

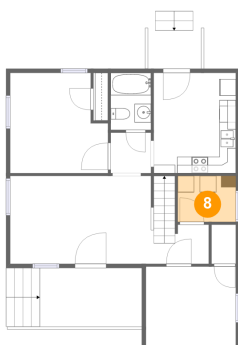
7 Floor 1 - Hall



Max Dimensions: 4'11" x 4'11"
Calculated Area: 24 sq. ft
Included: Yes

Heated: Yes
Finished: Yes
Enclosed: Yes
Contiguous: Yes
Permitted: Yes
Wet space: No
Addition: No
Conversion: No

8 Floor 1 - Laundry



Max Dimensions: 7'1" x 5'6"
Calculated Area: 39 sq. ft
Included: Yes

Heated: Yes
Finished: Yes
Enclosed: Yes
Contiguous: Yes
Permitted: Yes
Wet space: No
Addition: No
Conversion: No

1404 10th Street Northeast, Roanoke, Roanoke city, Virginia,
United States, 24012

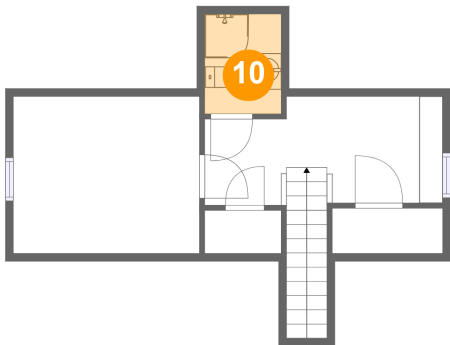
9 Floor 1 - Bedroom



Max Dimensions: 10'11" x 9'9"
Calculated Area: 106 sq. ft
Included: Yes

Heated: Yes
Finished: Yes
Enclosed: Yes
Contiguous: Yes
Permitted: Yes
Wet space: No
Addition: No
Conversion: No

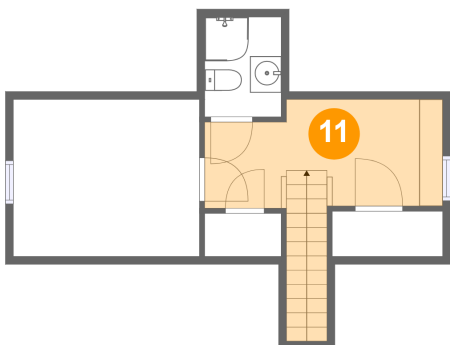
10 Floor 2 - Bath



Max Dimensions: 4'11" x 6'4"
Calculated Area: 31 sq. ft
Included: Yes

Heated: Yes
Finished: Yes
Enclosed: Yes
Contiguous: Yes
Permitted: Yes
Wet space: Yes
Addition: No
Conversion: No

11 Floor 2 - Hall

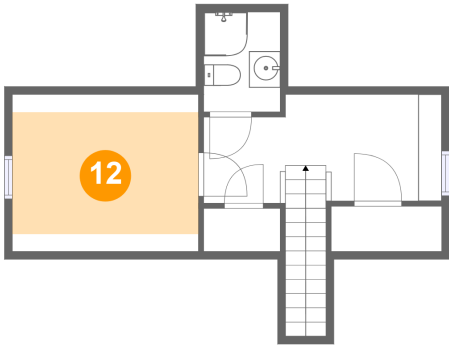


Max Dimensions: 15'2" x 6'9"
Calculated Area: 119 sq. ft
Included: Yes

Heated: Yes
Finished: Yes
Enclosed: Yes
Contiguous: Yes
Permitted: Yes
Wet space: No
Addition: No
Conversion: No

1404 10th Street Northeast, Roanoke, Roanoke city, Virginia,
United States, 24012

12 Floor 2 - Primary Bedroom



Max Dimensions: 11'11" x 10'0"
Calculated Area: 92 sq. ft
Included: Yes

Heated: Yes
Finished: Yes
Enclosed: Yes
Contiguous: Yes
Permitted: Yes
Wet space: No
Addition: No
Conversion: No