

36823 Shoemaker School Rd, Purcellville, VA, US



Property summary

 **1** Garages

 **5** Bedrooms

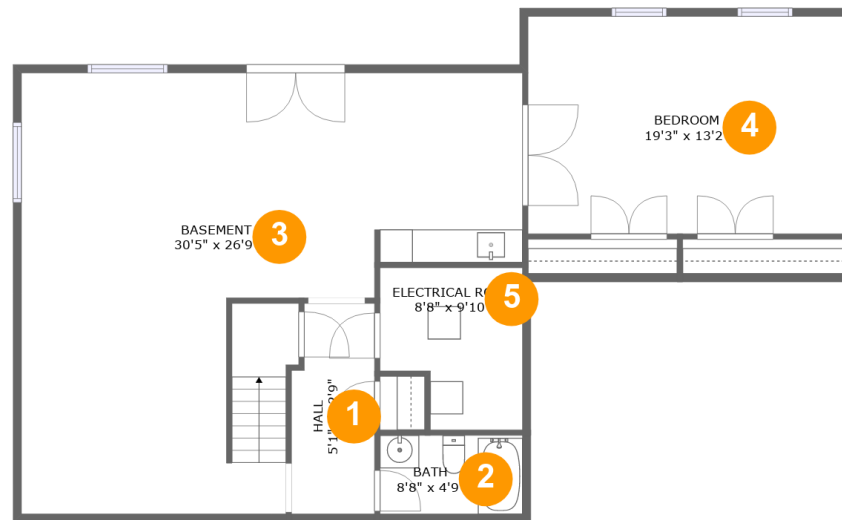
 **3** Bathrooms

 **1** Half baths

 **3** Floors

 **4,203** Gross living area sqft

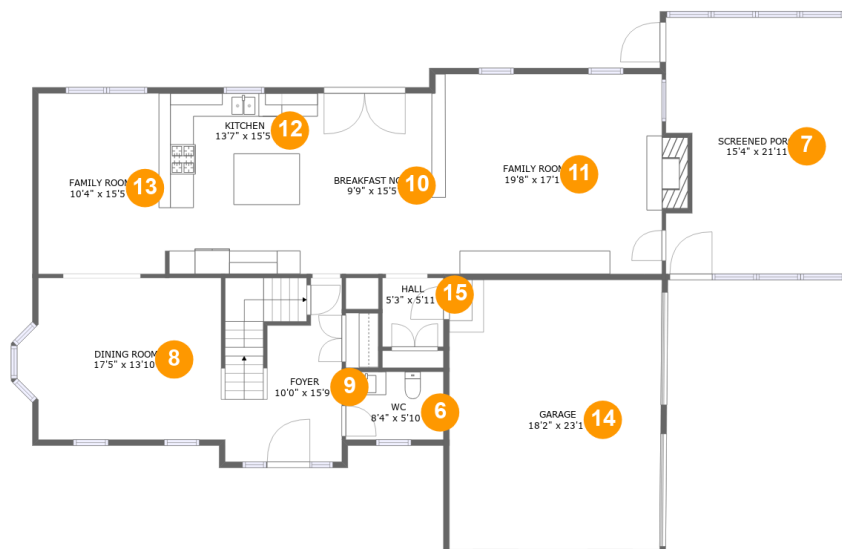
 **5,191** Total sqft

36823 Shoemaker School Rd, Purcellville, VA, US**Room dimensions**

Floor 1

Total sqft: 1202 Living area: 1123

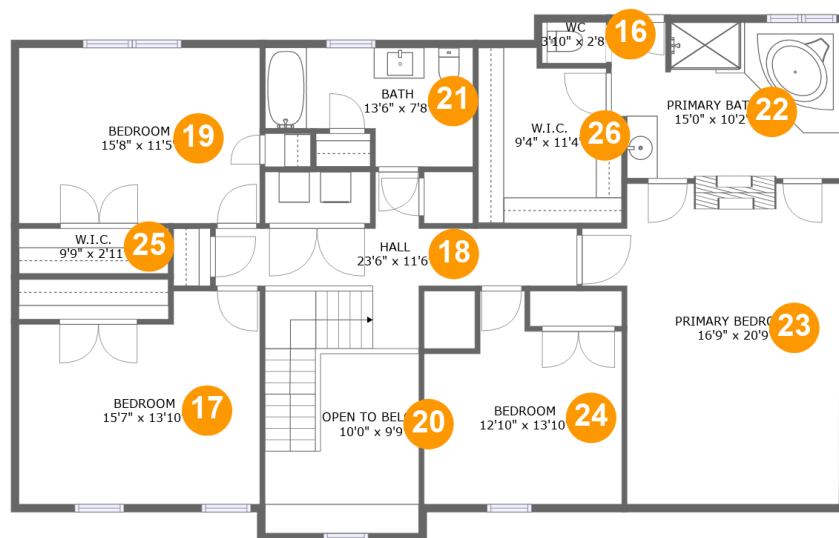
#		Dimensions	sqft	Counted as living area
1	Hall	5'1" x 12'9"	61 sq. ft	Yes
2	Bath	8'8" x 4'9"	41 sq. ft	Yes
3	Basement	30'5" x 26'9"	605 sq. ft	Yes
4	Bedroom	19'3" x 13'2"	254 sq. ft	Yes
5	Electrical Room	8'8" x 9'10"	74 sq. ft	No

36823 Shoemaker School Rd, Purcellville, VA, US**Room dimensions**

Floor 2

Total sqft: 2269 Living area: 1461

#		Dimensions	sqft	Counted as living area
6	WC	8'4" x 5'10"	49 sq. ft	Yes
7	Screened Porch	15'4" x 21'11"	321 sq. ft	No
8	Dining Room	17'5" x 13'10"	227 sq. ft	Yes
9	Foyer	10'0" x 15'9"	154 sq. ft	Yes
10	Breakfast Nook	9'9" x 15'5"	151 sq. ft	Yes
11	Family Room	19'8" x 17'1"	350 sq. ft	Yes
12	Kitchen	13'7" x 15'5"	209 sq. ft	Yes
13	Family Room	10'4" x 15'5"	160 sq. ft	Yes
14	Garage	18'2" x 23'1"	417 sq. ft	No
15	Hall	5'3" x 5'11"	31 sq. ft	Yes

36823 Shoemaker School Rd, Purcellville, VA, US**Room dimensions**

Floor 3

Total sqft: 1720 Living area: 1619

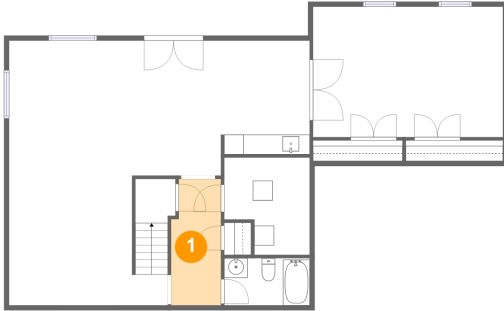
#		Dimensions	sqft	Counted as living area
16	WC	3'10" x 2'8"	11 sq. ft	Yes
17	Bedroom	15'7" x 13'10"	195 sq. ft	Yes
18	Hall	23'6" x 11'6"	165 sq. ft	Yes
19	Bedroom	15'8" x 11'5"	178 sq. ft	Yes
20	Open To Below	10'0" x 9'9"	94 sq. ft	No
21	Bath	13'6" x 7'8"	86 sq. ft	Yes
22	Primary Bath	15'0" x 10'2"	147 sq. ft	Yes
23	Primary Bedroom	16'9" x 20'9"	301 sq. ft	Yes
24	Bedroom	12'10" x 13'10"	146 sq. ft	Yes
25	W.I.C.	9'9" x 2'11"	29 sq. ft	Yes
26	W.I.C.	9'4" x 11'4"	95 sq. ft	Yes

Scan captured on Fri, 14 Mar 2025 19:52:58 GMT

Information is calculated by Cubicasa technology deemed highly reliable but not guaranteed.

36823 Shoemaker School Rd, Purcellville, VA, US

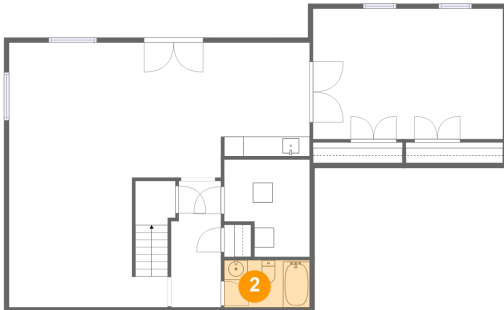
1 Floor 1 - Hall



Dimensions: 5'1" x 12'9"
Area: 61 sq. ft
Counted as living area: Yes

Heated: Yes
Finished: Yes
Enclosed: Yes
Contiguous: Yes
Permitted: Yes
Wet space: No
Addition: No
Conversion: No

2 Floor 1 - Bath

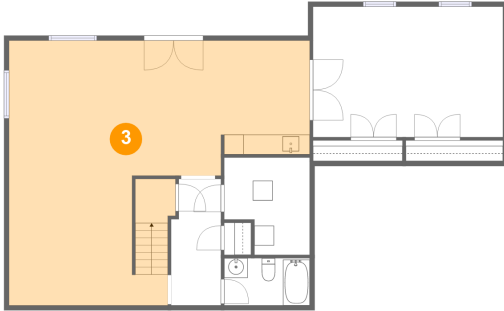


Dimensions: 8'8" x 4'9"
Area: 41 sq. ft
Counted as living area: Yes

Heated: Yes
Finished: Yes
Enclosed: Yes
Contiguous: Yes
Permitted: Yes
Wet space: Yes
Addition: No
Conversion: No

36823 Shoemaker School Rd, Purcellville, VA, US

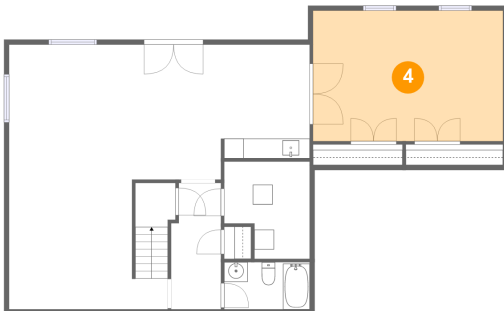
3 Floor 1 - Basement



Dimensions: 30'5" x 26'9"
Area: 605 sq. ft
Counted as living area: Yes

Heated: Yes
Finished: Yes
Enclosed: Yes
Contiguous: Yes
Permitted: Yes
Wet space: No
Addition: No
Conversion: No

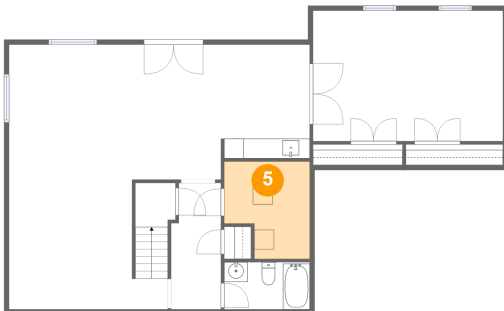
4 Floor 1 - Bedroom



Dimensions: 19'3" x 13'2"
Area: 254 sq. ft
Counted as living area: Yes

Heated: Yes
Finished: Yes
Enclosed: Yes
Contiguous: Yes
Permitted: Yes
Wet space: No
Addition: No
Conversion: No

5 Floor 1 - Electrical Room

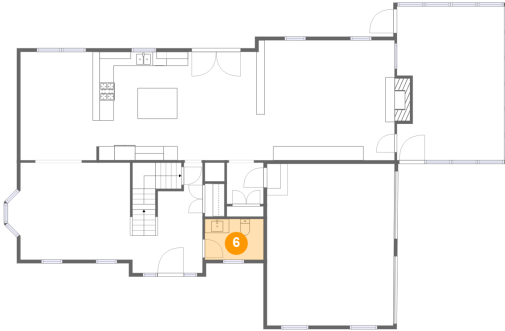


Dimensions: 8'8" x 9'10"
Area: 74 sq. ft
Counted as living area: No

Heated: No
Finished: No
Enclosed: Yes
Contiguous: Yes
Permitted: Yes
Wet space: No
Addition: No
Conversion: No

36823 Shoemaker School Rd, Purcellville, VA, US

6 Floor 2 - WC



Dimensions: 8'4" x 5'10"
Area: 49 sq. ft
Counted as living area: Yes

Heated: Yes
Finished: Yes
Enclosed: Yes
Contiguous: Yes
Permitted: Yes
Wet space: Yes
Addition: No
Conversion: No

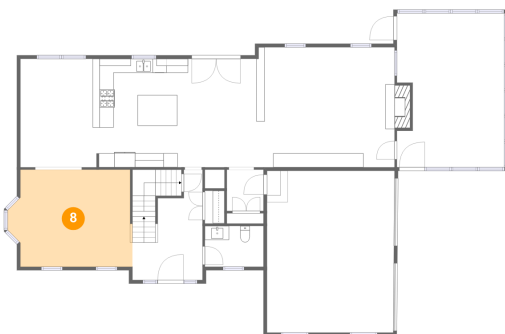
7 Floor 2 - Screened Porch



Dimensions: 15'4" x 21'11"
Area: 321 sq. ft
Counted as living area: No

Heated: No
Finished: Yes
Enclosed: No
Contiguous: Yes
Permitted: Yes
Wet space: No
Addition: No
Conversion: No

8 Floor 2 - Dining Room

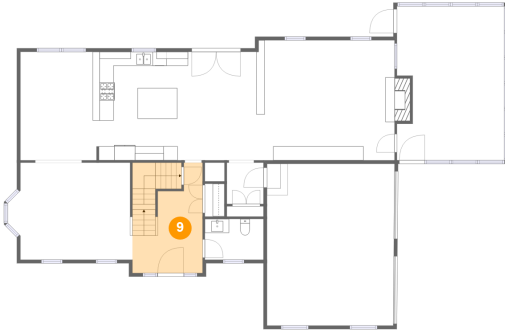


Dimensions: 17'5" x 13'10"
Area: 227 sq. ft
Counted as living area: Yes

Heated: Yes
Finished: Yes
Enclosed: Yes
Contiguous: Yes
Permitted: Yes
Wet space: No
Addition: No
Conversion: No

36823 Shoemaker School Rd, Purcellville, VA, US

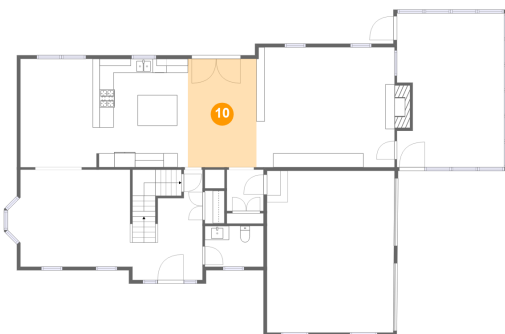
9 Floor 2 - Foyer



Dimensions: 10'0" x 15'9"
Area: 154 sq. ft
Counted as living area: Yes

Heated: Yes
Finished: Yes
Enclosed: Yes
Contiguous: Yes
Permitted: Yes
Wet space: No
Addition: No
Conversion: No

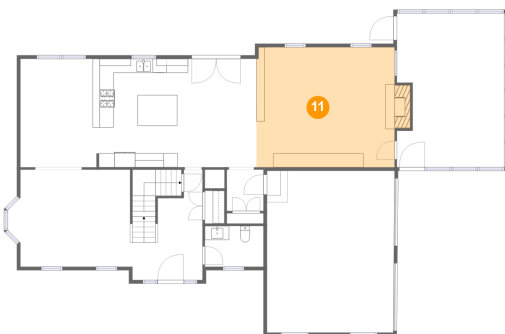
10 Floor 2 - Breakfast Nook



Dimensions: 9'9" x 15'5"
Area: 151 sq. ft
Counted as living area: Yes

Heated: Yes
Finished: Yes
Enclosed: Yes
Contiguous: Yes
Permitted: Yes
Wet space: No
Addition: No
Conversion: No

11 Floor 2 - Family Room

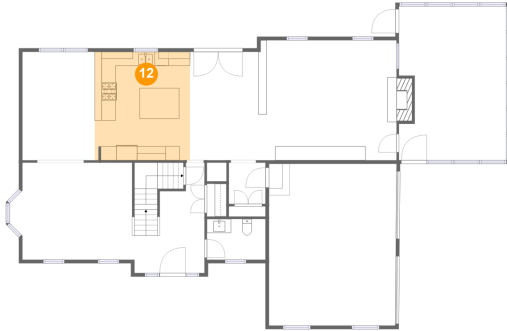


Dimensions: 19'8" x 17'1"
Area: 350 sq. ft
Counted as living area: Yes

Heated: Yes
Finished: Yes
Enclosed: Yes
Contiguous: Yes
Permitted: Yes
Wet space: No
Addition: No
Conversion: No

36823 Shoemaker School Rd, Purcellville, VA, US

12 Floor 2 - Kitchen



Dimensions: 13'7" x 15'5"
Area: 209 sq. ft
Counted as living area: Yes

Heated: Yes
Finished: Yes
Enclosed: Yes
Contiguous: Yes
Permitted: Yes
Wet space: No
Addition: No
Conversion: No

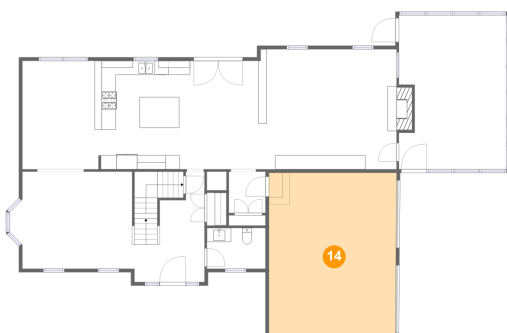
13 Floor 2 - Family Room



Dimensions: 10'4" x 15'5"
Area: 160 sq. ft
Counted as living area: Yes

Heated: Yes
Finished: Yes
Enclosed: Yes
Contiguous: Yes
Permitted: Yes
Wet space: No
Addition: No
Conversion: No

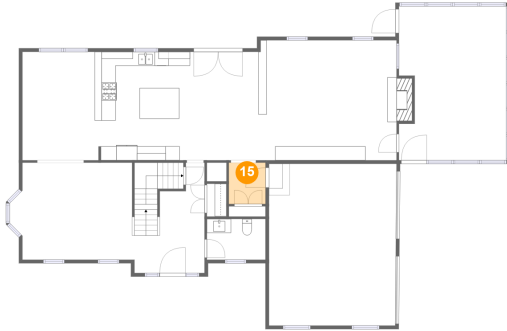
14 Floor 2 - Garage



Dimensions: 18'2" x 23'1"
Area: 417 sq. ft
Counted as living area: No

Heated: No
Finished: No
Enclosed: Yes
Contiguous: Yes
Permitted: Yes
Wet space: No
Addition: No
Conversion: No

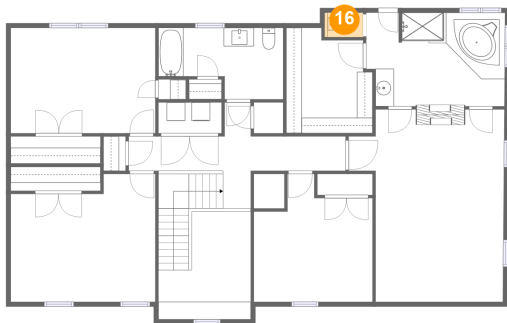
15 Floor 2 - Hall



Dimensions: 5'3" x 5'11"
Area: 31 sq. ft
Counted as living area: Yes

Heated: Yes
Finished: Yes
Enclosed: Yes
Contiguous: Yes
Permitted: Yes
Wet space: No
Addition: No
Conversion: No

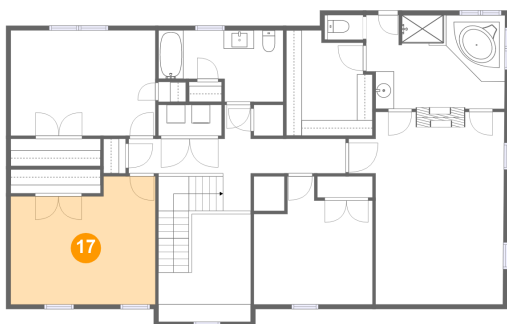
16 Floor 3 - WC



Dimensions: 3'10" x 2'8"
Area: 11 sq. ft
Counted as living area: Yes

Heated: Yes
Finished: Yes
Enclosed: Yes
Contiguous: Yes
Permitted: Yes
Wet space: No
Addition: No
Conversion: No

17 Floor 3 - Bedroom

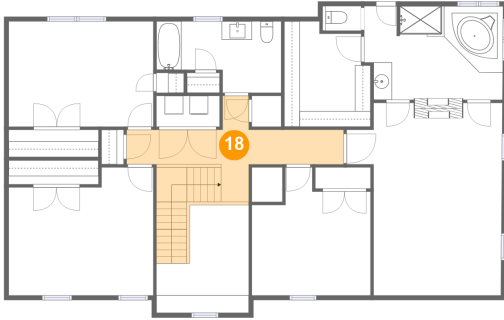


Dimensions: 15'7" x 13'10"
Area: 195 sq. ft
Counted as living area: Yes

Heated: Yes
Finished: Yes
Enclosed: Yes
Contiguous: Yes
Permitted: Yes
Wet space: No
Addition: No
Conversion: No

36823 Shoemaker School Rd, Purcellville, VA, US

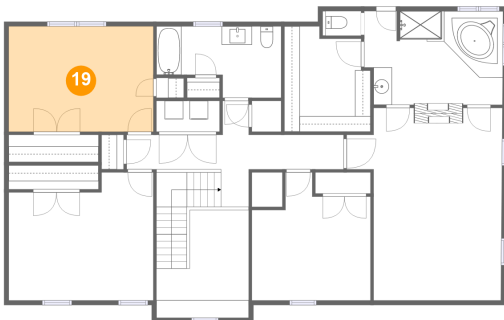
18 Floor 3 - Hall



Dimensions: 23'6" x 11'6"
Area: 165 sq. ft
Counted as living area: Yes

Heated: Yes
Finished: Yes
Enclosed: Yes
Contiguous: Yes
Permitted: Yes
Wet space: No
Addition: No
Conversion: No

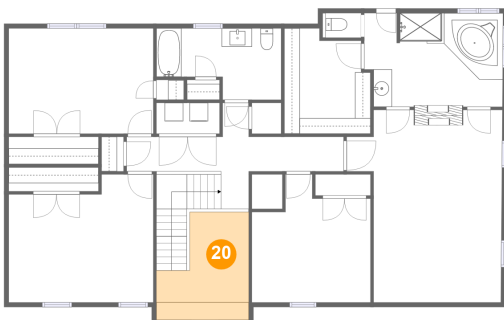
19 Floor 3 - Bedroom



Dimensions: 15'8" x 11'5"
Area: 178 sq. ft
Counted as living area: Yes

Heated: Yes
Finished: Yes
Enclosed: Yes
Contiguous: Yes
Permitted: Yes
Wet space: No
Addition: No
Conversion: No

20 Floor 3 - Open To Below

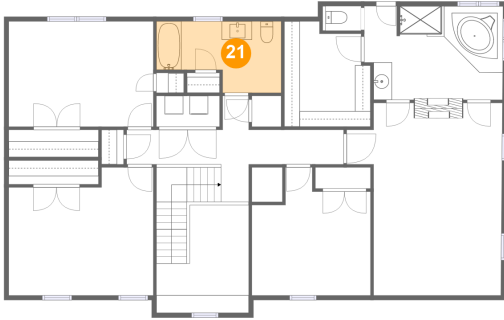


Dimensions: 10'0" x 9'9"
Area: 94 sq. ft
Counted as living area: No

Heated: No
Finished: No
Enclosed: No
Contiguous: Yes
Permitted: No
Wet space: No
Addition: No
Conversion: No

36823 Shoemaker School Rd, Purcellville, VA, US

21 Floor 3 - Bath



Dimensions: 13'6" x 7'8"
Area: 86 sq. ft
Counted as living area: Yes

Heated: Yes
Finished: Yes
Enclosed: Yes
Contiguous: Yes
Permitted: Yes
Wet space: Yes
Addition: No
Conversion: No

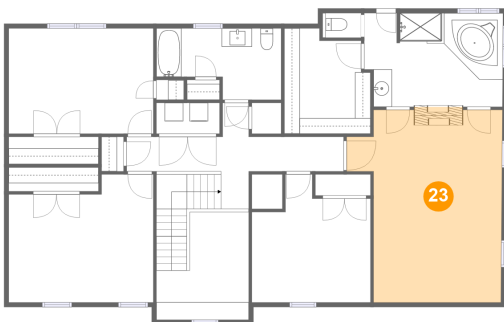
22 Floor 3 - Primary Bath



Dimensions: 15'0" x 10'2"
Area: 147 sq. ft
Counted as living area: Yes

Heated: Yes
Finished: Yes
Enclosed: Yes
Contiguous: Yes
Permitted: Yes
Wet space: Yes
Addition: No
Conversion: No

23 Floor 3 - Primary Bedroom

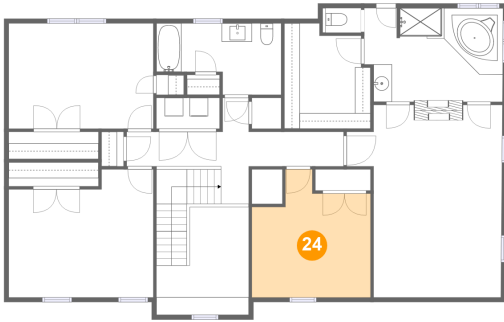


Dimensions: 16'9" x 20'9"
Area: 301 sq. ft
Counted as living area: Yes

Heated: Yes
Finished: Yes
Enclosed: Yes
Contiguous: Yes
Permitted: Yes
Wet space: No
Addition: No
Conversion: No

36823 Shoemaker School Rd, Purcellville, VA, US

24 Floor 3 - Bedroom



Dimensions: 12'10" x 13'10"
Area: 146 sq. ft
Counted as living area: Yes

Heated: Yes
Finished: Yes
Enclosed: Yes
Contiguous: Yes
Permitted: Yes
Wet space: No
Addition: No
Conversion: No

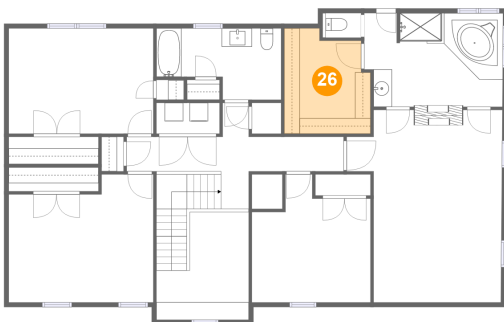
25 Floor 3 - W.I.C.



Dimensions: 9'9" x 2'11"
Area: 29 sq. ft
Counted as living area: Yes

Heated: Yes
Finished: Yes
Enclosed: Yes
Contiguous: Yes
Permitted: Yes
Wet space: No
Addition: No
Conversion: No

26 Floor 3 - W.I.C.



Dimensions: 9'4" x 11'4"
Area: 95 sq. ft
Counted as living area: Yes

Heated: Yes
Finished: Yes
Enclosed: Yes
Contiguous: Yes
Permitted: Yes
Wet space: No
Addition: No
Conversion: No