


972 Harbor Isle Boulevard, Klamath Falls, Oregon 97601, United States



Property summary


 **1** Garages

 **3** Bedrooms

 **2** Bathrooms

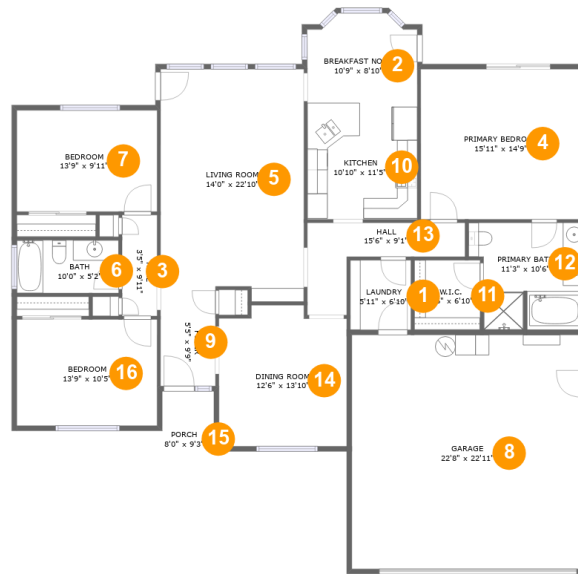
 **0** Half baths

 **1** Floors

 **1,822**
Gross living
area sqft

 **2,431**
Total sqft

972 Harbor Isle Boulevard, Klamath Falls, Oregon
97601, United States



Room dimensions

Floor 1

Total sqft: 2431

Living area: 1822

#		Dimensions	sqft	Counted as living area
1	Laundry	5'11" x 6'10"	41 sq. ft	Yes
2	Breakfast Nook	10'9" x 8'10"	88 sq. ft	Yes
3	Hall	3'5" x 9'11"	34 sq. ft	Yes
4	Primary Bedroom	15'11" x 14'9"	235 sq. ft	Yes
5	Living Room	14'0" x 22'10"	307 sq. ft	Yes
6	Bath	10'0" x 5'2"	52 sq. ft	Yes
7	Bedroom	13'9" x 9'11"	137 sq. ft	Yes
8	Garage	22'8" x 22'11"	520 sq. ft	No
9	Foyer	5'5" x 9'9"	53 sq. ft	Yes
10	Kitchen	10'10" x 11'5"	123 sq. ft	Yes
11	W.I.C.	6'6" x 6'10"	44 sq. ft	Yes

**972 Harbor Isle Boulevard, Klamath Falls, Oregon
97601, United States**

#		Dimensions	sqft	Counted as living area
12	Primary Bath	11'3" x 10'6"	106 sq. ft	Yes
13	Hall	15'6" x 9'1"	74 sq. ft	Yes
14	Dining Room	12'6" x 13'10"	164 sq. ft	Yes
15	Porch	8'0" x 9'3"	60 sq. ft	No
16	Bedroom	13'9" x 10'5"	143 sq. ft	Yes

972 Harbor Isle Boulevard, Klamath Falls, Oregon
97601, United States

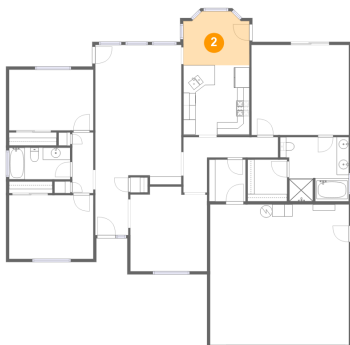
1 Floor 1 - Laundry



Dimensions: 5'11" x 6'10"
Area: 41 sq. ft
Counted as living area: Yes

Heated: Yes
Finished: Yes
Enclosed: Yes
Contiguous: Yes
Permitted: Yes
Wet space: No
Addition: No
Conversion: No

2 Floor 1 - Breakfast Nook



Dimensions: 10'9" x 8'10"
Area: 88 sq. ft
Counted as living area: Yes

Heated: Yes
Finished: Yes
Enclosed: Yes
Contiguous: Yes
Permitted: Yes
Wet space: No
Addition: No
Conversion: No

972 Harbor Isle Boulevard, Klamath Falls, Oregon
97601, United States

3 Floor 1 - Hall



Dimensions: 3'5" x 9'11"
Area: 34 sq. ft
Counted as living area: Yes

Heated: Yes
Finished: Yes
Enclosed: Yes
Contiguous: Yes
Permitted: Yes
Wet space: No
Addition: No
Conversion: No

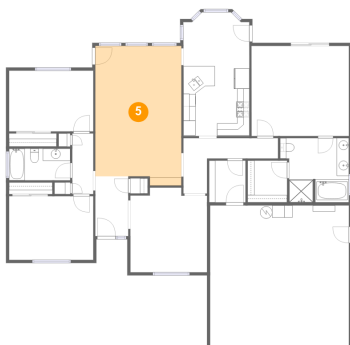
4 Floor 1 - Primary Bedroom



Dimensions: 15'11" x 14'9"
Area: 235 sq. ft
Counted as living area: Yes

Heated: Yes
Finished: Yes
Enclosed: Yes
Contiguous: Yes
Permitted: Yes
Wet space: No
Addition: No
Conversion: No

5 Floor 1 - Living Room



Dimensions: 14'0" x 22'10"
Area: 307 sq. ft
Counted as living area: Yes

Heated: Yes
Finished: Yes
Enclosed: Yes
Contiguous: Yes
Permitted: Yes
Wet space: No
Addition: No
Conversion: No

972 Harbor Isle Boulevard, Klamath Falls, Oregon
97601, United States

6 Floor 1 - Bath



Dimensions: 10'0" x 5'2"
Area: 52 sq. ft
Counted as living area: Yes

Heated: Yes
Finished: Yes
Enclosed: Yes
Contiguous: Yes
Permitted: Yes
Wet space: Yes
Addition: No
Conversion: No

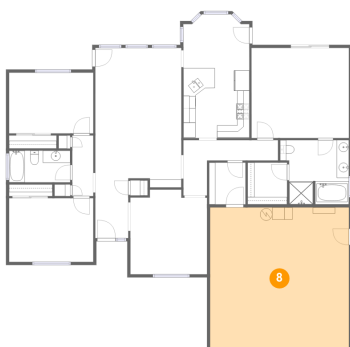
7 Floor 1 - Bedroom



Dimensions: 13'9" x 9'11"
Area: 137 sq. ft
Counted as living area: Yes

Heated: Yes
Finished: Yes
Enclosed: Yes
Contiguous: Yes
Permitted: Yes
Wet space: No
Addition: No
Conversion: No

8 Floor 1 - Garage



Dimensions: 22'8" x 22'11"
Area: 520 sq. ft
Counted as living area: No

Heated: No
Finished: No
Enclosed: Yes
Contiguous: Yes
Permitted: Yes
Wet space: No
Addition: No
Conversion: No

972 Harbor Isle Boulevard, Klamath Falls, Oregon
97601, United States

9 Floor 1 - Foyer



Dimensions: 5'5" x 9'9"
Area: 53 sq. ft
Counted as living area: Yes

Heated: Yes
Finished: Yes
Enclosed: Yes
Contiguous: Yes
Permitted: Yes
Wet space: No
Addition: No
Conversion: No

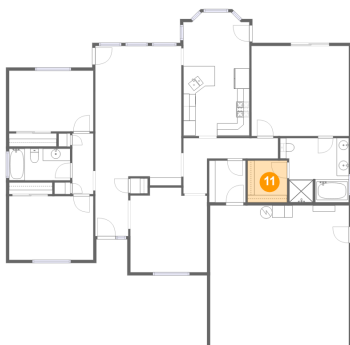
10 Floor 1 - Kitchen



Dimensions: 10'10" x 11'5"
Area: 123 sq. ft
Counted as living area: Yes

Heated: Yes
Finished: Yes
Enclosed: Yes
Contiguous: Yes
Permitted: Yes
Wet space: No
Addition: No
Conversion: No

11 Floor 1 - W.I.C.



Dimensions: 6'6" x 6'10"
Area: 44 sq. ft
Counted as living area: Yes

Heated: Yes
Finished: Yes
Enclosed: Yes
Contiguous: Yes
Permitted: Yes
Wet space: No
Addition: No
Conversion: No

972 Harbor Isle Boulevard, Klamath Falls, Oregon
97601, United States

12 Floor 1 - Primary Bath



Dimensions: 11'3" x 10'6"
Area: 106 sq. ft
Counted as living area: Yes

Heated: Yes
Finished: Yes
Enclosed: Yes
Contiguous: Yes
Permitted: Yes
Wet space: Yes
Addition: No
Conversion: No

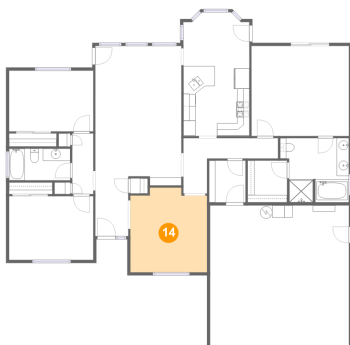
13 Floor 1 - Hall



Dimensions: 15'6" x 9'1"
Area: 74 sq. ft
Counted as living area: Yes

Heated: Yes
Finished: Yes
Enclosed: Yes
Contiguous: Yes
Permitted: Yes
Wet space: No
Addition: No
Conversion: No

14 Floor 1 - Dining Room



Dimensions: 12'6" x 13'10"
Area: 164 sq. ft
Counted as living area: Yes

Heated: Yes
Finished: Yes
Enclosed: Yes
Contiguous: Yes
Permitted: Yes
Wet space: No
Addition: No
Conversion: No

**972 Harbor Isle Boulevard, Klamath Falls, Oregon
97601, United States**

15 Floor 1 - Porch



Dimensions: 8'0" x 9'3"
Area: 60 sq. ft
Counted as living area: No

Heated: No
Finished: Yes
Enclosed: No
Contiguous: Yes
Permitted: Yes
Wet space: No
Addition: No
Conversion: No

16 Floor 1 - Bedroom



Dimensions: 13'9" x 10'5"
Area: 143 sq. ft
Counted as living area: Yes

Heated: Yes
Finished: Yes
Enclosed: Yes
Contiguous: Yes
Permitted: Yes
Wet space: No
Addition: No
Conversion: No