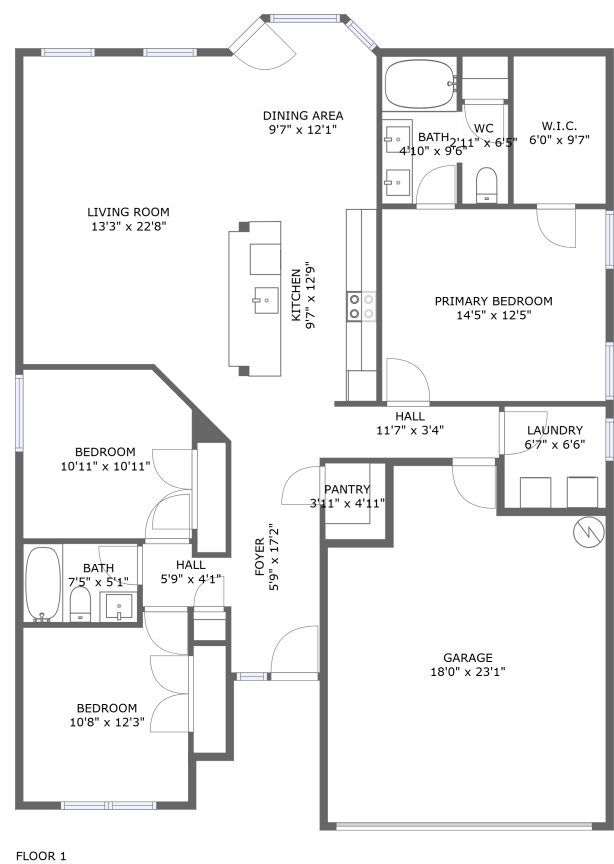


Home report

510 Roadrunner Avenue, New Braunfels, Guadalupe County,  
Texas, United States, 78130



**Total Area: 1404 sq. ft**

Floor 1: 1404 sq. ft

Excluded: Garage 369 sq. ft, Walls: 114 sq. ft

Property summary

 **1** Floors

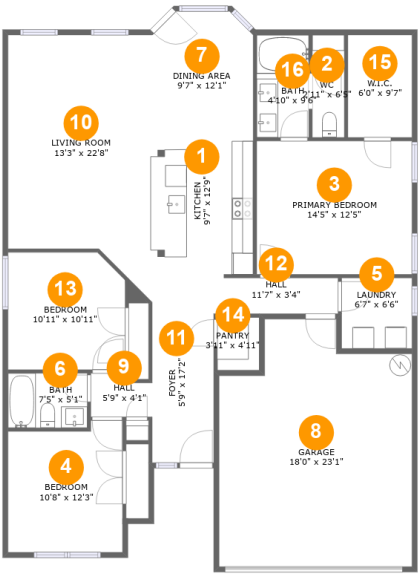
 **3** Bedrooms

 **2** Bathrooms

 **1** Garages

Home report

510 Roadrunner Avenue, New Braunfels, Guadalupe County,  
Texas, United States, 78130



Room dimensions

Floor 1 Total:1404sqft    Excluded: 369sqft

#		Max Dimensions	sqft	Included
1	Kitchen	9'7" x 12'9"	121 sq. ft	Yes
2	WC	2'11" x 6'5"	19 sq. ft	Yes
3	Primary Bedroom	14'5" x 12'5"	180 sq. ft	Yes
4	Bedroom	10'8" x 12'3"	123 sq. ft	Yes
5	Laundry	6'7" x 6'6"	43 sq. ft	Yes
6	Bath	7'5" x 5'1"	38 sq. ft	Yes
7	Dining Area	9'7" x 12'1"	110 sq. ft	Yes
8	Garage	18'0" x 23'1"	369 sq. ft	No
9	Hall	5'9" x 4'1"	21 sq. ft	Yes
10	Living Room	13'3" x 22'8"	274 sq. ft	Yes
11	Foyer	5'9" x 17'2"	101 sq. ft	Yes

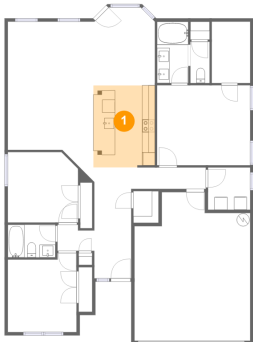
## Home report

**510 Roadrunner Avenue, New Braunfels, Guadalupe County,  
Texas, United States, 78130**

#		Max Dimensions	sqft	Included
12	Hall	11'7" x 3'4"	39 sq. ft	Yes
13	Bedroom	10'11" x 10'11"	116 sq. ft	Yes
14	Pantry	3'11" x 4'11"	19 sq. ft	Yes
15	W.I.C.	6'0" x 9'7"	57 sq. ft	Yes
16	Bath	4'10" x 9'6"	46 sq. ft	Yes

510 Roadrunner Avenue, New Braunfels, Guadalupe County,  
Texas, United States, 78130

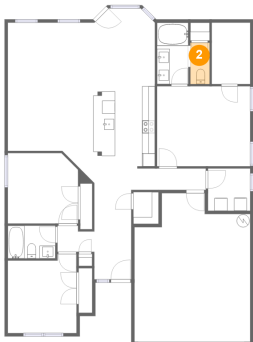
1 Floor 1 - Kitchen



Max Dimensions: 9'7" x  
12'9"  
Calculated Area: 121 sq. ft  
Included: Yes

Heated: Yes  
Finished: Yes  
Enclosed: Yes  
Contiguous:  
Yes  
Permitted: Yes  
Wet space: No  
Addition: No  
Conversion: No

2 Floor 1 - WC



Max Dimensions: 2'11" x  
6'5"  
Calculated Area: 19 sq. ft  
Included: Yes

Heated: Yes  
Finished: Yes  
Enclosed: Yes  
Contiguous:  
Yes  
Permitted: Yes  
Wet space: Yes  
Addition: No  
Conversion: No

510 Roadrunner Avenue, New Braunfels, Guadalupe County,  
Texas, United States, 78130

3 Floor 1 - Primary Bedroom



Max Dimensions: 14'5" x 12'5"  
Calculated Area: 180 sq. ft  
Included: Yes

Heated: Yes  
Finished: Yes  
Enclosed: Yes  
Contiguous: Yes  
Permitted: Yes  
Wet space: No  
Addition: No  
Conversion: No

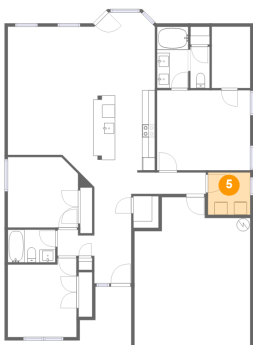
4 Floor 1 - Bedroom



Max Dimensions: 10'8" x 12'3"  
Calculated Area: 123 sq. ft  
Included: Yes

Heated: Yes  
Finished: Yes  
Enclosed: Yes  
Contiguous: Yes  
Permitted: Yes  
Wet space: No  
Addition: No  
Conversion: No

5 Floor 1 - Laundry

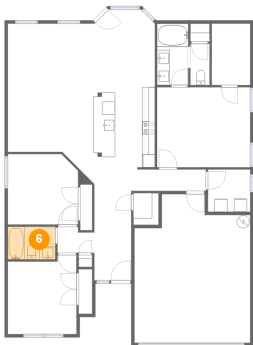


Max Dimensions: 6'7" x 6'6"  
Calculated Area: 43 sq. ft  
Included: Yes

Heated: Yes  
Finished: Yes  
Enclosed: Yes  
Contiguous: Yes  
Permitted: Yes  
Wet space: No  
Addition: No  
Conversion: No

510 Roadrunner Avenue, New Braunfels, Guadalupe County,  
Texas, United States, 78130

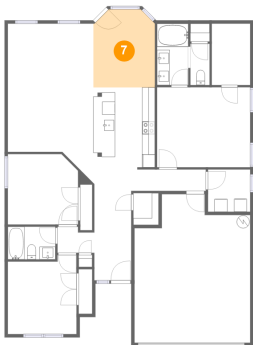
6 Floor 1 - Bath



Max Dimensions: 7'5" x 5'1"  
Calculated Area: 38 sq. ft  
Included: Yes

Heated: Yes  
Finished: Yes  
Enclosed: Yes  
Contiguous: Yes  
Permitted: Yes  
Wet space: Yes  
Addition: No  
Conversion: No

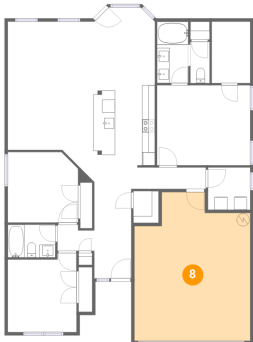
7 Floor 1 - Dining Area



Max Dimensions: 9'7" x 12'1"  
Calculated Area: 110 sq. ft  
Included: Yes

Heated: Yes  
Finished: Yes  
Enclosed: Yes  
Contiguous: Yes  
Permitted: Yes  
Wet space: No  
Addition: No  
Conversion: No

8 Floor 1 - Garage



Max Dimensions: 18'0" x 23'1"  
Calculated Area: 369 sq. ft  
Included: No

Heated: No  
Finished: No  
Enclosed: Yes  
Contiguous: Yes  
Permitted: Yes  
Wet space: No  
Addition: No  
Conversion: No

510 Roadrunner Avenue, New Braunfels, Guadalupe County,  
Texas, United States, 78130

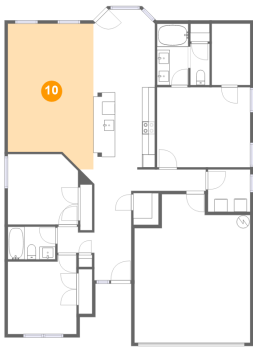
9 Floor 1 - Hall



Max Dimensions: 5'9" x 4'1"  
Calculated Area: 21 sq. ft  
Included: Yes

Heated: Yes  
Finished: Yes  
Enclosed: Yes  
Contiguous: Yes  
Permitted: Yes  
Wet space: No  
Addition: No  
Conversion: No

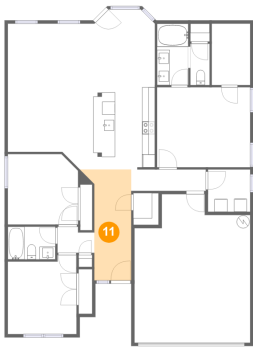
10 Floor 1 - Living Room



Max Dimensions: 13'3" x 22'8"  
Calculated Area: 274 sq. ft  
Included: Yes

Heated: Yes  
Finished: Yes  
Enclosed: Yes  
Contiguous: Yes  
Permitted: Yes  
Wet space: No  
Addition: No  
Conversion: No

11 Floor 1 - Foyer

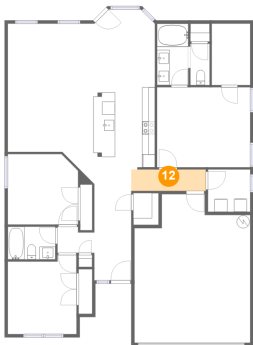


Max Dimensions: 5'9" x 17'2"  
Calculated Area: 101 sq. ft  
Included: Yes

Heated: Yes  
Finished: Yes  
Enclosed: Yes  
Contiguous: Yes  
Permitted: Yes  
Wet space: No  
Addition: No  
Conversion: No

510 Roadrunner Avenue, New Braunfels, Guadalupe County,  
Texas, United States, 78130

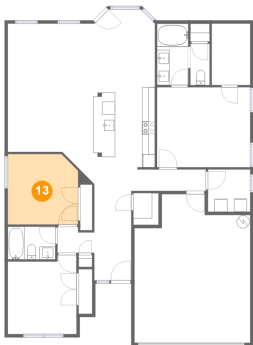
12 Floor 1 - Hall



Max Dimensions: 11'7" x 3'4"  
Calculated Area: 39 sq. ft  
Included: Yes

Heated: Yes  
Finished: Yes  
Enclosed: Yes  
Contiguous: Yes  
Permitted: Yes  
Wet space: No  
Addition: No  
Conversion: No

13 Floor 1 - Bedroom



Max Dimensions: 10'11" x 10'11"  
Calculated Area: 116 sq. ft  
Included: Yes

Heated: Yes  
Finished: Yes  
Enclosed: Yes  
Contiguous: Yes  
Permitted: Yes  
Wet space: No  
Addition: No  
Conversion: No

14 Floor 1 - Pantry



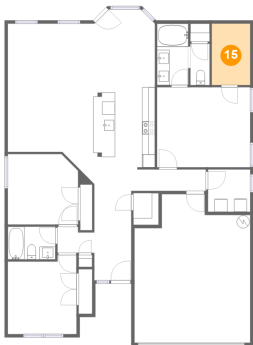
Max Dimensions: 3'11" x 4'11"  
Calculated Area: 19 sq. ft  
Included: Yes

Heated: Yes  
Finished: Yes  
Enclosed: Yes  
Contiguous: Yes  
Permitted: Yes  
Wet space: No  
Addition: No  
Conversion: No



510 Roadrunner Avenue, New Braunfels, Guadalupe County,  
Texas, United States, 78130

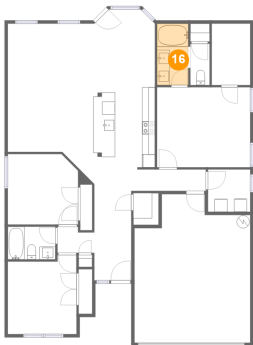
15 Floor 1 - W.I.C.



Max Dimensions: 6'0" x 9'7"  
Calculated Area: 57 sq. ft  
Included: Yes

Heated: Yes  
Finished: Yes  
Enclosed: Yes  
Contiguous: Yes  
Permitted: Yes  
Wet space: No  
Addition: No  
Conversion: No

16 Floor 1 - Bath



Max Dimensions: 4'10" x 9'6"  
Calculated Area: 46 sq. ft  
Included: Yes

Heated: Yes  
Finished: Yes  
Enclosed: Yes  
Contiguous: Yes  
Permitted: Yes  
Wet space: Yes  
Addition: No  
Conversion: No