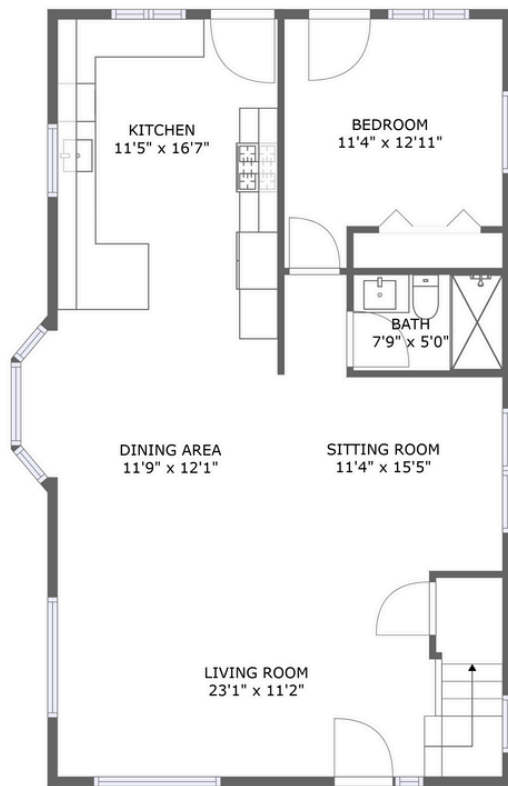


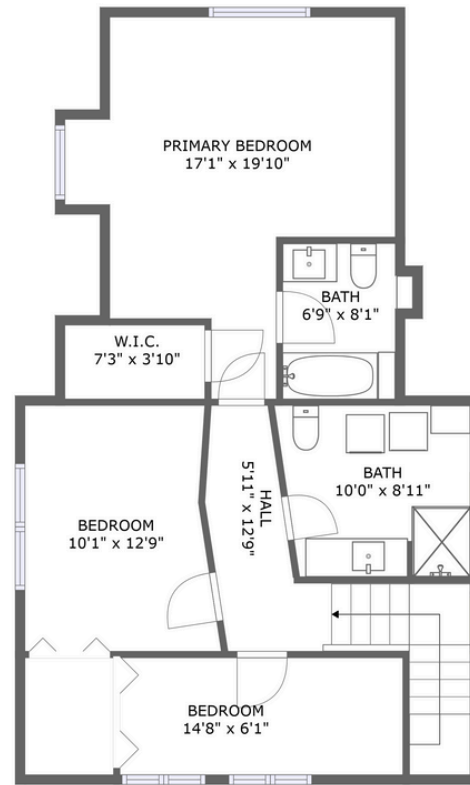
Home report

2212 North 65th Street, Green Lake, Seattle, King
County, Washington, United States, 98103

FOCUS 
MEDIA COLLECTIVE



FLOOR 1



FLOOR 2

Property summary



0
Garages



4
Bedrooms



3
Bathrooms



0
Half baths



2
Floors

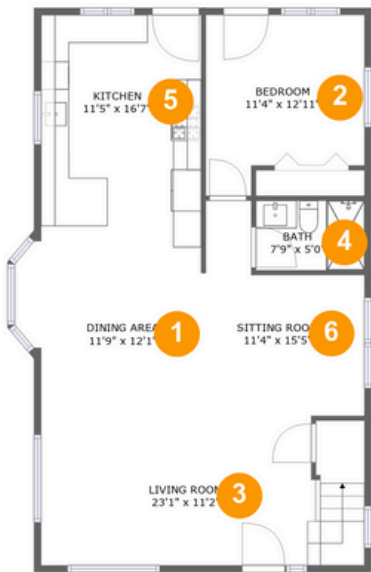


1,762
Gross living
area sqft



1,811
Total sqft

2212 North 65th Street, Green Lake, Seattle, King
County, Washington, United States, 98103



Room dimensions

Floor 1

Total sqft: 983 Living area: 970

#		Dimensions	sqft	Counted as living area
1	Dining Area	11'9" x 12'1"	141 sq. ft	Yes
2	Bedroom	11'4" x 12'11"	129 sq. ft	Yes
3	Living Room	23'1" x 11'2"	246 sq. ft	Yes
4	Bath	7'9" x 5'0"	39 sq. ft	Yes
5	Kitchen	11'5" x 16'7"	189 sq. ft	Yes
6	Sitting Room	11'4" x 15'5"	131 sq. ft	Yes

2212 North 65th Street, Green Lake, Seattle, King
County, Washington, United States, 98103



Room dimensions

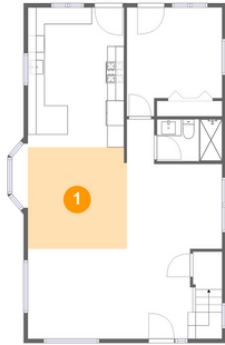
Floor 2

Total sqft: 828 Living area: 792

#		Dimensions	sqft	Counted as living area
7	Bedroom	10'1" x 12'9"	120 sq. ft	Yes
8	W.I.C.	7'3" x 3'10"	28 sq. ft	Yes
9	Bath	10'0" x 8'11"	77 sq. ft	Yes
10	Bath	6'9" x 8'1"	42 sq. ft	Yes
11	Hall	5'11" x 12'9"	100 sq. ft	Yes
12	Primary Bedroom	17'1" x 19'10"	230 sq. ft	Yes
13	Bedroom	14'8" x 6'1"	74 sq. ft	Yes

2212 North 65th Street, Green Lake, Seattle, King
County, Washington, United States, 98103

1 Floor 1 - Dining Area



Dimensions: 11'9" x 12'1"
Area: 141 sq. ft
Counted as living area: Yes

Heated: Yes
Finished: Yes
Enclosed: Yes
Contiguous: Yes
Permitted: Yes
Wet space: No
Addition: No
Conversion: No

2 Floor 1 - Bedroom

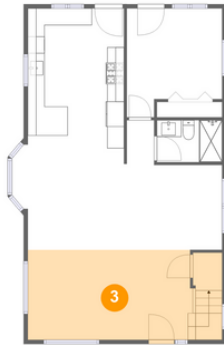


Dimensions: 11'4" x 12'11"
Area: 129 sq. ft
Counted as living area: Yes

Heated: Yes
Finished: Yes
Enclosed: Yes
Contiguous: Yes
Permitted: Yes
Wet space: No
Addition: No
Conversion: No

2212 North 65th Street, Green Lake, Seattle, King
County, Washington, United States, 98103

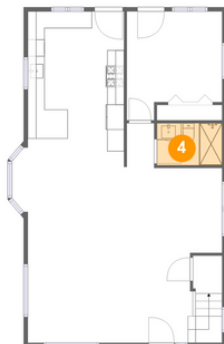
3 Floor 1 - Living Room



Dimensions: 23'1" x 11'2"
Area: 246 sq. ft
Counted as living area: Yes

Heated: Yes
Finished: Yes
Enclosed: Yes
Contiguous: Yes
Permitted: Yes
Wet space: No
Addition: No
Conversion: No

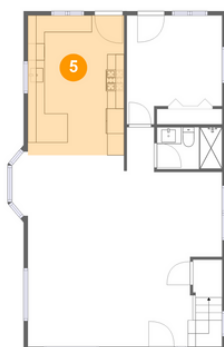
4 Floor 1 - Bath



Dimensions: 7'9" x 5'0"
Area: 39 sq. ft
Counted as living area: Yes

Heated: Yes
Finished: Yes
Enclosed: Yes
Contiguous: Yes
Permitted: Yes
Wet space: Yes
Addition: No
Conversion: No

5 Floor 1 - Kitchen



Dimensions: 11'5" x 16'7"
Area: 189 sq. ft
Counted as living area: Yes

Heated: Yes
Finished: Yes
Enclosed: Yes
Contiguous: Yes
Permitted: Yes
Wet space: No
Addition: No
Conversion: No

2212 North 65th Street, Green Lake, Seattle, King
County, Washington, United States, 98103

6 Floor 1 - Sitting Room



Dimensions: 11'4" x 15'5"
Area: 131 sq. ft
Counted as living area: Yes

Heated: Yes
Finished: Yes
Enclosed: Yes
Contiguous: Yes
Permitted: Yes
Wet space: No
Addition: No
Conversion: No

7 Floor 2 - Bedroom



Dimensions: 10'1" x 12'9"
Area: 120 sq. ft
Counted as living area: Yes

Heated: Yes
Finished: Yes
Enclosed: Yes
Contiguous: Yes
Permitted: Yes
Wet space: No
Addition: No
Conversion: No

8 Floor 2 - W.I.C.



Dimensions: 7'3" x 3'10"
Area: 28 sq. ft
Counted as living area: Yes

Heated: Yes
Finished: Yes
Enclosed: Yes
Contiguous: Yes
Permitted: Yes
Wet space: No
Addition: No
Conversion: No

2212 North 65th Street, Green Lake, Seattle, King
County, Washington, United States, 98103

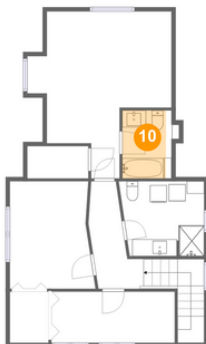
9 Floor 2 - Bath



Dimensions: 10'0" x 8'11"
Area: 77 sq. ft
Counted as living area: Yes

Heated: Yes
Finished: Yes
Enclosed: Yes
Contiguous: Yes
Permitted: Yes
Wet space: Yes
Addition: No
Conversion: No

10 Floor 2 - Bath



Dimensions: 6'9" x 8'1"
Area: 42 sq. ft
Counted as living area: Yes

Heated: Yes
Finished: Yes
Enclosed: Yes
Contiguous: Yes
Permitted: Yes
Wet space: Yes
Addition: No
Conversion: No

11 Floor 2 - Hall



Dimensions: 5'11" x 12'9"
Area: 100 sq. ft
Counted as living area: Yes

Heated: Yes
Finished: Yes
Enclosed: Yes
Contiguous: Yes
Permitted: Yes
Wet space: No
Addition: No
Conversion: No

2212 North 65th Street, Green Lake, Seattle, King
County, Washington, United States, 98103

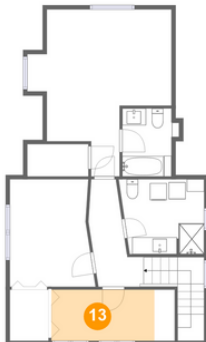
12 Floor 2 - Primary Bedroom



Dimensions: 17'1" x 19'10"
Area: 230 sq. ft
Counted as living area: Yes

Heated: Yes
Finished: Yes
Enclosed: Yes
Contiguous: Yes
Permitted: Yes
Wet space: No
Addition: No
Conversion: No

13 Floor 2 - Bedroom



Dimensions: 14'8" x 6'1"
Area: 74 sq. ft
Counted as living area: Yes

Heated: Yes
Finished: Yes
Enclosed: Yes
Contiguous: Yes
Permitted: Yes
Wet space: No
Addition: No
Conversion: No