


# 95 Indian Point Drive, Westlake Corner, Hardy, Franklin County, Virginia, United States, 24101

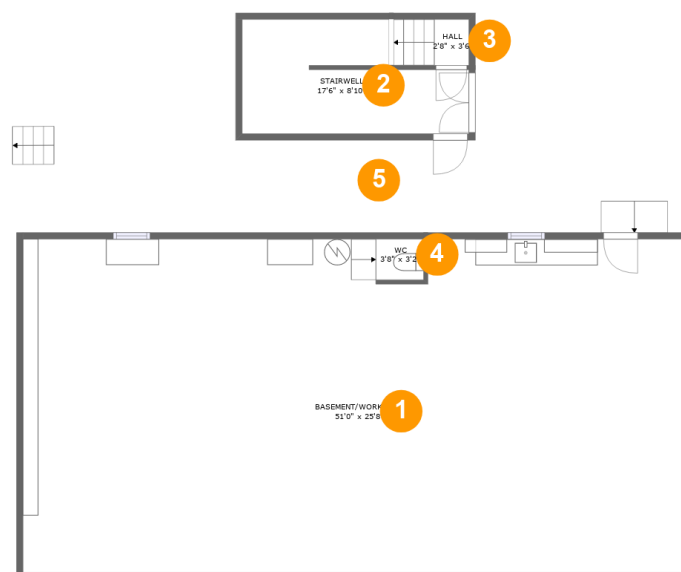


## Property summary

 **2** Garages       **3** Bedrooms       **2** Bathrooms       **0** Half baths

 **2** Floors       **1,794** Gross living area sqft       **5,326** Total sqft

# 95 Indian Point Drive, Westlake Corner, Hardy, Franklin County, Virginia, United States, 24101



## Room dimensions

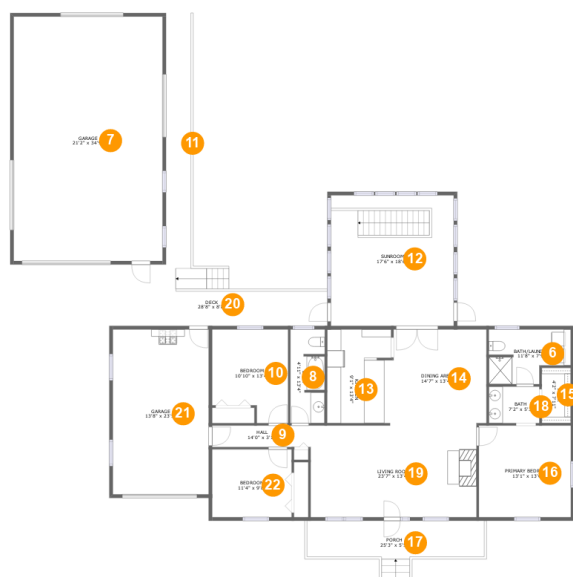
Floor 1

Total sqft: 1967

Living area: 0

#		Dimensions	sqft	Counted as living area
1	BASEMENT/ WORKSHOP	51'0" x 25'8"	1298 sq. ft	No
2	Stairwell	17'6" x 8'10"	128 sq. ft	No
3	Hall	2'8" x 3'6"	21 sq. ft	No
4	Bath	3'8" x 3'2"	12 sq. ft	No
5	Driveway	49'3" x 10'3"	395 sq. ft	No

# 95 Indian Point Drive, Westlake Corner, Hardy, Franklin County, Virginia, United States, 24101



## Room dimensions

Floor 2

Total sqft: 3359 Living area: 1794

#		Dimensions	sqft	Counted as living area
6	BATH/LAUNDRY	11'8" x 7'9"	78 sq. ft	Yes
7	Garage	21'2" x 34'9"	737 sq. ft	No
8	Bath	4'11" x 13'4"	63 sq. ft	Yes
9	Hall	14'0" x 3'1"	44 sq. ft	Yes
10	Bedroom	10'10" x 13'4"	128 sq. ft	Yes
11	Driveway	3'6" x 36'4"	127 sq. ft	No
12	Room	17'6" x 18'6"	325 sq. ft	Yes
13	Kitchen	9'1" x 13'4"	112 sq. ft	Yes
14	Dining Room	14'7" x 13'4"	188 sq. ft	Yes
15	Cl	4'2" x 7'11"	33 sq. ft	Yes
16	Bedroom	13'1" x 13'0"	171 sq. ft	Yes

Scan captured on Mon, 25 Nov 2024 20:44:49 GMT

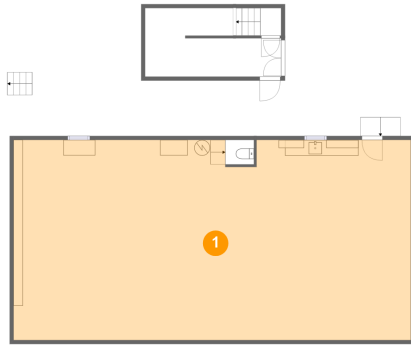
Information is calculated by Cubicasa technology deemed highly reliable but not guaranteed.

**95 Indian Point Drive, Westlake Corner, Hardy,  
Franklin County, Virginia, United States, 24101**

#		Dimensions	sqft	Counted as living area
17	Outdoor	25'3" x 5'5"	131 sq. ft	No
18	Bath	7'2" x 5'3"	38 sq. ft	Yes
19	Living Room	23'7" x 13'4"	312 sq. ft	Yes
20	Outdoor	28'8" x 8'8"	168 sq. ft	No
21	Garage	13'8" x 23'5"	320 sq. ft	No
22	Bedroom	11'4" x 9'8"	109 sq. ft	Yes

# 95 Indian Point Drive, Westlake Corner, Hardy, Franklin County, Virginia, United States, 24101

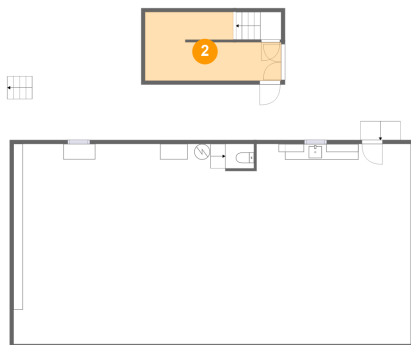
## 1 Floor 1 - BASEMENT/WORKSHOP



Dimensions: 51'0" x 25'8"  
Area: 1298 sq. ft  
Counted as living area: No

Heated: No  
Finished: No  
Enclosed: Yes  
Contiguous: Yes  
Permitted: Yes  
Wet space: No  
Addition: No  
Conversion: No

## 2 Floor 1 - Stairwell

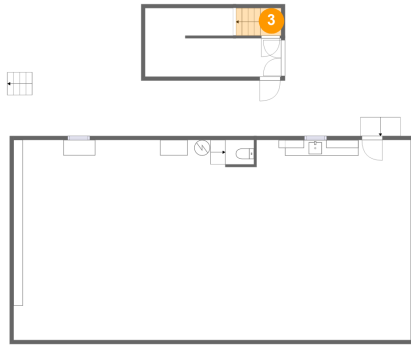


Dimensions: 17'6" x 8'10"  
Area: 128 sq. ft  
Counted as living area: No

Heated: No  
Finished: No  
Enclosed: No  
Contiguous: No  
Permitted: No  
Wet space: No  
Addition: No  
Conversion: No

# 95 Indian Point Drive, Westlake Corner, Hardy, Franklin County, Virginia, United States, 24101

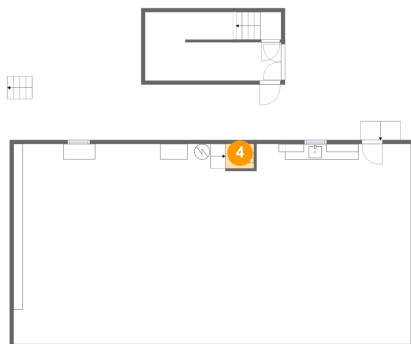
## 3 Floor 1 - Hall



Dimensions: 2'8" x 3'6"  
Area: 21 sq. ft  
Counted as living area: No

Heated: Yes  
Finished: Yes  
Enclosed: Yes  
Contiguous: No  
Permitted: Yes  
Wet space: No  
Addition: No  
Conversion: No

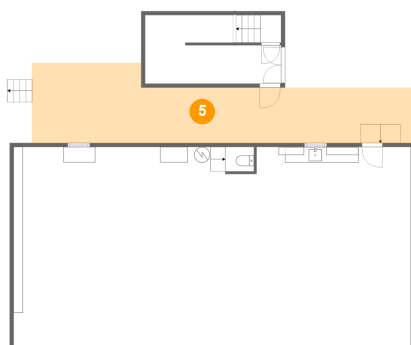
## 4 Floor 1 - Bath



Dimensions: 3'8" x 3'2"  
Area: 12 sq. ft  
Counted as living area: No

Heated: Yes  
Finished: No  
Enclosed: Yes  
Contiguous: Yes  
Permitted: Yes  
Wet space: Yes  
Addition: No  
Conversion: No

## 5 Floor 1 - Driveway



Dimensions: 49'3" x 10'3"  
Area: 395 sq. ft  
Counted as living area: No

Heated: Yes  
Finished: Yes  
Enclosed: Yes  
Contiguous: No  
Permitted: Yes  
Wet space: No  
Addition: No  
Conversion: No

# 95 Indian Point Drive, Westlake Corner, Hardy, Franklin County, Virginia, United States, 24101

## 6 Floor 2 - BATH/LAUNDRY



Dimensions: 11'8" x 7'9"  
Area: 78 sq. ft  
Counted as living area: Yes

Heated: Yes  
Finished: Yes  
Enclosed: Yes  
Contiguous: Yes  
Permitted: Yes  
Wet space: Yes  
Addition: No  
Conversion: No

## 7 Floor 2 - Garage



Dimensions: 21'2" x 34'9"  
Area: 737 sq. ft  
Counted as living area: No

Heated: No  
Finished: No  
Enclosed: Yes  
Contiguous: Yes  
Permitted: Yes  
Wet space: No  
Addition: No  
Conversion: No

## 8 Floor 2 - Bath



Dimensions: 4'11" x 13'4"  
Area: 63 sq. ft  
Counted as living area: Yes

Heated: Yes  
Finished: Yes  
Enclosed: Yes  
Contiguous: Yes  
Permitted: Yes  
Wet space: Yes  
Addition: No  
Conversion: No

# 95 Indian Point Drive, Westlake Corner, Hardy, Franklin County, Virginia, United States, 24101

## 9 Floor 2 - Hall



Dimensions: 14'0" x 3'1"  
Area: 44 sq. ft  
Counted as living area: Yes

Heated: Yes  
Finished: Yes  
Enclosed: Yes  
Contiguous: Yes  
Permitted: Yes  
Wet space: No  
Addition: No  
Conversion: No

## 10 Floor 2 - Bedroom



Dimensions: 10'10" x 13'4"  
Area: 128 sq. ft  
Counted as living area: Yes

Heated: Yes  
Finished: Yes  
Enclosed: Yes  
Contiguous: Yes  
Permitted: Yes  
Wet space: No  
Addition: No  
Conversion: No

## 11 Floor 2 - Driveway



Dimensions: 3'6" x 36'4"  
Area: 127 sq. ft  
Counted as living area: No

Heated: Yes  
Finished: Yes  
Enclosed: Yes  
Contiguous: No  
Permitted: Yes  
Wet space: No  
Addition: No  
Conversion: No



# 95 Indian Point Drive, Westlake Corner, Hardy, Franklin County, Virginia, United States, 24101

## 12 Floor 2 - Room



Dimensions: 17'6" x 18'6"  
Area: 325 sq. ft  
Counted as living area: Yes

Heated: Yes  
Finished: Yes  
Enclosed: Yes  
Contiguous: Yes  
Permitted: Yes  
Wet space: No  
Addition: No  
Conversion: No

## 13 Floor 2 - Kitchen



Dimensions: 9'1" x 13'4"  
Area: 112 sq. ft  
Counted as living area: Yes

Heated: Yes  
Finished: Yes  
Enclosed: Yes  
Contiguous: Yes  
Permitted: Yes  
Wet space: No  
Addition: No  
Conversion: No

## 14 Floor 2 - Dining Room



Dimensions: 14'7" x 13'4"  
Area: 188 sq. ft  
Counted as living area: Yes

Heated: Yes  
Finished: Yes  
Enclosed: Yes  
Contiguous: Yes  
Permitted: Yes  
Wet space: No  
Addition: No  
Conversion: No

**95 Indian Point Drive, Westlake Corner, Hardy,  
Franklin County, Virginia, United States, 24101**

**15 Floor 2 - Cl**



Dimensions: 4'2" x 7'11"  
Area: 33 sq. ft  
Counted as living area: Yes

Heated: Yes  
Finished: Yes  
Enclosed: Yes  
Contiguous: Yes  
Permitted: Yes  
Wet space: No  
Addition: No  
Conversion: No

**16 Floor 2 - Bedroom**



Dimensions: 13'1" x 13'0"  
Area: 171 sq. ft  
Counted as living area: Yes

Heated: Yes  
Finished: Yes  
Enclosed: Yes  
Contiguous: Yes  
Permitted: Yes  
Wet space: No  
Addition: No  
Conversion: No

**17 Floor 2 - Outdoor**



Dimensions: 25'3" x 5'5"  
Area: 131 sq. ft  
Counted as living area: No

Heated: No  
Finished: Yes  
Enclosed: No  
Contiguous: Yes  
Permitted: Yes  
Wet space: No  
Addition: No  
Conversion: No

**95 Indian Point Drive, Westlake Corner, Hardy,  
Franklin County, Virginia, United States, 24101**

**18 Floor 2 - Bath**



**Dimensions:** 7'2" x 5'3"  
**Area:** 38 sq. ft  
**Counted as living area:** Yes

**Heated:** Yes  
**Finished:** Yes  
**Enclosed:** Yes  
**Contiguous:** Yes  
**Permitted:** Yes  
**Wet space:** Yes  
**Addition:** No  
**Conversion:** No

**19 Floor 2 - Living Room**



**Dimensions:** 23'7" x 13'4"  
**Area:** 312 sq. ft  
**Counted as living area:** Yes

**Heated:** Yes  
**Finished:** Yes  
**Enclosed:** Yes  
**Contiguous:** Yes  
**Permitted:** Yes  
**Wet space:** No  
**Addition:** No  
**Conversion:** No

**20 Floor 2 - Outdoor**



**Dimensions:** 28'8" x 8'8"  
**Area:** 168 sq. ft  
**Counted as living area:** No

**Heated:** No  
**Finished:** Yes  
**Enclosed:** No  
**Contiguous:** Yes  
**Permitted:** Yes  
**Wet space:** No  
**Addition:** No  
**Conversion:** No

**95 Indian Point Drive, Westlake Corner, Hardy,  
Franklin County, Virginia, United States, 24101**

**21 Floor 2 - Garage**



**Dimensions:** 13'8" x 23'5"  
**Area:** 320 sq. ft  
**Counted as living area:** No

**Heated:** No  
**Finished:** No  
**Enclosed:** Yes  
**Contiguous:** Yes  
**Permitted:** Yes  
**Wet space:** No  
**Addition:** No  
**Conversion:** No

**22 Floor 2 - Bedroom**



**Dimensions:** 11'4" x 9'8"  
**Area:** 109 sq. ft  
**Counted as living area:** Yes

**Heated:** Yes  
**Finished:** Yes  
**Enclosed:** Yes  
**Contiguous:** Yes  
**Permitted:** Yes  
**Wet space:** No  
**Addition:** No  
**Conversion:** No