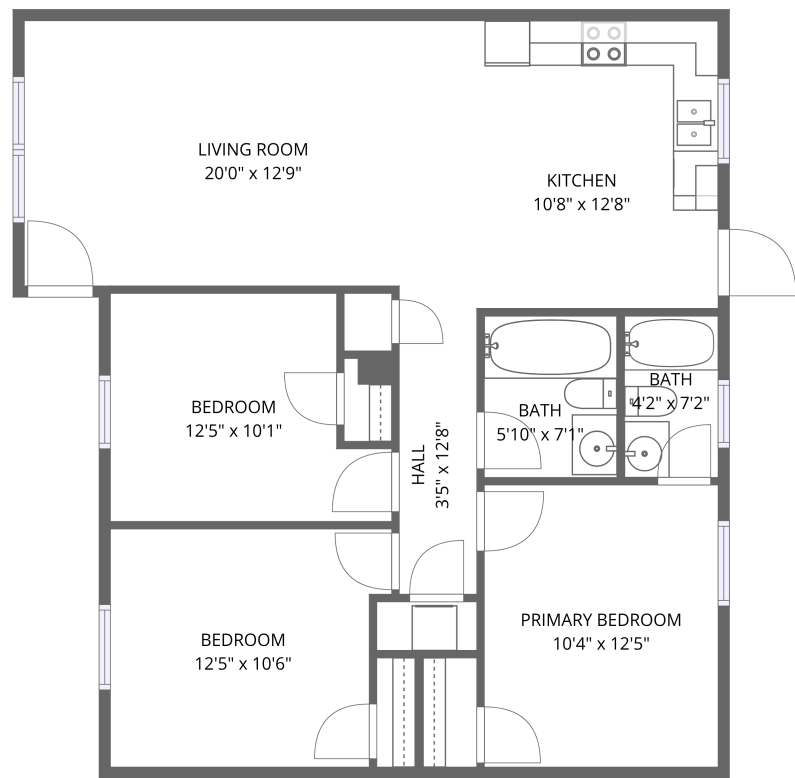


Home data report

67 Idyllwood Dr, Inwood, WV, US




1st floor

Total Area: 931 sq. ft

1st Floor: 931 sq. ft

Excluded: Walls: 65 sq. ft

Property summary

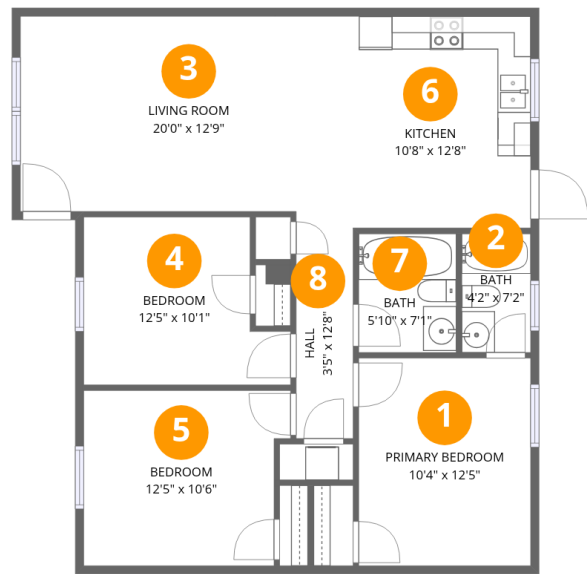
 **1** Floors

 **3** Bedrooms

 **2** Bathrooms

Home data report

67 Idyllwood Dr,Inwood,WV,US



Room dimensions

Floor 1 Total:931sqft Excluded: 0sqft

#		Dimensions	sqft	Counted as living area
1	Primary Bedroom	10'4" x 12'5"	129 sq. ft	Yes
2	Bath	4'2" x 7'2"	30 sq. ft	Yes
3	Living Room	20'0" x 12'9"	254 sq. ft	Yes
4	Bedroom	12'5" x 10'1"	125 sq. ft	Yes
5	Bedroom	12'5" x 10'6"	131 sq. ft	Yes
6	Kitchen	10'8" x 12'8"	135 sq. ft	Yes
7	Bath	5'10" x 7'1"	42 sq. ft	Yes
8	Hall	3'5" x 12'8"	43 sq. ft	Yes

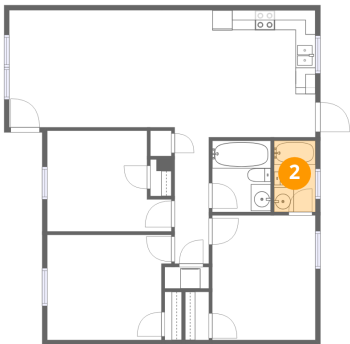
1 Floor 1 - Primary Bedroom



Dimensions: 10'4" x 12'5"
Area: 129 sq. ft
Counted as living area: Yes

Heated: Yes
Finished: Yes
Enclosed: Yes
Contiguous: Yes
Permitted: Yes
Wet space: No
Addition: No
Conversion: No

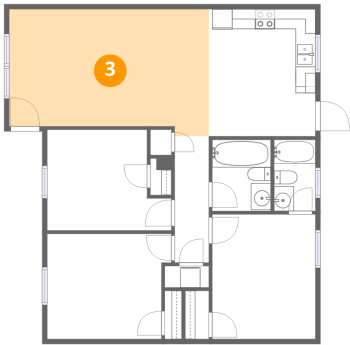
2 Floor 1 - Bath



Dimensions: 4'2" x 7'2"
Area: 30 sq. ft
Counted as living area: Yes

Heated: Yes
Finished: Yes
Enclosed: Yes
Contiguous: Yes
Permitted: Yes
Wet space: Yes
Addition: No
Conversion: No

3 Floor 1 - Living Room



Dimensions: 20'0" x 12'9"
Area: 254 sq. ft
Counted as living area: Yes

Heated: Yes
Finished: Yes
Enclosed: Yes
Contiguous: Yes
Permitted: Yes
Wet space: No
Addition: No
Conversion: No

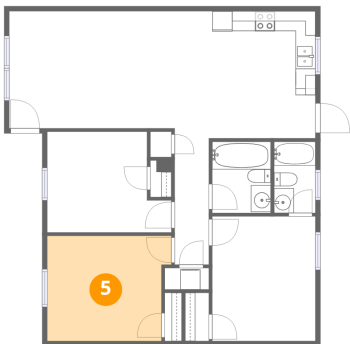
4 Floor 1 - Bedroom



Dimensions: 12'5" x 10'1"
Area: 125 sq. ft
Counted as living area: Yes

Heated: Yes
Finished: Yes
Enclosed: Yes
Contiguous: Yes
Permitted: Yes
Wet space: No
Addition: No
Conversion: No

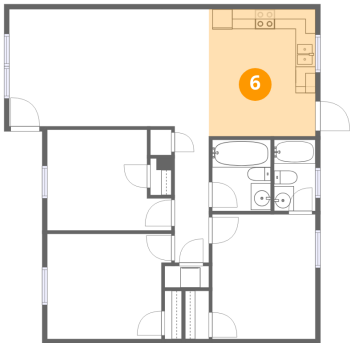
5 Floor 1 - Bedroom



Dimensions: 12'5" x 10'6"
Area: 131 sq. ft
Counted as living area: Yes

Heated: Yes
Finished: Yes
Enclosed: Yes
Contiguous: Yes
Permitted: Yes
Wet space: No
Addition: No
Conversion: No

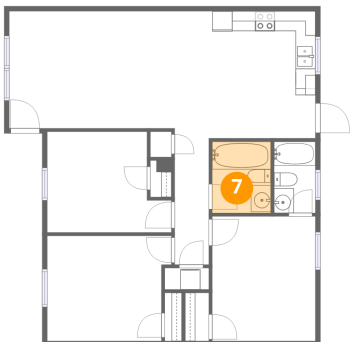
6 Floor 1 - Kitchen



Dimensions: 10'8" x 12'8"
Area: 135 sq. ft
Counted as living area: Yes

Heated: Yes
Finished: Yes
Enclosed: Yes
Contiguous: Yes
Permitted: Yes
Wet space: No
Addition: No
Conversion: No

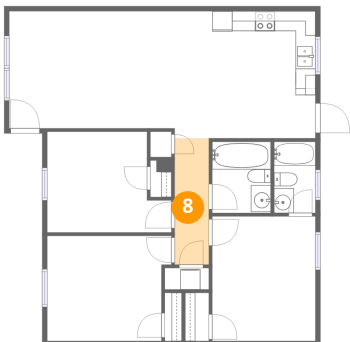
7 Floor 1 - Bath



Dimensions: 5'10" x 7'1"
Area: 42 sq. ft
Counted as living area: Yes

Heated: Yes
Finished: Yes
Enclosed: Yes
Contiguous: Yes
Permitted: Yes
Wet space: Yes
Addition: No
Conversion: No

8 Floor 1 - Hall



Dimensions: 3'5" x 12'8"
Area: 43 sq. ft
Counted as living area: Yes

Heated: Yes
Finished: Yes
Enclosed: Yes
Contiguous: Yes
Permitted: Yes
Wet space: No
Addition: No
Conversion: No