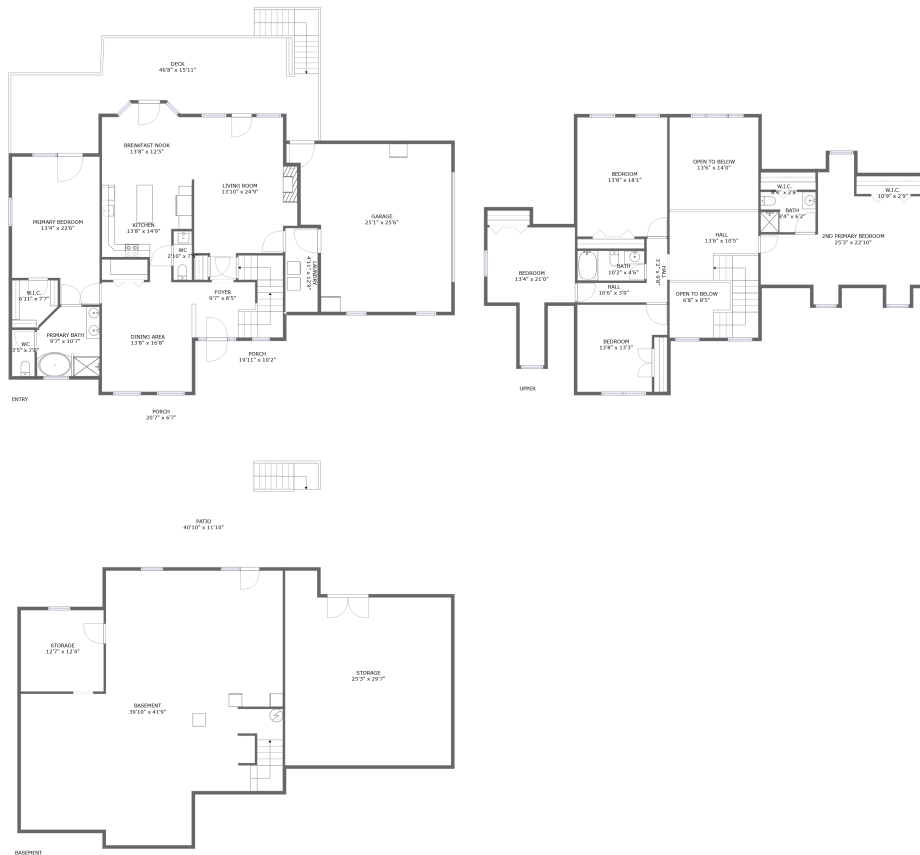


# 125 Backcove, The Waterfront, Moneta, Franklin County, Virginia, United States, 24121

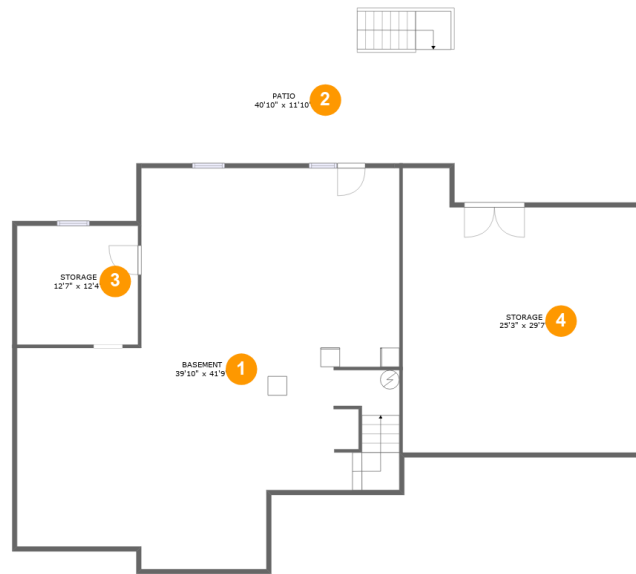


## Property summary

**1** Garages      **5** Bedrooms      **3** Bathrooms      **1** Half baths

**3** Floors      **3,185** Gross living area sqft      **7,705** Total sqft

# 125 Backcove, The Waterfront, Moneta, Franklin County, Virginia, United States, 24121



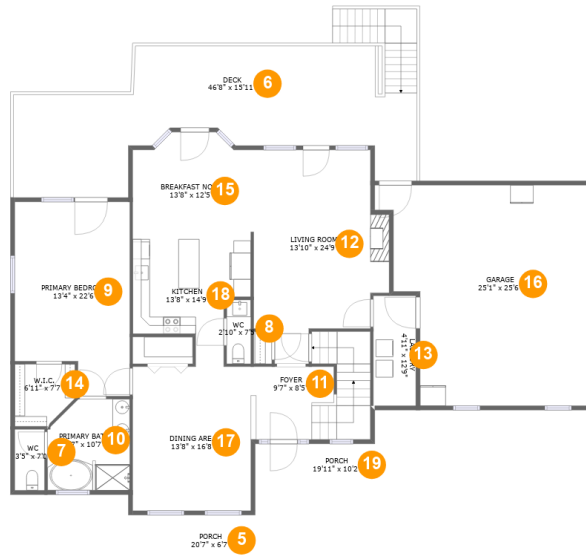
## Room dimensions

Floor 1

Total sqft: 2692 Living area: 0

#		Dimensions	sqft	Counted as living area
1	Basement	39'10" x 41'9"	1272 sq. ft	No
2	Outdoor	40'10" x 11'10"	471 sq. ft	No
3	Storage	12'7" x 12'4"	156 sq. ft	No
4	Storage	25'3" x 29'7"	664 sq. ft	No

# 125 Backcove, The Waterfront, Moneta, Franklin County, Virginia, United States, 24121



## Room dimensions

Floor 2

Total sqft: 3178

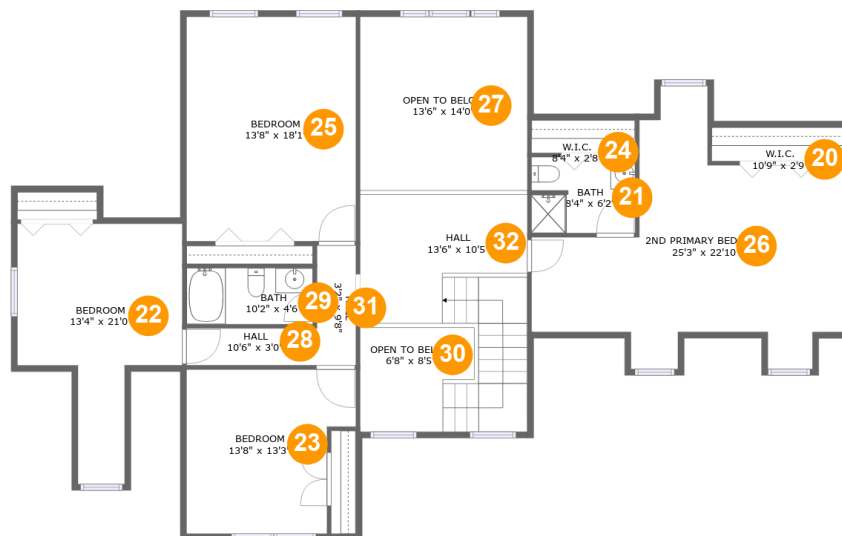
Living area: 1682

#		Dimensions	sqft	Counted as living area
5	Outdoor	20'7" x 6'7"	136 sq. ft	No
6	Outdoor	46'8" x 15'11"	615 sq. ft	No
7	Bath	3'5" x 7'0"	24 sq. ft	Yes
8	Bath	2'10" x 7'5"	21 sq. ft	Yes
9	Bedroom	13'4" x 22'6"	270 sq. ft	Yes
10	Bath	9'7" x 10'7"	94 sq. ft	Yes
11	Entry	9'7" x 8'5"	142 sq. ft	Yes
12	Living Room	13'10" x 24'9"	318 sq. ft	Yes
13	Utility	4'11" x 12'9"	63 sq. ft	Yes
14	Cl	6'11" x 7'7"	45 sq. ft	Yes
15	Nook	13'8" x 12'5"	156 sq. ft	Yes

**125 Backcove, The Waterfront, Moneta, Franklin  
County, Virginia, United States, 24121**

#		Dimensions	sqft	Counted as living area
16	Garage	25'1" x 25'6"	550 sq. ft	No
17	Dining Room	13'8" x 16'8"	228 sq. ft	Yes
18	Kitchen	13'8" x 14'9"	149 sq. ft	Yes
19	Outdoor	19'11" x 10'2"	160 sq. ft	No

# 125 Backcove, The Waterfront, Moneta, Franklin County, Virginia, United States, 24121



## Room dimensions

Floor 3

Total sqft: 1835

Living area: 1503

#		Dimensions	sqft	Counted as living area
20	Cl	10'9" x 2'9"	19 sq. ft	Yes
21	Bath	8'4" x 6'2"	50 sq. ft	Yes
22	Bedroom	13'4" x 21'0"	188 sq. ft	Yes
23	Bedroom	13'8" x 13'3"	161 sq. ft	Yes
24	Cl	8'4" x 2'8"	10 sq. ft	Yes
25	Bedroom	13'8" x 18'1"	248 sq. ft	Yes
26	2nd Primary Bedroom	25'3" x 22'10"	321 sq. ft	Yes
27	Open To Below	13'6" x 14'0"	189 sq. ft	No
28	Hall	10'6" x 3'0"	31 sq. ft	Yes
29	Bath	10'2" x 4'6"	46 sq. ft	Yes

Scan captured on Wed, 06 Nov 2024 20:48:56 GMT

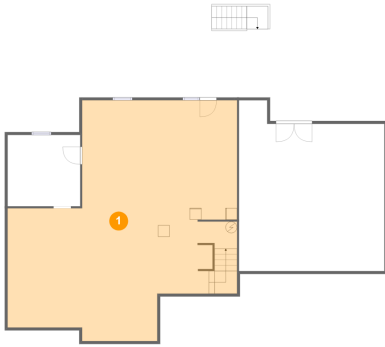
Information is calculated by Cubicasa technology deemed highly reliable but not guaranteed.

**125 Backcove, The Waterfront, Moneta, Franklin  
County, Virginia, United States, 24121**

#		Dimensions	sqft	Counted as living area
30	Open To Below	6'8" x 8'5"	67 sq. ft	No
31	Hall	3'2" x 9'8"	30 sq. ft	Yes
32	Hall	13'6" x 10'5"	196 sq. ft	Yes

# 125 Backcove, The Waterfront, Moneta, Franklin County, Virginia, United States, 24121

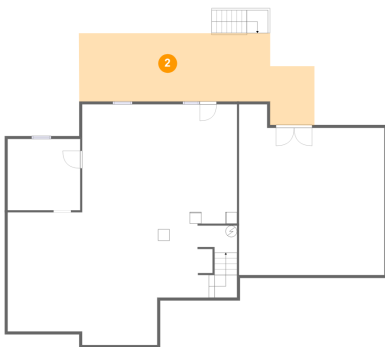
## 1 Floor 1 - Basement



Dimensions: 39'10" x 41'9"  
Area: 1272 sq. ft  
Counted as living area: No

Heated: Yes  
Finished: No  
Enclosed: Yes  
Contiguous: Yes  
Permitted: Yes  
Wet space: No  
Addition: No  
Conversion: No

## 2 Floor 1 - Outdoor

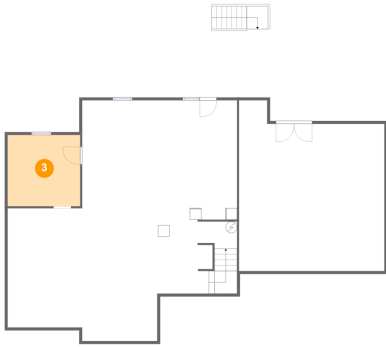


Dimensions: 40'10" x 11'10"  
Area: 471 sq. ft  
Counted as living area: No

Heated: No  
Finished: Yes  
Enclosed: No  
Contiguous: Yes  
Permitted: Yes  
Wet space: No  
Addition: No  
Conversion: No

# 125 Backcove, The Waterfront, Moneta, Franklin County, Virginia, United States, 24121

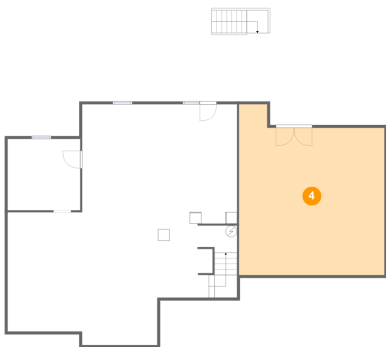
## 3 Floor 1 - Storage



Dimensions: 12'7" x 12'4"  
Area: 156 sq. ft  
Counted as living area: No

Heated: No  
Finished: No  
Enclosed: No  
Contiguous: Yes  
Permitted: Yes  
Wet space: No  
Addition: No  
Conversion: No

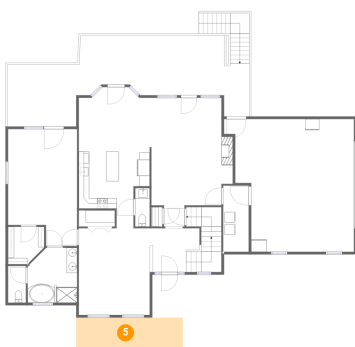
## 4 Floor 1 - Storage



Dimensions: 25'3" x 29'7"  
Area: 664 sq. ft  
Counted as living area: No

Heated: No  
Finished: No  
Enclosed: No  
Contiguous: Yes  
Permitted: Yes  
Wet space: No  
Addition: No  
Conversion: No

## 5 Floor 2 - Outdoor



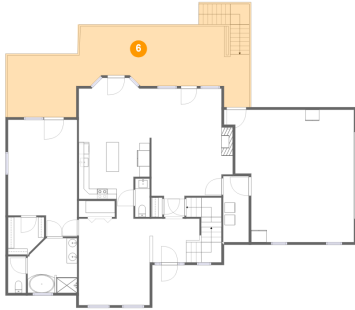
Dimensions: 20'7" x 6'7"  
Area: 136 sq. ft  
Counted as living area: No

Heated: No  
Finished: Yes  
Enclosed: No  
Contiguous: Yes  
Permitted: Yes  
Wet space: No  
Addition: No  
Conversion: No



# 125 Backcove, The Waterfront, Moneta, Franklin County, Virginia, United States, 24121

## 6 Floor 2 - Outdoor



Dimensions: 46'8" x 15'11"  
Area: 615 sq. ft  
Counted as living area: No

Heated: No  
Finished: Yes  
Enclosed: No  
Contiguous: Yes  
Permitted: Yes  
Wet space: No  
Addition: No  
Conversion: No

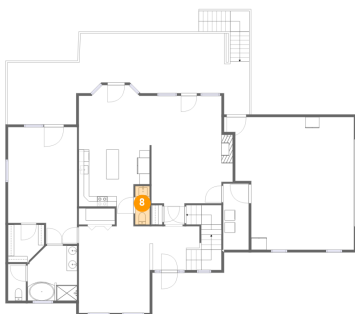
## 7 Floor 2 - Bath



Dimensions: 3'5" x 7'0"  
Area: 24 sq. ft  
Counted as living area: Yes

Heated: Yes  
Finished: Yes  
Enclosed: Yes  
Contiguous: Yes  
Permitted: Yes  
Wet space: Yes  
Addition: No  
Conversion: No

## 8 Floor 2 - Bath

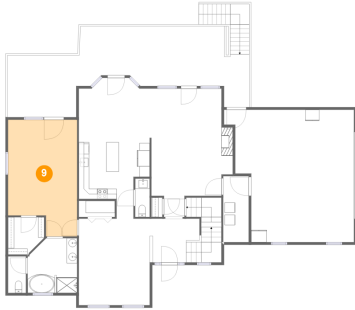


Dimensions: 2'10" x 7'5"  
Area: 21 sq. ft  
Counted as living area: Yes

Heated: Yes  
Finished: Yes  
Enclosed: Yes  
Contiguous: Yes  
Permitted: Yes  
Wet space: Yes  
Addition: No  
Conversion: No

# 125 Backcove, The Waterfront, Moneta, Franklin County, Virginia, United States, 24121

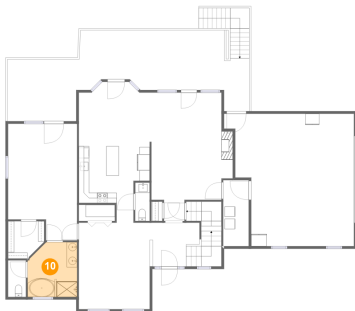
## 9 Floor 2 - Bedroom



Dimensions: 13'4" x 22'6"  
Area: 270 sq. ft  
Counted as living area: Yes

Heated: Yes  
Finished: Yes  
Enclosed: Yes  
Contiguous: Yes  
Permitted: Yes  
Wet space: No  
Addition: No  
Conversion: No

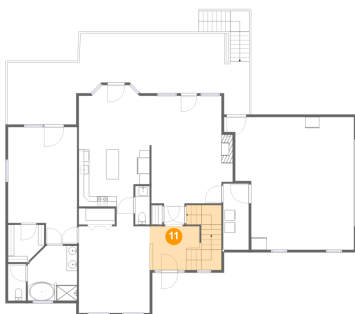
## 10 Floor 2 - Bath



Dimensions: 9'7" x 10'7"  
Area: 94 sq. ft  
Counted as living area: Yes

Heated: Yes  
Finished: Yes  
Enclosed: Yes  
Contiguous: Yes  
Permitted: Yes  
Wet space: Yes  
Addition: No  
Conversion: No

## 11 Floor 2 - Entry

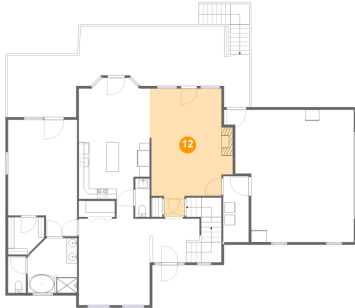


Dimensions: 9'7" x 8'5"  
Area: 142 sq. ft  
Counted as living area: Yes

Heated: Yes  
Finished: Yes  
Enclosed: Yes  
Contiguous: Yes  
Permitted: Yes  
Wet space: No  
Addition: No  
Conversion: No

# 125 Backcove, The Waterfront, Moneta, Franklin County, Virginia, United States, 24121

## 12 Floor 2 - Living Room



Dimensions: 13'10" x 24'9"  
Area: 318 sq. ft  
Counted as living area: Yes

Heated: Yes  
Finished: Yes  
Enclosed: Yes  
Contiguous: Yes  
Permitted: Yes  
Wet space: No  
Addition: No  
Conversion: No

## 13 Floor 2 - Utility



Dimensions: 4'11" x 12'9"  
Area: 63 sq. ft  
Counted as living area: Yes

Heated: Yes  
Finished: Yes  
Enclosed: Yes  
Contiguous: Yes  
Permitted: Yes  
Wet space: No  
Addition: No  
Conversion: No

## 14 Floor 2 - Cl

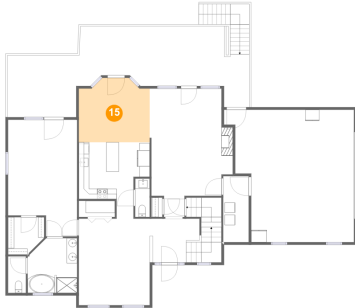


Dimensions: 6'11" x 7'7"  
Area: 45 sq. ft  
Counted as living area: Yes

Heated: Yes  
Finished: Yes  
Enclosed: Yes  
Contiguous: Yes  
Permitted: Yes  
Wet space: No  
Addition: No  
Conversion: No

# 125 Backcove, The Waterfront, Moneta, Franklin County, Virginia, United States, 24121

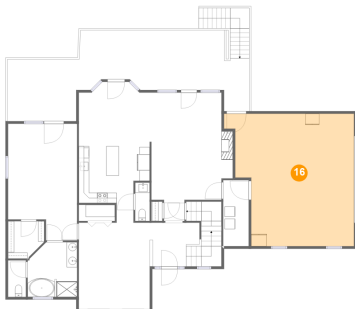
## 15 Floor 2 - Nook



Dimensions: 13'8" x 12'5"  
Area: 156 sq. ft  
Counted as living area: Yes

Heated: Yes  
Finished: Yes  
Enclosed: Yes  
Contiguous: Yes  
Permitted: Yes  
Wet space: No  
Addition: No  
Conversion: No

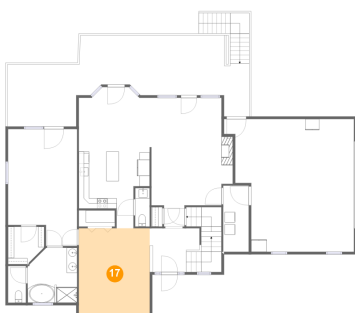
## 16 Floor 2 - Garage



Dimensions: 25'1" x 25'6"  
Area: 550 sq. ft  
Counted as living area: No

Heated: No  
Finished: No  
Enclosed: Yes  
Contiguous: Yes  
Permitted: Yes  
Wet space: No  
Addition: No  
Conversion: No

## 17 Floor 2 - Dining Room

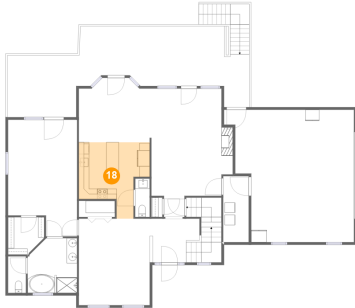


Dimensions: 13'8" x 16'8"  
Area: 228 sq. ft  
Counted as living area: Yes

Heated: Yes  
Finished: Yes  
Enclosed: Yes  
Contiguous: Yes  
Permitted: Yes  
Wet space: No  
Addition: No  
Conversion: No

# 125 Backcove, The Waterfront, Moneta, Franklin County, Virginia, United States, 24121

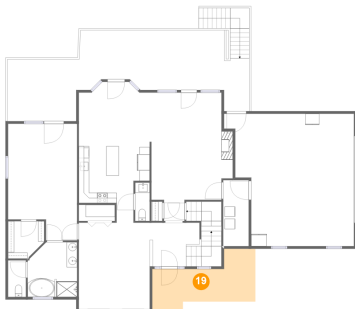
## 18 Floor 2 - Kitchen



Dimensions: 13'8" x 14'9"  
Area: 149 sq. ft  
Counted as living area: Yes

Heated: Yes  
Finished: Yes  
Enclosed: Yes  
Contiguous: Yes  
Permitted: Yes  
Wet space: No  
Addition: No  
Conversion: No

## 19 Floor 2 - Outdoor



Dimensions: 19'11" x 10'2"  
Area: 160 sq. ft  
Counted as living area: No

Heated: No  
Finished: Yes  
Enclosed: No  
Contiguous: Yes  
Permitted: Yes  
Wet space: No  
Addition: No  
Conversion: No

## 20 Floor 3 - Cl



Dimensions: 10'9" x 2'9"  
Area: 19 sq. ft  
Counted as living area: Yes

Heated: Yes  
Finished: Yes  
Enclosed: Yes  
Contiguous: Yes  
Permitted: Yes  
Wet space: No  
Addition: No  
Conversion: No

# 125 Backcove, The Waterfront, Moneta, Franklin County, Virginia, United States, 24121

## 21 Floor 3 - Bath



Dimensions: 8'4" x 6'2"  
Area: 50 sq. ft  
Counted as living area: Yes

Heated: Yes  
Finished: Yes  
Enclosed: Yes  
Contiguous: Yes  
Permitted: Yes  
Wet space: Yes  
Addition: No  
Conversion: No

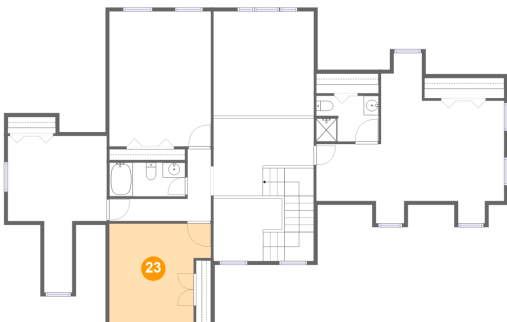
## 22 Floor 3 - Bedroom



Dimensions: 13'4" x 21'0"  
Area: 188 sq. ft  
Counted as living area: Yes

Heated: Yes  
Finished: Yes  
Enclosed: Yes  
Contiguous: Yes  
Permitted: Yes  
Wet space: No  
Addition: No  
Conversion: No

## 23 Floor 3 - Bedroom

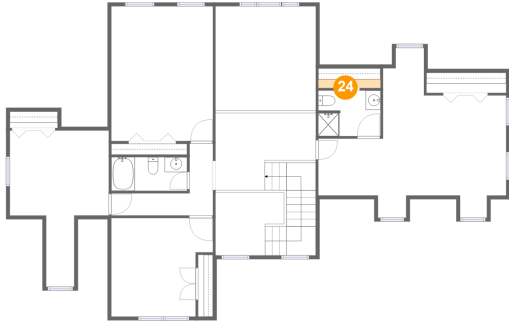


Dimensions: 13'8" x 13'3"  
Area: 161 sq. ft  
Counted as living area: Yes

Heated: Yes  
Finished: Yes  
Enclosed: Yes  
Contiguous: Yes  
Permitted: Yes  
Wet space: No  
Addition: No  
Conversion: No

# 125 Backcove, The Waterfront, Moneta, Franklin County, Virginia, United States, 24121

## 24 Floor 3 - Cl



Dimensions: 8'4" x 2'8"  
Area: 10 sq. ft  
Counted as living area: Yes

Heated: Yes  
Finished: Yes  
Enclosed: Yes  
Contiguous: Yes  
Permitted: Yes  
Wet space: No  
Addition: No  
Conversion: No

## 25 Floor 3 - Bedroom



Dimensions: 13'8" x 18'1"  
Area: 248 sq. ft  
Counted as living area: Yes

Heated: Yes  
Finished: Yes  
Enclosed: Yes  
Contiguous: Yes  
Permitted: Yes  
Wet space: No  
Addition: No  
Conversion: No

## 26 Floor 3 - 2nd Primary Bedroom

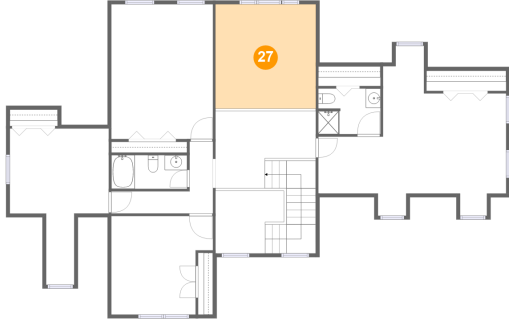


Dimensions: 25'3" x 22'10"  
Area: 321 sq. ft  
Counted as living area: Yes

Heated: Yes  
Finished: Yes  
Enclosed: Yes  
Contiguous: Yes  
Permitted: Yes  
Wet space: No  
Addition: No  
Conversion: No

# 125 Backcove, The Waterfront, Moneta, Franklin County, Virginia, United States, 24121

## 27 Floor 3 - Open To Below



Dimensions: 13'6" x 14'0"  
Area: 189 sq. ft  
Counted as living area: No

Heated: No  
Finished: No  
Enclosed: No  
Contiguous: Yes  
Permitted: No  
Wet space: No  
Addition: No  
Conversion: No

## 28 Floor 3 - Hall



Dimensions: 10'6" x 3'0"  
Area: 31 sq. ft  
Counted as living area: Yes

Heated: Yes  
Finished: Yes  
Enclosed: Yes  
Contiguous: Yes  
Permitted: Yes  
Wet space: No  
Addition: No  
Conversion: No

## 29 Floor 3 - Bath



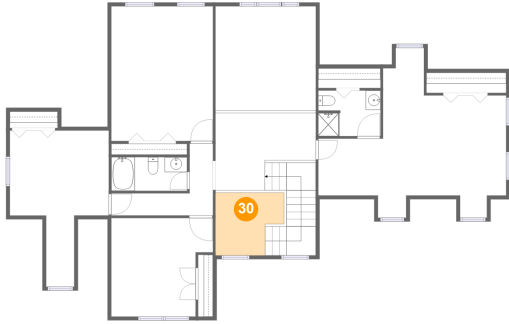
Dimensions: 10'2" x 4'6"  
Area: 46 sq. ft  
Counted as living area: Yes

Heated: Yes  
Finished: Yes  
Enclosed: Yes  
Contiguous: Yes  
Permitted: Yes  
Wet space: Yes  
Addition: No  
Conversion: No



# 125 Backcove, The Waterfront, Moneta, Franklin County, Virginia, United States, 24121

## 30 Floor 3 - Open To Below



Dimensions: 6'8" x 8'5"  
Area: 67 sq. ft  
Counted as living area: No

Heated: No  
Finished: No  
Enclosed: No  
Contiguous: Yes  
Permitted: No  
Wet space: No  
Addition: No  
Conversion: No

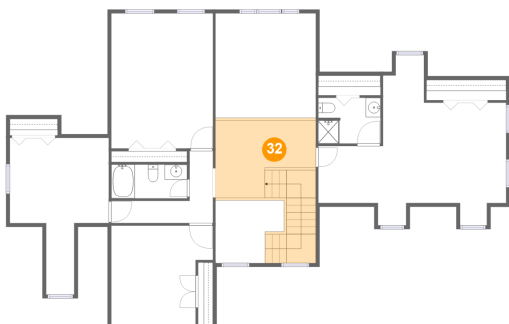
## 31 Floor 3 - Hall



Dimensions: 3'2" x 9'8"  
Area: 30 sq. ft  
Counted as living area: Yes

Heated: Yes  
Finished: Yes  
Enclosed: Yes  
Contiguous: Yes  
Permitted: Yes  
Wet space: No  
Addition: No  
Conversion: No

## 32 Floor 3 - Hall



Dimensions: 13'6" x 10'5"  
Area: 196 sq. ft  
Counted as living area: Yes

Heated: Yes  
Finished: Yes  
Enclosed: Yes  
Contiguous: Yes  
Permitted: Yes  
Wet space: No  
Addition: No  
Conversion: No