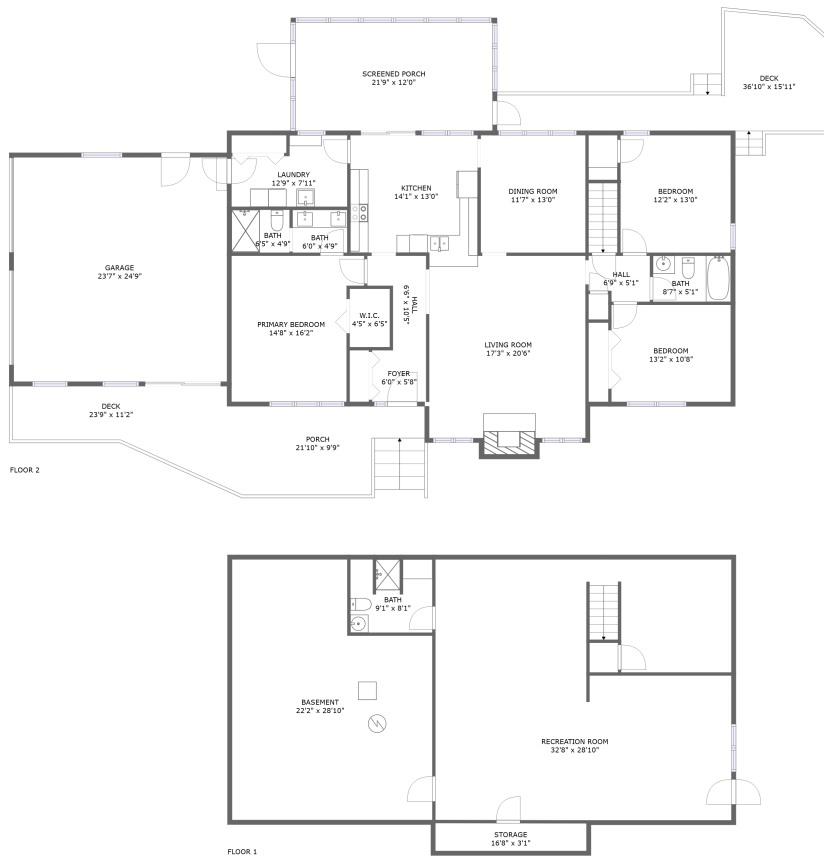



6847 Columbine Lane, Summerdean Gardens, Hollins, Roanoke County, Virginia, United States, 24019



Property summary


 **1** Garages

 **3** Bedrooms

 **3** Bathrooms

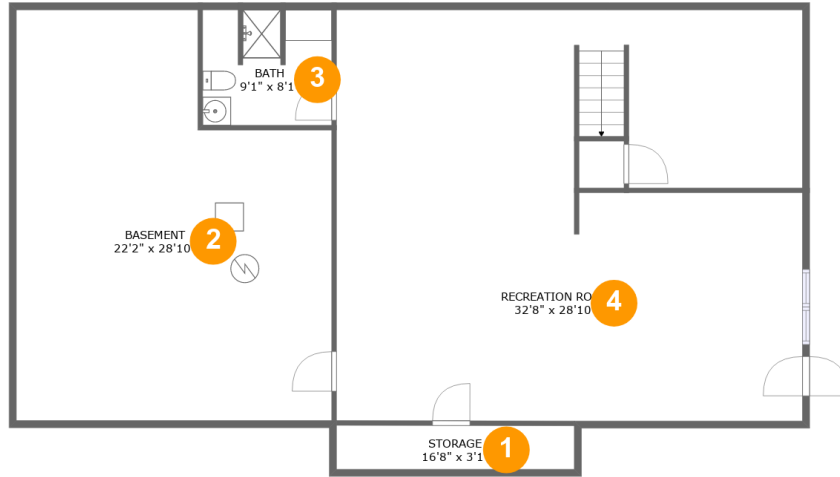
 **0** Half baths

 **2** Floors

 **2,864** Gross living area sqft

 **5,078** Total sqft

6847 Columbine Lane, Summerdean Gardens, Hollins, Roanoke County, Virginia, United States, 24019



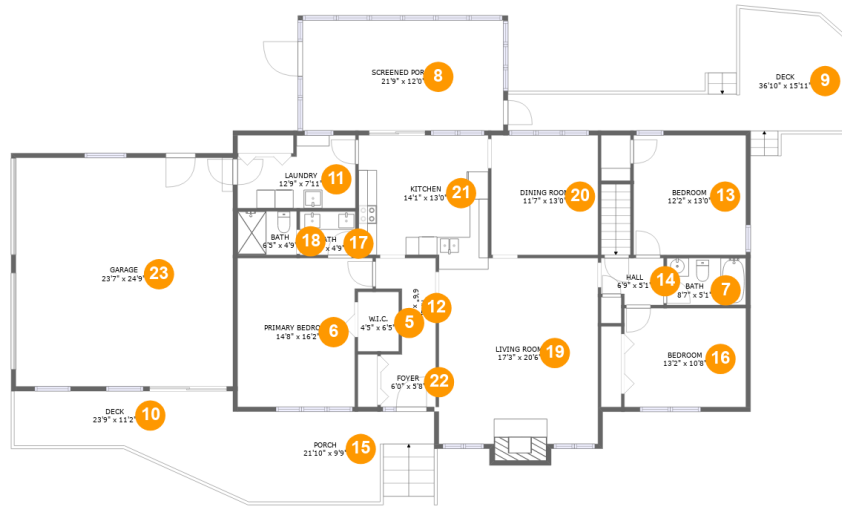
Room dimensions

Floor 1

Total sqft: 1734 Living area: 1081

#		Dimensions	sqft	Counted as living area
1	Storage	16'8" x 3'1"	51 sq. ft	No
2	Basement	22'2" x 28'10"	558 sq. ft	No
3	Bath	9'1" x 8'1"	71 sq. ft	Yes
4	Recreation Room	32'8" x 28'10"	918 sq. ft	Yes

6847 Columbine Lane, Summerdean Gardens, Hollins, Roanoke County, Virginia, United States, 24019



Room dimensions

Floor 2

Total sqft: 3344 Living area: 1783

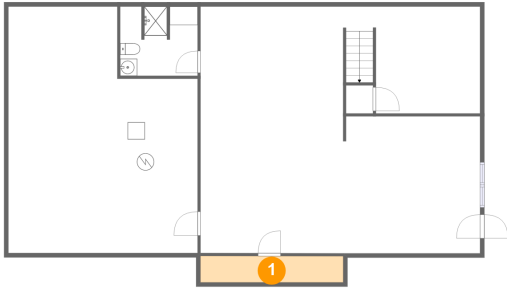
#		Dimensions	sqft	Counted as living area
5	W.I.C.	4'5" x 6'5"	29 sq. ft	Yes
6	Primary Bedroom	14'8" x 16'2"	212 sq. ft	Yes
7	Bath	8'7" x 5'1"	44 sq. ft	Yes
8	Screened Porch	21'9" x 12'0"	261 sq. ft	No
9	Deck	36'10" x 15'11"	260 sq. ft	No
10	Deck	23'9" x 11'2"	172 sq. ft	No
11	Laundry	12'9" x 7'11"	86 sq. ft	Yes
12	Hall	6'6" x 10'5"	48 sq. ft	Yes
13	Bedroom	12'2" x 13'0"	158 sq. ft	Yes
14	Hall	6'9" x 5'1"	31 sq. ft	Yes
15	Porch	21'10" x 9'9"	213 sq. ft	No

**6847 Columbine Lane, Summerdean Gardens, Hollins,
Roanoke County, Virginia, United States, 24019**

#		Dimensions	sqft	Counted as living area
16	Bedroom	13'2" x 10'8"	141 sq. ft	Yes
17	Bath	6'0" x 4'9"	29 sq. ft	Yes
18	Bath	6'5" x 4'9"	30 sq. ft	Yes
19	Living Room	17'3" x 20'6"	360 sq. ft	Yes
20	Dining Room	11'7" x 13'0"	150 sq. ft	Yes
21	Kitchen	14'1" x 13'0"	183 sq. ft	Yes
22	Foyer	6'0" x 5'8"	34 sq. ft	Yes
23	Garage	23'7" x 24'9"	584 sq. ft	No

**6847 Columbine Lane, Summerdean Gardens, Hollins,
Roanoke County, Virginia, United States, 24019**

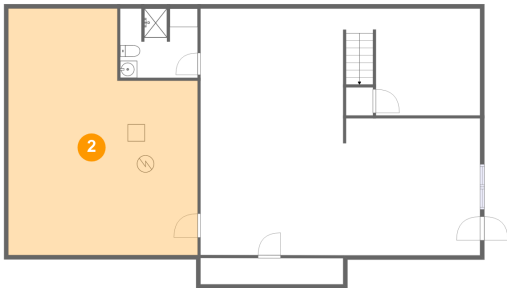
1 Floor 1 - Storage



Dimensions: 16'8" x 3'1"
Area: 51 sq. ft
Counted as living area: No

Heated: No
Finished: No
Enclosed: No
Contiguous: Yes
Permitted: Yes
Wet space: No
Addition: No
Conversion: No

2 Floor 1 - Basement

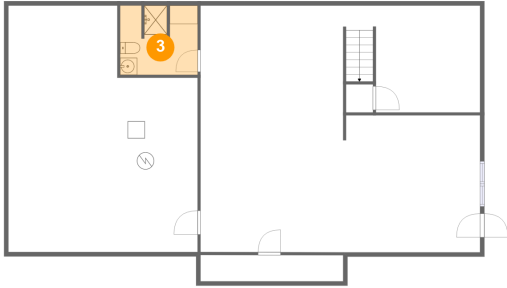


Dimensions: 22'2" x 28'10"
Area: 558 sq. ft
Counted as living area: No

Heated: Yes
Finished: No
Enclosed: Yes
Contiguous: Yes
Permitted: Yes
Wet space: No
Addition: No
Conversion: No

6847 Columbine Lane, Summerdean Gardens, Hollins, Roanoke County, Virginia, United States, 24019

3 Floor 1 - Bath



Dimensions: 9'1" x 8'1"
Area: 71 sq. ft
Counted as living area: Yes

Heated: Yes
Finished: Yes
Enclosed: Yes
Contiguous: Yes
Permitted: Yes
Wet space: Yes
Addition: No
Conversion: No

4 Floor 1 - Recreation Room



Dimensions: 32'8" x 28'10"
Area: 918 sq. ft
Counted as living area: Yes

Heated: Yes
Finished: Yes
Enclosed: Yes
Contiguous: Yes
Permitted: Yes
Wet space: No
Addition: No
Conversion: No

5 Floor 2 - W.I.C.

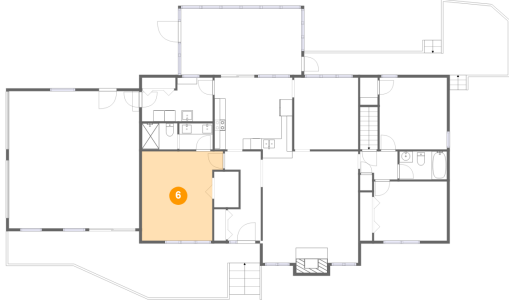


Dimensions: 4'5" x 6'5"
Area: 29 sq. ft
Counted as living area: Yes

Heated: Yes
Finished: Yes
Enclosed: Yes
Contiguous: Yes
Permitted: Yes
Wet space: No
Addition: No
Conversion: No

**6847 Columbine Lane, Summerdean Gardens, Hollins,
Roanoke County, Virginia, United States, 24019**

6 Floor 2 - Primary Bedroom



Dimensions: 14'8" x 16'2"
Area: 212 sq. ft
Counted as living area: Yes

Heated: Yes
Finished: Yes
Enclosed: Yes
Contiguous: Yes
Permitted: Yes
Wet space: No
Addition: No
Conversion: No

7 Floor 2 - Bath



Dimensions: 8'7" x 5'1"
Area: 44 sq. ft
Counted as living area: Yes

Heated: Yes
Finished: Yes
Enclosed: Yes
Contiguous: Yes
Permitted: Yes
Wet space: Yes
Addition: No
Conversion: No

8 Floor 2 - Screened Porch

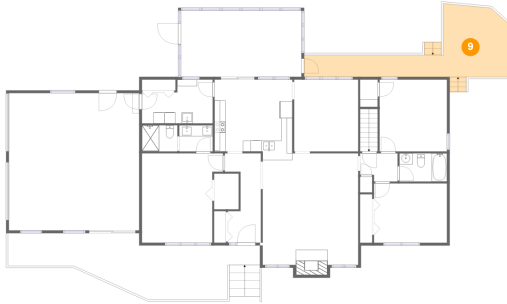


Dimensions: 21'9" x 12'0"
Area: 261 sq. ft
Counted as living area: No

Heated: No
Finished: Yes
Enclosed: No
Contiguous: Yes
Permitted: Yes
Wet space: No
Addition: No
Conversion: No

6847 Columbine Lane, Summerdean Gardens, Hollins, Roanoke County, Virginia, United States, 24019

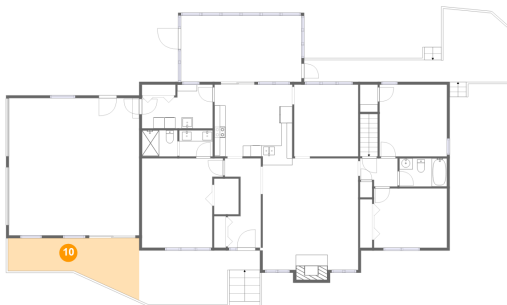
9 Floor 2 - Deck



Dimensions: 36'10" x 15'11"
Area: 260 sq. ft
Counted as living area: No

Heated: No
Finished: Yes
Enclosed: No
Contiguous: Yes
Permitted: Yes
Wet space: No
Addition: No
Conversion: No

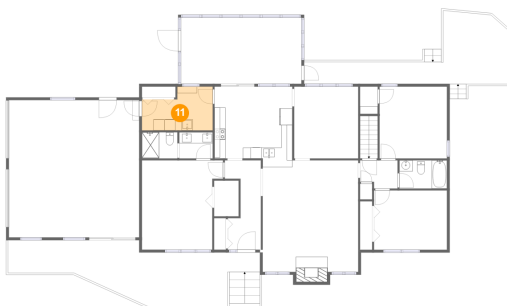
10 Floor 2 - Deck



Dimensions: 23'9" x 11'2"
Area: 172 sq. ft
Counted as living area: No

Heated: No
Finished: Yes
Enclosed: No
Contiguous: Yes
Permitted: Yes
Wet space: No
Addition: No
Conversion: No

11 Floor 2 - Laundry

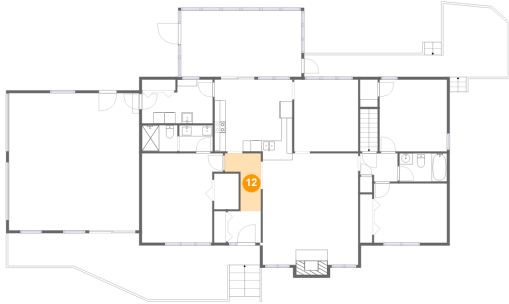


Dimensions: 12'9" x 7'11"
Area: 86 sq. ft
Counted as living area: Yes

Heated: Yes
Finished: Yes
Enclosed: Yes
Contiguous: Yes
Permitted: Yes
Wet space: No
Addition: No
Conversion: No

6847 Columbine Lane, Summerdean Gardens, Hollins, Roanoke County, Virginia, United States, 24019

12 Floor 2 - Hall



Dimensions: 6'6" x 10'5"
Area: 48 sq. ft
Counted as living area: Yes

Heated: Yes
Finished: Yes
Enclosed: Yes
Contiguous: Yes
Permitted: Yes
Wet space: No
Addition: No
Conversion: No

13 Floor 2 - Bedroom



Dimensions: 12'2" x 13'0"
Area: 158 sq. ft
Counted as living area: Yes

Heated: Yes
Finished: Yes
Enclosed: Yes
Contiguous: Yes
Permitted: Yes
Wet space: No
Addition: No
Conversion: No

14 Floor 2 - Hall



Dimensions: 6'9" x 5'1"
Area: 31 sq. ft
Counted as living area: Yes

Heated: Yes
Finished: Yes
Enclosed: Yes
Contiguous: Yes
Permitted: Yes
Wet space: No
Addition: No
Conversion: No

**6847 Columbine Lane, Summerdean Gardens, Hollins,
Roanoke County, Virginia, United States, 24019**

15 Floor 2 - Porch



Dimensions: 21'10" x 9'9"
Area: 213 sq. ft
Counted as living area: No

Heated: No
Finished: Yes
Enclosed: No
Contiguous: Yes
Permitted: Yes
Wet space: No
Addition: No
Conversion: No

16 Floor 2 - Bedroom



Dimensions: 13'2" x 10'8"
Area: 141 sq. ft
Counted as living area: Yes

Heated: Yes
Finished: Yes
Enclosed: Yes
Contiguous: Yes
Permitted: Yes
Wet space: No
Addition: No
Conversion: No

17 Floor 2 - Bath



Dimensions: 6'0" x 4'9"
Area: 29 sq. ft
Counted as living area: Yes

Heated: Yes
Finished: Yes
Enclosed: Yes
Contiguous: Yes
Permitted: Yes
Wet space: Yes
Addition: No
Conversion: No

6847 Columbine Lane, Summerdean Gardens, Hollins, Roanoke County, Virginia, United States, 24019

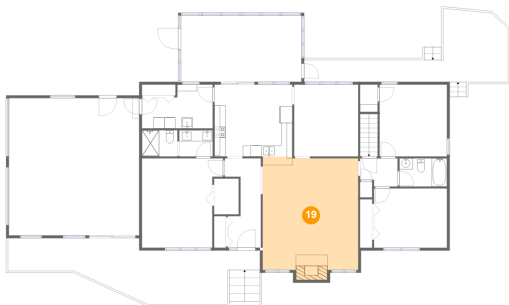
18 Floor 2 - Bath



Dimensions: 6'5" x 4'9"
Area: 30 sq. ft
Counted as living area: Yes

Heated: Yes
Finished: Yes
Enclosed: Yes
Contiguous: Yes
Permitted: Yes
Wet space: Yes
Addition: No
Conversion: No

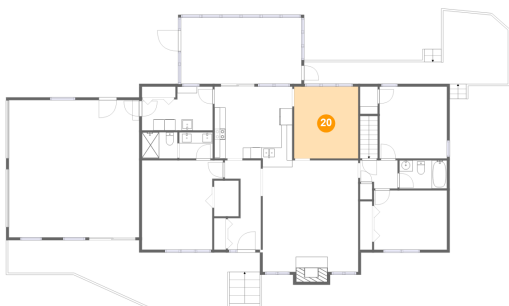
19 Floor 2 - Living Room



Dimensions: 17'3" x 20'6"
Area: 360 sq. ft
Counted as living area: Yes

Heated: Yes
Finished: Yes
Enclosed: Yes
Contiguous: Yes
Permitted: Yes
Wet space: No
Addition: No
Conversion: No

20 Floor 2 - Dining Room



Dimensions: 11'7" x 13'0"
Area: 150 sq. ft
Counted as living area: Yes

Heated: Yes
Finished: Yes
Enclosed: Yes
Contiguous: Yes
Permitted: Yes
Wet space: No
Addition: No
Conversion: No

6847 Columbine Lane, Summerdean Gardens, Hollins, Roanoke County, Virginia, United States, 24019

21 Floor 2 - Kitchen



Dimensions: 14'1" x 13'0"
Area: 183 sq. ft
Counted as living area: Yes

Heated: Yes
Finished: Yes
Enclosed: Yes
Contiguous: Yes
Permitted: Yes
Wet space: No
Addition: No
Conversion: No

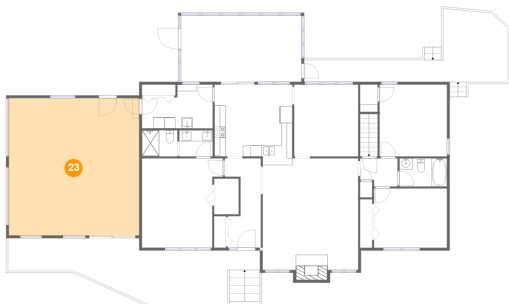
22 Floor 2 - Foyer



Dimensions: 6'0" x 5'8"
Area: 34 sq. ft
Counted as living area: Yes

Heated: Yes
Finished: Yes
Enclosed: Yes
Contiguous: Yes
Permitted: Yes
Wet space: No
Addition: No
Conversion: No

23 Floor 2 - Garage



Dimensions: 23'7" x 24'9"
Area: 584 sq. ft
Counted as living area: No

Heated: No
Finished: No
Enclosed: Yes
Contiguous: Yes
Permitted: Yes
Wet space: No
Addition: No
Conversion: No