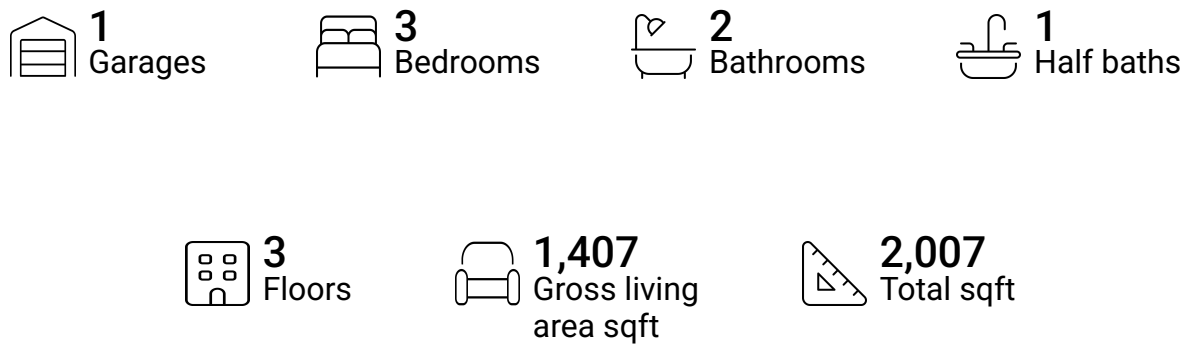


Home report

43 Mcphail Road, Carleton Place, Lanark County, Ontario,
Canada, K7C 0P6

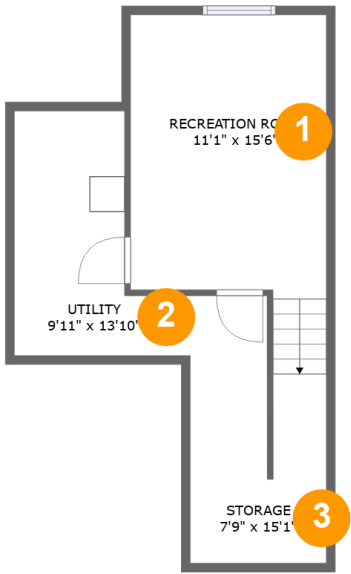


Property summary



Home report

43 Mcphail Road, Carleton Place, Lanark County, Ontario,
Canada, K7C 0P6



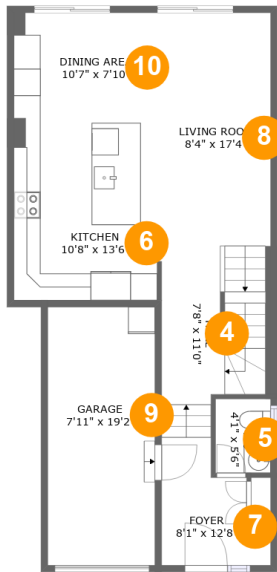
Room dimensions

Floor 1 Total sqft: 433 Living area: 0

#		Max Dimensions	sqft	Included
1	Recreation Room	11'1" x 15'6"	187 sq. ft	No
2	Utility	9'11" x 13'10"	99 sq. ft	No
3	Storage	7'9" x 15'1"	100 sq. ft	No

Home report

43 Mcphail Road, Carleton Place, Lanark County, Ontario,
Canada, K7C 0P6



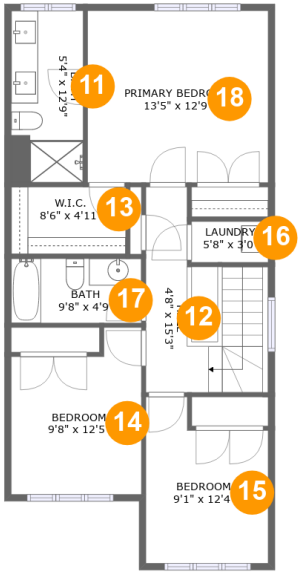
Room dimensions

Floor 2 Total sqft: 790 Living area: 623

#		Max Dimensions	sqft	Included
4	Hall	7'8" x 11'0"	90 sq. ft	Yes
5	WC	4'1" x 5'6"	23 sq. ft	Yes
6	Kitchen	10'8" x 13'6"	144 sq. ft	Yes
7	Foyer	8'1" x 12'8"	68 sq. ft	Yes
8	Living Room	8'4" x 17'4"	146 sq. ft	Yes
9	Garage	7'11" x 19'2"	153 sq. ft	No
10	Dining Area	10'7" x 7'10"	84 sq. ft	Yes

Home report

43 Mcphail Road, Carleton Place, Lanark County, Ontario,
Canada, K7C 0P6



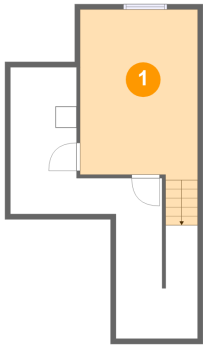
Room dimensions

Floor 3 Total sqft: 784 Living area: 784

#		Max Dimensions	sqft	Included
11	Bath	5'4" x 12'9"	68 sq. ft	Yes
12	Hall	4'8" x 15'3"	103 sq. ft	Yes
13	W.I.C.	8'6" x 4'11"	42 sq. ft	Yes
14	Bedroom	9'8" x 12'5"	105 sq. ft	Yes
15	Bedroom	9'1" x 12'4"	97 sq. ft	Yes
16	Laundry	5'8" x 3'0"	17 sq. ft	Yes
17	Bath	9'8" x 4'9"	46 sq. ft	Yes
18	Primary Bedroom	13'5" x 12'9"	171 sq. ft	Yes

43 Mcphail Road, Carleton Place, Lanark County, Ontario,
Canada, K7C 0P6

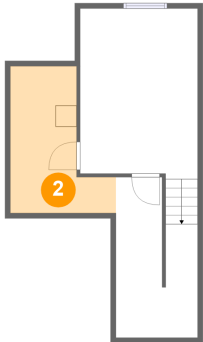
1 Floor 1 - Recreation Room



Max Dimensions: 11'1" x 15'6"
Calculated Area: 187 sq. ft
Included: No

Heated: Yes
Finished: Yes
Enclosed: Yes
Contiguous: No
Permitted: Yes
Wet space: No
Addition: No
Conversion: No

2 Floor 1 - Utility

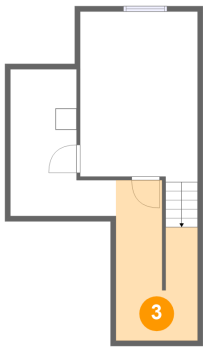


Max Dimensions: 9'11" x 13'10"
Calculated Area: 99 sq. ft
Included: No

Heated: Yes
Finished: No
Enclosed: Yes
Contiguous: Yes
Permitted: Yes
Wet space: No
Addition: No
Conversion: No

43 Mcphail Road, Carleton Place, Lanark County, Ontario,
Canada, K7C 0P6

3 Floor 1 - Storage



Max Dimensions: 7'9" x 15'1"
Calculated Area: 100 sq. ft
Included: No

Heated: No
Finished: No
Enclosed: No
Contiguous: Yes
Permitted: Yes
Wet space: No
Addition: No
Conversion: No

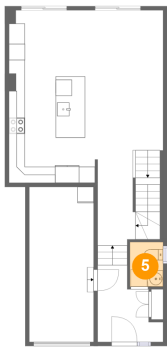
4 Floor 2 - Hall



Max Dimensions: 7'8" x 11'0"
Calculated Area: 90 sq. ft
Included: Yes

Heated: Yes
Finished: Yes
Enclosed: Yes
Contiguous: Yes
Permitted: Yes
Wet space: No
Addition: No
Conversion: No

5 Floor 2 - WC



Max Dimensions: 4'1" x 5'6"
Calculated Area: 23 sq. ft
Included: Yes

Heated: Yes
Finished: Yes
Enclosed: Yes
Contiguous: Yes
Permitted: Yes
Wet space: No
Addition: No
Conversion: No

43 Mcphail Road, Carleton Place, Lanark County, Ontario,
Canada, K7C 0P6

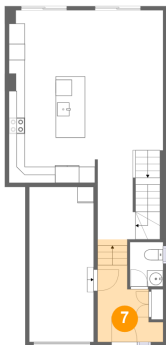
6 Floor 2 - Kitchen



Max Dimensions: 10'8" x 13'6"
Calculated Area: 144 sq. ft
Included: Yes

Heated: Yes
Finished: Yes
Enclosed: Yes
Contiguous: Yes
Permitted: Yes
Wet space: No
Addition: No
Conversion: No

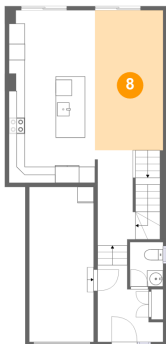
7 Floor 2 - Foyer



Max Dimensions: 8'1" x 12'8"
Calculated Area: 68 sq. ft
Included: Yes

Heated: Yes
Finished: Yes
Enclosed: Yes
Contiguous: Yes
Permitted: Yes
Wet space: No
Addition: No
Conversion: No

8 Floor 2 - Living Room



Max Dimensions: 8'4" x 17'4"
Calculated Area: 146 sq. ft
Included: Yes

Heated: Yes
Finished: Yes
Enclosed: Yes
Contiguous: Yes
Permitted: Yes
Wet space: No
Addition: No
Conversion: No

43 Mcphail Road, Carleton Place, Lanark County, Ontario,
Canada, K7C 0P6

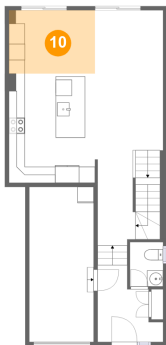
9 Floor 2 - Garage



Max Dimensions: 7'11" x 19'2"
Calculated Area: 153 sq. ft
Included: No

Heated: No
Finished: No
Enclosed: Yes
Contiguous: Yes
Permitted: Yes
Wet space: No
Addition: No
Conversion: No

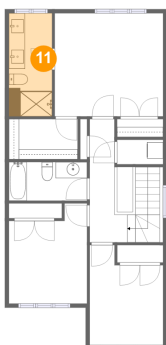
10 Floor 2 - Dining Area



Max Dimensions: 10'7" x 7'10"
Calculated Area: 84 sq. ft
Included: Yes

Heated: Yes
Finished: Yes
Enclosed: Yes
Contiguous: Yes
Permitted: Yes
Wet space: No
Addition: No
Conversion: No

11 Floor 3 - Bath



Max Dimensions: 5'4" x 12'9"
Calculated Area: 68 sq. ft
Included: Yes

Heated: Yes
Finished: Yes
Enclosed: Yes
Contiguous: Yes
Permitted: Yes
Wet space: Yes
Addition: No
Conversion: No

43 Mcphail Road, Carleton Place, Lanark County, Ontario,
Canada, K7C 0P6

12 Floor 3 - Hall



Max Dimensions: 4'8" x 15'3"
Calculated Area: 103 sq. ft
Included: Yes

Heated: Yes
Finished: Yes
Enclosed: Yes
Contiguous: Yes
Permitted: Yes
Wet space: No
Addition: No
Conversion: No

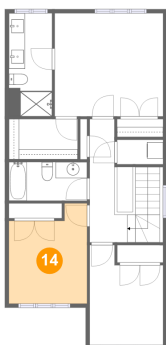
13 Floor 3 - W.I.C.



Max Dimensions: 8'6" x 4'11"
Calculated Area: 42 sq. ft
Included: Yes

Heated: Yes
Finished: Yes
Enclosed: Yes
Contiguous: Yes
Permitted: Yes
Wet space: No
Addition: No
Conversion: No

14 Floor 3 - Bedroom

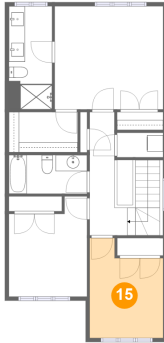


Max Dimensions: 9'8" x 12'5"
Calculated Area: 105 sq. ft
Included: Yes

Heated: Yes
Finished: Yes
Enclosed: Yes
Contiguous: Yes
Permitted: Yes
Wet space: No
Addition: No
Conversion: No

43 Mcphail Road, Carleton Place, Lanark County, Ontario,
Canada, K7C 0P6

15 Floor 3 - Bedroom



Max Dimensions: 9'1" x 12'4"
Calculated Area: 97 sq. ft
Included: Yes

Heated: Yes
Finished: Yes
Enclosed: Yes
Contiguous: Yes
Permitted: Yes
Wet space: No
Addition: No
Conversion: No

16 Floor 3 - Laundry



Max Dimensions: 5'8" x 3'0"
Calculated Area: 17 sq. ft
Included: Yes

Heated: Yes
Finished: Yes
Enclosed: Yes
Contiguous: Yes
Permitted: Yes
Wet space: No
Addition: No
Conversion: No

17 Floor 3 - Bath



Max Dimensions: 9'8" x 4'9"
Calculated Area: 46 sq. ft
Included: Yes

Heated: Yes
Finished: Yes
Enclosed: Yes
Contiguous: Yes
Permitted: Yes
Wet space: Yes
Addition: No
Conversion: No

43 Mcphail Road, Carleton Place, Lanark County, Ontario,
Canada, K7C 0P6

18 Floor 3 - Primary Bedroom



Max Dimensions: 13'5" x 12'9"
Calculated Area: 171 sq. ft
Included: Yes

Heated: Yes
Finished: Yes
Enclosed: Yes
Contiguous: Yes
Permitted: Yes
Wet space: No
Addition: No
Conversion: No