

Home report

15237 Apricot Lane, Quince Orchard Knolls, North Potomac,  
Montgomery County, Maryland, United States, 20878



Total Area: 2886 sq. ft

Below Ground: 1063 sq. ft, Floor 2: 1098 sq. ft, Floor 3: 725 sq. ft

Excluded: Storage 48 sq. ft, Outdoor Patio 294 sq. ft, Outdoor Porch 108 sq. ft, Garage 464 sq. ft, Fireplace 13 sq. ft

Property summary

3 Floors

4 Bedrooms

2 Bathrooms

Home report

**15237 Apricot Lane, Quince Orchard Knolls, North Potomac,  
Montgomery County, Maryland, United States, 20878**



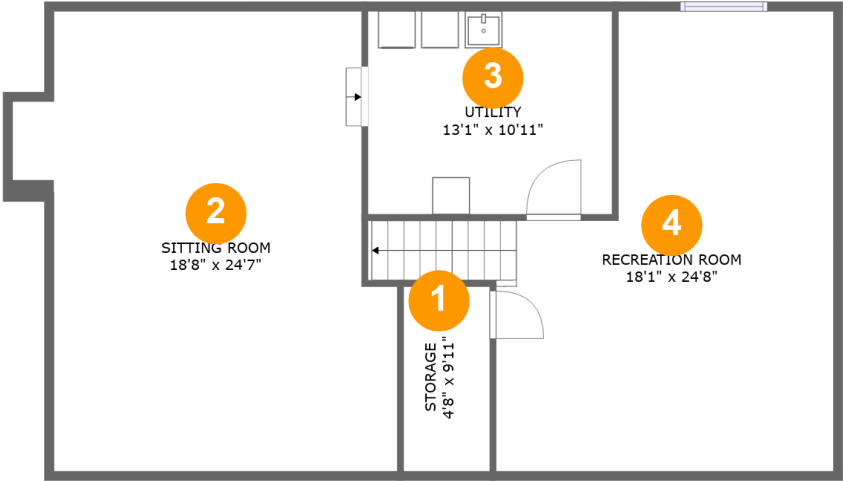
**1**  
Half baths



**1**  
Garages

Home report

15237 Apricot Lane, Quince Orchard Knolls, North Potomac,  
Montgomery County, Maryland, United States, 20878



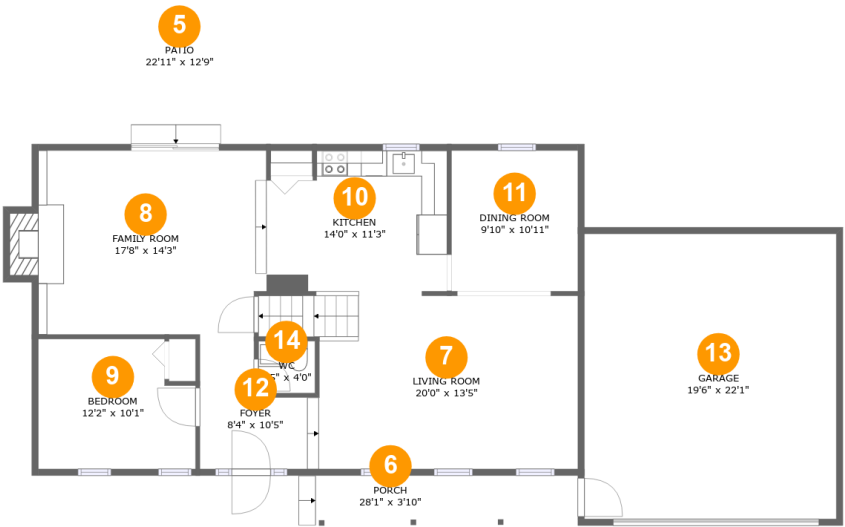
Room dimensions

Floor 1 Below ground Total:1063sqft   Excluded: 48sqft

#		Max Dimensions	sqft	Included
1	Storage	4'8" x 9'11"	46 sq. ft	No
2	Sitting Room	18'8" x 24'7"	437 sq. ft	Yes
3	Utility	13'1" x 10'11"	143 sq. ft	Yes
4	Recreation Room	18'1" x 24'8"	394 sq. ft	Yes

Home report

15237 Apricot Lane, Quince Orchard Knolls, North Potomac,  
Montgomery County, Maryland, United States, 20878



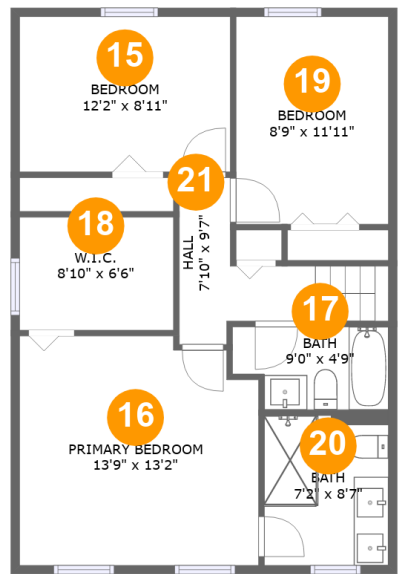
Room dimensions

Floor 2 Total:1098sqft   Excluded: 879sqft

#		Max Dimensions	sqft	Included
5	Patio	22'11" x 12'9"	294 sq. ft	No
6	Porch	28'1" x 3'10"	108 sq. ft	No
7	Living Room	20'0" x 13'5"	289 sq. ft	Yes
8	Family Room	17'8" x 14'3"	259 sq. ft	Yes
9	Bedroom	12'2" x 10'1"	114 sq. ft	Yes
10	Kitchen	14'0" x 11'3"	146 sq. ft	Yes
11	Dining Room	9'10" x 10'11"	107 sq. ft	Yes
12	Foyer	8'4" x 10'5"	67 sq. ft	Yes
13	Garage	19'6" x 22'1"	431 sq. ft	No
14	WC	4'5" x 4'0"	18 sq. ft	Yes

Home report

15237 Apricot Lane, Quince Orchard Knolls, North Potomac,  
Montgomery County, Maryland, United States, 20878



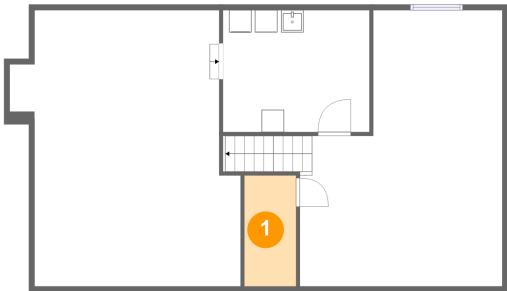
Room dimensions

Floor 3 Total:725sqft   Excluded: 0sqft

#		Max Dimensions	sqft	Included
15	Bedroom	12'2" x 8'11"	108 sq. ft	Yes
16	Primary Bedroom	13'9" x 13'2"	175 sq. ft	Yes
17	Bath	9'0" x 4'9"	39 sq. ft	Yes
18	W.I.C.	8'10" x 6'6"	58 sq. ft	Yes
19	Bedroom	8'9" x 11'11"	105 sq. ft	Yes
20	Bath	7'2" x 8'7"	62 sq. ft	Yes
21	Hall	7'10" x 9'7"	57 sq. ft	Yes

15237 Apricot Lane, Quince Orchard Knolls, North Potomac,  
Montgomery County, Maryland, United States, 20878

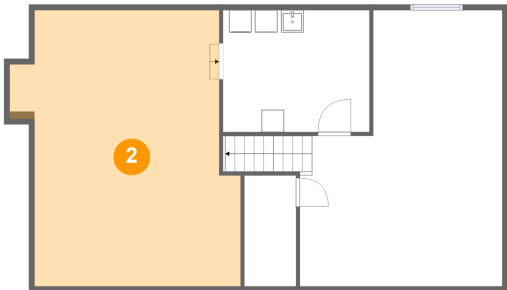
1 Floor 1 - Storage



Max Dimensions: 4'8" x 9'11"  
Calculated Area: 46 sq. ft  
Included: No

Heated: No  
Finished: Yes  
Enclosed: No  
Contiguous: Yes  
Permitted: Yes  
Wet space: No  
Addition: No  
Conversion: No

2 Floor 1 - Sitting Room



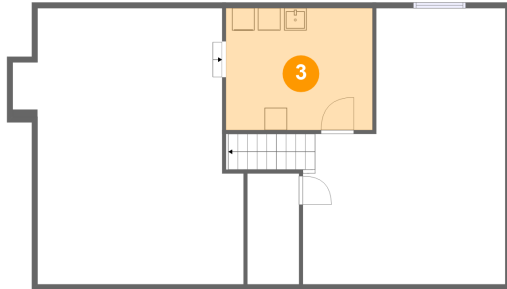
Max Dimensions: 18'8" x 24'7"  
Calculated Area: 437 sq. ft  
Included: Yes

Heated: Yes  
Finished: Yes  
Enclosed: Yes  
Contiguous: Yes  
Permitted: Yes  
Wet space: No  
Addition: No  
Conversion: No

## Home report

15237 Apricot Lane, Quince Orchard Knolls, North Potomac,  
Montgomery County, Maryland, United States, 20878

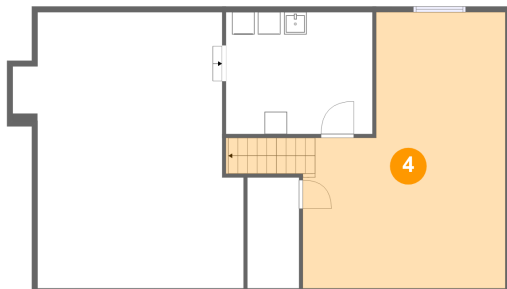
### 3 Floor 1 - Utility



Max Dimensions: 13'1" x 10'11"  
Calculated Area: 143 sq. ft  
Included: Yes

Heated: Yes  
Finished: Yes  
Enclosed: Yes  
Contiguous: Yes  
Permitted: Yes  
Wet space: No  
Addition: No  
Conversion: No

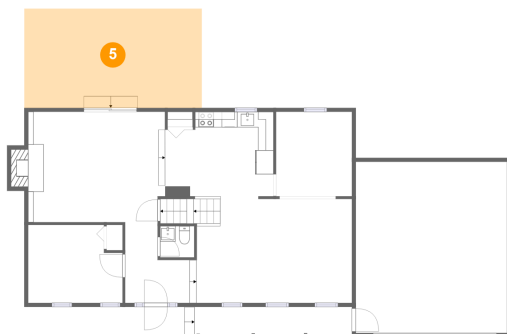
### 4 Floor 1 - Recreation Room



Max Dimensions: 18'1" x 24'8"  
Calculated Area: 394 sq. ft  
Included: Yes

Heated: Yes  
Finished: Yes  
Enclosed: Yes  
Contiguous: Yes  
Permitted: Yes  
Wet space: No  
Addition: No  
Conversion: No

### 5 Floor 2 - Patio

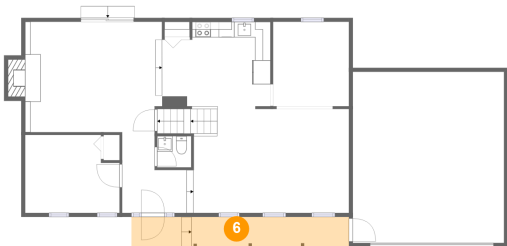


Max Dimensions: 22'11" x 12'9"  
Calculated Area: 294 sq. ft  
Included: No

Heated: No  
Finished: Yes  
Enclosed: No  
Contiguous: Yes  
Permitted: Yes  
Wet space: No  
Addition: No  
Conversion: No

15237 Apricot Lane, Quince Orchard Knolls, North Potomac,  
Montgomery County, Maryland, United States, 20878

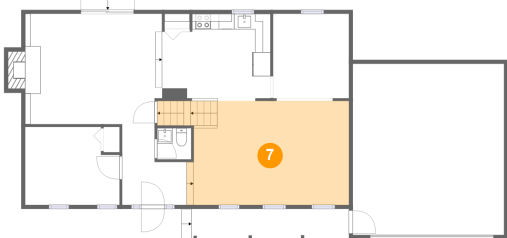
6 Floor 2 - Porch



Max Dimensions: 28'1" x 3'10"  
Calculated Area: 108 sq. ft  
Included: No

Heated: No  
Finished: Yes  
Enclosed: No  
Contiguous: Yes  
Permitted: Yes  
Wet space: No  
Addition: No  
Conversion: No

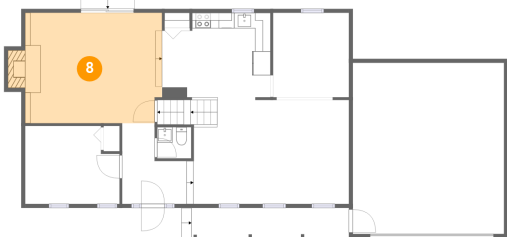
7 Floor 2 - Living Room



Max Dimensions: 20'0" x 13'5"  
Calculated Area: 289 sq. ft  
Included: Yes

Heated: Yes  
Finished: Yes  
Enclosed: Yes  
Contiguous: Yes  
Permitted: Yes  
Wet space: No  
Addition: No  
Conversion: No

8 Floor 2 - Family Room



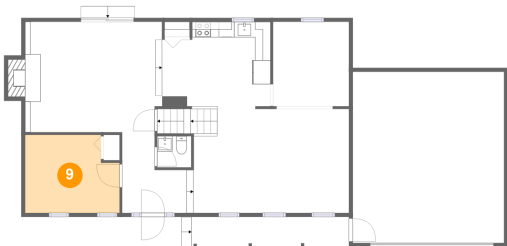
Max Dimensions: 17'8" x 14'3"  
Calculated Area: 259 sq. ft  
Included: Yes

Heated: Yes  
Finished: Yes  
Enclosed: Yes  
Contiguous: Yes  
Permitted: Yes  
Wet space: No  
Addition: No  
Conversion: No



15237 Apricot Lane, Quince Orchard Knolls, North Potomac,  
Montgomery County, Maryland, United States, 20878

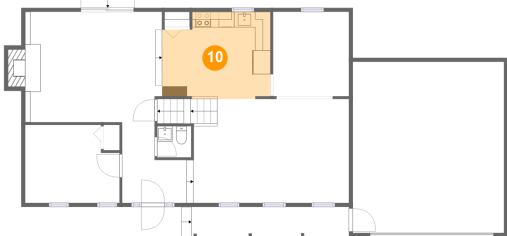
9 Floor 2 - Bedroom



Max Dimensions: 12'2" x 10'1"  
Calculated Area: 114 sq. ft  
Included: Yes

Heated: Yes  
Finished: Yes  
Enclosed: Yes  
Contiguous: Yes  
Permitted: Yes  
Wet space: No  
Addition: No  
Conversion: No

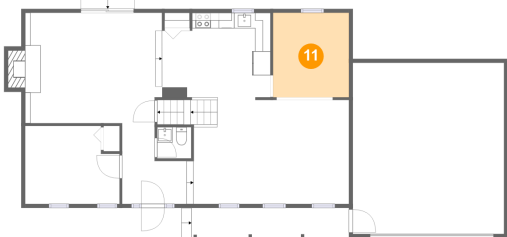
10 Floor 2 - Kitchen



Max Dimensions: 14'0" x 11'3"  
Calculated Area: 146 sq. ft  
Included: Yes

Heated: Yes  
Finished: Yes  
Enclosed: Yes  
Contiguous: Yes  
Permitted: Yes  
Wet space: No  
Addition: No  
Conversion: No

11 Floor 2 - Dining Room

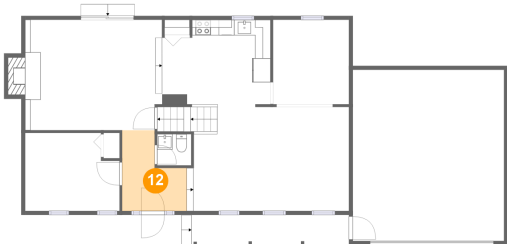


Max Dimensions: 9'10" x 10'11"  
Calculated Area: 107 sq. ft  
Included: Yes

Heated: Yes  
Finished: Yes  
Enclosed: Yes  
Contiguous: Yes  
Permitted: Yes  
Wet space: No  
Addition: No  
Conversion: No

15237 Apricot Lane, Quince Orchard Knolls, North Potomac,  
Montgomery County, Maryland, United States, 20878

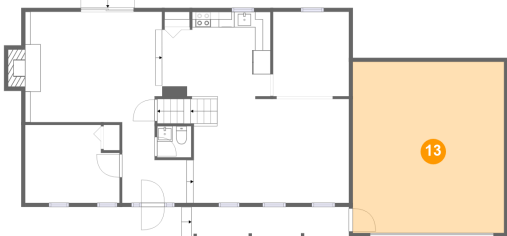
12 Floor 2 - Foyer



Max Dimensions: 8'4" x 10'5"  
Calculated Area: 67 sq. ft  
Included: Yes

Heated: Yes  
Finished: Yes  
Enclosed: Yes  
Contiguous: Yes  
Permitted: Yes  
Wet space: No  
Addition: No  
Conversion: No

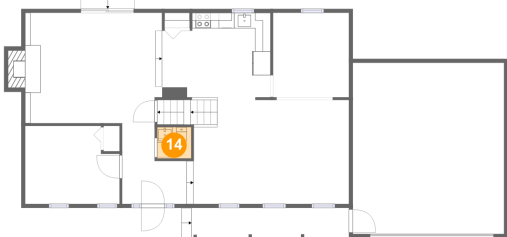
13 Floor 2 - Garage



Max Dimensions: 19'6" x 22'1"  
Calculated Area: 431 sq. ft  
Included: No

Heated: No  
Finished: Yes  
Enclosed: Yes  
Contiguous: Yes  
Permitted: Yes  
Wet space: No  
Addition: No  
Conversion: No

14 Floor 2 - WC

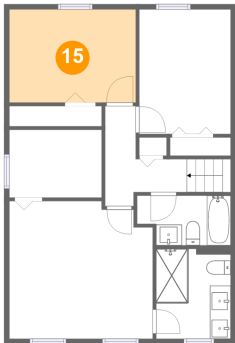


Max Dimensions: 4'5" x 4'0"  
Calculated Area: 18 sq. ft  
Included: Yes

Heated: Yes  
Finished: Yes  
Enclosed: Yes  
Contiguous: Yes  
Permitted: Yes  
Wet space: Yes  
Addition: No  
Conversion: No

15237 Apricot Lane, Quince Orchard Knolls, North Potomac,  
Montgomery County, Maryland, United States, 20878

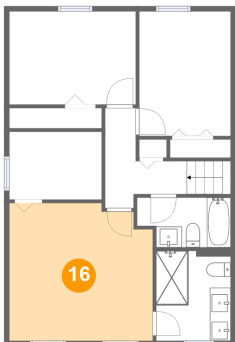
15 Floor 3 - Bedroom



Max Dimensions: 12'2" x 8'11"  
Calculated Area: 108 sq. ft  
Included: Yes

Heated: Yes  
Finished: Yes  
Enclosed: Yes  
Contiguous: Yes  
Permitted: Yes  
Wet space: No  
Addition: No  
Conversion: No

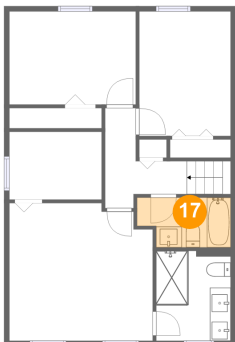
16 Floor 3 - Primary Bedroom



Max Dimensions: 13'9" x 13'2"  
Calculated Area: 175 sq. ft  
Included: Yes

Heated: Yes  
Finished: Yes  
Enclosed: Yes  
Contiguous: Yes  
Permitted: Yes  
Wet space: No  
Addition: No  
Conversion: No

17 Floor 3 - Bath

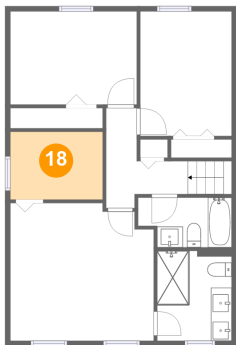


Max Dimensions: 9'0" x 4'9"  
Calculated Area: 39 sq. ft  
Included: Yes

Heated: Yes  
Finished: Yes  
Enclosed: Yes  
Contiguous: Yes  
Permitted: Yes  
Wet space: Yes  
Addition: No  
Conversion: No

15237 Apricot Lane, Quince Orchard Knolls, North Potomac,  
Montgomery County, Maryland, United States, 20878

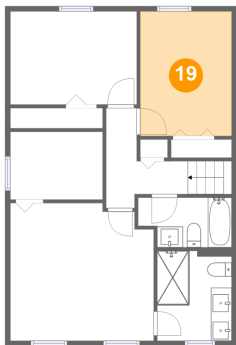
18 Floor 3 - W.I.C.



Max Dimensions: 8'10" x 6'6"  
Calculated Area: 58 sq. ft  
Included: Yes

Heated: Yes  
Finished: Yes  
Enclosed: Yes  
Contiguous: Yes  
Permitted: Yes  
Wet space: No  
Addition: No  
Conversion: No

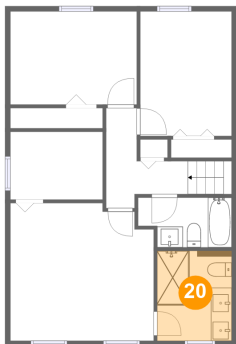
19 Floor 3 - Bedroom



Max Dimensions: 8'9" x 11'11"  
Calculated Area: 105 sq. ft  
Included: Yes

Heated: Yes  
Finished: Yes  
Enclosed: Yes  
Contiguous: Yes  
Permitted: Yes  
Wet space: No  
Addition: No  
Conversion: No

20 Floor 3 - Bath

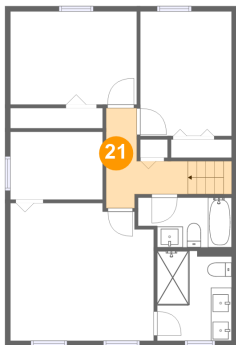


Max Dimensions: 7'2" x 8'7"  
Calculated Area: 62 sq. ft  
Included: Yes

Heated: Yes  
Finished: Yes  
Enclosed: Yes  
Contiguous: Yes  
Permitted: Yes  
Wet space: Yes  
Addition: No  
Conversion: No

15237 Apricot Lane, Quince Orchard Knolls, North Potomac,  
Montgomery County, Maryland, United States, 20878

21 Floor 3 - Hall



Max Dimensions: 7'10" x 9'7"  
Calculated Area: 57 sq. ft  
Included: Yes

Heated: Yes  
Finished: Yes  
Enclosed: Yes  
Contiguous: Yes  
Permitted: Yes  
Wet space: No  
Addition: No  
Conversion: No