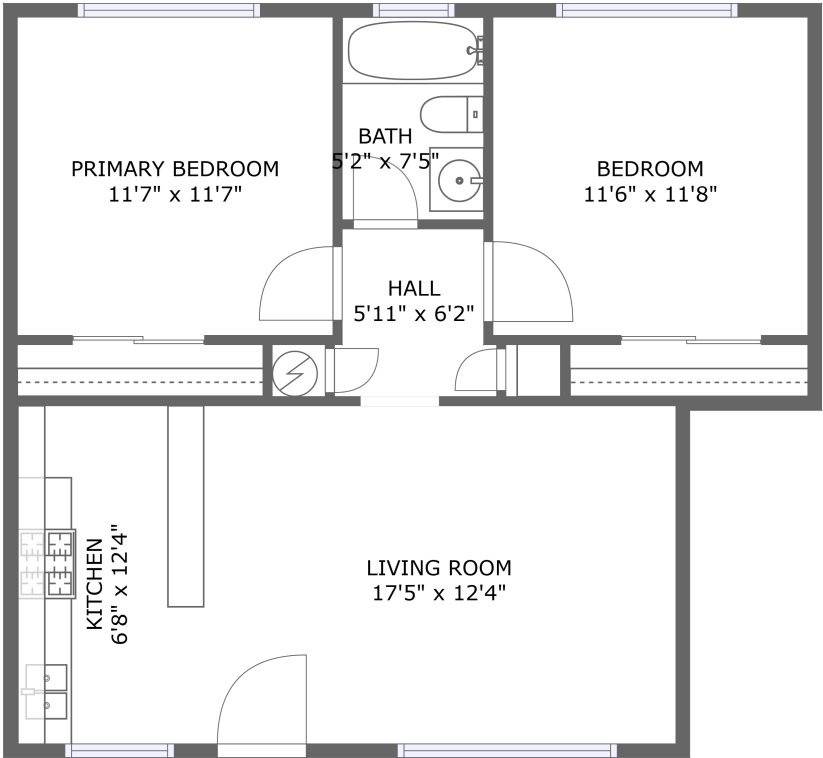


Home report

1738 Roosevelt Ave #2, Los Angeles, CA, US



FLOOR 1


Total Area: 707 sq. ft

Floor 1: 707 sq. ft

Excluded: Walls: 0 sq. ft

Property summary

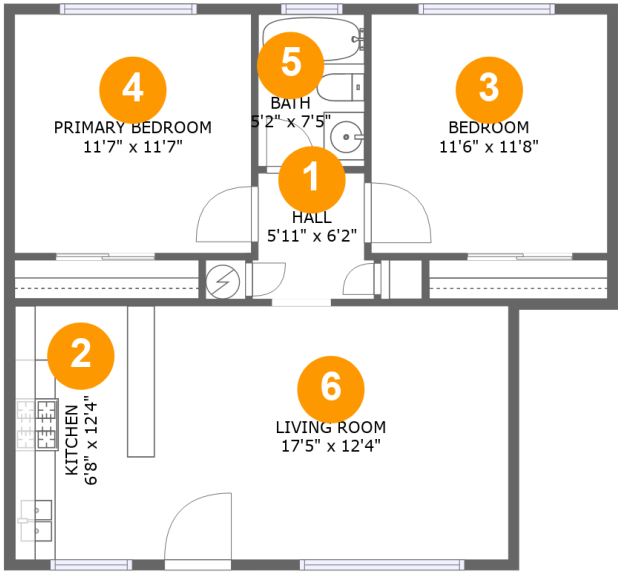
 1 Floors

 2 Bedrooms

 1 Bathrooms

Home report

1738 Roosevelt Ave #2,Los Angeles,CA,US

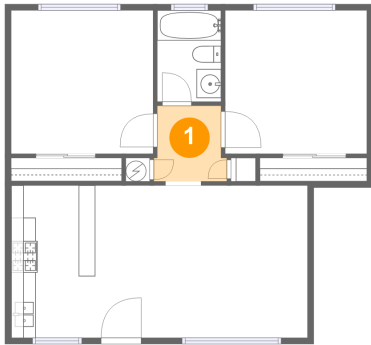


Room dimensions

Floor 1 Total:707sqft Excluded: 0sqft

#		Max Dimensions	sqft	Included
1	Hall	5'11" x 6'2"	33 sq. ft	Yes
2	Kitchen	6'8" x 12'4"	83 sq. ft	Yes
3	Bedroom	11'6" x 11'8"	134 sq. ft	Yes
4	Primary Bedroom	11'7" x 11'7"	134 sq. ft	Yes
5	Bath	5'2" x 7'5"	38 sq. ft	Yes
6	Living Room	17'5" x 12'4"	215 sq. ft	Yes

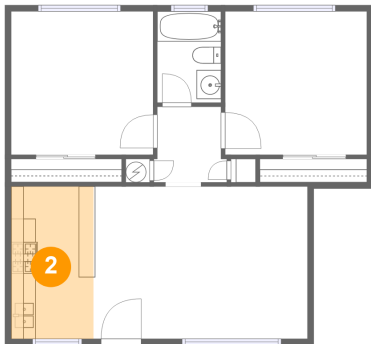
1 Floor 1 - Hall



Max Dimensions: 5'11" x 6'2"
Calculated Area: 33 sq. ft
Included: Yes

Heated: Yes
Finished: Yes
Enclosed: Yes
Contiguous: Yes
Permitted: Yes
Wet space: No
Addition: No
Conversion: No

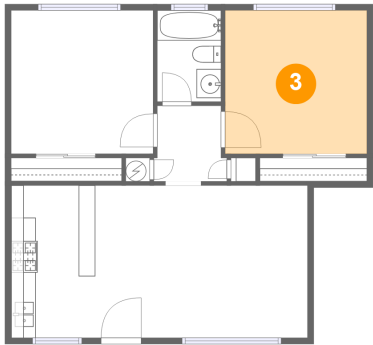
2 Floor 1 - Kitchen



Max Dimensions: 6'8" x 12'4"
Calculated Area: 83 sq. ft
Included: Yes

Heated: Yes
Finished: Yes
Enclosed: Yes
Contiguous: Yes
Permitted: Yes
Wet space: No
Addition: No
Conversion: No

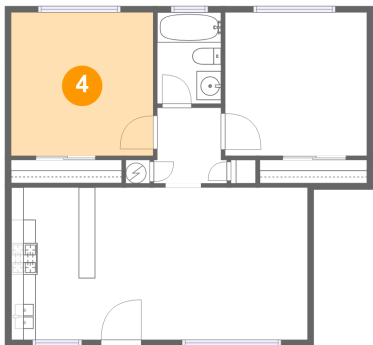
3 Floor 1 - Bedroom



Max Dimensions: 11'6" x 11'8"
Calculated Area: 134 sq. ft
Included: Yes

Heated: Yes
Finished: Yes
Enclosed: Yes
Contiguous: Yes
Permitted: Yes
Wet space: No
Addition: No
Conversion: No

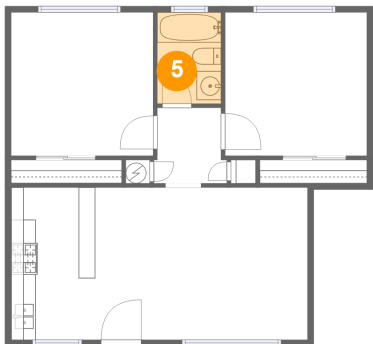
4 Floor 1 - Primary Bedroom



Max Dimensions: 11'7" x 11'7"
Calculated Area: 134 sq. ft
Included: Yes

Heated: Yes
Finished: Yes
Enclosed: Yes
Contiguous: Yes
Permitted: Yes
Wet space: No
Addition: No
Conversion: No

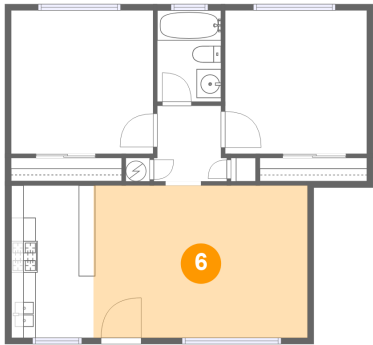
5 Floor 1 - Bath



Max Dimensions: 5'2" x 7'5"
Calculated Area: 38 sq. ft
Included: Yes

Heated: Yes
Finished: Yes
Enclosed: Yes
Contiguous: Yes
Permitted: Yes
Wet space: Yes
Addition: No
Conversion: No

6 Floor 1 - Living Room



Max Dimensions: 17'5" x 12'4"
Calculated Area: 215 sq. ft
Included: Yes

Heated: Yes
Finished: Yes
Enclosed: Yes
Contiguous: Yes
Permitted: Yes
Wet space: No
Addition: No
Conversion: No