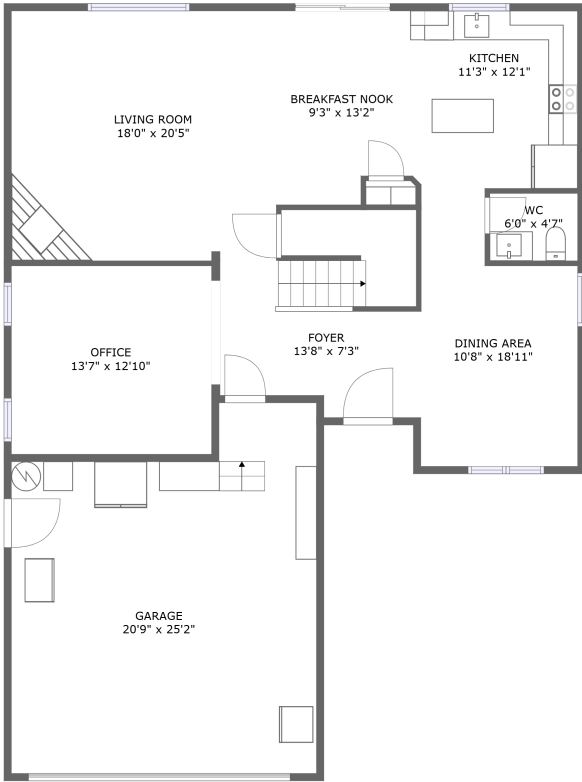
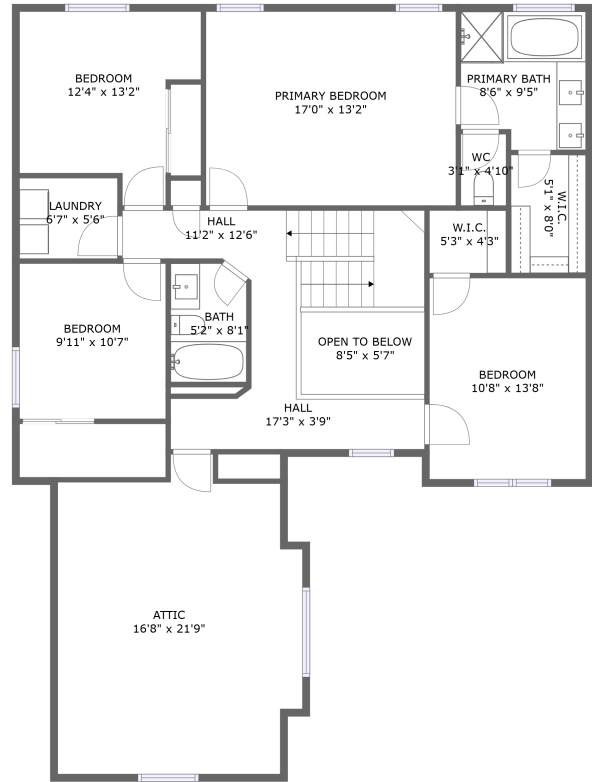


16506 Northeast Pacific Drive, Wilkes East, Portland, Multnomah County, Oregon, United



FLOOR 1




FLOOR 2

Property Summary

 **1** garages

 **4** bedrooms

 **2** bathrooms

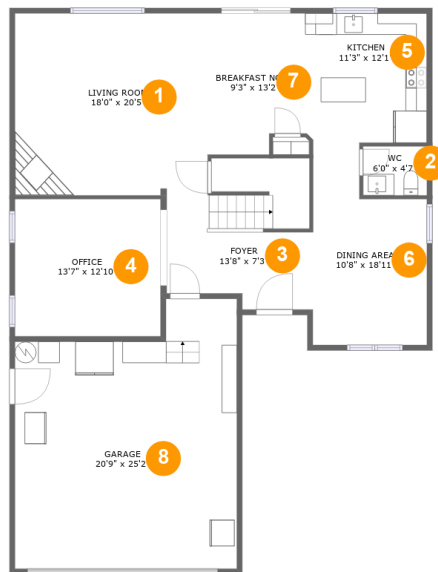
 **1** half baths

 **2** floors

 **2,415** Gross Living Area sqft

 **3,311** total sqft

16506 Northeast Pacific Drive, Wilkes East, Portland, Multnomah County, Oregon, United



Room Dimensions

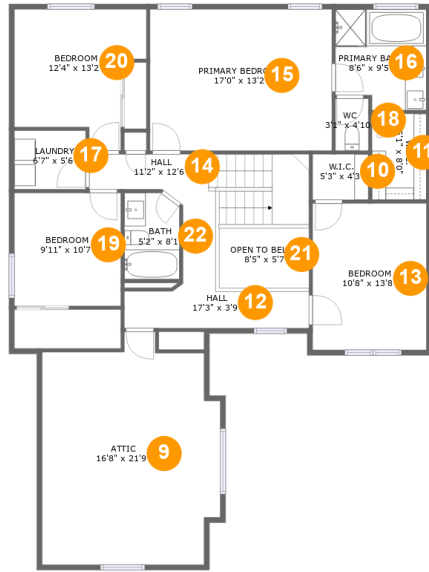
Floor 1

Total sqft: 1695

Living area: 1196

| # | Room name | Dimensions | Area (sqft) | Counted as Living Area |
|---|----------------|----------------|-------------|------------------------|
| 1 | Living Room | 18'0" x 20'5" | 380 sq. ft | Yes |
| 2 | Wc | 6'0" x 4'7" | 27 sq. ft | Yes |
| 3 | Foyer | 13'8" x 7'3" | 88 sq. ft | Yes |
| 4 | Office | 13'7" x 12'10" | 174 sq. ft | Yes |
| 5 | Kitchen | 11'3" x 12'1" | 135 sq. ft | Yes |
| 6 | Dining Area | 10'8" x 18'11" | 168 sq. ft | Yes |
| 7 | Breakfast Nook | 9'3" x 13'2" | 115 sq. ft | Yes |
| 8 | Garage | 20'9" x 25'2" | 466 sq. ft | No |

16506 Northeast Pacific Drive, Wilkes East, Portland, Multnomah County, Oregon, United



Room Dimensions

Floor 2

Total sqft: 1616

Living area: 1219

| # | Room name | Dimensions | Area (sqft) | Counted as Living Area |
|----|-----------------|---------------|-------------|------------------------|
| 9 | Attic | 16'8" x 21'9" | 258 sq. ft | No |
| 10 | W.i.c. | 5'3" x 4'3" | 22 sq. ft | Yes |
| 11 | W.i.c. | 5'1" x 8'0" | 41 sq. ft | Yes |
| 12 | Hall | 17'3" x 3'9" | 63 sq. ft | Yes |
| 13 | Bedroom | 10'8" x 13'8" | 145 sq. ft | Yes |
| 14 | Hall | 11'2" x 12'6" | 130 sq. ft | Yes |
| 15 | Primary Bedroom | 17'0" x 13'2" | 224 sq. ft | Yes |
| 16 | Primary Bath | 8'6" x 9'5" | 75 sq. ft | Yes |
| 17 | Laundry | 6'7" x 5'6" | 36 sq. ft | Yes |
| 18 | Wc | 3'1" x 4'10" | 15 sq. ft | Yes |
| 19 | Bedroom | 9'11" x 10'7" | 105 sq. ft | Yes |

Scan captured on Mon, 08 Jul 2024 17:38:05 GMT

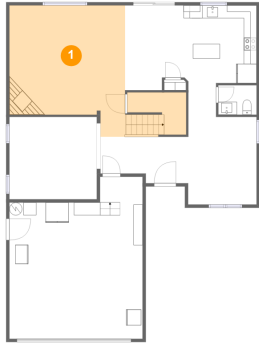
Information is calculated by CubiCasa technology; deemed highly reliable but not guaranteed.

**16506 Northeast Pacific Drive, Wilkes East,
Portland, Multnomah County, Oregon, United**

| # | Room name | Dimensions | Area (sqft) | Counted as Living Area |
|----|---------------|---------------|-------------|------------------------|
| 20 | Bedroom | 12'4" x 13'2" | 127 sq. ft | Yes |
| 21 | Open To Below | 8'5" x 5'7" | 47 sq. ft | No |
| 22 | Bath | 5'2" x 8'1" | 40 sq. ft | Yes |

16506 Northeast Pacific Drive, Wilkes East, Portland, Multnomah County, Oregon, United

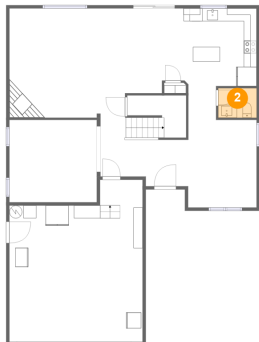
1 Floor 1 - Living Room



Dimensions: 18'0" x 20'5"
Area: 380 sq. ft
Counted as Living Area:
Yes

Heated: Yes
Finished: Yes
Enclosed: Yes
Contiguous:
Yes
Permitted: Yes
Wet Space: No
Addition: No
Conversion: No

2 Floor 1 - Wc

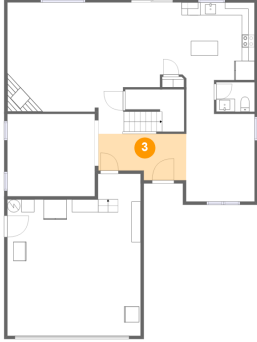


Dimensions: 6'0" x 4'7"
Area: 27 sq. ft
Counted as Living Area:
Yes

Heated: Yes
Finished: Yes
Enclosed: Yes
Contiguous:
Yes
Permitted: Yes
Wet Space: Yes
Addition: No
Conversion: No

16506 Northeast Pacific Drive, Wilkes East, Portland, Multnomah County, Oregon, United

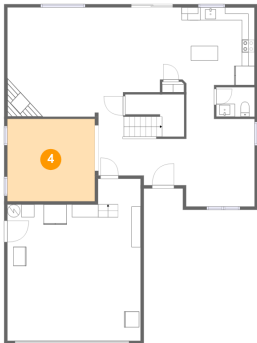
3 Floor 1 - Foyer



Dimensions: 13'8" x 7'3"
Area: 88 sq. ft
Counted as Living Area:
Yes

Heated: Yes
Finished: Yes
Enclosed: Yes
Contiguous:
Yes
Permitted: Yes
Wet Space: No
Addition: No
Conversion: No

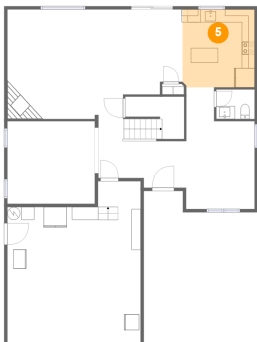
4 Floor 1 - Office



Dimensions: 13'7" x 12'10"
Area: 174 sq. ft
Counted as Living Area:
Yes

Heated: Yes
Finished: Yes
Enclosed: Yes
Contiguous:
Yes
Permitted: Yes
Wet Space: No
Addition: No
Conversion: No

5 Floor 1 - Kitchen

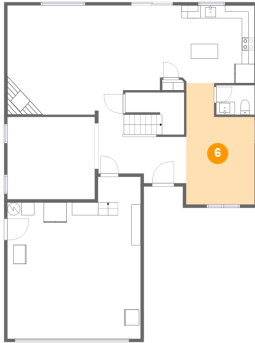


Dimensions: 11'3" x 12'1"
Area: 135 sq. ft
Counted as Living Area:
Yes

Heated: Yes
Finished: Yes
Enclosed: Yes
Contiguous:
Yes
Permitted: Yes
Wet Space: No
Addition: No
Conversion: No

16506 Northeast Pacific Drive, Wilkes East, Portland, Multnomah County, Oregon, United

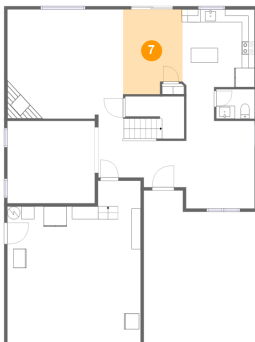
6 Floor 1 - Dining Area



Dimensions: 10'8" x 18'11"
Area: 168 sq. ft
Counted as Living Area:
Yes

Heated: Yes
Finished: Yes
Enclosed: Yes
Contiguous:
Yes
Permitted: Yes
Wet Space: No
Addition: No
Conversion: No

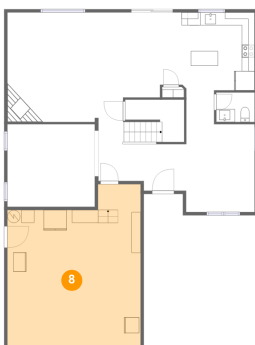
7 Floor 1 - Breakfast Nook



Dimensions: 9'3" x 13'2"
Area: 115 sq. ft
Counted as Living Area:
Yes

Heated: Yes
Finished: Yes
Enclosed: Yes
Contiguous:
Yes
Permitted: Yes
Wet Space: No
Addition: No
Conversion: No

8 Floor 1 - Garage

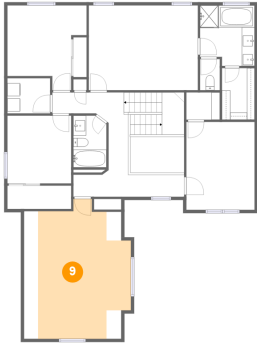


Dimensions: 20'9" x 25'2"
Area: 466 sq. ft
Counted as Living Area: No

Heated: No
Finished: No
Enclosed: Yes
Contiguous: Yes
Permitted: Yes
Wet Space: No
Addition: No
Conversion: No

16506 Northeast Pacific Drive, Wilkes East, Portland, Multnomah County, Oregon, United

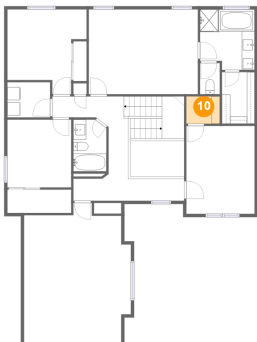
9 Floor 2 - Attic



Dimensions: 16'8" x 21'9"
Area: 258 sq. ft
Counted as Living Area: No

Heated: No
Finished: Yes
Enclosed: Yes
Contiguous: Yes
Permitted: Yes
Wet Space: No
Addition: No
Conversion: No

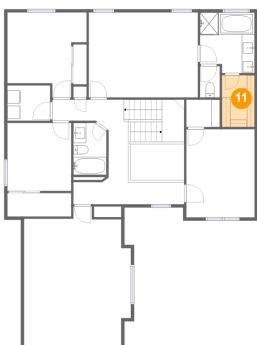
10 Floor 2 - W.i.c.



Dimensions: 5'3" x 4'3"
Area: 22 sq. ft
Counted as Living Area:
Yes

Heated: Yes
Finished: Yes
Enclosed: Yes
Contiguous:
Yes
Permitted: Yes
Wet Space: No
Addition: No
Conversion: No

11 Floor 2 - W.i.c.

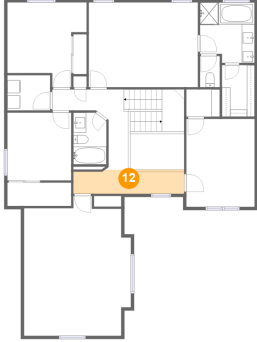


Dimensions: 5'1" x 8'0"
Area: 41 sq. ft
Counted as Living Area:
Yes

Heated: Yes
Finished: Yes
Enclosed: Yes
Contiguous:
Yes
Permitted: Yes
Wet Space: No
Addition: No
Conversion: No

16506 Northeast Pacific Drive, Wilkes East, Portland, Multnomah County, Oregon, United

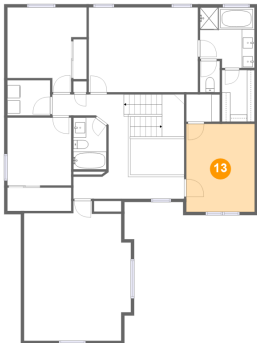
12 Floor 2 - Hall



Dimensions: 17'3" x 3'9"
Area: 63 sq. ft
Counted as Living Area:
Yes

Heated: Yes
Finished: Yes
Enclosed: Yes
Contiguous:
Yes
Permitted: Yes
Wet Space: No
Addition: No
Conversion: No

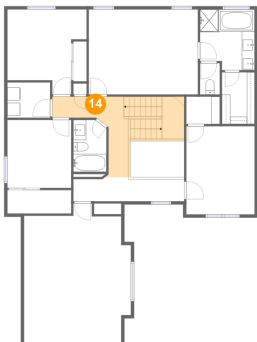
13 Floor 2 - Bedroom



Dimensions: 10'8" x 13'8"
Area: 145 sq. ft
Counted as Living Area:
Yes

Heated: Yes
Finished: Yes
Enclosed: Yes
Contiguous:
Yes
Permitted: Yes
Wet Space: No
Addition: No
Conversion: No

14 Floor 2 - Hall

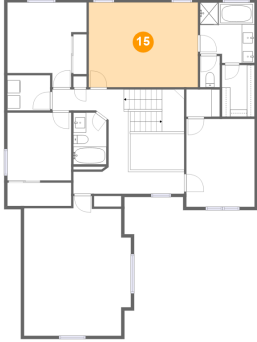


Dimensions: 11'2" x 12'6"
Area: 130 sq. ft
Counted as Living Area:
Yes

Heated: Yes
Finished: Yes
Enclosed: Yes
Contiguous:
Yes
Permitted: Yes
Wet Space: No
Addition: No
Conversion: No

16506 Northeast Pacific Drive, Wilkes East, Portland, Multnomah County, Oregon, United

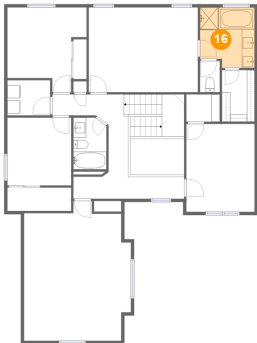
15 Floor 2 - Primary Bedroom



Dimensions: 17'0" x 13'2"
Area: 224 sq. ft
Counted as Living Area:
Yes

Heated: Yes
Finished: Yes
Enclosed: Yes
Contiguous:
Yes
Permitted: Yes
Wet Space: No
Addition: No
Conversion: No

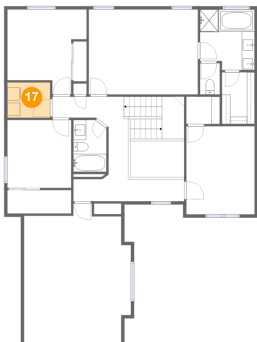
16 Floor 2 - Primary Bath



Dimensions: 8'6" x 9'5"
Area: 75 sq. ft
Counted as Living Area:
Yes

Heated: Yes
Finished: Yes
Enclosed: Yes
Contiguous:
Yes
Permitted: Yes
Wet Space: Yes
Addition: No
Conversion: No

17 Floor 2 - Laundry

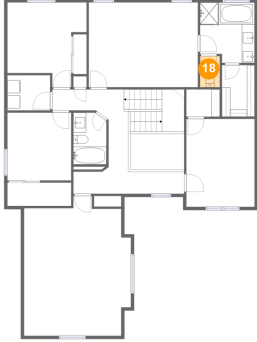


Dimensions: 6'7" x 5'6"
Area: 36 sq. ft
Counted as Living Area:
Yes

Heated: Yes
Finished: Yes
Enclosed: Yes
Contiguous:
Yes
Permitted: Yes
Wet Space: No
Addition: No
Conversion: No

16506 Northeast Pacific Drive, Wilkes East, Portland, Multnomah County, Oregon, United

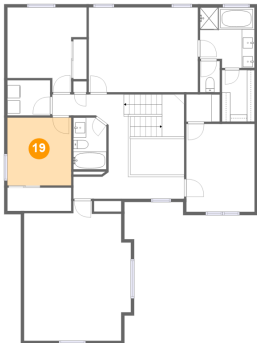
18 Floor 2 - Wc



Dimensions: 3'1" x 4'10"
Area: 15 sq. ft
Counted as Living Area:
Yes

Heated: Yes
Finished: Yes
Enclosed: Yes
Contiguous:
Yes
Permitted: Yes
Wet Space: Yes
Addition: No
Conversion: No

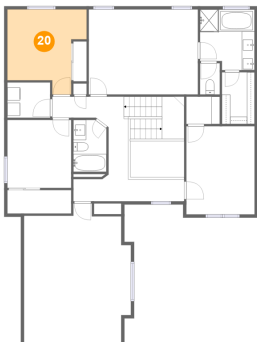
19 Floor 2 - Bedroom



Dimensions: 9'11" x 10'7"
Area: 105 sq. ft
Counted as Living Area:
Yes

Heated: Yes
Finished: Yes
Enclosed: Yes
Contiguous:
Yes
Permitted: Yes
Wet Space: No
Addition: No
Conversion: No

20 Floor 2 - Bedroom

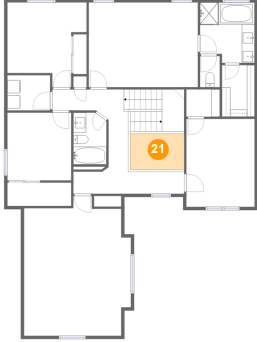


Dimensions: 12'4" x 13'2"
Area: 127 sq. ft
Counted as Living Area:
Yes

Heated: Yes
Finished: Yes
Enclosed: Yes
Contiguous:
Yes
Permitted: Yes
Wet Space: No
Addition: No
Conversion: No

16506 Northeast Pacific Drive, Wilkes East, Portland, Multnomah County, Oregon, United

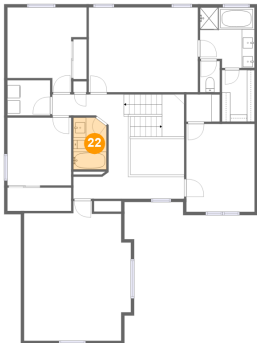
21 Floor 2 - Open To Below



Dimensions: 8'5" x 5'7"
Area: 47 sq. ft
Counted as Living Area: No

Heated: No
Finished: No
Enclosed: No
Contiguous: Yes
Permitted: No
Wet Space: No
Addition: No
Conversion: No

22 Floor 2 - Bath



Dimensions: 5'2" x 8'1"
Area: 40 sq. ft
Counted as Living Area:
Yes

Heated: Yes
Finished: Yes
Enclosed: Yes
Contiguous:
Yes
Permitted: Yes
Wet Space: Yes
Addition: No
Conversion: No