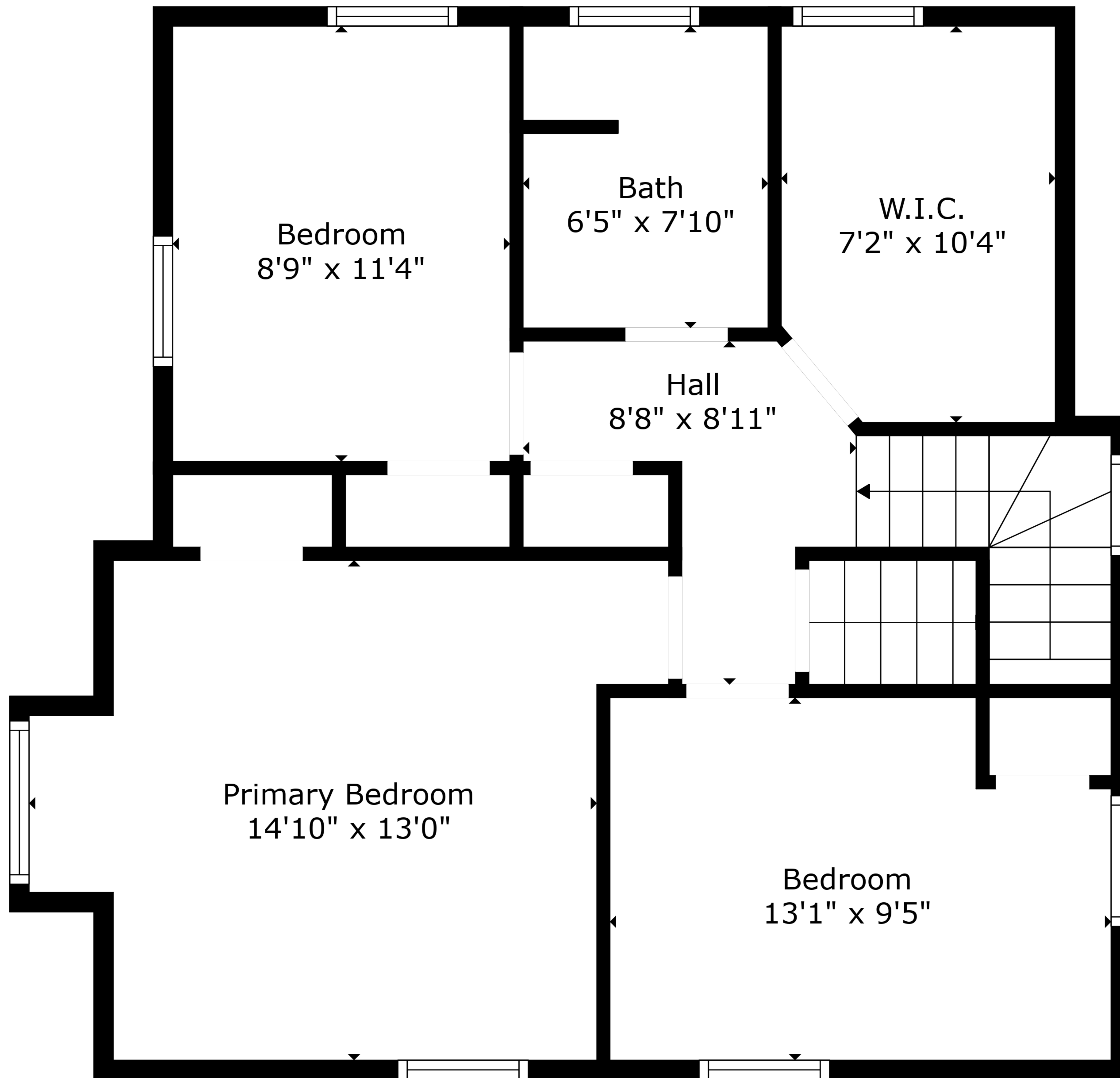


TOTAL: 2093 sq. ft

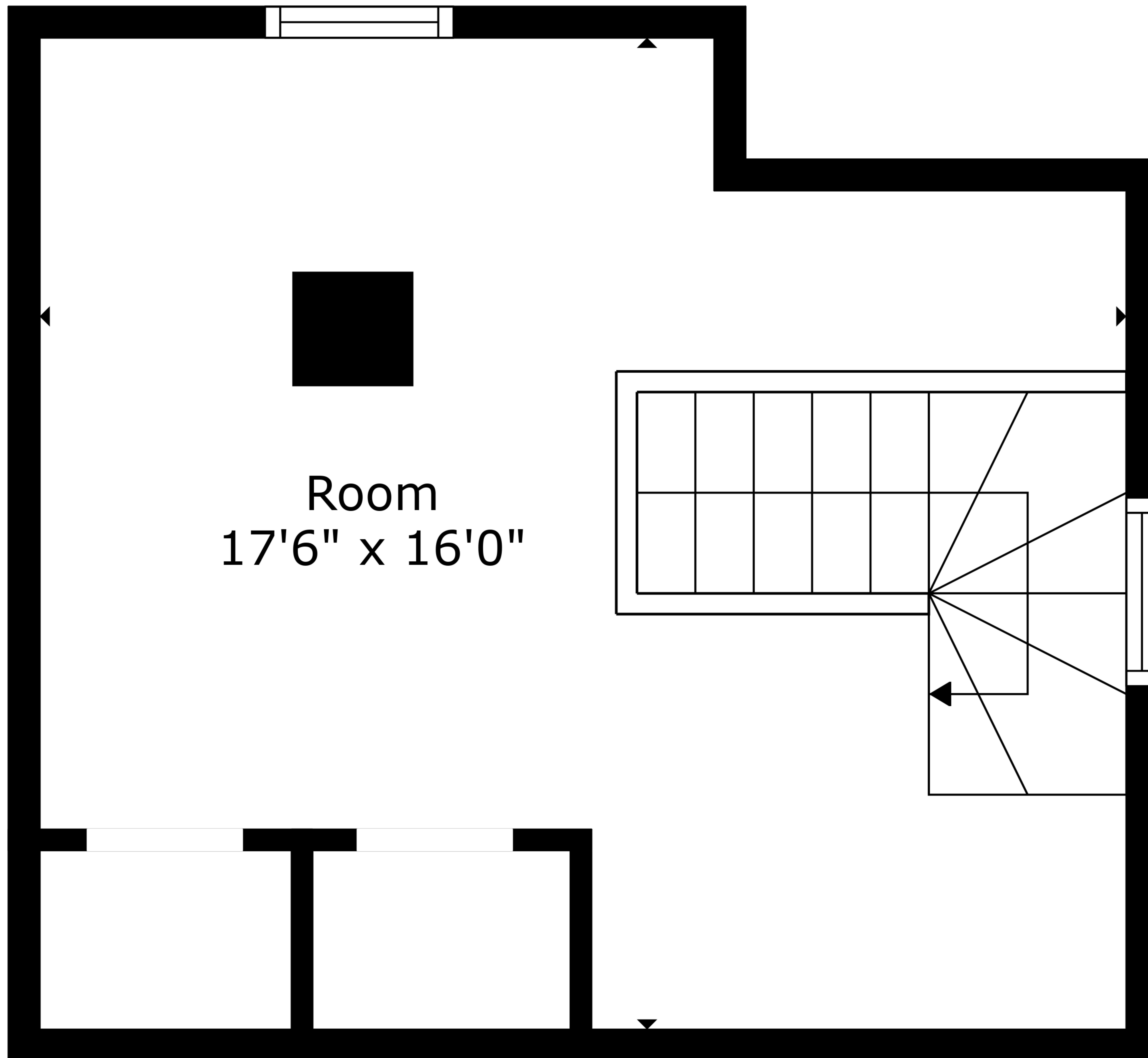
FLOOR 1: 1230 sq. ft, FLOOR 2: 673 sq. ft, FLOOR 3: 190 sq. ft
EXCLUDED AREAS: LOW CEILING: 73 sq. ft

Sizes And Dimensions Are Approximate. Actual May Vary.



TOTAL: 2093 sq. ft
FLOOR 1: 1230 sq. ft, FLOOR 2: 673 sq. ft, FLOOR 3: 190 sq. ft
EXCLUDED AREAS: LOW CEILING: 73 sq. ft

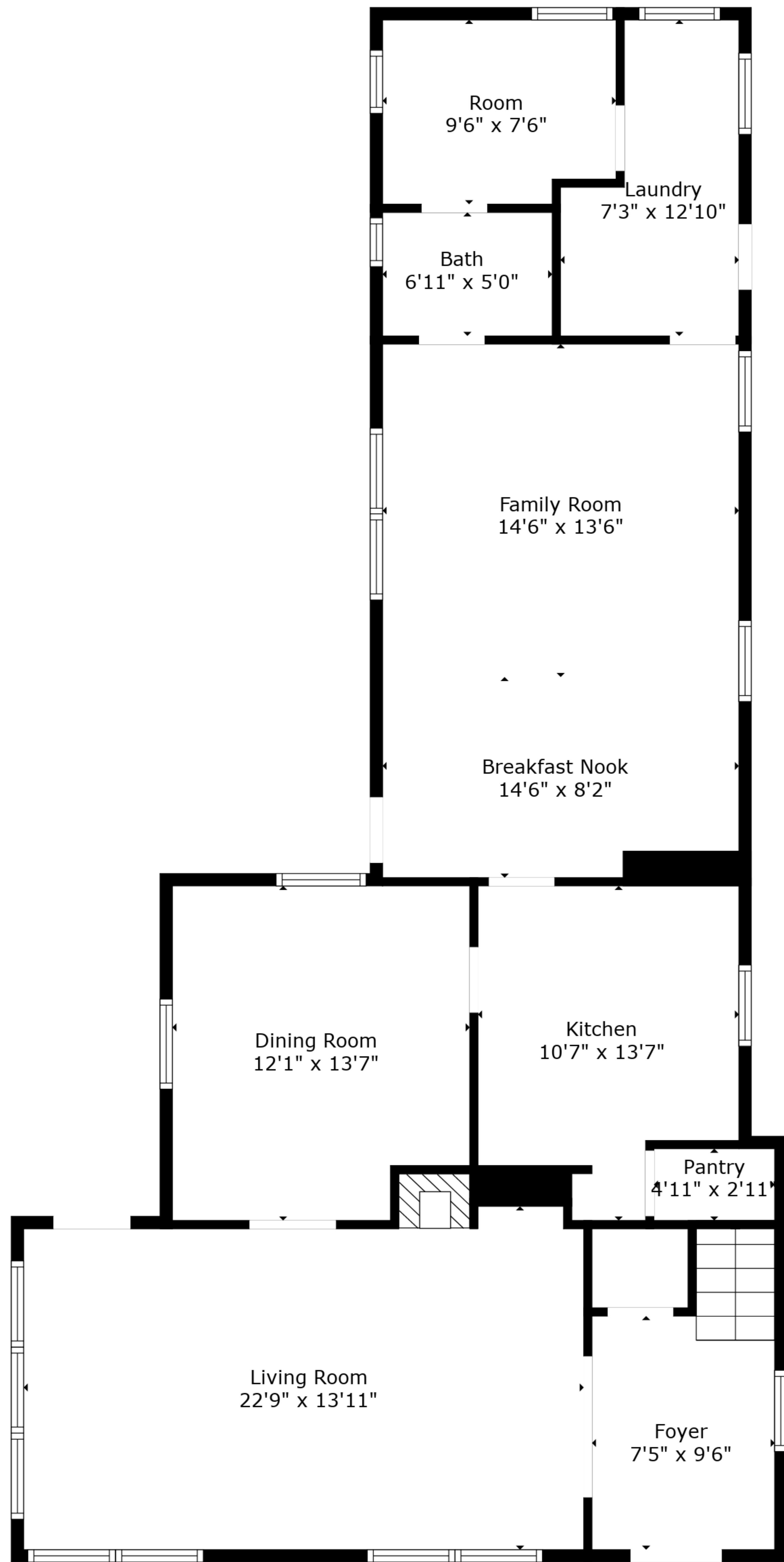
Sizes And Dimensions Are Approximate. Actual May Vary.



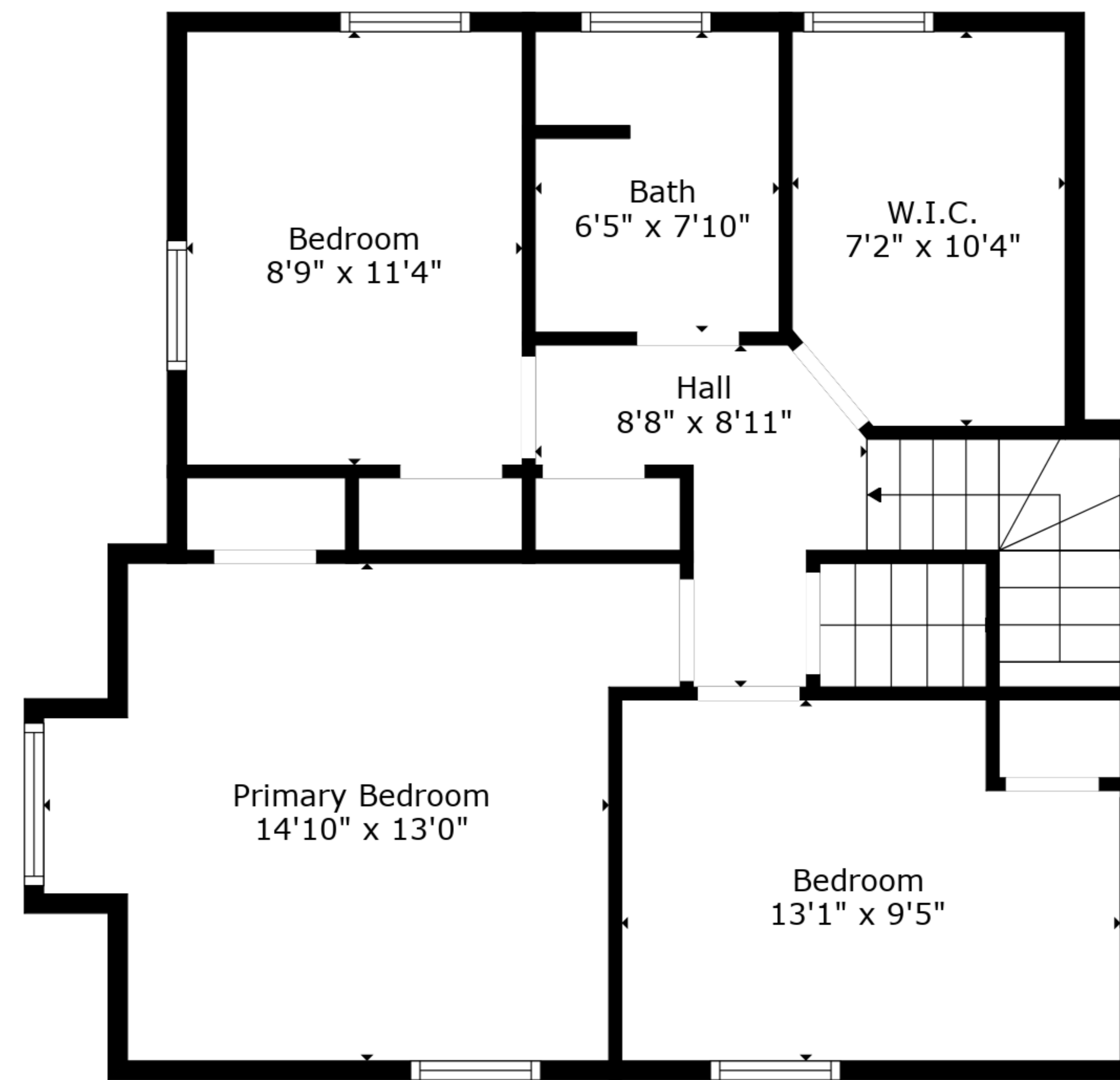
Room
17'6" x 16'0"

TOTAL: 2093 sq. ft
FLOOR 1: 1230 sq. ft, FLOOR 2: 673 sq. ft, FLOOR 3: 190 sq. ft
EXCLUDED AREAS: LOW CEILING: 73 sq. ft

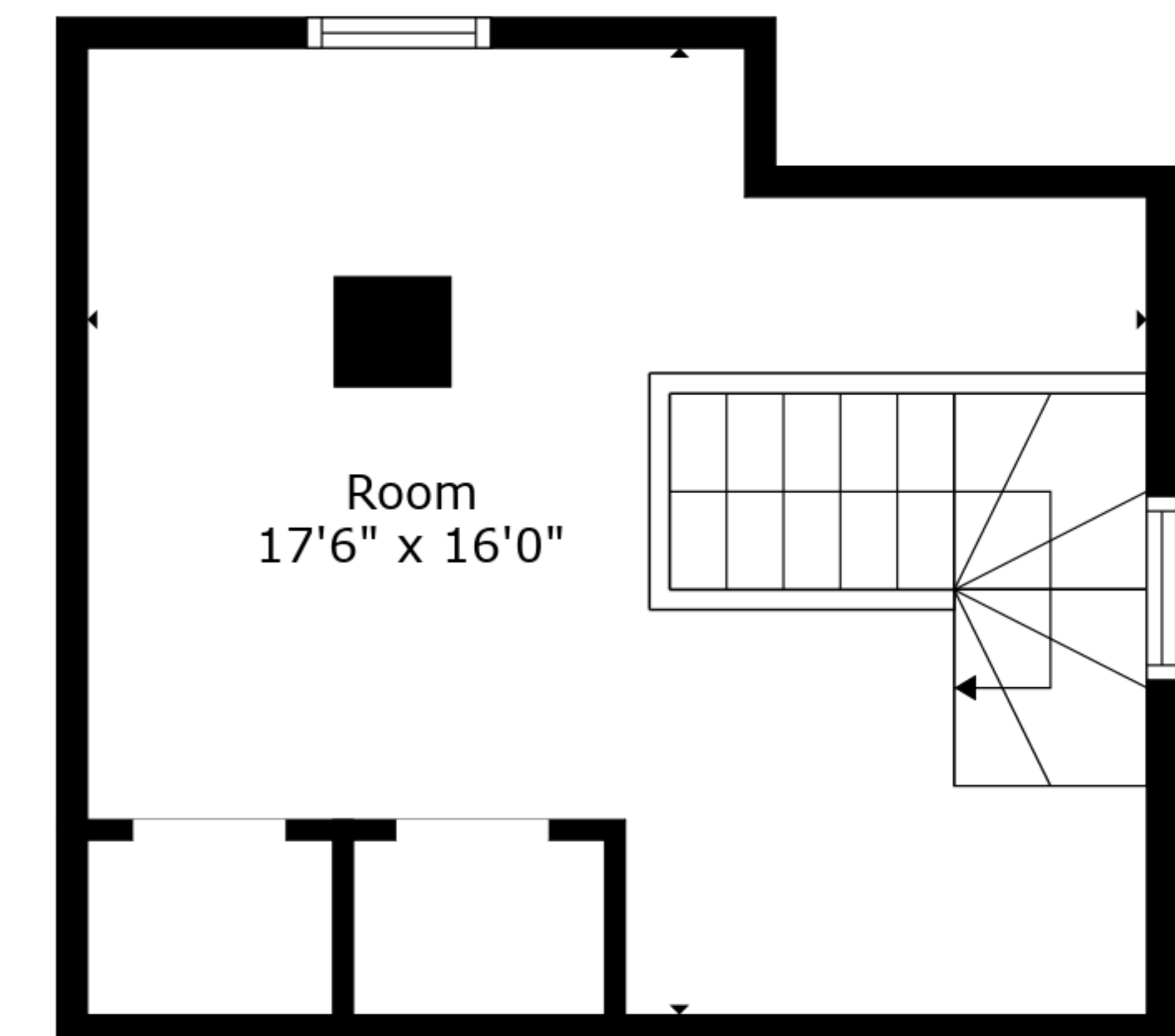
Sizes And Dimensions Are Approximate. Actual May Vary.



Floor 1



Floor 2



Floor 3

TOTAL: 2093 sq. ft
 FLOOR 1: 1230 sq. ft, FLOOR 2: 673 sq. ft, FLOOR 3: 190 sq. ft
 EXCLUDED AREAS: LOW CEILING: 73 sq. ft

Sizes And Dimensions Are Approximate. Actual May Vary.