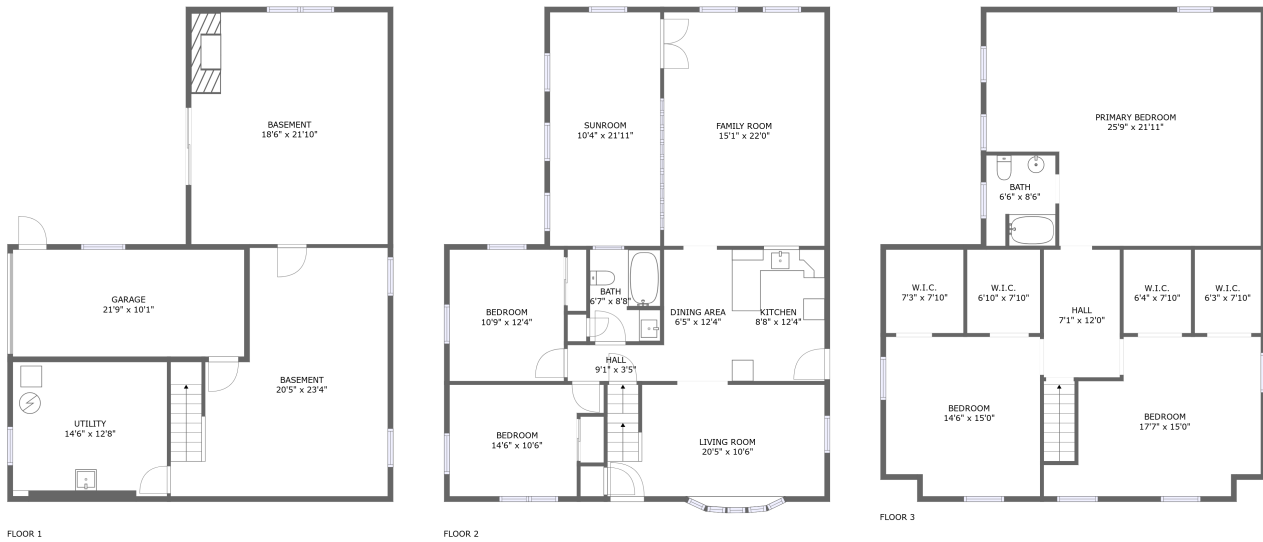



# 1018 Nissley Road, Lancaster, Pennsylvania 17601, United States



## Property Summary

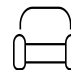
 **3** floors

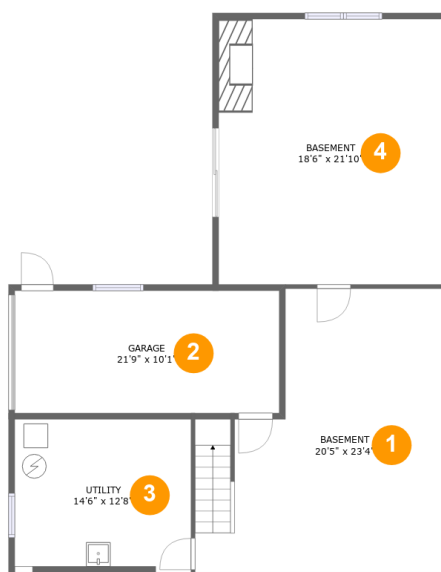
 **5** bedrooms

 **2** bathrooms

 **4,253** total sqft

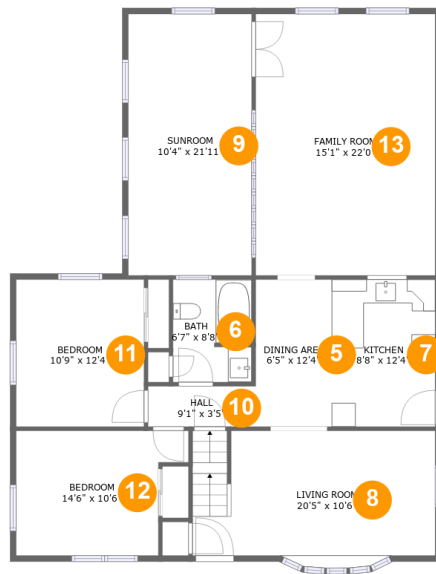
 **1** garages

 **2,912** Gross Living Area sqft

**1018 Nissley Road, Lancaster, Pennsylvania  
17601, United States****Room Dimensions****Floor 1****Total sqft: 1310****Living area: 0**

#	Room name	Dimensions	Area (sqft)	Counted as Living Area
1	Basement	20'5" x 23'4"	397 sq. ft	No
2	Garage	21'9" x 10'1"	219 sq. ft	No
3	Utility	14'6" x 12'8"	178 sq. ft	No
4	Basement	18'6" x 21'10"	403 sq. ft	No

# 1018 Nissley Road, Lancaster, Pennsylvania 17601, United States



## Room Dimensions

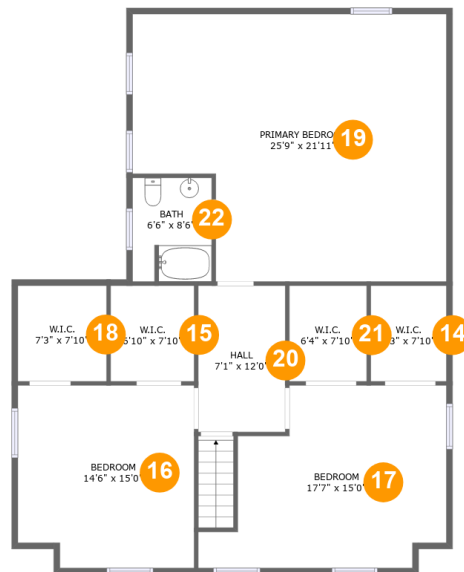
Floor 2

Total sqft: 1482

Living area: 1482

#	Room name	Dimensions	Area (sqft)	Counted as Living Area
5	Dining Area	6'5" x 12'4"	79 sq. ft	Yes
6	Bath	6'7" x 8'8"	56 sq. ft	Yes
7	Kitchen	8'8" x 12'4"	108 sq. ft	Yes
8	Living Room	20'5" x 10'6"	220 sq. ft	Yes
9	Sunroom	10'4" x 21'11"	228 sq. ft	Yes
10	Hall	9'1" x 3'5"	31 sq. ft	Yes
11	Bedroom	10'9" x 12'4"	133 sq. ft	Yes
12	Bedroom	14'6" x 10'6"	132 sq. ft	Yes
13	Family Room	15'1" x 22'0"	332 sq. ft	Yes

# 1018 Nissley Road, Lancaster, Pennsylvania 17601, United States



## Room Dimensions

Floor 3

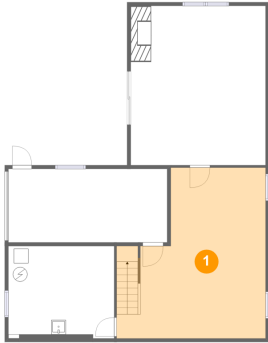
Total sqft: 1461

Living area: 1430

#	Room name	Dimensions	Area (sqft)	Counted as Living Area
14	W.i.c.	6'3" x 7'10"	49 sq. ft	Yes
15	W.i.c.	6'10" x 7'10"	54 sq. ft	Yes
16	Bedroom	14'6" x 15'0"	197 sq. ft	Yes
17	Bedroom	17'7" x 15'0"	234 sq. ft	Yes
18	W.i.c.	7'3" x 7'10"	57 sq. ft	Yes
19	Primary Bedroom	25'9" x 21'11"	506 sq. ft	Yes
20	Hall	7'1" x 12'0"	86 sq. ft	Yes
21	W.i.c.	6'4" x 7'10"	50 sq. ft	Yes
22	Bath	6'6" x 8'6"	54 sq. ft	Yes

# 1018 Nissley Road, Lancaster, Pennsylvania 17601, United States

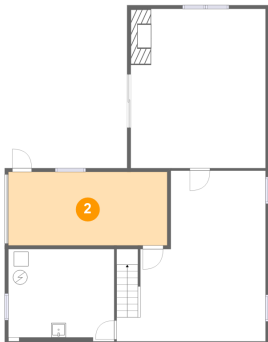
## 1 Floor 1 - Basement



Dimensions: 20'5" x 23'4"  
Area: 397 sq. ft  
Counted as Living Area: No

Heated: No  
Finished: Yes  
Enclosed: Yes  
Contiguous: Yes  
Permitted: Yes  
Wet Space: No  
Addition: No  
Conversion: No

## 2 Floor 1 - Garage

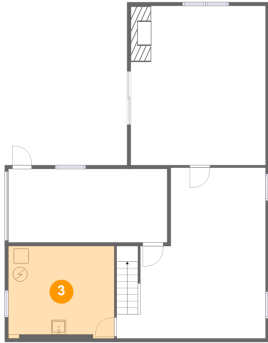


Dimensions: 21'9" x 10'1"  
Area: 219 sq. ft  
Counted as Living Area: No

Heated: No  
Finished: No  
Enclosed: Yes  
Contiguous: Yes  
Permitted: Yes  
Wet Space: No  
Addition: No  
Conversion: No

# 1018 Nissley Road, Lancaster, Pennsylvania 17601, United States

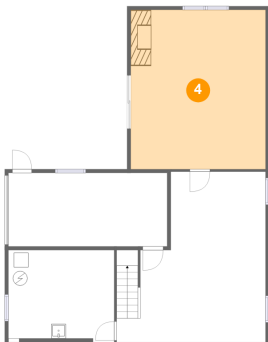
## 3 Floor 1 - Utility



Dimensions: 14'6" x 12'8"  
Area: 178 sq. ft  
Counted as Living Area: No

Heated: Yes  
Finished: No  
Enclosed: Yes  
Contiguous: Yes  
Permitted: Yes  
Wet Space: No  
Addition: No  
Conversion: No

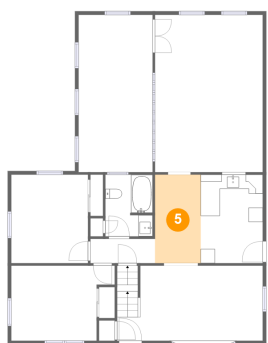
## 4 Floor 1 - Basement



Dimensions: 18'6" x 21'10"  
Area: 403 sq. ft  
Counted as Living Area: No

Heated: No  
Finished: Yes  
Enclosed: Yes  
Contiguous: Yes  
Permitted: Yes  
Wet Space: No  
Addition: No  
Conversion: No

## 5 Floor 2 - Dining Area

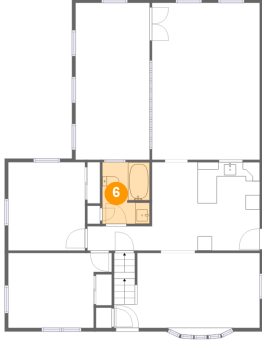


Dimensions: 6'5" x 12'4"  
Area: 79 sq. ft  
Counted as Living Area: Yes

Heated: Yes  
Finished: Yes  
Enclosed: Yes  
Contiguous: Yes  
Permitted: Yes  
Wet Space: No  
Addition: No  
Conversion: No

# 1018 Nissley Road, Lancaster, Pennsylvania 17601, United States

## 6 Floor 2 - Bath



Dimensions: 6'7" x 8'8"  
Area: 56 sq. ft  
Counted as Living Area:  
Yes

Heated: Yes  
Finished: Yes  
Enclosed: Yes  
Contiguous:  
Yes  
Permitted: Yes  
Wet Space: Yes  
Addition: No  
Conversion: No

## 7 Floor 2 - Kitchen



Dimensions: 8'8" x 12'4"  
Area: 108 sq. ft  
Counted as Living Area:  
Yes

Heated: Yes  
Finished: Yes  
Enclosed: Yes  
Contiguous:  
Yes  
Permitted: Yes  
Wet Space: No  
Addition: No  
Conversion: No

## 8 Floor 2 - Living Room

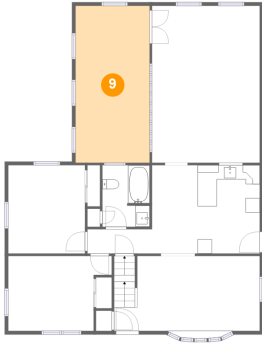


Dimensions: 20'5" x 10'6"  
Area: 220 sq. ft  
Counted as Living Area:  
Yes

Heated: Yes  
Finished: Yes  
Enclosed: Yes  
Contiguous:  
Yes  
Permitted: Yes  
Wet Space: No  
Addition: No  
Conversion: No

# 1018 Nissley Road, Lancaster, Pennsylvania 17601, United States

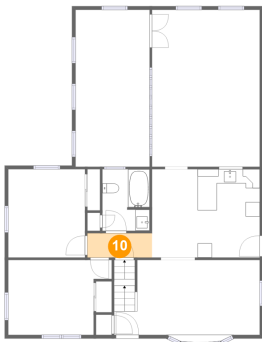
## 9 Floor 2 - Sunroom



Dimensions: 10'4" x 21'11"  
Area: 228 sq. ft  
Counted as Living Area:  
Yes

Heated: Yes  
Finished: Yes  
Enclosed: Yes  
Contiguous:  
Yes  
Permitted: Yes  
Wet Space: No  
Addition: No  
Conversion: No

## 10 Floor 2 - Hall



Dimensions: 9'1" x 3'5"  
Area: 31 sq. ft  
Counted as Living Area:  
Yes

Heated: Yes  
Finished: Yes  
Enclosed: Yes  
Contiguous:  
Yes  
Permitted: Yes  
Wet Space: No  
Addition: No  
Conversion: No

## 11 Floor 2 - Bedroom



Dimensions: 10'9" x 12'4"  
Area: 133 sq. ft  
Counted as Living Area:  
Yes

Heated: Yes  
Finished: Yes  
Enclosed: Yes  
Contiguous:  
Yes  
Permitted: Yes  
Wet Space: No  
Addition: No  
Conversion: No



**1018 Nissley Road, Lancaster, Pennsylvania  
17601, United States**

**12 Floor 2 - Bedroom**



**Dimensions:** 14'6" x 10'6"  
**Area:** 132 sq. ft  
**Counted as Living Area:**  
Yes

**Heated:** Yes  
**Finished:** Yes  
**Enclosed:** Yes  
**Contiguous:**  
Yes  
**Permitted:** Yes  
**Wet Space:** No  
**Addition:** No  
**Conversion:** No

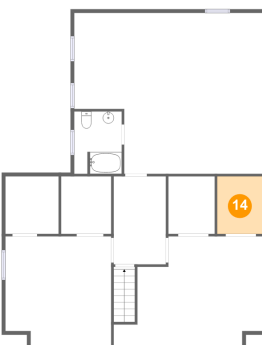
**13 Floor 2 - Family Room**



**Dimensions:** 15'1" x 22'0"  
**Area:** 332 sq. ft  
**Counted as Living Area:**  
Yes

**Heated:** Yes  
**Finished:** Yes  
**Enclosed:** Yes  
**Contiguous:**  
Yes  
**Permitted:** Yes  
**Wet Space:** No  
**Addition:** No  
**Conversion:** No

**14 Floor 3 - W.i.c.**

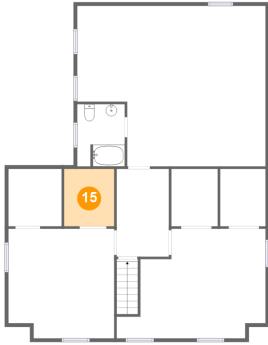


**Dimensions:** 6'3" x 7'10"  
**Area:** 49 sq. ft  
**Counted as Living Area:**  
Yes

**Heated:** Yes  
**Finished:** Yes  
**Enclosed:** Yes  
**Contiguous:**  
Yes  
**Permitted:** Yes  
**Wet Space:** No  
**Addition:** No  
**Conversion:** No

# 1018 Nissley Road, Lancaster, Pennsylvania 17601, United States

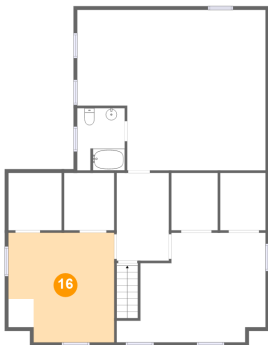
## 15 Floor 3 - W.i.c.



Dimensions: 6'10" x 7'10"  
Area: 54 sq. ft  
Counted as Living Area:  
Yes

Heated: Yes  
Finished: Yes  
Enclosed: Yes  
Contiguous:  
Yes  
Permitted: Yes  
Wet Space: No  
Addition: No  
Conversion: No

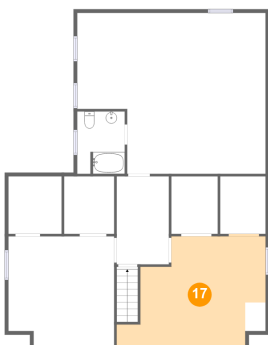
## 16 Floor 3 - Bedroom



Dimensions: 14'6" x 15'0"  
Area: 197 sq. ft  
Counted as Living Area:  
Yes

Heated: Yes  
Finished: Yes  
Enclosed: Yes  
Contiguous:  
Yes  
Permitted: Yes  
Wet Space: No  
Addition: No  
Conversion: No

## 17 Floor 3 - Bedroom

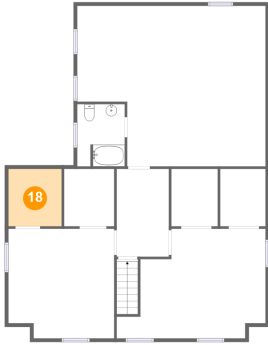


Dimensions: 17'7" x 15'0"  
Area: 234 sq. ft  
Counted as Living Area:  
Yes

Heated: Yes  
Finished: Yes  
Enclosed: Yes  
Contiguous:  
Yes  
Permitted: Yes  
Wet Space: No  
Addition: No  
Conversion: No

# 1018 Nissley Road, Lancaster, Pennsylvania 17601, United States

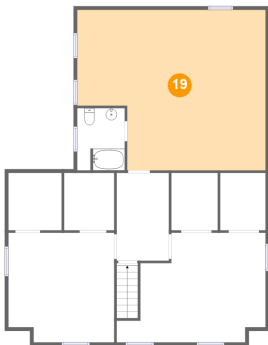
## 18 Floor 3 - W.i.c.



Dimensions: 7'3" x 7'10"  
Area: 57 sq. ft  
Counted as Living Area:  
Yes

Heated: Yes  
Finished: Yes  
Enclosed: Yes  
Contiguous:  
Yes  
Permitted: Yes  
Wet Space: No  
Addition: No  
Conversion: No

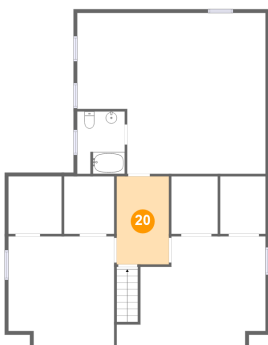
## 19 Floor 3 - Primary Bedroom



Dimensions: 25'9" x 21'11"  
Area: 506 sq. ft  
Counted as Living Area:  
Yes

Heated: Yes  
Finished: Yes  
Enclosed: Yes  
Contiguous:  
Yes  
Permitted: Yes  
Wet Space: No  
Addition: No  
Conversion: No

## 20 Floor 3 - Hall

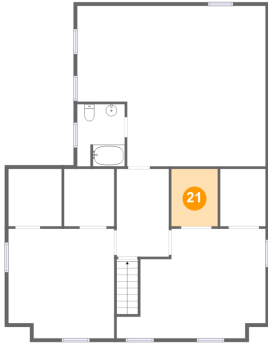


Dimensions: 7'1" x 12'0"  
Area: 86 sq. ft  
Counted as Living Area:  
Yes

Heated: Yes  
Finished: Yes  
Enclosed: Yes  
Contiguous:  
Yes  
Permitted: Yes  
Wet Space: No  
Addition: No  
Conversion: No

**1018 Nissley Road, Lancaster, Pennsylvania  
17601, United States**

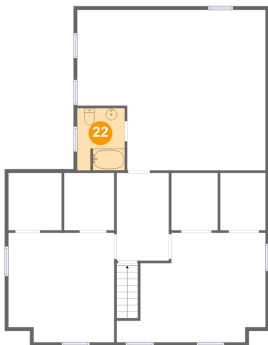
**21 Floor 3 - W.i.c.**



Dimensions: 6'4" x 7'10"  
Area: 50 sq. ft  
Counted as Living Area:  
Yes

Heated: Yes  
Finished: Yes  
Enclosed: Yes  
Contiguous:  
Yes  
Permitted: Yes  
Wet Space: No  
Addition: No  
Conversion: No

**22 Floor 3 - Bath**



Dimensions: 6'6" x 8'6"  
Area: 54 sq. ft  
Counted as Living Area:  
Yes

Heated: Yes  
Finished: Yes  
Enclosed: Yes  
Contiguous:  
Yes  
Permitted: Yes  
Wet Space: Yes  
Addition: No  
Conversion: No