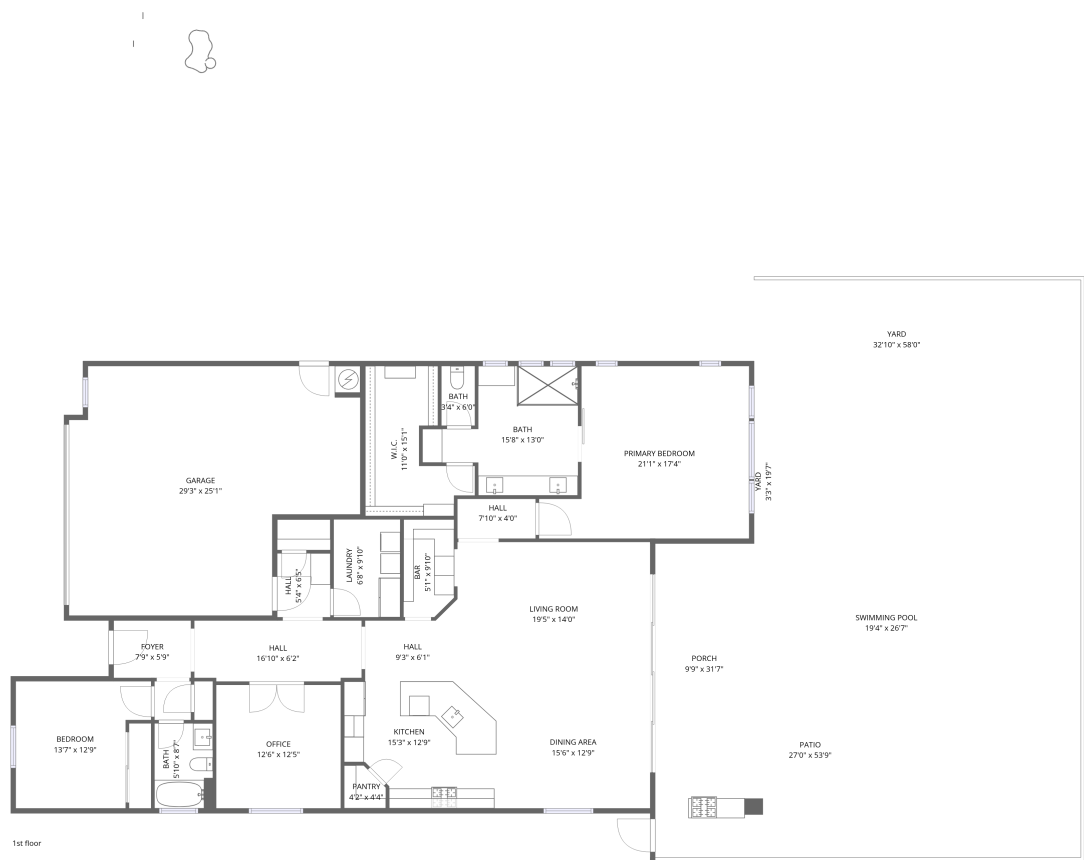


Home data report

5853 N 207th Ave,Buckeye,AZ,US



Total Area: 2139 sq. ft

1st Floor: 2139 sq. ft


Excluded: Garage 633 sq. ft, Patio 658 sq. ft, Porch 307 sq. ft, Walls: 153 sq. ft

Property summary

 **1** Floors

 **2** Bedrooms

 **2** Bathrooms

 **1** Garages

Home data report

5853 N 207th Ave,Buckeye,AZ,US



Room dimensions

Floor 1 Total:2139sqft Excluded: 1598sqft

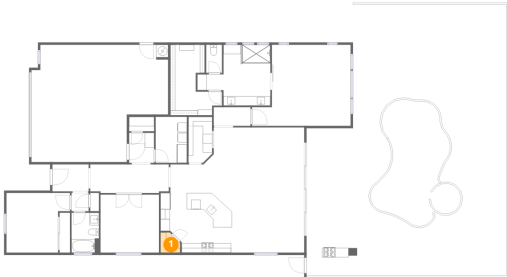
#		Dimensions	sqft	Counted as living area
1	Pantry	4'2" x 4'4"	16 sq. ft	Yes
2	Bar	5'1" x 9'10"	49 sq. ft	Yes
3	Bath	15'8" x 13'0"	150 sq. ft	Yes
4	Foyer	7'9" x 5'9"	45 sq. ft	Yes
5	Bedroom	13'7" x 12'9"	151 sq. ft	Yes
6	Garage	29'3" x 25'1"	633 sq. ft	No
7	Hall	7'10" x 4'0"	31 sq. ft	Yes
8	Porch	9'9" x 31'7"	307 sq. ft	No
9	Bath	5'10" x 8'7"	50 sq. ft	Yes
10	Kitchen	15'3" x 12'9"	177 sq. ft	Yes
11	Patio	27'0" x 53'9"	995 sq. ft	No

Home data report

5853 N 207th Ave,Buckeye,AZ,US

#		Dimensions	sqft	Counted as living area
12	Hall	9'3" x 6'1"	59 sq. ft	Yes
13	Office	12'6" x 12'5"	156 sq. ft	Yes
14	W.I.C.	11'0" x 15'1"	117 sq. ft	Yes
15	Primary Bedroom	21'1" x 17'4"	310 sq. ft	Yes
16	Bath	3'4" x 6'0"	20 sq. ft	Yes
17	Yard	32'10" x 58'0"	871 sq. ft	No
18	Living Room	19'5" x 14'0"	272 sq. ft	Yes
19	Laundry	6'8" x 9'10"	66 sq. ft	Yes
20	Hall	5'4" x 6'5"	34 sq. ft	Yes
21	Swimming Pool	19'4" x 26'7"	336 sq. ft	No
22	Hall	16'10" x 6'2"	102 sq. ft	Yes
23	Dining Area	15'6" x 12'9"	198 sq. ft	Yes
24	Yard	3'3" x 19'7"	48 sq. ft	No

1 Floor 1 - Pantry



Dimensions: 4'2" x 4'4"
Area: 16 sq. ft
Counted as living area: Yes

Heated: Yes
Finished: Yes
Enclosed: Yes
Contiguous: Yes
Permitted: Yes
Wet space: No
Addition: No
Conversion: No

2 Floor 1 - Bar



Dimensions: 5'1" x 9'10"
Area: 49 sq. ft
Counted as living area: Yes

Heated: Yes
Finished: Yes
Enclosed: Yes
Contiguous: Yes
Permitted: Yes
Wet space: No
Addition: No
Conversion: No

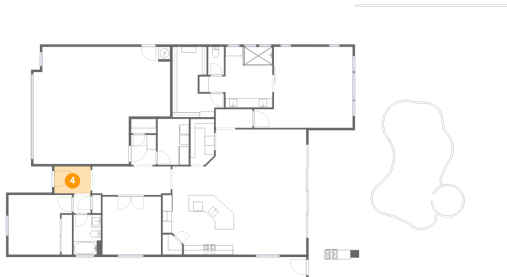
3 Floor 1 - Bath



Dimensions: 15'8" x 13'0"
Area: 150 sq. ft
Counted as living area: Yes

Heated: Yes
Finished: Yes
Enclosed: Yes
Contiguous: Yes
Permitted: Yes
Wet space: Yes
Addition: No
Conversion: No

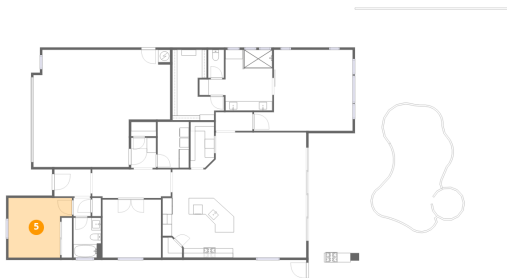
4 Floor 1 - Foyer



Dimensions: 7'9" x 5'9"
Area: 45 sq. ft
Counted as living area: Yes

Heated: Yes
Finished: Yes
Enclosed: Yes
Contiguous: Yes
Permitted: Yes
Wet space: No
Addition: No
Conversion: No

5 Floor 1 - Bedroom



Dimensions: 13'7" x 12'9"
Area: 151 sq. ft
Counted as living area: Yes

Heated: Yes
Finished: Yes
Enclosed: Yes
Contiguous: Yes
Permitted: Yes
Wet space: No
Addition: No
Conversion: No

6 Floor 1 - Garage



Dimensions: 29'3" x 25'1"
Area: 633 sq. ft
Counted as living area: No

Heated: No
Finished: No
Enclosed: Yes
Contiguous: Yes
Permitted: Yes
Wet space: No
Addition: No
Conversion: No

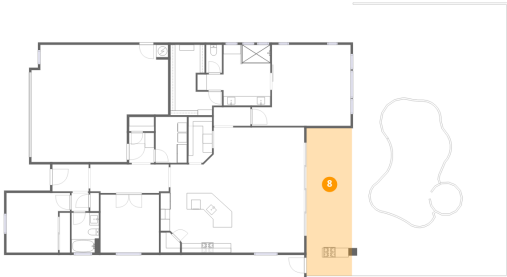
7 Floor 1 - Hall



Dimensions: 7'10" x 4'0"
Area: 31 sq. ft
Counted as living area: Yes

Heated: Yes
Finished: Yes
Enclosed: Yes
Contiguous: Yes
Permitted: Yes
Wet space: No
Addition: No
Conversion: No

8 Floor 1 - Porch



Dimensions: 9'9" x 31'7"
Area: 307 sq. ft
Counted as living area: No

Heated: No
Finished: No
Enclosed: No
Contiguous: Yes
Permitted: Yes
Wet space: No
Addition: No
Conversion: No

9 Floor 1 - Bath



Dimensions: 5'10" x 8'7"
Area: 50 sq. ft
Counted as living area: Yes

Heated: Yes
Finished: Yes
Enclosed: Yes
Contiguous: Yes
Permitted: Yes
Wet space: Yes
Addition: No
Conversion: No

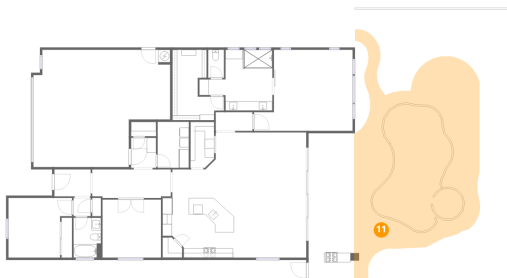
10 Floor 1 - Kitchen



Dimensions: 15'3" x 12'9"
Area: 177 sq. ft
Counted as living area: Yes

Heated: Yes
Finished: Yes
Enclosed: Yes
Contiguous: Yes
Permitted: Yes
Wet space: No
Addition: No
Conversion: No

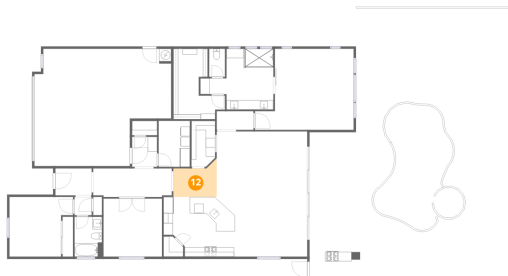
11 Floor 1 - Patio



Dimensions: 27'0" x 53'9"
Area: 995 sq. ft
Counted as living area: No

Heated: No
Finished: No
Enclosed: No
Contiguous: Yes
Permitted: Yes
Wet space: No
Addition: No
Conversion: No

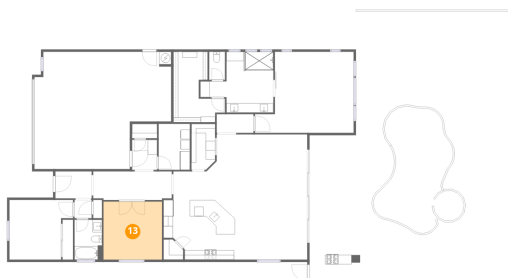
12 Floor 1 - Hall



Dimensions: 9'3" x 6'1"
Area: 59 sq. ft
Counted as living area: Yes

Heated: Yes
Finished: Yes
Enclosed: Yes
Contiguous: Yes
Permitted: Yes
Wet space: No
Addition: No
Conversion: No

13 Floor 1 - Office



Dimensions: 12'6" x 12'5"
Area: 156 sq. ft
Counted as living area: Yes

Heated: Yes
Finished: Yes
Enclosed: Yes
Contiguous: Yes
Permitted: Yes
Wet space: No
Addition: No
Conversion: No

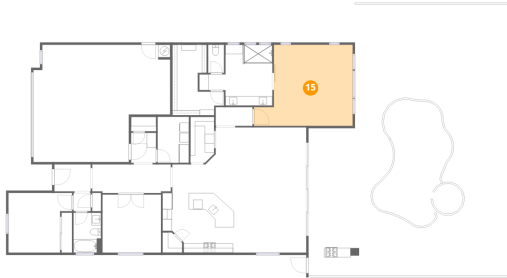
14 Floor 1 - W.I.C.



Dimensions: 11'0" x 15'1"
Area: 117 sq. ft
Counted as living area: Yes

Heated: Yes
Finished: Yes
Enclosed: Yes
Contiguous: Yes
Permitted: Yes
Wet space: No
Addition: No
Conversion: No

15 Floor 1 - Primary Bedroom



Dimensions: 21'1" x 17'4"
Area: 310 sq. ft
Counted as living area: Yes

Heated: Yes
Finished: Yes
Enclosed: Yes
Contiguous: Yes
Permitted: Yes
Wet space: No
Addition: No
Conversion: No

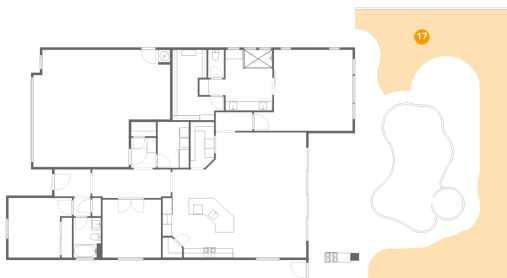
16 Floor 1 - Bath



Dimensions: 3'4" x 6'0"
Area: 20 sq. ft
Counted as living area: Yes

Heated: Yes
Finished: Yes
Enclosed: Yes
Contiguous: Yes
Permitted: Yes
Wet space: Yes
Addition: No
Conversion: No

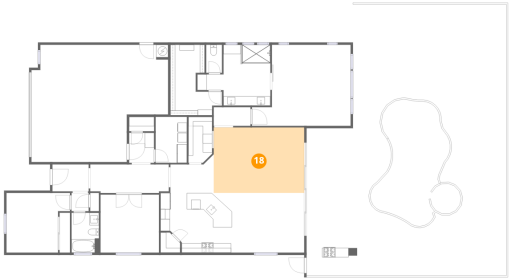
17 Floor 1 - Yard



Dimensions: 32'10" x 58'0"
Area: 871 sq. ft
Counted as living area: No

Heated: No
Finished: No
Enclosed: No
Contiguous: Yes
Permitted: No
Wet space: No
Addition: No
Conversion: No

18 Floor 1 - Living Room



Dimensions: 19'5" x 14'0"
Area: 272 sq. ft
Counted as living area: Yes

Heated: Yes
Finished: Yes
Enclosed: Yes
Contiguous: Yes
Permitted: Yes
Wet space: No
Addition: No
Conversion: No

19 Floor 1 - Laundry



Dimensions: 6'8" x 9'10"
Area: 66 sq. ft
Counted as living area: Yes

Heated: Yes
Finished: Yes
Enclosed: Yes
Contiguous: Yes
Permitted: Yes
Wet space: No
Addition: No
Conversion: No

20 Floor 1 - Hall



Dimensions: 5'4" x 6'5"
Area: 34 sq. ft
Counted as living area: Yes

Heated: Yes
Finished: Yes
Enclosed: Yes
Contiguous: Yes
Permitted: Yes
Wet space: No
Addition: No
Conversion: No

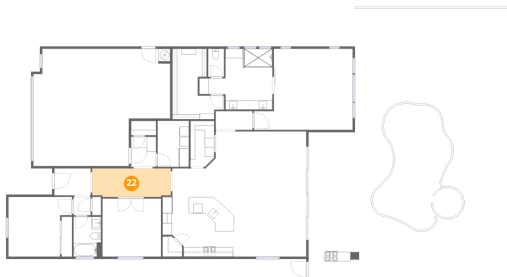
21 Floor 1 - Swimming Pool



Dimensions: 19'4" x 26'7"
Area: 336 sq. ft
Counted as living area: No

Heated: No
Finished: No
Enclosed: No
Contiguous: Yes
Permitted: No
Wet space: No
Addition: No
Conversion: No

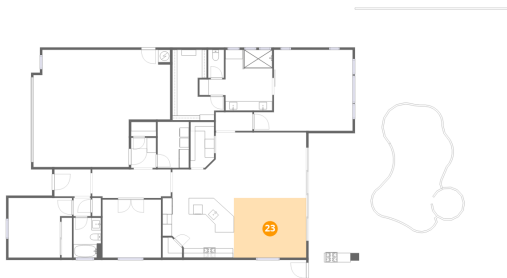
22 Floor 1 - Hall



Dimensions: 16'10" x 6'2"
Area: 102 sq. ft
Counted as living area: Yes

Heated: Yes
Finished: Yes
Enclosed: Yes
Contiguous: Yes
Permitted: Yes
Wet space: No
Addition: No
Conversion: No

23 Floor 1 - Dining Area



Dimensions: 15'6" x 12'9"
Area: 198 sq. ft
Counted as living area: Yes

Heated: Yes
Finished: Yes
Enclosed: Yes
Contiguous: Yes
Permitted: Yes
Wet space: No
Addition: No
Conversion: No

24 Floor 1 - Yard



Dimensions: 3'3" x 19'7"
Area: 48 sq. ft
Counted as living area: No

Heated: No
Finished: No
Enclosed: No
Contiguous: Yes
Permitted: No
Wet space: No
Addition: No
Conversion: No