

Home report

670 Cynthia Street, Pahrump, Nye County, Nevada, United States, 89048



Total Area: 1528 sq. ft

Floor 1: 1528 sq. ft

Excluded: Porch 209 sq. ft, Covered patio 721 sq. ft, Walls: 94 sq. ft

Property summary

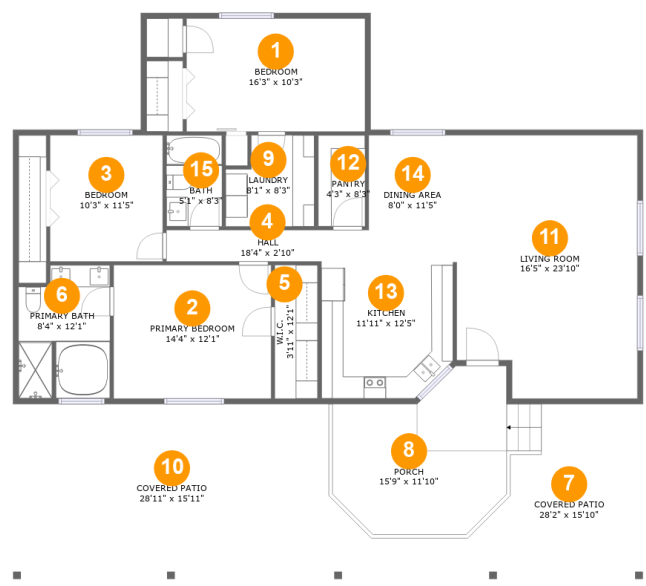
1 Floors

3 Bedrooms

2 Bathrooms

Home report

670 Cynthia Street, Pahrump, Nye County, Nevada, United States, 89048



Room dimensions

Floor 1

Total:1528sqft

Excluded: 930sqft

#		Max Dimensions	sqft	Included
1	Bedroom	16'3" x 10'3"	166 sq. ft	Yes
2	Primary Bedroom	14'4" x 12'1"	173 sq. ft	Yes
3	Bedroom	10'3" x 11'5"	117 sq. ft	Yes
4	Hall	18'4" x 2'10"	52 sq. ft	Yes
5	W.I.C.	3'11" x 12'1"	47 sq. ft	Yes
6	Primary Bath	8'4" x 12'1"	93 sq. ft	Yes
7	Covered Patio	28'2" x 15'10"	260 sq. ft	No
8	Porch	15'9" x 11'10"	209 sq. ft	No
9	Laundry	8'1" x 8'3"	60 sq. ft	Yes
10	Covered Patio	28'11" x 15'11"	461 sq. ft	No
11	Living Room	16'5" x 23'10"	375 sq. ft	Yes

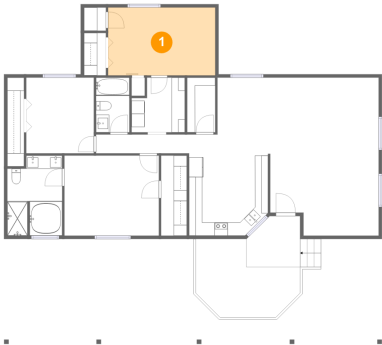
Home report

670 Cynthia Street, Pahrump, Nye County, Nevada, United States, 89048

#		Max Dimensions	sqft	Included
12	Pantry	4'3" x 8'3"	35 sq. ft	Yes
13	Kitchen	11'11" x 12'5"	143 sq. ft	Yes
14	Dining Area	8'0" x 11'5"	92 sq. ft	Yes
15	Bath	5'1" x 8'3"	42 sq. ft	Yes

670 Cynthia Street, Pahrump, Nye County, Nevada, United States, 89048

1 Floor 1 - Bedroom



Max Dimensions: 16'3" x 10'3"
Calculated Area: 166 sq. ft
Included: Yes

Heated: Yes
Finished: Yes
Enclosed: Yes
Contiguous: Yes
Permitted: Yes
Wet space: No
Addition: No
Conversion: No

2 Floor 1 - Primary Bedroom

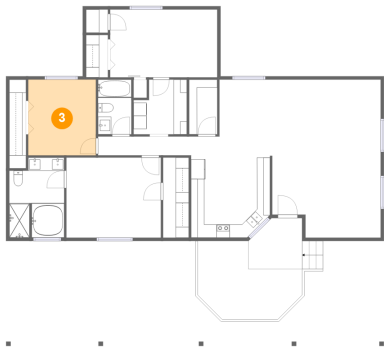


Max Dimensions: 14'4" x 12'1"
Calculated Area: 173 sq. ft
Included: Yes

Heated: Yes
Finished: Yes
Enclosed: Yes
Contiguous: Yes
Permitted: Yes
Wet space: No
Addition: No
Conversion: No

670 Cynthia Street, Pahrump, Nye County, Nevada, United States, 89048

3 Floor 1 - Bedroom



Max Dimensions: 10'3" x 11'5"
Calculated Area: 117 sq. ft
Included: Yes

Heated: Yes
Finished: Yes
Enclosed: Yes
Contiguous: Yes
Permitted: Yes
Wet space: No
Addition: No
Conversion: No

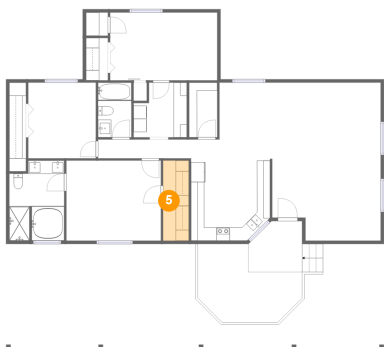
4 Floor 1 - Hall



Max Dimensions: 18'4" x 2'10"
Calculated Area: 52 sq. ft
Included: Yes

Heated: Yes
Finished: Yes
Enclosed: Yes
Contiguous: Yes
Permitted: Yes
Wet space: No
Addition: No
Conversion: No

5 Floor 1 - W.I.C.



Max Dimensions: 3'11" x 12'1"
Calculated Area: 47 sq. ft
Included: Yes

Heated: Yes
Finished: Yes
Enclosed: Yes
Contiguous: Yes
Permitted: Yes
Wet space: No
Addition: No
Conversion: No

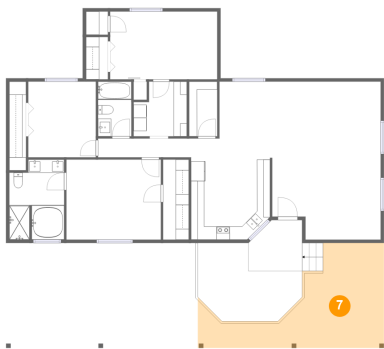
6 Floor 1 - Primary Bath



Max Dimensions: 8'4" x 12'1"
Calculated Area: 93 sq. ft
Included: Yes

Heated: Yes
Finished: Yes
Enclosed: Yes
Contiguous: Yes
Permitted: Yes
Wet space: Yes
Addition: No
Conversion: No

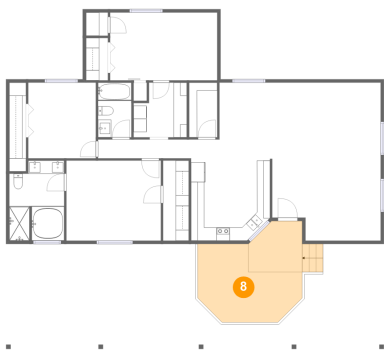
7 Floor 1 - Covered Patio



Max Dimensions: 28'2" x 15'10"
Calculated Area: 260 sq. ft
Included: No

Heated: No
Finished: Yes
Enclosed: No
Contiguous: Yes
Permitted: Yes
Wet space: No
Addition: No
Conversion: No

8 Floor 1 - Porch



Max Dimensions: 15'9" x 11'10"
Calculated Area: 209 sq. ft
Included: No

Heated: No
Finished: Yes
Enclosed: No
Contiguous: Yes
Permitted: Yes
Wet space: No
Addition: No
Conversion: No

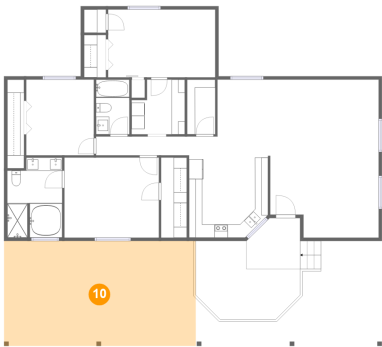
9 Floor 1 - Laundry



Max Dimensions: 8'1" x 8'3"
Calculated Area: 60 sq. ft
Included: Yes

Heated: Yes
Finished: Yes
Enclosed: Yes
Contiguous: Yes
Permitted: Yes
Wet space: No
Addition: No
Conversion: No

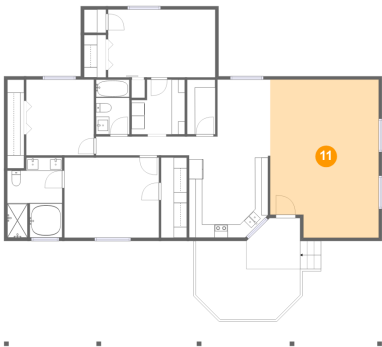
10 Floor 1 - Covered Patio



Max Dimensions: 28'11" x 15'11"
Calculated Area: 461 sq. ft
Included: No

Heated: No
Finished: Yes
Enclosed: No
Contiguous: Yes
Permitted: Yes
Wet space: No
Addition: No
Conversion: No

11 Floor 1 - Living Room



Max Dimensions: 16'5" x 23'10"
Calculated Area: 375 sq. ft
Included: Yes

Heated: Yes
Finished: Yes
Enclosed: Yes
Contiguous: Yes
Permitted: Yes
Wet space: No
Addition: No
Conversion: No

670 Cynthia Street, Pahrump, Nye County, Nevada, United States, 89048

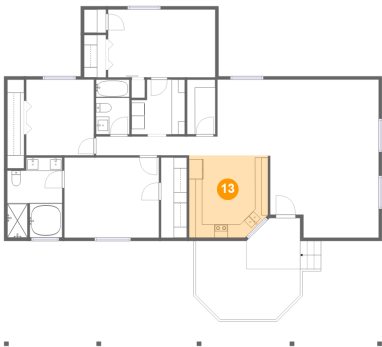
12 Floor 1 - Pantry



Max Dimensions: 4'3" x 8'3"
Calculated Area: 35 sq. ft
Included: Yes

Heated: Yes
Finished: Yes
Enclosed: Yes
Contiguous: Yes
Permitted: Yes
Wet space: No
Addition: No
Conversion: No

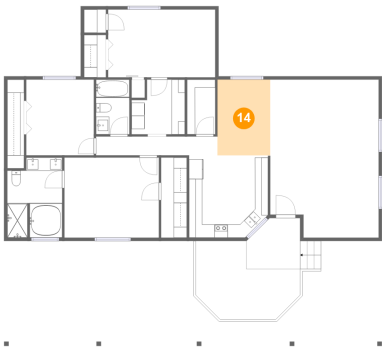
13 Floor 1 - Kitchen



Max Dimensions: 11'11" x 12'5"
Calculated Area: 143 sq. ft
Included: Yes

Heated: Yes
Finished: Yes
Enclosed: Yes
Contiguous: Yes
Permitted: Yes
Wet space: No
Addition: No
Conversion: No

14 Floor 1 - Dining Area



Max Dimensions: 8'0" x 11'5"
Calculated Area: 92 sq. ft
Included: Yes

Heated: Yes
Finished: Yes
Enclosed: Yes
Contiguous: Yes
Permitted: Yes
Wet space: No
Addition: No
Conversion: No

670 Cynthia Street, Pahrump, Nye County, Nevada, United States, 89048

15 Floor 1 - Bath



Max Dimensions: 5'1" x 8'3"
Calculated Area: 42 sq. ft
Included: Yes

Heated: Yes
Finished: Yes
Enclosed: Yes
Contiguous: Yes
Permitted: Yes
Wet space: Yes
Addition: No
Conversion: No